

THE BROMLEY MESSENGER

FEBRUARY 2011

Volume 24 No 11

Report on page 4



Ali Baba and the Faulty Thieves

St George's C of E Primary
School



Photographs courtesy of the School

THE FIRST PAGE

The mantra in our house is that things ain't broke if you can fix it!

Christmas 2010 proved more expensive than we anticipated. The children (all adults) came home at one time or other over the festive period. It is always a delight to see them and the grandchildren; the house becomes noisy and lively - always great fun. However exuberance can sometimes be over abundant. A particularly funny (to son) childhood memory had him re-living the event with the climax of the story a dramatic swish of



the curtains. He swished - so hard they fell down in a heap, rails, runners, everything broken! The look on his face at that point will add a different ending to future re-telling. The

internet came to our rescue and we were able to source spare historic parts with the result the curtains are now back up. The other son rushed to the fridge and with a flourish opened the door - except that it never opened as the handle was by now separate from the fridge in his hand. Tollgate came to our rescue this time and a

new fridge found in the sales. Husband and son did want to just repair the handle but I held fast on this occasion and said I didn't want it mended. The shiny new beast arrived this week and the old fridge departed all under the eagle eye of husband. Some time later we discovered he hadn't removed the packed up contents for last minute transferral from the old fridge which was now in the van somewhere in Essex. A phone call to Currys, who were very nice, and our contents returned some seven hours later with not even a drop of milk spilled and still chilled. Thank you Currys!

The printer needed a new ink cartridge. Husband, this time, went to change it and somehow broke the fitting it slots in to. It is now held - unsatisfactorily - together with tape but it still works so cannot yet be consigned to the scrap mountain of printers in the sky.

One item not broken I surreptitiously and guiltily threw away as, although it stated it was a thermos mug it a) didn't keep anything remotely warm and b) leaked. It leaked once too often. That was it!

Leonie Henderson

MATERIAL for the **MARCH 2011** edition of 'The Bromley Messenger' should reach the Editor, Leonie Henderson, by **14th February, 2010** please.

Contributions from anonymous sources will not be printed. Whilst the editor welcomes contributions, photographs etc this is on the understanding that there is no obligation to publish, that the item may be edited and that there is no breach of copyright. Publication is in good faith and neither the editor nor the publisher accept any liability in respect of the content of any article, photo or advertisement, including any error or omission, responsibility for which remains with the author.

Copy can either be delivered by hand, sent by post or e-mail. (see inside back cover for details) or via the link on the websites www.greatbromley.org.uk or www.littlebromley.org.uk

For details of availability and costs for **ADVERTISING** in the 'The Bromley Messenger' please contact the Treasurer on 01206 251264

Please support the sponsors of our magazine.

RURAL BROADBAND UPDATE

Many thanks to everybody who voted in the BT 'Race to Infinity' competition to bring high speed broadband to Great Bromley. In the end the Ardeleigh exchange got 134 votes out of a possible 1,138 (11.78%) and Great Bentley received 166 votes out of a possible 1,998 (8.31%). Obviously the number of votes cast will not see BT rushing to provide an enhanced service to the village in the near future. However, it is interesting to note that the number of votes cast locally is significantly higher than neighbouring areas in North Essex and South Suffolk.

On a more positive note, the government has announced that the service that would have been provided by the BT Infinity programme is actually likely to be rolled out across the country anyway -

they say before the end of this parliament. This will be funded by money from the TV license fee.

Obviously we would like to see high speed broadband in Great Bromley much sooner so we will continue to encourage other suppliers to the area. The challenge will be to persuade them that there is sufficient interest based on the numbers who voted in the BT Infinity campaign.

Neil Skinner



LETTERS

Dear Leonie,

First up, at the risk of embarrassing you, I wish to publicly appreciate your sterling work on the Bromley Messenger, making it into such an attractive offering and interesting read and the envy of most such communities, I'm sure.

Now just a quick update on the War Memorial – again the web has worked its wonder, bringing to me the interesting background of Henry (Harry) Polson/ Poulson from his grandson, Paul Manning of Stones Green. He directed me to a webpage about Harry pertaining to a book which commemorates one of his war actions: <http://www.thegreatershareofhonour.com/>

harry-polson-essex-regiment.html

Finally, in building the War Memorial web pages I have decided it is time to freshen up the village websites, so I will be doing a new design in the coming weeks. I just thought it would be a good idea first to get any feedback about the current sites – what people like, what they don't, and any information or features they would like added. Any feedback can be sent to web@greatbromley.org.uk.

Regards from the warm, sunny days of the Hutt Valley, NZ!

Hugh Frostick



PLEASE SUPPORT OUR SPONSORS & ADVERTISERS



ST. GEORGE'S (C OF E) SCHOOL, GT. BROMLEY

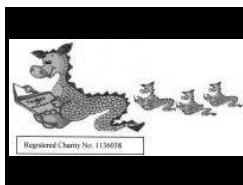
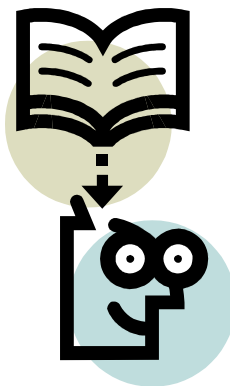
Head teacher: Pat Fitzgerald
Telephone: 01206 230305

As usual the Christmas play, 'Ali Baba and the Faulty Thieves', was a great success and many parents and grandparents thoroughly enjoyed watching their children perform so magnificently. Once again huge thanks are due to Amanda Rowe for writing the play and Melanie Bridle for composing the music.

This was a very poignant moment since it was the last play that Mrs Fitzgerald will organise as, very sadly, she is going to retire at the end of the summer term. She has had an incredible 24 years at the helm of St George's School and will leave a very big hole to fill. Further details of her farewell will follow later in the year.

The PTA will be holding an adult quiz night in February at the school (date not yet finalised). If you would like to bring a team, please contact the school office - 230305. On 4th February the whole

school will be supporting the work of UNICEF by participating in their national non-uniform day. Pupils will come to school wearing 'muft' clothes and pay a fine for the pleasure! Day for Change will raise money to help communities in Guyana adapt to these changes, and help ensure that children are able to realise their rights. UNICEF is already helping children and communities deal with the effects of climate change but needs help to do more.



Baby Dragons Parent and Child Group

Come and have fun with your child at Baby Dragons every Friday Morning between 9.30-11.30am
Fun and exciting activities for children aged from 0-5 years.

at Great Bromley Village Hall
Parsons Hill, Great Bromley, Essex CO7 7JA
07857 503103



Little Dragons Pre-School

Great Bromley & Frating
Ofsted Inspected

Website: www.littledragonspreschool.org

Email: littledragonspreschool@gmail.com

Great Bromley Village Hall

Monday & Wednesday 9.15-11.45am & 12.15-2.45pm Tuesday & Thursday 9.15-11.45am
Children 2-5 years

Lunch time session available Mondays & Wednesdays
For more details/ visits please contact us on 0785 7503103

CRAFTING IN THE VILLAGE

Quiltmaking

I have been playing with fabrics for many years, I find it very relaxing and therapeutic though some folk would question that, with my unusual colour mixing.

I have managed to make one quilt, for my sister-in-law, in delicate whites, pinks and greys but found that I had to revert to my yellows and reds of another quilt to stimulate my imagination.

I generally piece my quilt tops by machine though I do enjoy hand stitching. The machine stitching allows for a greater amount of laundry in the quilt's life, and above all, I do like them to be used, but my quilting of the nearly-completed article is always by machine. I really enjoy this stage and often overlay the top with a completely different complementary design. After this, if I think it can take it, I add more decorations.

For me, quilt making is anything but repetitive. My latest quilt under the needle I call 'Scottish Dance', all pointy toes and swirling plaids in a big candlelit castle, but



no female dancers, no white. Some could call it gloomy, but to show that I can do 'light', the photograph is of 'The Farm', a quilt I made for a grandson.

Jacquie Terry

KITCHEN CORNER

A recipe from Portugal:

Coconut Cake

3 eggs
5oz flour
4 oz butter
2½ oz coconut
5 oz sugar
1teaspoon baking powder

Cream butter and sugar, beat in the eggs, mix in dry ingredients.

Bake in a greased and floured tin for 45 minutes in a moderate oven, about 180°C
Test with a skewer which should come out clean.



Jill Frostick

CARPET BOWLS




Latest league match results are, Lt Clacton at home a win 5-3, Walton away we lost 8-0.

On the last club evening before Christmas, Andrew arranged a Target Bowls competition. No jack to aim at but a 'Bull's Eye' with numbered circles. It turned out to be harder to push an opponent's wood from the highest scoring circle than making a draw. However, it was a fun evening and the four teams enjoyed the challenge. The winning team of Sandra, Ron Field and


Tom Bates managed 361 points narrowly beating the runners up with 359, 3rd team 306 and 4th team 284. All games over 7 ends. By this time everyone had worked up an appetite for the tasty spread supplied by the lady members of the club. After exchanging cards and good wishes we all went home looking forward to meeting up again in the New Year.

Nancy Kempster

Have you made your choice?



Your Emergency Care Summary



The NHS in England is introducing the Summary Care Record (SCR), which will be used by NHS healthcare staff caring for you in an emergency or when your GP practice is closed.

What is a SCR?

An electronic record containing information about:

1. Any medicines you are taking;
2. Any allergies you suffer from;
3. Any bad reactions to medicines you have had.

Do I want a SCR?

- YES - You do not need to do anything. When your GP practice is ready to create SCR's for their patients you will have one.
- NO - Complete an opt out form (see further information below) and return to your GP practice. **YOU CAN CHANGE YOUR MIND AT ANY TIME!**

Do I have a SCR?

- YES - If you are a patient at one of the GP practices listed to the right and haven't requested to opt out.
- NO - If you have informed your GP practice that you do not want one. **YOU CAN CHANGE YOUR MIND AT ANY TIME!**

Who is creating SCR?

- **LOCALLY (Dec 10):**
 1. Ambrose Avenue Surgery
 2. Castle Gardens Medical Centre
 3. Hawthorn Surgery
 4. Lawford Surgery
 5. Tiptree Health Centre
 6. North Colchester Medical Centre
- **NATIONALLY (Dec 10):** 624 GP practices live with 3.9 million records created.

Who is looking at SCR?

(With your permission to view)

- **LOCALLY** - Harmoni Out of Hours services in Clacton, Harwich & Colchester.
- **NATIONALLY** - 54 sites including Bournemouth, Poole, Dorset, Somerset, Stoke, Bolton, Bury, Rochdale, Pennine, Lambeth, Southwark, Lewisham, Bexley, North East Essex, Thurrock; Kent.

Further Information:

- Summary Care Record Information Line: 0300 123 3020 (charged at local rate)
- Patient Advice & Liaison Services (PALS): 0800 328 5620
- www.nhscarerecords.nhs.uk
- Opt Out Form available from: www.nhscarerecords.nhs.uk/options

We are back after the Christmas break, and what a start to the New Year. Angela Dennis came to entertain us with great aplomb with her chosen folk music; what a start to the dark and damp days of January.

Angela called it "Sing From the Heart". This was very true. Angela was really a local girl born in Dovercourt, whose career, as she preferred it to be, was NOT music teacher but musical facilitator. She told us how she had grown up in a family that was surrounded by music before introducing us to *The Mountains of Morn*, accompanying



herself on the guitar. This reminded her of childhood, then on to school and the 50s with *Save the last Dance for me* and *Those were the Days!*

Angela had worked as a carer in her earlier life with 'The Mentally Handicapped', now known as Special Needs, where she introduced music as part of the treatment; at this time she had no qualifications in music. She says she was a late developer and began learning the piano at the grand age of 40!! She enrolled on a Foundation Course as a mature student at Colchester Institute continuing working at the same time. During her course she volunteered to go to the old St. Mary's Hospital to entertain at the Day Centre. This she did and during the course of the day she sang *Drink to me only*, which had the effect on one patient who had suffered a stroke to being reduced to tears, Angela was upset by this but the staff were very pleased as this was the first emotion this lady had shown since her stroke. It demonstrates just how powerful music therapy can be.

Angela graduated and then worked at Greyfriars with music, still continuing her job at Turner Village. However, the

residents were then re-located to the community so Angela ran courses fulltime. The funding for this was subsequently cut and she now runs her own courses. Angela then finished with *Fields of Gold* by Eva Cassidy. What a very enjoyable evening.

After refreshments we concluded with the business for the evening, including voting for the proposed resolutions, done independently with our own voting slips, which would be correlated and the results sent to County. *Joy Rolfe*

FRIENDSHIP CLUB

February already! Christmas seems a long way away but our party was enjoyed by all - we had lots of goodies to eat donated by the members and the entertainer kept us in a happy mood.

It was thought we would have to cancel the January meeting in view of the electricity being turned off but Brenda and Richard came to our aid by offering for us to have the meeting at the Cross Inn. The subscriptions will be the same as last year.

The competition for February is 'something to do with the sea'.

Now, with great sadness, I must tell you of the sudden death of Hazel (Aldsworth), daughter of Doris (Anns). She joined us in 2009 so had not been a member for very long but in that short period had become a most willing helper in all our activities and especially serving the teas at our meetings. After her first visit to us she told her Mum she couldn't wait for the next meeting as she had so enjoyed seeing the people at the Club who had made her so welcome. Rest in peace dear Hazel, we will miss you. A minute's silence in her memory will be held at the February meeting.

Vicky Griffiths

20,000 MILES AROUND GT BROMLEY

I think I am probably a familiar sight to many people in our corner of Essex. I'm the lady on the strange lying-down bike (recumbent tricycle) with various flags helping to make me visible. I have cycled 20,000 miles in the last two years, most of which was on our local roads. This summer the new addition to our family, Poppy the Cockapoo puppy, also started coming out cycling with me in a basket on the back.

So why all the cycling? After we moved from Kent to Great Bromley in April 2008 I realised I'd have to use the car rather more than I wanted as we were no longer in walking distance from a supermarket. It seemed a good time to get a bicycle but due to a disability with my left arm I can't



cycle more than a couple of miles on an upright bicycle. Fortunately I stumbled across recumbent bikes where there is no weight on your arms/hands/

wrists (and of course that big wide seat means no saddle-sores as well!) and so tried a few out and ordered a Trice Q (manufactured by Inspired Cycle Engineering in Cornwall) straight away.

The trike arrived in May 2008 and I slowly got used to cycling again and the different muscles used with recumbents. I only did a couple of thousand miles that year as I was getting used to it but it's such great fun cycling a recumbent, and so safe as well, that by 2009 I was regularly cycling 1000 miles in a month. In fact I cycled 12,000 miles overall in 2009, which became expensive in tyres and chains but was undoubtedly cheaper than travelling everywhere by car - as well as more healthy and fun. It's surprising what wildlife you notice when you're trundling along on a

deckchair.

2010 had much worse weather than 2009 so I only managed 8,000 miles. At the end of 2010 my trike was feeling a

bit worn; the company that make it say that I am their longest distance tester and are very good at sending me spare parts for no charge, often so they can have the old part back to see how it performed. I shall be treating myself to a new trike this summer.

We are lucky to live somewhere with quiet roads and friendly motorists; I regularly invite London friends to cycle with me and they love the courtesy of the motorists and the fact that the air is clear and there is so much wildlife and landscape to see. I know that horses don't tend to like my trike so I am careful around them but it's wonderful to see the bemused expressions on dogs' faces as I glide past at nose level. I'm by no means a fast cyclist but I do my best to try not to hold other road users up too much.

I can heartily recommend cycling - and recumbent bicycling or tricycling in particular - to those who want to get fit and enjoy the beautiful countryside in which we live. And another benefit - according to my bike satnav I burnt 401,761 calories through cycling in 2010 - which is an awful lot of extra cake I can eat!

Helen Hancox



LITTLE BROMLEY PARISH COUNCIL

The following matters were discussed at a meeting of the Parish Council held on Thursday, 16th December, 2010.

There were six members of the public present and the consensus of the public was that the 'Firework Nite' was an excellent entertainment and that the organisers all worked extremely hard to make it the success that it was.

With regard to the Speedwatch, Steve Wilcox gave an excellent report of the various activities and also the changes that are about to happen in the county. The introduction of a £200 levy to maintain equipment was raised and how to raise this will be discussed at the first meeting in the New Year; also Highways Department will review the speed limit from the Old School House to Paynes Lane early in 2011.

Mark Ashmore gave details of the various costs for refurbishment for the war memorial:

- i) £340
- ii) £575
- iii) £7,000.

Enquiries continue to be made as to what grants are available.



The following matters were placed before the committee to be discussed/perused at the first meeting in 2011.

Possible function/party to be held in conjunction with the 'Haywain' to celebrate the Royal Wedding or later in the year a Summer Fete/combined Car Boot Sale could take place in July 2011.

The firework night turned out to be an amazing success in spite of the weather. £1000 of fireworks was expended but at least one third of this total was funded by local businesses either by donations or by fireworks supplied. We actually received

more money from donations than previously earned from car park fees. We wish to thank everyone for their fantastic support.

On a different note the Clerk will be investigating Council insurance policies for a possible better deal.

The Chairman wished everyone present the Seasons' best wishes and thanked everyone for their support in the past year.

The next meeting of Lt Bromley Parish Council will be held on 10th February at 7.30pm at The Haywain.

Maj. A Downes, Clerk

BRIGHTLINGSEA & DISTRICT ROTARY CLUB

Brightlingsea and District Rotary Club collected just under £2000 for Rotary Charities from its Santa Sleigh visits to Brightlingsea, Wivenhoe and Colchester.

The collection was curtailed due to the snow by nearly a third. The two main recipients will be Leonard Cheshire Disability at Great Bromley and Multiple Sclerosis with the rest going to local organisations who helped with the collections.

Santa also paid a visit to the Cheshire Home to give presents to the residents which we have been doing for 12 years now.

If you are interested in Rotary please contact me any time.

Len Christodoulides
Secretary
01206 251264



GREAT BROMLEY PARISH COUNCIL

Great Bromley Parish Council
www.essexinfo.net/gbpc

Report of a parish council meeting held on 13th January 2011

Affordable housing

In co-operation with the district council and the English Rural Housing Association the parish council continues its progress with securing a second scheme of affordable housing for the village. The next step is to identify what need there is for housing in



Great Bromley and how this might be best met. We hope that a survey of residents' views will provide some answers. Therefore, accompanying this magazine

there is a survey form together with an explanatory letter to you from the Parish Council's chairman plus a pre-paid return envelope. If we are to have any chance of getting affordable houses built in the village it is important that as many people as possible complete and return the survey form. It will not take long and there is no postage to pay, so please do it today!

The deadline for the return of the survey form is 10 March 2011. Further forms are available from Ken Bromfield on 01206 230089. A report of the survey will be published later in the year.

Recycling

Please remember to take your used bottles, jars and paper to the recycling facility at Church Meadow. This provides a useful income for village projects which amounted to £584 last year.

Poorlands Charity

The trustees of Great Bromley's Poorlands Charity met in December and agreed to distribute grants of £60 each to four residents. The Trust's income in 2010 was £233 and its investments are presently

worth about £4900.

Hare Green Playground

The parish council has been awarded a grant of £5000 by the East Essex Area Forum Community Initiatives Fund as a contribution towards the cost of installing swings for under-5s at the Hare Green recreation ground.

Village tree planting programme

The council has purchased 10 oak and 30 hawthorn trees for planting during 2010/11 with half the cost being met from a Tendring District Council grant.

Community grants

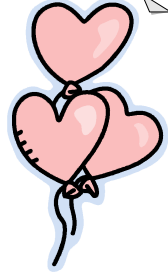
A reminder that, at its February meeting, the parish council will be awarding grants to village organisations or voluntary groups whose activities benefit the community. If you have a project which requires financial assistance then please submit an application in writing by **7th February 2011** to the Clerk, Ken Bromfield, 4 St George's Close, Great Bromley, Colchester CO7 7HZ, who can provide further information (01206 230089).

The next meeting of the Council will be at 7.30 pm on Thursday 10th February 2011 at Great Bromley Village Hall. All residents are welcome to attend.

ALAN SIEVEWRIGHT

It is with sadness that we inform you that Alan Sievewright died suddenly over the Christmas period while on holiday in Malta. Alan lived in Badley Hall Road for many years, until he moved to Colchester. While living in Great Bromley Alan was the footpath warden, the duties of which he addressed with great enthusiasm and dedication.

EVENTS IN 2011



FEBRUARY

- 2 WI meeting, Guide Dogs for the Blind, Village Hall, 7.30pm
- 9 Ardleigh Horticultural meeting, Tiptree, Ardleigh village hall, 7.45pm
- 10 Lt Bromley Parish Council meeting, The Haywain, 7.30pm
Gt Bromley Parish Council meeting, Village Hall, 7.30pm
- 12 Valentine Dinner Dance, Venture Centre 2000 Hall, Lawford, 7.00pm
- 17 Friendship Club meeting, Village Hall, 2.00pm
Essex Handicrafts meeting, Beadwork, United Church Hall, B'sea, 7.30pm
- 19 Alternative Quiz Night, Village Hall, 7.00pm
- 27 A.P.C.M., St George's church, 11.45am

MARCH

- 1 Village Hall Charity Trustees meeting, Village Hall, 7.30pm
- 2 WI meeting, Barn Owl Conservation, Village Hall, 7.30pm
- 9 Flower Festival meeting, St George's church, 10.30am
Ardleigh Horticultural meeting, Japanese Gardens, Ardleigh village hall, 7.45pm
- 10 Gt Bromley Parish Council meeting, Village Hall, 7.30pm
- 17 Friendship Club meeting, Village Hall, 2.00pm
Essex Handicrafts meeting, Corsage, United Church Hall, B'sea, 7.30pm
- 19 Colchester Institute Chamber choir, St George's Church, 7.30pm
Spring Crafts & Gifts Fair, Venture Centre 2000, 10.00am

APRIL

- 2 Race Night, Village Hall
- 3 WI meeting, Ceramics, Village Hall, 7.30pm
- 13 Ardleigh Horticultural meeting, Wonderful Gardens, Ardleigh village hall, 7.45pm
- 14 Gt Bromley Parish Council meeting, Village Hall, 7.30pm
Essex Handicrafts meeting, Costumes, United Church Hall, B'sea, 7.30pm
- 17 Friendship Club meeting, Village Hall, 2.00pm
Lt Bromley Parish Council Public Assembly meeting
- 23 Farmers Market, Village Hall (Provisional) 10.00am-2.00pm
- 29 Apr-2 May Flower Festival POSTPONED

MAY

- 3 Village Hall Charity Trustees meeting, Village Hall, 7.30pm
- 4 WI meeting, Toymaking, Village Hall, 7.30pm
- 11 Ardleigh Horticultural meeting, Colchester Parks, Ardleigh village hall, 7.45pm
- 12 Gt Bromley Parish Council meeting, Village Hall, 7.30pm
- 17 Friendship Club meeting, Village Hall, 2.00pm
Essex Handicrafts meeting, Textile Artist, United Church Hall, B'sea, 7.30pm
- 27 Night on Broadway with Drop Dead Divas, Village Hall, 7.30pm

JUNE

- 1 WI meeting, Members' Meeting, Village Hall, 7.30pm
- 11 Family Hog Roast & Disco, Village Hall, Further details to follow
- 16 Friendship Club meeting, Village Hall, 2.00pm
Essex Handicrafts meeting, Dots Dolls, United Church Hall, B'sea, 7.30pm
- 18 Strawberry Tea, Fryerning, Gt Bromley. More details to follow

VALENTINE DINNER DANCE

Saturday 12th February

7.00pm - 12 midnight

Venture Centre 2000 Hall, Lawford

Dancing to " **Untouchables**"

3 Course Dinner
£30.00 per head

Bar

Raffle in aid of
Motor Neurone
Disease

Call Linda Pinhey on
Tel: 01206 230126



Alternative Quiz

Saturday 19th February
NOTE CHANGE OF DATE

Great Bromley Village Hall

Teams of 8 only
7.00pm for 7.30pm start



Tickets - £5 each
obtainable from Dinah on
01206 231059

Bring your own drink and
nibbles.

Race Night

2nd April

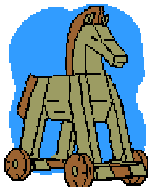
Great Bromley Village Hall

Sponsorship for a race £25.

Horses £5

Race card £1 includes
admission

Bring your own drinks and picnic.



Craft Fayre

Saturday 19th March
Venture Centre 2000, Lawford

Jess and Idoia would like to welcome you back
for their spring crafts and gifts fair Doors open
from 10 till 4

Free entrance and parking

Many stalls to see, including handmade cottage
crafts, new gift items and of course the kitchen
will be open for hot and cold refreshments

Would love to hear from anyone that may be
interested in having a stall, please call Jess on
07966171056.

Saturday, 19th March
at 7.30pm
in St George's Church

Ian Ray

with the

Colchester Institute
Chamber Choir

followed by
Wine and Refreshments

More details to follow

CRICKET CLUB



100 Club Winners

December 2010

1st. Mr. D. Lording
2nd. Charlie Allam
3rd. Mr. Louis Perrin

THE TOILET AT THE CHURCH

Report of Parish Council Meeting 13th January 2011

Jenny Nicholls and Steven Walker attended the above meeting to answer some of the questions raised at the previous Parish Council Meeting in December.

Jenny represented the church and Steven in his capacity as Project Manager for the Toilet Project to address technical questions and information.. Steven replied verbally to concerns raised in the letter.

1) Types of disposal briefly described.

- a) Rectory sewer – drain too low
- b) Septic Tank – levels not good
- c) Mains drainage – too expensive
- d) Cesspit – best option on Parish Council land. Site described – secure cast iron cover with vent situated in hedge.

2) Smell/odour

Questions raised centred mainly around

- a) smell/odour
- b) Health & Safety – Children playing

- c) in that area.
Long term maintenance of cesspit – are funds available in the future to enable emptying and maintenance?
- d) Possibility of a contract – legal document to ensure future maintenance etc.

On the whole the council were most supportive and agreed in principle. Steven and I assured the council that we would keep them informed of progress and developments.

Way forward

I think we must applaud Steven for all his hard work. The P.C.C. now need to decide how to proceed forward with this project.

Steven suggests –

- 1) P.C.C. to approve that the project is progressing in the preferred direction
- 2) A meeting is arranged with Gregory, Marion, Jenny and Steven to plan next step. Possibly meeting with Simon Marks.

Jenny Nicholls



Mobile Library

(January – June 2011)

The county's mobile library will continue to call at the following Great Bromley locations on **alternate Wednesdays** at the same times as before – as noted below:

11.15 – 11.30 am

11.40 – 11.55 am

12.00 – 12.15 pm

1.20 – 1.35 pm

1.40 – 1.55 pm

Cross Inn, Burnt Heath

Hamilton Lodge

Church Meadow

Great Bromley Village Hall

Chase Road West, Hare Green

The visit dates for the first six months of 2011 are:

12 and 26 January

6 and 20 April

6 and 20 April

9 and 23 February

4 and 18 May

4 and 18 May

9 and 23 March

1, 15, 29 June

1, 15, 29 June

THE DOCTORS' SURGERY NEWS



Gt Bentley Surgery

Perhaps not surprisingly, the last few weeks have been very busy with all the winter ailments suddenly catching up with people. We have been working flat out since before Christmas and if you have had difficulties getting an appointment, please accept our apologies. It's just one of those spells I'm afraid.

To help us cope at times like this, please remember that we can do absolutely nothing to cure colds or flu. If you are unlucky enough to succumb to either, please don't come to the surgery. You will just spread your germs around (probably to us) and might well catch something here from someone else while your defences are weakened.

The standard advice is to stay at home if you can, drink plenty of fluids and dose yourself up with over-the-counter remedies from your pharmacy to ease the symptoms. (Don't forget to read the instructions.) If you need advice about self-medication, a call to the pharmacy on 01206 250120 should do the trick. For general advice, NHS Direct on 0845 4647 are very helpful. If you feel that you really are more ill than you should be with a cold or flu, please ring the surgery and ask to talk to a doctor. He or she can then assess your condition and either arrange appropriate medication for you or simply put your mind at rest.

With all the media hype about flu deaths (which at this moment are certainly no higher than in other years), requests for flu jabs have increased dramatically since the New Year. We are obtaining what stocks we can, but supply is limited, so only people who are in the accepted "at risk" groups are being jabbed. We are not writing any private prescriptions for people who are more and more being termed "the worried well", as this reduces the number of jabs available for people who really need them.

The current situation has highlighted the importance of people who are in an "at risk"

group getting their flu jabs as early as possible in the season.

We now have a waiting list of patients who could have been jabbed three or four months ago and for whom we now can't at present get enough stock. Next year, if you are due a jab, please contact us from around mid-September onwards to book one. It might save you a nasty illness or an anxious wait.

On a more cheerful note, we've recently taken on a new secretary, and I think she ought to be our featured employee this month. Her name is Nina Marshall and she came to us from St Helena Hospice where she had been doing a similar job for the last couple of years. Prior to the Hospice, she worked at the Clacton Minor Injuries Unit, so she shouldn't have too much of a problem picking up medical terminology and all the jargon that we are guilty of slipping into occasionally.

It is still unclear how the coming changes to the NHS are going to affect us. However you can rest assured that we are working hard towards them. Dr Hunt and I "volunteered" to be the leads for the practice as we head into a period of shadowing the budgets that we will have to adhere to for real in a couple of years' time. I suspect that we'll be losing sleep over the whole business before long.

As part of our preparation, over the next few months, we might well be asking some of you for help or information about what has happened when you have visited hospitals or other healthcare providers. If we do, please bear with us, even if the questions seem pretty basic or stupid, as we are on a steep learning curve. Anything that we ask or do will be with the intention of improving your access to, and experience of, NHS care. That sounds a lofty ambition, I know, but like they say in the advert, "You're worth it."

Hugh Cronin, Practice Manager

Alan and Ruth Marshall have moved w.e.f. 7.2.11 from Old Shields Farm to Little Shields, King Street, Bradfield CO11 2RD

Tel: 01255 870826

They would be very pleased to see any friends from the village at any time.

FROM THE PAST

A Husbandman

Great Bromley in days gone by was a hive of agricultural activity. Many of the men folk are listed as husbandmen - skilled workers.

Roger Heckford was a husbandman and lived with his wife, Agnes, in the village. He made his will in 1582 leaving Agnes his house and land called Fenne House for life. On Agnes' death all went to his son, John, and if John should die all went to his three daughters, Charity, Anne and Emme. Also Agnes was left land and a wood called Montes and Celesters Grove which also went to the family on



her death. There was also a land called Preestes which would eventually go to the daughters. On Agnes' death, John had to pay the girls £30.

Bromley's poor were left 2 bushels of rye from the harvest after Roger's death. All to be supervised by David Heckford, his brother.

The houses and lands were surrendered to the Manor via Roger Parson and John Cebboud, (Cobbold), tenants of the Manor and Mr Wentworth as the bailiff was not able to be present. David Heckford wrote the Will which was proved 14th June, 1582.

John Appleby

VILLAGE HALL TRUSTEES

Another year starts with me looking back at the projects and events achieved over the last year.

The outside of the Hall has been painted, the guttering has been finished, the kitchen has been totally replaced including a new floor, a new cooker, a new fridge, new water heater and a new hot plate. New storage cupboards have been built so that the playgroup now has its own lockable room. A PA system has been installed with new wall speakers. The whole aspect of the hall looks less cluttered, more open and appears much bigger than before. Not bad, not bad at all. We have run open days, quiz nights, dance night, cabaret nights as well as providing a great resource for the Playgroup, Bowls Club, Badminton Club, the WI, the Friendship Club, the Men's Club and many other village groups.

New projects this year. Insulating the roof of the whole Hall (there is no insulation in the roof at the moment) and insulating the water pipes. The insulation for the ceiling has been bought and is ready to install. A new heating program system is due to be installed over half term which together with the roof insulation should save money on heating costs.

The first event of the year is the Alternative Quiz Night which was totally packed last year. I wouldn't like anyone to miss out so if anyone would like a table for our quiz please let Dinah or Jane know by email or on 231059. Its teams of 8 no more ,7 for 7.30 start, £5 a ticket, bring your own drink and nibbles

FUTURE GREAT EVENTS

Alternative Quiz on 19th February
Race Night on 2nd April, Sponsorship for a race £25. Horses £5 Race card £1 includes admission. Bring your own drinks and picnic.
Farmers Market on 23rd April

(Provisional) 10am to 2pm

A Night on Broadway on 27th May
Family Hog Roast & Disco on 11th June Further details to follow.

Farmers Market on 23rd July (Provisional)
10am to 2pm

Cabaret Night Olly Day on 8th October

Farmers Market on 22nd October
(Provisional) 10am to 2pm

Christmas Fayre on 3rd December

Farmers Market on 21st December
(Provisional) 6pm to 9pm

New Years Eve Dance on 31st December

That's all for now, as always thank you for your support and please put the forthcoming event dates in your diary. Let's all make the most of our Village Hall in 2011.

Next Committee meeting Tuesday March 1st at 7:30pm. As always all welcome.

David Beech

Great Bromley Parish Council CONTRACTS FOR GRASS AND HEDGE CUTTING

In March the council will be awarding the contracts for the maintenance of its land during the period 1st April 2011 to 31st March 2012. There will be three separate contracts with a total value of about £4000 and covering the following work: (a) general hedge cutting; (b) general grass cutting; (c) other miscellaneous grass and hedge cutting work.

Organisations or individuals interested in tendering for any or all of these contracts should contact the Clerk, Ken Bromfield (01206 230089 or gbparishcouncil@btinternet.com), for further information and details of the specifications.

The closing date for the receipt of tenders will be Monday 7th March 2011.

CAROLS BY CANDLELIGHT



Thursday 23 December 2010

Most of the snow having gone, we hoped for a reasonable attendance. Henry Fairley and his 'wonder' machine warmed the church in time for the first arrivals, all of whom commented upon the favourable temperature. The candles were lit, the church filled up, the punch was put to warm, the cakes ready to serve, the bells rang and the organ's notes announced that the service was about to commence. Fr. Robert and Gregory Frostick welcomed everyone who then proceeded to sing 'O Little Town of Bethlehem'.....

It was a lovely evening - the male voice choir was splendid. Children participated as well as the adults in various ways: thank you to you all. The congregation of

over 100 came from far and wide, including Europe: the reputation regarding our refreshments must be spreading!

Donations of £200 were given, which were divided between the Churches Conservation Trust, The Brooke Sanctuary and EACH.

The Committee of the Friends would like to thank you all for your continued support during 2010. We will be meeting soon and making plans for 2011's activities, and look forward to seeing you at one or another of those. Meanwhile, our good wishes to you all for 2011. (Don't forget, the church is open every Saturday and Sunday).

Susan Scott

ESSEX POLICE



Happy new year to you.

There are no incidents to report in Great Bromley for the month of December.

*Les Barnes PCSO 71909
Thorpe Le Soken NPT Eastern
Mobile 07967466876
Tel 03003334444 Ext 487603
Email : leslie.barnes@essex.pnn.police
website : www.essex.police.uk*

HEATING OIL TANK OWNERS

This is the time of year where, if you own an oil tank and use it for your heating, you may be receiving a top up delivery. Thieves know this and will be on the look out: they drill holes in your tank and siphon off the contents.

If you see anyone acting suspiciously do not hesitate to call the police. Also, stop and think. Is there any way you can make your oil tank more secure.

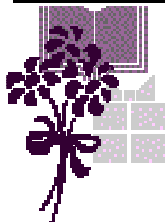
Wishing all residents a happy new year.

*Police Constable 2176 Dan HEARD
Neighbourhood Constable*

VEHICLE THEFTS

Thefts from motor vehicles, caravans and motorhomes are rapidly increasing in the Tendring area - "could all vehicle owners make sure valuables (including SatNav units) are not left on view". Vehicles should be locked even when in driveways. In addition to vehicle crime, metal thefts, mainly of copper and lead are taking place with increased frequency - Sgt. Russ Cole can be contacted via Clacton Police Station for information on measures that can be taken to protect properties from this type of theft.

CHURCH NEWS



Flower Festival St. George's 2011

Unfortunately the extent and disruption to our church life in 2011 because of impending restoration work seems to be more

extensive than we first anticipated.

It is with more than a little regret and disappointment that the P.C.C. has therefore decided to postpone the Flower Festival until the weekend of 1st / 2nd October, 2011.

I do apologise if we have caused inconvenience to those who were already planning their arrangements etc., but I know 1st and 2nd October will be a very, very exciting weekend.

The flowers and foliage are vibrant during the autumn season and will be in abundance in our gardens. Our theme will continue to be one of Thanksgiving / Celebrations – very apt for that time of year, when we in our village have so much to be thankful for.

If you would like to be involved or help in **any way**, (there is always so much to do) i.e. flower arranging, sponsorship, raffle, stewarding, cake making, please, please phone me on 01206 230688 for more

information.

There will be a preliminary planning meeting on Wednesday 9th March at 10.30am in the church. Please join us for coffee, all are welcome.

Thank you.
Jenny

The **Annual Meeting**

(A.P.C.M.) of St. George's Church, Great Bromley is to be held at 11.45am on February 27th.

Elections for Church Wardens and the Parochial Church Council, (P.C.C.) will take place on this day. Reports will be given regarding life at St. George's.

Rev Robert Farrell and Church Wardens are looking for members of the community to become involved in the running and managing of church affairs. We are particularly looking for a New Secretary in 2011. Why not come along and see what we have to offer? Come and join us, make St. George's the centre of our village community.

2011 is going to be an exciting year. For more information please phone any time 01206231923 or 01206230688.

THANKS

Christmas Lunch St. George's 17th December 2010

Thank you to all of you who supported the lunch this year. Twenty people sat down to home-made leek and potato soup, followed by baked potatoes, quiche and/or ham, and ending with home-made mince pies and cream. The lunch was a very social,

friendly and jolly festive occasion with crackers and party hats, and we made some money after expenses £115 for the General Fund – Thank you all

Jenny & Barbara.



THE RECTORY, GREAT BROMLEY

Dear Friends,

On 2nd February the Church will celebrate the festival of Candlemas. This commemorates the purification of the Blessed Virgin Mary 40 days after the birth of her son Jesus, as well as the presentation of the baby Jesus to God in the Temple at Jerusalem.

The Gospel of Luke says that Jesus was met by Anna and Simeon. Simeon held the baby Jesus and called him a Light to the world.

Ritual purification stems back to a Jewish tradition that women were considered unclean after the birth of a child. For forty days for a boy and sixty days for a girl, women weren't allowed to worship in the Temple. At the end of this time, women were brought to the Temple or to the Synagogue to be purified. After the ceremony women were allowed to take part in religious services again.

Candlemas is a festival of light because Simeon prophesied that Jesus would be "a light to lighten the gentiles". And Candlemas became the day that all the Church's candles for the year were blessed.

On Candlemas night, many people place lighted candles in their windows at home. Like some other Christian festivals, Candlemas draws some of its elements from Paganism.

In pre-Christian times, it was also the festival of light. The ancient festival marked the midpoint of winter, half way between the winter solstice (shortest day) and the spring equinox.

Some people lit candles to scare away evil spirits on the dark winter nights. People also believed that Candlemas predicted the weather for the rest of the winter.

"If Candlemas Day be fair and bright
Winter will have another fight.

If Candlemas Day brings cloud and rain,
Winter won't come again".

In the Christian calendar Candlemas is the midpoint between the birth and the death of Christ. We look back to the Nativity and then begin to look forward to Easter.

Love to you all, *Fr. Robert*

IN THE GARDEN IN FEBRUARY

If you dug over your plot before the bad weather in December, now is the time to prepare it for sowing. Rake over to remove stones and to leave in a fine tilth; it would also be a good idea to cover a part of it with plastic bubble sheeting or pieces of carpet, in fact anything that will warm the soil. Leave for a week or so then the first seeds can be planted. The first seeds to sow are carrots and parsnips. If your soil is stony, to stop parsnips and carrots from having forked roots try with a crowbar or broomstick to make a hole and rotate it round to form a hole approximately a foot deep and make the hole like an inverted cone. Sift some fine compost to fill the hole then plant two seeds in each hole and remove the weakest seedling when have germinated. The distance for the holes is 8" apart in rows 18" apart.

Most of the cabbage family can be planted at the end of the month in a seed bed or in boxes of fine compost, cover with glass until they are through, then start to harden them off. When big enough to handle, around April, plant 8" apart in rows 18" apart.

Try a short row of early potatoes at the end of the month. Plant seed potatoes 8" apart but have some protection handy in case of frost.

Frank Griffiths



ST. GEORGE THE MARTYR, GREAT BROMLEY

united with St. Mary the Virgin, Ardleigh



Church of England Services for February

Sunday 6th	8.00am	5th Sunday before Lent Eucharist	<i>St. George the Martyr</i> <i>St. Mary the Virgin</i>	
	10.30am			Parish Eucharist
Sunday 13th	8.00am	4th Sunday before Lent Eucharist	<i>St. Mary the Virgin</i> <i>St. George the Martyr</i> <i>St. Mary the Virgin</i>	
	10.30am			Parish Eucharist
	6.30pm			Evensong
Sunday 20th	8.00am	3rd Sunday before Lent Eucharist	<i>St. George the Martyr</i> <i>St. Mary the Virgin</i> <i>St. George the Martyr</i>	
	10.30am			Parish Eucharist
	6.30pm			Evensong
Sunday 27th	8.00am	2nd Sunday before Lent Eucharist	<i>St. Mary the Virgin</i> <i>St. George the Martyr</i> <i>St. Mary the Virgin</i>	
	10.30am			Parish Eucharist <i>followed by St George's Annual Parochial Church Meeting</i>
	6.30pm			Evensong
Sunday 6th March	8.00am	Sunday next before Lent Eucharist	<i>St. George the Martyr</i> <i>St. Mary the Virgin</i> <i>St. Mary the Virgin</i>	
	10.30am			Parish Eucharist <i>followed by St Mary's Annual Parochial Church Meeting</i>
	7.30pm			Holy Eucharist with Imposition of Ashes
Wednesday 9th March		Ash Wednesday - The First Day of Lent	<i>St. Mary the Virgin</i>	

Holy Communion every Friday at 11.00am at Seven Rivers, Hall Road, Great Bromley.