



## PRIDE OF TENDRING AWARDS

FRIDAY 7TH FEBRUARY

Jenny and John being presented with their Award by Ian Davidson the Chief Executive of Tendring District Council

### **St Helena Hospice Stall (Briar Road)**

As you probably know we have won a "Pride of Tendring Award" for our Hospice Stall. Thank you, Fred, for nominating us. We would like to say Thank You to all of you who have, over the years, donated produce etc to the stall, purchased from the stall and in a

lot of cases, both. Without your support we would not have been able to have raised the amount of money that we have and the stall would not be the success that it is today from its humble beginnings in 2008 (the little white table).

Once again thank you ALL for helping to make us the proud recipients of this Award.

# THE FIRST PAGE



I write this the day after the storm. The day is sunny, warm(ish), there is the silence of a near windless day, the birds are singing their hearts out and it is very peaceful after the storm lashings and noise of the past few days. Above all, it isn't raining!

On the next page are some photos taken by Hugh Frostick of the new – temporary – lakes that have appeared round Great Bromley. The lanes have been flooded in places and the working ditches full to capacity. During January 135mm of rain fell.

My vegetable plot is under water so the perfect excuse for doing nothing there with other parts of the garden boggy. All the dry area plants I have put in over the years must be overwhelmed. I cannot begin to imagine what it must be like for people to live for weeks on end in the flooded areas of the country and it will not be much easier in the coming months when, although the water will have receded, their homes will still be drying out. Going on from people's houses and their miseries what will have happened to the wildlife? The domestic and farm animals have been re-located but the worms, so essential to the wellbeing of the ground, will have drowned. Slugs, snails, overwintering insects, pupa, eggs as well as the small and larger animals who live underground – what has happened to them? They can't all have escaped, many will presumably have drowned. Once the water has gone when

will the birds return? There will be no food for

birds, animals or insects as, I am told, any vegetation dies and starts to rot after 21 days. The farmland will be so wet I imagine it will be difficult for new crops to be sown until the ground has properly dried out. All this will have a knock on effect for the land and countryside and the food chain. Time only will tell.

Neil Skinner reports on the broadband situation on page 21. Not a lot of change in the situation but, still looking to the future and a better rural service, please go to the website he mentions and register your interest. I know it is a bore and a number of us feel 'What's the point?' but the point is that unless we do we could be consigned to the 'also ran' heap and not get a speedy internet any time soon which will subsequently not be good for our children, the village or possibly even house prices.

On a lighter note my snowdrops this year are wonderful. They are bigger and taller than usual which I can only ascribe to more moisture and the mild conditions.

Keep warm and dry.

**MATERIAL** for the **APRIL** edition of 'The Bromley Messenger' should reach the

Editor, Leonie Henderson, by **14th MARCH, 2014** please. Contributions from anonymous sources will not be printed. Whilst the editor welcomes contributions, photographs etc this is on the understanding that there is no obligation to publish, that the item may be edited and that there is no breach of copyright. Publication is in good faith and neither the editor nor the publisher accept any liability in respect of the content of any article, photo or advertisement, including any error or omission, responsibility for which remains with the author.

Copy can be delivered by hand, sent by post or e-mail (see inside back cover) or via the link on the websites [www.greatbromley.org.uk](http://www.greatbromley.org.uk) or [www.littlebromley.org.uk](http://www.littlebromley.org.uk)

For details of availability and costs for **ADVERTISING** in the 'The Bromley Messenger' please contact the Treasurer on 01206 230537

***Please support the sponsors of our magazine.***



***PLEASE SUPPORT OUR SPONSORS & ADVERTISERS***

# VILLAGE HALL TRUSTEES



I must admit that I did not know what to expect. A night of mirth and mysteries. Could be a load of old I don't know what. I was very, very pleasantly surprised. The Charles Dickens night was light, funny and very entertaining. It was another great night down at the Hall. The tricks and illusions were too clever to describe but although I am a country boy they certainly had me fooled. I was not alone, the tables were full and everyone had a great time. Well done to Mary for making the original booking and for Martin and Kate who helped to bring it all together on the night. Not only was the night a great success but the Hall benefited by making a profit of about £390. Well done and thank you to all who helped make this night another good one down at the Hall.

A bit late but still interesting, this is the breakdown of the monies taken during the Christmas Fayre.

Grotto and Wreath making £31, Jewellery £14.75, Cards £16, Stocking Filler £83.50, Buzzer £24.80, Tombola £110, Christmas decorations £112.50, £1 draw £41, Lucky dip £25, Plants £75.54, Refreshments £127.64, Darts £17.90, Book stall £30.64, Cars £41, Bric a brac £18.50, Hamper £75.40, Raffle £480, Cakes £181. Total taken £1506.26 split 50/50 with the Church

The Film night plans are moving with committee members Jacquie Terry and David Beech doing a bit of research on how other Halls in our area run their events. It's looking like a visit to Langham and or



Polstead is being planned. If we think it is worth doing we may well run a test night so watch this space.



Thinking about holding a special event? Thought of hiring the Village Hall? Our prices are very competitive with a Village resident being able to hire the main hall for as little as £14.00 per hour.

The full prices per hour are:- Village users, Main Hall £14, Millennium Hall £8, Committee Room £6, Small Hall £5, Kitchen (in isolation, non commercial) £5, Main and Millennium Hall £20  
Non Village resident Main Hall £16.50, Millennium Hall £9.50, Committee Room £7, Small Hall £6, Kitchen (in isolation, non commercial) £6, Main and Millennium Hall £23.

Over the last few years it has been upgraded to one of the better halls in the area with the exterior painting, new kitchen, new toilets, interior painting, floors sealed, new cleaning regime, new heating controls and a large de-clutter. Details of the Hall are on the web site or if you have not been down to the Hall recently why not take a look and see if we can help you? Mary Fawcett is in charge of our booking and her details are on the inside face of The Bromley Messenger.

That's all for now, as always thank you for your support. Let's all make the most of Great Bromley Village Hall. Let's use it, not loose it!

Next meeting Tuesday March 11 2014 at the normal time of **8:00pm**.. As always all welcome.

*David Beech*

## IN THE GARDEN WITH KATE



DrawingTeachers.com, Artist Michael Thomas

My garden is totally confused. In between all the rain showers, I was looking around to see what was flowering, and I found violets, periwinkle, aconite, snowdrops, cyclamen, iris as well as the more normal box and mahonia. My hellebores are almost in flower, and to top it all, I found a rose that had evaded being pruned bursting out of its bud.

I do feel however, that with all the rain I should probably look at swamp and marsh plants. Once again the West Country has been clobbered, and I have no doubt that the villagers of Muchelney have long got past the excitement of going to work and school by boat. One has to wonder if people living in these areas should routinely build their houses on stilts.

However, to the garden. It is difficult to do any work in the garden when it is so wet. It can't do the lawns any good to be squelched upon, and the flowerbeds are not much better. I recently did some broad bean planting in the raised beds of my vegetable garden, and had a robin practically sitting on my head. There were so many worms just under the surface that he must have thought he had won the lottery.

I have started sowing seeds in heated propagators- chillis and tomatoes, and will soon plant cucumbers, courgettes, aubergine and squash. Half hardy flowers can be sown, but again will probably need heat.

Dormant flower tubers such as dahlia can be started off in the greenhouse, and very early potatoes, summer cabbages and cauliflowers can also be planted in pots.

It is suggested that this month lawns are repaired and tidied, but personally I would wait until it is much drier.

If you have raised beds in the vegetable garden, they can be warmed by pegging down black plastic, and after a few days seeds of lettuce, rocket, radishes, spring onions, leeks, broad beans, parsnips, spinach and turnips can be sown. The added advantage of using the plastic is that it allows the soil to dry out a bit.

Bare roots shrubs can still be planted, and hardy perennials can be divided and replanted.

Dogwoods with ornamental stems should be hard pruned, and by now, roses, fruit trees and fruit bushes should be pruned- not however plums, which should be pruned in the summer.

Nets should be removed from ponds, hopefully the frogs and toads will be making a beeline for them soon to lay their eggs - last year we had such a late spring that we had almost no frog or toad spawn, but I am hopeful that this year we may have some.

The birds in the garden have been behaving quite strangely this year. Despite putting out good quality birdseed, we have had very few takers, and I often have to throw the seed away as it has germinated in all the rain. Last weekend I noticed that two blue tits were examining the bird boxes, possibly with a view to occupation. Seems very early to me.

I do hope you have all kept safe and flood free in this dreadful weather - I'm sure if it rains anymore I shall develop webbed feet!!!

*Kate Strowbridge*



## ***Impressions of a “New Girl”***

I have to admit that I was a bit more than “a bit” of a “Grump” when I arrived at Seven Rivers back in September 2013.

It had all happened rather suddenly. One minute I was in rehab at Colchester General which was wonderful. The care and treatment there were brilliant - even made the food bearable! Then I was told that I would be going to a place called Seven Rivers, out in the sticks somewhere.

The day I was supposed to come here, the ambulance didn't turn up - but nobody told me for over two hours. The first I heard was when they told me they would be taking me the next day instead.

Well, the next day came. “We won't feed you,” they said, “you can eat when you get there.”

One, two, three hours passed - no ambulance. It did finally arrive - over four hours late (and still nothing to eat!) - only for the grumpy driver to inform me “We are an ambulance service - not a blooming taxi service!”

Because it had all happened so quickly, I had not been able to gather up any personal bits to bring with me. So, when I finally did arrive on the doorstep, I did feel a bit like a “*waif and stray*”, and less than happy. “Up to 99”, as my mum used to say

- and 100 was boiling point!

Well, they opened the ambulance doors - and there was Pauline Strutt waiting for me. Her warm, welcoming smile was edged with concern because she knew all about the problems there had been getting me here.

She brought me in, gave me a lovely cup of tea and then took me up to my room. She wheeled me in to this lovely bright room, which I took to straight away. Two care assistants were there waiting to help me settle in. They were so solicitous and thoughtful, it gave me such a lift. They laid out my clothes and what few bits and pieces I had, just as I wanted them, taking care at every step to actually *ask* me how I would like it done.

“Wow!” I thought, “It looks like I have really fallen on my feet here!”

And so it has proved. I think everyone does a wonderful job here at Seven Rivers - my “10 Star Hotel”!  
Thank you, everyone!



*Colin File*  
Volunteer Newsletter Editor.

# THE DOCTORS' SURGERY NEWS

## Great Bentley Surgery

March is here and hopefully the recent stormy, wet and windy weather will finally be firmly in our past. I'm looking forward to a bit of spring weather as I'm sure you all are too!

One subject which seems to be building momentum in the newspapers as I write is the issue surrounding "Care.data". Although every household in the UK will be receiving a leaflet explaining all about this, I want to clarify what is happening. From 1<sup>st</sup> April 2014, the Government is making it mandatory for GP surgeries to allow all patient's **anonymised** data to be automatically uploaded to the Health and Social Care Information Centre. This is for the purpose of helping the efficient running of the NHS by providing information about where resources are most required, but it also may get used for research purposes which can also include privately owned pharmaceutical companies. This government body will be in control of where this data goes and how it will be looked after into the future and it is completely out of our hands. You can opt out of your records being uploaded very easily, but you need to tell us. You can tell us in writing or just simply mention it to any member of staff on the phone or during a visit to the surgery. They will place a code on your record which stops your information ever being used in this way.

Don't forget that the Patient Participation Group meeting will be on the third Thursday of every month at 6.30pm in the Great Bentley Village Hall. The group needs new members and fresh ideas, so please come along on 20<sup>th</sup> March!

That's it for me for another month. I would now like to hand you over to this month's guest writer Di Woodward our Reception Manager.

*Richard P Miller – Practice Manager*

*"The myth of the fire breathing dragons"*



'Blood, sweat and tears' are normally associated with other jobs but also very apt for a doctor's receptionist whose working life is a very demanding one, which on occasion can also be a very messy one!

My team of nine dedicated and hardworking girls deal with up to 500 telephone calls during the working day - a lot of which are requesting urgent appointments. We do our best to accommodate all requests, but please do be "patient" with us as it can often be a real challenge. We do sometimes like to ask you questions about what's wrong in order to try to get you booked in with a clinician who can help you, but you do not have to give us details if you don't feel comfortable to. That said, it helps us to help you more often than not, so we will continue asking so I hope you all understand.

As well as the numerous phone calls we can also have 250-300 patients coming through our doors each day for pre-booked appointments. If you approach the desk and feel that we are ignoring you I apologise. We are instructed by the doctors to answer the phone ahead of patients who are in front of us, in case there is an emergency on the other end. I am incredibly proud of the service the receptionists offer at Great Bentley and have never seen any "fire-breathing" come from any of them in my eleven years here. They always give their best to try and make the patient's contact with the surgery a pleasurable one and our regular positive surveys maintain this pride. If you ever feel that you have reason to disagree, please do contact me and I will be happy to listen to your comments.

*Di Woodward - Reception Manager*



## ESSEX POLICE

If you need to talk to me for any Police Community problems, you can contact me on 07967466876, or 101 Ext 487603 (free phone) or email me [leslie.barnes@essex.pnn.police.uk](mailto:leslie.barnes@essex.pnn.police.uk). Please note if you leave a message I will try to reply to your call the day I am next on duty.

### Incidents in Great Bromley for January Nuisance Neighbour - Meadow Close

Good news that's it

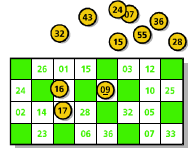
### PCSO Barnes 71909

Website: [http://www.essex.police.uk/my\\_neighbourhood.aspx](http://www.essex.police.uk/my_neighbourhood.aspx)  
Thorpe le Soken Police Station,  
Landermere Road, Thorpe le Soken, CO16  
OLQ

## FRIENDSHIP CLUB

Our January Meeting was an Open Meeting. Our Treasurer, Barbara, gave a summary of our accounts and collected subs which were due. We shall be applying to the Parish Council for a Grant once more this year.

After refreshments Members played Bingo and winners were able to collect their prizes from Pat, our Caller.



The March Meeting will be a talk on the brilliance of flowers, and the competition a flower from the garden.

*Sylvia Ward*

## THE COLCHESTER PUDDING AS SEEN ON TV

'Sweet Success' were invited to attend at Colchester Town Hall to meet Jamie Oliver and Jimmy Doherty and taste the revived 'Colchester Pudding', a delicious dessert made similar to a Trifle but even better. This was shown on Friday 7th February on channel 4 and repeated on Sunday. This is now on our menu as one of our options, it consists of a layer of loosely cooked Tapioca mixed with cream and orange zest, a layer of seasonal fruit, a layer of custard then piped soft meringue, torched to brown and sprinkled with toasted almonds. This can be served in a glass as a cold dessert or even better in winter in a large dish as a hot pudding. Delicious!! It is very adaptable and you can put your own



take on it. Don't be put off by Tapioca! Jamie describes it as little pearls, I describe it Rice pudding with 'balls'

*Linda Pinhey*

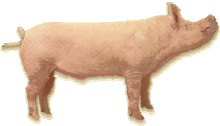


# TAILS FROM PRIMROSE FARM

What sort of pigs have you got then ???

A good question and one always answered with Large White 25 % Duroc 50% and Landrace 25% because this combination makes the pig ideal for the outdoor life and leads to succulent tender pork. Genetics that as a unit we have remained with because of the success and pork tasting so good.

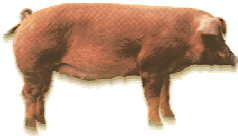
## THE LARGE WHITE



With exports to over 60 countries, the Large White is justified in its claim as the World's favourite breed. They also cross with and

improve other breeds really well, giving them a leading role in commercial pig production globally.

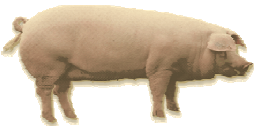
## THE DUROC



This is one well adapted pig! A thick winter coat keeps it warm through the wet, icy British winter and then moults off, leaving

the pig looking quite bald, but ready for summer! An ideal candidate for outdoor breeding, it produces succulent and tender pork.

## THE LANDRACE



This is a very versatile breed with a really high lean meat content – ideal for fresh pork and bacon. Cross breeding with the

Landrace is hugely popular in the profitable production of quality pork. The average pig pregnancy is 3 months 3 weeks and 3 days and they usually deliver On time. The average size of a litter is 12 with them all feeding in a very selected order on the mum. The mum is fed on a lactating ration which is high in protein which keeps the mum well nourished and the piglets well fed. If the litter numbers are variable then the piglet numbers are balanced out with fostering between the sows. This is often

done if the sow is not particularly attentive to her offspring and tends to spend a great deal of time outside the pig hut so the piglets are fostered out onto another lactating pig.

The shop is always quieter in January but the compliments are coming in for the Christmas meats and people are returning for winter roasts and hot casseroles. There is a British pork campaign in the media for promotion of British Pork on your Fork and our high British welfare standards to encourage to buy British.

## TWICE COOKED PORK BELLY

*with Cider, Apple and 5 Spice*

**700g (1½lb) Lean piece of belly Pork**

**300ml (½pt) Cloudy cider**

**Seasoning**

**5ml (1tsp) Chinese 5 spice**

**2 Star anise**

**2 Cox's apples, cored and quartered**

**15ml (1tbsp) Honey**

Preheat oven to Gas 4-5, 180°C, 350°F.

Take the flat piece of belly, dry the rind and score deeply with a sharp knife.

Line a shallow roasting pan with two large pieces of foil. Add to this the cider, seasoning and spices.

Place the belly onto the foil and tuck the foil around the joint so that the liquid is against the belly joint, but leave the top dry and exposed. Brush rind with oil and sprinkle with salt.

Open roast for about 1 hour then open foil parcel. Add the apples (add more cider if too much has evaporated), cover over the whole joint with foil and return for a further hour.

When cooked carefully open foil, drizzle rind with honey and place under a preheated grill. Cook for about 5 minutes to finish off the crackling.

Serve cut into thick slices, drizzle with sauce and serve with apples and Chinese steamed vegetables.

*Karen Moss*



The Committee had again got the mood just right; this was not just a listening meeting it was a doing meeting. Ann, one of our members, and her pottery tutor, Maggie, had very kindly spent some time preparing items of pottery to bring along and with the tuition of Maggie we were able to paint designs of our own choice onto the chosen item.

Maggie is a very experienced tutor in pottery and ceramics showing and explaining the different ways of decorating pottery. It was a little difficult to visualise the finished article as the colours do change after firing. All the members took

part and probably at the next meeting we may have our items returned to us after they have been fired.

Leonie, one of our members, had recently been to Denman College and had attended a Chatelaine Course. It was very intensive but extremely enjoyable and although the whole item was not finished we look forward to seeing this in the near future.

We had lots of fun, and finished with tea and biscuits before going home

*Joy Rolfe*



Charity No. 1136028  
Company No. 7099161

**Little Dragons Pre-School** - Great Bromley & Frating  
Church Meadow Bungalow, Hall Road, Great Bromley CO7 7TR  
Ofsted Inspected

Website: [www.littledragonspreschool.org](http://www.littledragonspreschool.org)

Email: [littledragonspreschool@gmail.com](mailto:littledragonspreschool@gmail.com)

OFSTED INSPECTED JUNE 2013 -  
**OUTSTANDING**

### **Cleaner vacancy**

We currently have a vacancy for a cleaner at Little Dragons Pre-School.

The times are 1 hour a day, Monday to Thursday at the basic rate of pay, which is currently £6.31 for those aged 21 and above.

You can choose the hour you wish to work but it **must** be after Pre-School closes so either late afternoon (after 4.30pm), early evening or early mornings (before 7.30am). The position is to start as soon as possible. If you are interested in applying for the position or would like more information please speak to Karen Montgomery.

Last month sadly we said goodbye to our Deputy Manager, Christina Antoniou-Garcia, who is moving to pastures new. We had a party lunch with the children on her last day and parents joined us to wish her all the best for the future. Christina has worked tirelessly over the last five years

and will be sadly missed by staff, children and parents alike. Lydia Forrest is taking her place as Deputy Manager and we would like to welcome a new member of staff, Karen Baker as she joins our team.

Just a reminder that we are collecting the 'Nestle box tops' and also from Sainsbury's so please tell family and friends.

We take children from the age of two years and offer a 'home visit' to families of children prior to them starting Pre-school. This gives the child the opportunity to meet their key-person in their own home, aiding the transition stage to pre-school. It also enables us to collect and share information in a confidential environment. For further information or to arrange a visit to the setting please contact us on the above number.

### **Dates for Diary:**

Thursday 6 <sup>th</sup> March	World Book Day
Mon 7 <sup>th</sup> April	Easter Holiday
Tuesday 22 <sup>nd</sup> April	Preschool reopens

# GREAT BROMLEY PARISH COUNCIL

[www.gbpc.org.uk](http://www.gbpc.org.uk)

Perhaps the first obvious topic of discussion is the recent heavy rainfall and the subsequent flooding in the village as a direct result. As I write this a further severe weather warning for rain has been issued so current water levels are likely to increase. Areas of flooding have been reported to the Parish Council and Cllr. Nicholls has been active in taking this up at County Level. If you are affected by flooding you are urged to take photographs and the relevant report can either be made to Highways at ECC direct, on 0845 603 7631 or at [www.essexhighways.org](http://www.essexhighways.org) or by contacting me via the Parish Council.

On the topic of severe weather and disaster generally, the Parish Council have been working with TDC in the preparation of a plan in the unlikely event a disaster should occur and affects the village as a whole. The Village Hall is now a designated Rest Centre and the Clerk, Cllrs. Owen Blowers and Kate Strowbridge are the initial and deputy ports of call in the event of emergency.

At the February meeting the Parish Council received a presentation from a play equipment company regards the possible installation of the same at Church Meadow. The aim of this equipment is to provide a play area in the centre of the village for as wide an age range of children as possible, and also to discourage play in dangerous areas of the car park. No decisions will be made in respect of the play area until a full consultation has been undertaken with the village, further information in respect of this features elsewhere in this and future editions of the Messenger.

The Parish Council had been circulated a letter from the Highways Agency regards the speed restrictions on the A120. We are told that the speed restrictions will be up and running by mid-March, a source of relief bearing in mind that further accidents have occurred at this traffic black spot.

The Parish Council had a long discussion regards the Horsley Cross development. Readers may be aware that it has been said that at a very late stage, this controversial development was included in the Tendring Local Plan. The Parish Council are trying to get to the bottom of whether it was always included in the plan, or added as a last-minute amendment with little or no consultation. When this matter has been clarified the Parish Council will be able to determine what further action, if any, is appropriate. In the meantime a complaint had been submitted to TDC in any event.

On a more positive note, the Parish Council had received a number of applications for grants and were pleased to be able to assist all those who had submitted a request. These grants are available to any group or organisation based within the village who organise services that can be accessed by residents of Great Bromley. It was determined at our meeting that there should be a policy document drafted for next year in order to provide further information and transparency in respect of how these grants can be accessed and how they are allocated.

The Parish Council have been informed that County Broadband vehicles have been seen working in the village however no official announcement has been made by them nor from any other company regards super fast broadband in the village. I will be looking into this further and if there are any further developments before next month the web site will be updated accordingly

Until next month

*Laura Austin, Clerk*

# 2014 EVENTS

## MARCH

- 2 WI meeting, Village Hall, 7.30pm
- 7 Women's World Day of Prayer, St Michael's church, Mistley, 10.30am
- 11 Meeting of Village Hall Trustees, Village Hall, 8.00pm
- 12 Gt Bromley Parish Council meeting, Village Hall, 7.30pm
- 13 Friendship Club meeting, 2.30pm
- 14 Lt Bromley Parish Council meeting, The Haywain, 7.30pm
- 16 A.P.C.M., St Mary's church, Ardleigh
- 23 A.P.C.M., St George's church, Great Bromley, 12 noon
- 29 Spring Litter Pick (see opposite for details)

## APRIL

- 6 WI meeting, Village Hall, 7.30pm
- 13 Gt Bromley Parish Council meeting, Village Hall, 7.30pm
- 17 Friendship Club meeting, 2.30pm
- 18 Easter Egg Hunt, Little Bromley
- 19 Essex & Suffolk Point to Point, Higham



## MAY

- 4 WI meeting, Village Hall, 7.30pm
- 14 Gt Bromley Parish Council meeting, Village Hall, 7.30pm
- 15 Friendship Club meeting, 2.30pm
- 17 Charity Quiz Night, Haywain, 7.30pm

## JUNE

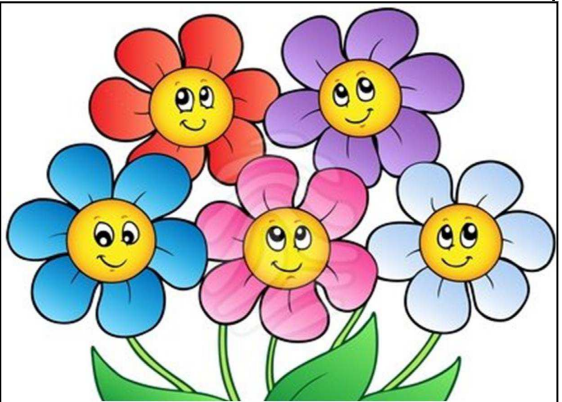
- 1 WI meeting, Village Hall, 7.30pm
- 7 Mind, Body & Spirit, Village Hall
- 11 Gt Bromley Parish Council meeting, Village Hall, 7.30pm
- 12 Friendship Club meeting, 2.30pm
- 27 Ladies Pamper Night, Little Bromley

## JULY

- 6 WI meeting, Village Hall, 7.30pm
- 9 Gt Bromley Parish Council meeting, Village Hall, 7.30pm
- 12 Tending Show, Lawford
- 18 Friendship Club meeting, 2.30pm

## AUGUST

- 3 WI meeting, Village Hall, 7.30pm
- 13 Gt Bromley Parish Council meeting, Village Hall, 7.30pm
- 16 Friendship Club meeting, 2.30pm



*Can you spare a few hours to help bring a smile to our gardens this year?  
Gardeners wanted to help with spring clean-up -  
WHEN it stops raining!*

## Village Hall Events

at the Village Hall, Great Bromley

### Murder Mystery Night

entitled 'Murder at St Cakes'

It is set in a school Founders Day celebration. I am really looking forward to this one!

Date tba

June 7th

provisional date for the next

### Mind Body and Spirit

event in 2014

more info soon.



### The Women's World Day of Prayer Service

is being held on Friday 7 March at St Michael's Church, New Road, Mistley commencing at 10.30am.

The service this year has been prepared by the women of Egypt, entitled 'Streams in the Desert'.

All are welcome. Refreshments will be served following the service.

### Spring Litterpick

will take place on

**Saturday 29<sup>th</sup> March**

meeting at 10.00am in the Car Park of the Cross Inn or at 10.15 at the Old Courthouse Inn.



Volunteers (the more the merrier) should bring appropriate footwear and gloves. Hi-visibility clothing and litter grabbers will be provided. As ever, our thanks to James and Heather at the Cross Inn for providing coffee afterwards.

More details can be obtained from Richard Perry on 01206 230537 or Owen Blowers on 01206 231010.



## Mum's the Word

### at Messy

### Church!



Come and have some family time,

some messy fun and a light lunch

on **Saturday 22<sup>nd</sup> March**

10.00am - 12.30pm,

at **Great Bromley Village Hall**

**All Welcome!**

For more information please contact:

Carol Cordwell: 01206  
395103

United Benefice of  
Ardleigh and the Bromley's

*Suggested Donation of £1.00 per child*



### Little Bromley Amenities Committee

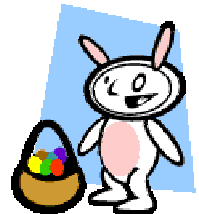
*Future Events*

7th April - Little Bromley Amenities Group Meeting commencing at 6pm at the Haywain

18th April - Little Bromley Amenities Group Easter Egg Hunt

17th May - Charity Quiz Night at the Haywain commencing 7:30pm.

27th June - Ladies Pamper Night



## PLANNING

### PLANNING DECISIONS

APP REF /DECISION	LOCATION	PROPOSAL
13/01291/LBC - refusal, listed building consent	Spread Eagle, Brook Street, Great Bromley	Proposed replacement of tile hanging with render on front dormers and replacement of front doors.

### PLANNING APPLICATIONS

APP REF	LOCATION	PROPOSAL
14/00036/FUL	Land at Colchester Road, Great Bromley, Essex	Erection of 1 no. five bedroom dwelling with detached garage
14/00050/FUL	Land between Fieldside and Eltone, Frating Road, Great Bromley	Erection of 4 no. new 3 bedroom detached chalet style dwelling with detached garages/carports served by new shared private drive off Frating Road
14/00064/FUL	Land South of Harwich Road, Great Bromley	Proposal to reinstate stable block and construct a new barn. Retention of gravel surfacing.

The Parish Council resolved to object to 14/00050/FUL, on the basis that the site with four dwellings is too cramped and the interior road too narrow. Also inadequate site lines on the access.

The Parish Council also resolved to object to 14/00064/FUL, as it was the Parish Council's belief that in 20 years there had never been a stable there, and it was also believed that a change of use application was required for equine use.

## BROADBAND

You will have read in last month's Messenger that a company called MML are working with Tendring District Council (TDC) to bring high speed broadband to the district, hopefully this year! The Parish Council is waiting further details.

TDC has again emphasised the importance of registering interest in any potential service, with Essex County Council (ECC) as they have a pot of money to put towards providing High Speed Broadband to rural areas. Demand recorded by residents will be considered when allocating funds, so basically if we haven't pestered them by registering interest we might miss out. As such can we please ask you to register your interest in getting High Speed Broadband to the village by going to

<http://www.superfastessex.org>. If you have already registered then it doesn't hurt to have another go!

Lastly, there have been sightings of County Broadband vans in the area. You may remember they were offering a service almost two years ago but then it all seemed to go quiet. At the time of writing we are not aware of anybody who registered an interest with them hearing of any developments recently.

As soon as the Parish Council hears of any developments they will be posted on our website – <http://www.gbpc.org.uk>

*Neil Skinner*

## REMEMBERING THE RANSOMS

I had a lovely day recently visiting Susan (née Ransom) and Alan Reilly in Warwickshire. We had a good old yarn about Susan growing up at Great Bromley rectory, whilst her fiancé Alan had lodged there in the mid-60s when he was studying, being in the 2<sup>nd</sup> intake at the new Essex University.

James Henry Ransom was our rector from 1948 until 1976 when he died whilst on



holiday in Scotland. His wife Lucy was a teacher at S. George's School for many years. Here they are pictured at the rectory with Susan.

Susan has a twin sister Jane, and an elder brother David.

Susan says her mother was not a good driver, only learning to drive when she was 50, and by which time they had a mini. (Previously, the old Rolls Royce as reported previously.) Her father wouldn't teach her or take her out, but P.C. "Nick" Nicholls agreed to do so.

After lots of lessons she somehow passed first time. She was never a confident driver nor drove too far. Alan added "She used to only go at 30 miles an hour, which on the open road was not much, but going into the garage? Hell, that was fast!"

It seems Rev. Ransom had a different opinion of Lucy's speed. He had been laid up in bed for a while and said "Mummy took off down the drive at such a pace this morning that the gravel from the drive came up to hit the bedroom window!" He reported to the family on another day that she came home from school, turned into the drive and hit the gate post. That caused one of the hub caps to come off

which preceded her down the drive, arriving at the door before her! One evening she was at school for a parents meeting; she had parked her car in the middle of the playground. After the meeting Charlie Pirie moved it for her, backing it neatly against the wall to allow others to leave. When she came to depart herself, she started the engine, foot on the accelerator, not realising it was still in reverse gear, so she smacked straight into the wall of the school! As Mr Ransom filled in the insurance form he teased: "Speed immediately before accident? Stationary!"

I was fascinated to be shown an old scrapbook that belonged to Reverend Ransom's secretary, Miss Honor Thomas, of whom I have written previously. Since that article I have received an interesting letter from John Hodge who recalls after



8am communion helping Miss Thomas up the hill, by pushing her chair whilst riding his bike. Miss Thomas lived at the Old Forge in Mary Lane. The scrapbook contains some fine pictures from 1947 of this charming cottage that is sadly no more.

Susan and Alan send their regards to all their old friends in the villages.

© Hugh G Frostick 2014

*With thanks to Susan & Alan Reilly for a lovely day and for sharing their photos and memories. Thanks too, to John Hodge for kindly writing to the magazine.*

## KITCHEN CORNER

### The Ultimate Beetroot & Chocolate Cake

Preparation time: 15 minutes

Cooking time: 50 minutes

250g plain cooked (vacuum packed) beetroot, drained  
200g quality dark chocolate (70% cocoa)  
200g plain flour  
200g unsalted butter, melted  
100g dark brown sugar  
100g caster sugar  
3 large eggs  
2tbsp cocoa powder  
2 tsp baking powder  
1 tsp vanilla extract  
Icing sugar for dusting

Pre-heat the oven to 180°C/Gas Mk 4.



Grease and line a 23cm loose bottomed cake tin.

Chop the beetroot into quarters and puree in a food processor.

Break the chocolate into small pieces and put to one side - some larger pieces will give the cake a great texture.

Add the remaining ingredients, including the broken chocolate, to the processor and whizz until well mixed. Pour into the prepared cake tin and lightly level out the surface.

Bake in the preheated oven for 45-50 minutes or until a skewer inserted into the centre comes out clean. The surface of the cake may have cracked a little. Allow the cake to cool for a few minutes in the tin before removing to a cooling rack.

Dust lightly with icing sugar and serve in wedges. For dessert, this cake is great with a little crème fraiche on the side.

*From the lovebeetroot.co.uk website*

## LT BROMLEY PARISH COUNCIL

Little Bromley Parish Council had their first meeting in January. At the meeting an update on the War Memorial work was given and the repairs should be started as soon as the weather improves. Volunteers for this are welcome - please email the Council if you would like to help. The Council also decided, that as no objections have been received to the proposed turning off of the Street Light, a letter is being sent

to the Electricity Company requesting that this is actioned. The Council have started the process to have a Vehicle Activated Sign installed in the Village - with the hope that this will encourage people to drive at the speed limit of 30 mph. An email has also been sent to our County Councillor requesting that the speed reduction to 30 mph at Bentley Road is looked at again. The Council have had a reply to our letter expressing concern at how the decision to include Horsley Cross in the Development plans was reached and this is still ongoing.

*Acting Clerk, Little Bromley Parish Council*  
littlebromleypc@gmail.com



### GREAT BROMLEY POST OFFICE at The Cross Inn

Ardleigh Road, Great Bromley CO7 7TL

Telephone: 01206 231073

Mon/Tues: 9.30am-2.00pm    Wed/Thurs/Fri : 10.00am - 2.00pm

Sat : 9.00am-midday

- Please note that there is now a wide selection of cards and wrapping paper available.
- A dry cleaning service is also available.

**Please ask for details at the counter.**



## CHARITY FUNDRAISING



### Breast Cancer charity walk....

On Sunday 27th April 2014 at 10.30 am we will be holding a Charity walk in Memory of Nicole Abbott, who passed away at a very young age from Breast Cancer. She had lived in the village for 35 years.

The Cancer Active Charity <http://www.canceractive.com> are promoting a 'healthy eating lifestyle' as a preventative or assistance to fight this life threatening disease. The walk will be from Frinton to Walton and back along the seafront. If

you would like to join us we would ask for a donation of **£10.00** to do so, no sponsors to find. Dogs are welcome also (no fee) and we will be holding a 'best dressed dog' competition.

If you are interested in coming along or just supporting us for our efforts by donating please contact us **before** the event so we can send out maps and further details to you and register everyone for gift aid. Contact details: Linda Pinhey on [Linda@sweetsuccesscatering.co.uk](mailto:Linda@sweetsuccesscatering.co.uk) and Suzanne Abbott on [1suzanneabbott@gmail.com](mailto:1suzanneabbott@gmail.com)

Thank you.



St Helena Hospice  
your time...your hospice

### Hospice launches Pier to Pier walk for 2014

St Helena Hospice is pleased to announce that registration is open for this year's Pier to Pier walk, which takes place between Clacton and Walton on Sunday 27<sup>th</sup> April.

Participants can either walk seven miles from Clacton Pier to Walton Pier or really go for it and walk back again for a 14 mile challenge. There will be a staggered start with people doing the longer distance starting at 10am and those doing the shorter walk starting at 11am.

Registration is free, although the Hospice ask that you raise a minimum

sponsorship of £25. Once you have signed up you will receive a sponsorship form, so you can begin raising money for St Helena Hospice, helping those in your local community affected by life-limiting illnesses. Registration closes on Tuesday 22<sup>nd</sup> April. There are limited places so participants should register as soon as possible to get a place to take part!

If you are interested in taking part in Pier to Pier, you can register online at [www.sthelenahospice.org.uk/piertopier14](http://www.sthelenahospice.org.uk/piertopier14) or pick up a registration form at any of St Helena Hospice's retail outlets.

For more information on the Pier to Pier event, or to get a form sent to you, call the events team on 01206 791740.



# ST. GEORGE'S (C OF E) SCHOOL, GT. BROMLEY

Head teacher: Julie O'Mara Telephone: 01206 230305

## Writing Project

We are delighted to have been one of the chosen 10 schools in Essex to take part in



the Primary Writing Project (Talk 4 Writing) for the next two years. The aim of this project is to accelerate pupil progress in writing by teaching specific writing techniques in

an effective and dynamic way. The programme has been written by a national educationalist, Pie Corbett. Class Two have written the report below on their Talk 4 Writing lessons.

We really enjoy Talk 4 Writing because we learn lots of new stories. We are able to retell the stories we learn as a class. Mr Holmes always asks us lots of questions. To remind ourselves of the plot we draw story maps. We have just learnt 'Quackling' a story about a duck who loses his quack. It was great when someone pretended to be the king. We asked the king questions about why he was unkind to Quackling. Then Quackling and the king pretended to have a telephone conversation. It was very funny. The king did a good job of tricking Quackling. Mr Holmes made a mini theatre and we took turns acting it out. We are now writing our own story. We are using the same plot as Quackling but changing the characters, props and scene. We have all drawn our own story maps. Sometimes Mr Holmes helps us make our sentences more

exciting on the flipchart, by adding more interesting verbs and adjectives. We always have lots of fun in lessons.

## St George's Sports

I sat waiting by the phone for the Year 5/6 Cross-country competition to be cancelled. But, it was on – and true cross-country conditions prevailed! Sixteen children from years 5 and 6 went to the Garrison to run a 1.6km course through muddy fields. All the children completed the course with Harvey Bell and Charles Godsell, putting in great performances, coming 4<sup>th</sup> in their respective races. The children were competing against 30 other children from local Colchester schools and all sprinted the last hundred metres with support and cheers from the spectators. As all the year 5 competitors from school

came in the top twenty, their combined scores meant that they finished third overall – well done



Charles, Noah, James, Harvey D, Courtney, Livvi, Maddy and Megan! The children were exhausted at the end but after recovering, all agreed that they had really enjoyed this character building event. Hopefully, next year with the school field works having been completed, we can prepare more thoroughly and do even better!

Mrs S Fairley

The **football team** went to play Ardleigh School. Cameron scored in the first two minutes, lifting the team and encouraging them. This was followed by a brilliant set

up by Harvey B allowing Cam to score again. At half time the score was 2-0, this score was helped by James C-H being fantastic in goal and Oliver and Lee playing brilliantly in defence. The second half proved equally as eventful with James P scoring his hat trick!! In the final moments, Ardleigh fought back and scored a goal. The final score was 5-1 – an excellent result! Man of the Match: Cameron Fairley.  
Mrs. Platt

## **Bikeability**

Over the last few weeks two groups of Year 6 pupils have been having lessons on how to ride a bike safely on the road. We had 2 instructors with us while we were learning. One was called Peter and the other Mandy and they were very kind. We were aiming for Level 2 and everyone in group 1 got level 2. The group 2 have one more session to go and we hope for the best for them.  
Cam Fairley and Oli Davis

## **LITTLE BROMLEY AMENITIES GROUP**

### **"Bingo Night"**

We held our second Bingo Night on



Saturday 8th February which had tremendous support from over 50



people. A special thank you to our Bingo caller Dawn who did a fantastic job in

keeping everyone amused and to everyone who supplied food for the buffet.

We raised £140 for the Alzheimer's Society. The event was so successful we have been asked if we could run it more often so we hope to fix another date soon - keep an eye on the event page.

### **Children's Easter Egg Hunt**

The Easter Egg Hunt will be held on Good Friday 18th April at the Haywain. Last year 45 children turned up to enjoy the fun and games so if you think you would like to come along ring Christine on 07767 238870 to book a place.



### **Ladies Pamper Night - "Colour Me Beautiful"**

The date for our Ladies Pamper Night has been changed to Friday 27th June. Further details will be posted nearer the time.

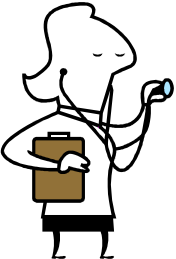
## PUBLIC INTEREST

### The Great Bentley and Frating First Responders – coming to a village near you!!

In January the group has been to a village near you. We have provided 346 hours of coverage and responded to 26 emergency calls during the day and night. Although based in Great Bentley and Frating we have been asked to attend calls in Weeley, Great Bromley, Arlesford, Thorington, Thorpe and Elmstead Market. Although not obliged to attend, when the call comes it is difficult to say no. We also provide a Heart Start presentation which covers the immediate actions in cases of a heart attack or stroke. If you belong to a group or organisation who would like a presentation please contact us.

So why this article, firstly to keep you up to date with our activities, secondly to ask for your support. Community First Responders are self-funded, and although trained by the Ambulance Service, we purchase our own kit – including a defibrillator and clothing. We are also always looking for more volunteers to help provide coverage and essential support in your village.

**What do we do?** We are volunteers from the local community who are trained by the East of England Ambulance Service NHS Trust, in basic life support including use of oxygen therapy and a defibrillator. We respond to medical emergencies such as Cardiac Arrest, Heart Attacks, Breathing Difficulties, Chest Pains, Strokes, Choking where reaching the collapsed person within the first eight minutes are vital to the survival of the patient. Living locally First Responders will usually be first on the scene pending the arrival of an ambulance crew who will arrive either in a rapid response car or an ambulance. We receive our calls from the



ambulance control centre following a 999 call from the public.

We do not attend dangerous incidents such as road traffic accidents, large incidents involving several patients or childbirth, nor do we attend children under 8 years of age.

#### To become a First Responder you should be:

- 18 – 70
- Physically fit
- Agree to a Criminal Bureau Check
- Have a full driving licence and the use of a car
- Agree to undertake training
- Attend the groups monthly evening meetings/training

**How much time does it take?** As a volunteer group we can do as little or as much as we like. The more volunteers we have the more cover we can provide. We also have a monthly training night – to keep up to date.

**We need more volunteers!!** If you are interested in helping but would rather not respond to medical emergencies we still need co-ordinators (record keepers), publicity/fund raisers. If you want to join us, give us a call Peter (07503153960) or Elliott (07807024692) or visit our website [www.Gbcfr.co.uk](http://www.Gbcfr.co.uk) or facebook at [gbcfr@live.co.uk](mailto:gbcfr@live.co.uk).

## GT BROMLEY & DISTRICT CRICKET CLUB



### 100 Club Winners for January

- 1st. Mrs Jill Frostick
- 2nd. Mrs. Lisa Davis
- 3rd. Mr. John Boulton

# PUBLIC INTEREST

## Brightstarz Display Team

The Brightstarz Display Team is based in Brightlingsea, and currently has 16 members whose ages range from 6-15 years of age. The team was started in October 2013 and has gone from strength to strength. They are now ready to take part in carnival fetes and competitions after much hardwork at training.

The team is totally self funding and have been busy raising funds for new equipment and uniforms, but still have a little way to go we need to raise another £1000 by the beginning of May and are looking for any help anyone maybe able to offer us to help us reach our goal. We hold regular car boot sales, tombola stalls, have done a 24hr sponsored twirl also. If anyone would like to donate any bric a brac or prizes towards our stall please feel free or any donations towards our funds it would all be great fully received.

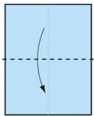
Also if anyone would like to book the team for their event please get in contact with us we would be more than willing to participate and show you our skills.

If you also have anyone interested in the joining this fun team, we take members both boys and girls from the age of 3 and upwards, and teach the art of baton twirling , Pom Pom work , flag, mace, dance and military marching. We currently train on a [Tuesday evening](#) at the scout hut from [5.30pm](#) and the first session is free, and a Thursday evening at Brightlingsea Community Centre from 5.30pm. For further information, or to make a booking or to help us reach our fundraising goal please contact us on [brightstarzdisplayteam@hotmail.com](mailto:brightstarzdisplayteam@hotmail.com) or call Sara on [07985717117](tel:07985717117). Many thanks for reading and any help you maybe able to offer

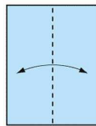
## HOW TO MAKE AN ORIGAMI BOAT

Make an origami boat and then float it! To make the boat last longer when it's on water, try using foil paper or grease-proof paper. Have boat races and see whose boat goes fastest!

1. Start with a rectangular piece of paper, coloured side up. Fold in half, then open.



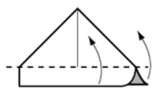
2. Fold in half downwards.



3. Bring corners in to centre line.

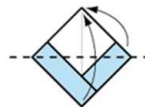
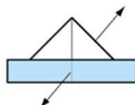


4. Fold uppermost layer upwards & do the same to the back.



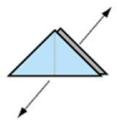
Crease well.

5. Pull the sides out and flatten.

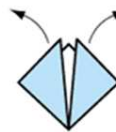


6. Fold front layer up to top, and do the same to the back

7. Pull the sides outwards and flatten.



8. Gently pull the top parts of the model outwards, making a boat shape.



9. Flatten well to crease all folds. Then open out slightly, forming a boat shape. Finished Boat.

Have fun.

## CHURCH JOTTINGS

There are members of "The Bromleys Church Community" who are always heard but seldom seen.

Our Bell Ringers are a dedicated band of folk who use special skills, learned over many years, to celebrate and commemorate events with us in the church's calendar throughout the year. We are fortunate indeed to have bells in both our churches, St Mary's, Little Bromley where two of the bells are pre-Reformation and St George's, Great Bromley.

In St George's Tower we have seven bells, that is 6 plus one because one is "hung dead!" The tenor bell which is tolled

every Sunday calling people to church is rung from under the tower and is "hung dead". Six other bells are rung from inside the ringing chamber. The newest was cast in 1930, the oldest in

the early 18<sup>th</sup> century.

Campanology is a fascinating skill, David Wenden is Captain of the Bells and if you would like to join our band of ringers you are very, very welcome. Join a practice which takes place every Friday evening at 8pm. Please ring David 01206 250260 if you are interested. Every other Sunday our band of ringers can be heard calling the faithful to church at Weddings, Funerals, Saints Days and Church Festivals.

On the 14<sup>th</sup> February and 23<sup>rd</sup> April this year David's band are to attempt a Quarter Peal which involves ringing different methods (tunes) for nearly 45 minutes.

Previous wonderful achievements by our band are recorded on Peal Boards. We now have three and are awaiting a faculty

to restore them to their proper place on the walls under the tower.

It has been a tradition for over 200 years for the Captain of the Bells at St George's on his retirement to have his hat hung under the tower – visitors come from far and wide to view this spectacle. Next time you are passing pop in to see the hats, or better still join us for our Easter Services:

**Palm Sunday** 10.30am with procession of palms

**Good Friday** 2.00pm Non-Eucharist with hymns

**Easter Day** 8am Communion B.C.P.

or our **St George's Day lunch** on April 23<sup>rd</sup> at 12 noon.

### Easter Lilies

Donations towards the purchase of Easter Lilies in memory of loved ones may be given to Ann or Jenny.

Thank you for your generosity.

### Annual Parochial Church Meeting

March 23<sup>rd</sup>

Vestry Meeting 11.45am

Election of Church Wardens

ALL WELCOME

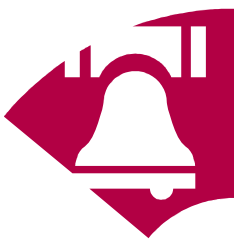
APCM Meeting 12.noon

Please join electoral roll (forms in church)

if you wish to attend this meeting and

share in the future of the churches in The Bromleys.

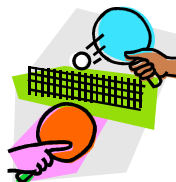
*Jenny Nicholls, Church Warden*



## THANKS

A big thank you to Mrs Ruth Lawson for her generous donation of a table tennis table and Mr Gerald Gurney for his generous donation of table tennis posts and net.

*Kate Strowbridge*



# ST. GEORGE THE MARTYR, GREAT BROMLEY



## Church of England Services - March

<b>Sunday 2nd</b>		<b>Sunday Next Before Lent</b>	
	8.00am	Eucharist	<i>St. George the Martyr</i>
	10.30am	Parish Eucharist	<i>St. Mary the Virgin</i>
	6.30pm	Evensong	<i>St. George the Martyr</i>
<b>Wednesday 5th</b>		<b>Ash Wednesday</b>	
	7.30pm	Sung Eucharist with Imposition of Ashes	<i>St. Mary the Virgin</i>
<b>Sunday 9th</b>		<b>1st Sunday of Lent</b>	
	8.00am	Eucharist	<i>St. Mary the Virgin</i>
	10.30am	Parish Eucharist	<i>St. George the Martyr</i>
	4.00pm	Evensong	<i>St. Mary the Virgin</i>
<b>Sunday 16th</b>		<b>2nd Sunday of Lent</b>	
	8.00am	Eucharist	<i>St. George the Martyr</i>
	10.30am	Parish Eucharist	<i>St. Mary the Virgin</i>
		<i>Annual Parochial Church Meeting to follow</i>	
<b>Sunday 23rd</b>		<b>3rd Sunday of Lent</b>	
	8.00am	Eucharist	<i>St. Mary the Virgin</i>
	10.30am	Parish Eucharist	<i>St. George the Martyr</i>
		<i>Annual Parochial Church Meeting to follow</i>	
<b>Sunday 30th</b>		<b>4th Sunday of Lent - Mothering Sunday</b>	
	8.00am	Eucharist	<i>St. Mary the Virgin</i>
	10.30am	Parish Eucharist	<i>St. George the Martyr</i>

**Holy Communion** every Friday at 11.00am at Seven Rivers, Hall Road, Great Bromley.