

THE BROMLEY MESSENGER

JULY 2014

VOLUME 29 NO 4



Little Bromley War Memorial

has had a complete makeover thanks to Ken Hatch and his helpers. The three garden areas have been planted out with red, white and blue flowers courtesy of four local garden centres: Hearts Delight, Deans Nursery, Craft Nurseries and Blenheim Garden Centre. Ken and his band spent two weeks digging, concreting and laying slabs to give us one of the best looking Memorials in Essex!



THE FIRST PAGE

I have been putting this month's Messenger together on a chilly, windy day during which I have been very happy to stay indoors with the computer! However, writing this following the Summer Solstice the weather has changed and on a gloriously hot summer's day we had a large family gathering, including the visiting Oz contingent, here in the garden with lots of different garden games for children and adults to play.

The flowers planted round the beautiful, tasteful and respectful renovations of Little Bromley War Memorial are complete and provide the final touch to the Memorial's restoration. It has been transformed through the hard work of the residents of Little Bromley. I admire it each time I pass.

Marring the villages though are the road signs placed to keep everyone safe on the roads, which have been vandalised with coloured spray paint. They are no longer effective as the defaced signs do not reflect or show up so well in daylight or at night.

The fields are changing colour as well as the summer progresses. The first harvests have begun as the farmers make silage and cut the grass for hay ready for winter feed for the animals. The potatoes have been topped, barley is turning golden and, no doubt, harvesters are already being dusted down ready for use very soon if the

weather continues to hold good.

On my walks round the footpaths and lanes of the village with the dog I have been admiring the male common blue damselflies along with their more difficult to see females, also the blue coloured male broad-bodied chaser dragonfly and his yellow female. The tortoiseshell butterflies are in abundance this year and the red admirals and meadow browns are appearing but, as yet, I have seen few peacocks and not many 'white' butterflies and not a single comma butterfly. Sadly the single turtle dove summer visitor I have had in my garden for years does not appear to have made it this year. A bird in decline I wonder if I shall ever see and hear it in my garden again.



Enjoy the warm weather as the holiday season approaches as well as the events being held this month, many in aid of charity. Have fun in the sun - the days are now beginning to shorten!!

Leonie Henderson

MATERIAL for the **AUGUST** edition of 'The Bromley Messenger' should reach the Editor, Leonie Henderson, by **14th JULY, 2014** please. Contributions from anonymous sources will not be printed. Whilst the editor welcomes contributions, photographs etc this is on the understanding that there is no obligation to publish, that the item may be edited and that there is no breach of copyright. Publication is in good faith and neither the editor nor the publisher accept any liability in respect of the content of any article, photo or advertisement, including any error or omission, responsibility for which remains with the author. Copy can be delivered by hand, sent by post or e-mail (see inside back cover) or via the link on the websites www.greatbromley.org.uk or www.littlebromley.org.uk

For details of availability and costs for **ADVERTISING** in the 'The Bromley Messenger' please contact the Treasurer on 01206 230537
Please support the sponsors of our magazine.



ST. GEORGE'S (C OF E) SCHOOL, GT. BROMLEY

Diocese Centenary Challenge

Our challenge during the half term holiday



was for children to visit a church that they had never been to before and take a photograph of themselves whilst there. We were delighted to receive several photos and a small prize was awarded during assembly to all those who took part. We were also thrilled to receive some more photographs this week and they will be awarded a prize too. Please visit our website to view the photos and read all about our Centenary celebrations.

Rounders Tournament

On Thursday 5 June, a team of Year Fives



and Year Sixes went to a rounders tournament in Colchester. We were in the small schools competition, unfortunately there had to

be nine players on at a time, so this meant that one of us had to sit out each match. We won every match except one and we drew in another. With these results, we made it through to the semi-finals! We had to play another two matches and we won them both and therefore won the small

schools rounders competition. As we were the winners we had to play against the big school, which sadly we lost. Everyone did really well and tried their best. We had a great time and had lots of new experiences.

By Erin, Leanne and Alexandrina

Alistair Cook Cricket Day

Oliver Harris and Jake Cooper went to see Alistair Cook on Thursday 5th of June 2014. When we got there we got a T-shirt to wear for the whole day. The T shirt said 'Cooky'! There were over 200 children at the Essex County Cricket Ground. We learnt shot put, cut shot and how to aim at the wicket when you bowl. Jake and I managed to hit the wicket once each. In the afternoon Alistair Cook sat down with all of us and we all jumped onto him to try and get our photograph taken. It was great fun and we were all laughing. At the end of our session we all got a mini cricket bat signed by Alistair Cook. It was our ambition to meet a professional cricketer; it was amazing to meet an English cricket captain.

By Oliver Harris and Jake Cooper

Eat Happy Project - Farm to Fork Trip

On Wednesday Class 2 went on a trip to Tesco. We went to find out where food comes from. We were met by Lisa and Tom the Baker. We saw how bread was



made, then we baked our own loaf. We also found out about the fish they sell. Then we tasted some cheese and fruit. We went into a freezer as big as our classroom. The temperature was -25 degrees. It was the best school trip so far!
By Nicholas Breeden and Scarlett Fricker

Day of Music at St George's Church

The walls of St George's church will be ringing to the sound of music on Friday July 11th, when St George's school holds its first ever Music Day. Between 9am and noon, and 1-2pm, each of the school's four classes will be visiting the church to perform songs and instrumental pieces.

The school's recorder and guitar clubs will also play and there will be solo performances from pupils who have instrumental lessons at school. At 2.15pm, the whole school will gather in the church to take part in a 'Songs of Praise' service, featuring hymns voted for by pupils and staff. All members of the community are very welcome to attend throughout the day - including the 'Songs of Praise' service. Please put this date in your diaries and we do hope you will be able to join us for some or all of the performances (further details with class timings to follow).



Little Dragons Pre-School - Great Bromley & Frating Church Meadow Bungalow, Hall Road, Great Bromley CO7 7TR Ofsted Inspected

Website: www.littledragonspreschool.org

Email: littledragonspreschool@gmail.com

OUTSTANDING - OFSTED INSPECTED

On Thursday 12th June we took part in the 'Barnardo's Toddle' around the beautiful grounds of Leonard Cheshire Disability. This year the theme was 'space' and the staff and children looked great all dressed up. The weather was lovely and some of the residents came out to cheer us along. A big thank you to all who took part and for the money you raised.

Afterwards the children were rewarded with 'rocket' ice lollies and had alien marshmallows and green jelly for snack later too.

To ease the transition of the children who will be starting school in September we have been working closely with St Georges Primary School. These children have been attending school assemblies with the pre-school staff and the reception teacher has been visiting us at Little Dragons. At pre-school they have also been practising to undress and dress for PE activities to prepare them for when they start school. We would like to say goodbye to the children leaving, we shall miss them very much and wish them many happy days in their new school.

Party Table and Chair Hire

Having a party for Pre-School children?

We can offer 4 perfectly sized tables & 20 chairs.

Deposit only £10

Tables only £5.00 each

Chairs Only £1.00 each

Collection Only - Contact us: Tel: 07857 503103

Email: littledragonspreschool@gmail.com

We take children from the age of two years and offer a 'home visit' to families of children prior to them starting Pre-school.

This gives the child the opportunity to meet their key-person in their own home, aiding the transition stage to pre-school. It also enables us to collect and share information in a confidential environment.

For further information or to arrange a visit to the setting please contact us on the above number.

Dates for Diary

Thursday 17th July Last day of term

Wednesday 3rd Sept Preschool re-opens

LITTLE BROMLEY PARISH COUNCIL

littlebromleypc@gmail.com

What a difference a month makes! This time in June's Messenger we were apologising for the War Memorial work not being completed and this month we are celebrating our finished Memorial. Ken Hatch - Vice-Chair of the Parish Council, had the design all worked out and with the help of volunteers from the Amenities Group, namely Robert Barrett, Brian Conner and Adrian Ludlow, they managed to get all the work finished within two weeks. Thanks to Ken and Bob, Brian and Adrian for doing all this. Thanks must also go to Dawn, landlady of the Haywain, for providing their lunches during the works and to all the other helpers and planters - Tony Downes, Ann Clark, Alix Ludlow, Chris Barrett, Neil Stock, Mary Hatch and to all the other people who have supported us during the works. The plants for the triangle areas were kindly donated by four local garden centres: Hearts Delight, Deans Nursery, Craft Nurseries and Blenheim Garden Centre. The slabs and stones were bought from Silverton Aggregates. We are really pleased with the final result and it's a fitting tribute in the year of the Centenary of WW1.

The Parish Council along with the Amenities Group plan on commemorating the anniversary of the start of the War on Saturday, 2nd August with a small ceremony at the Memorial and then tea and scones back at the Haywain. This event will take place at 3 pm and the Council would like to extend invitations to anyone who would like to come along.

Last month we also reported that our Jubilee Tree had been run over for the second time and snapped. At the time of writing this article, we can report that the tree has been replaced with a Crimson Acer which was very kindly donated and planted by Keith at Heart's Delight. We would like to take this opportunity of thanking him for his generosity and support

of the Village and thanks go to Neil Stock for arranging this.

The Parish Council have been lucky enough to be able to co-opt Neil Stock onto the Council - so we look forward to working with such an experienced Councillor in the coming year. Congratulations to us and Neil!

The Village Planters are doing well now and plants are starting to show over the top - thanks to the people who have been watering these. Our Footpath Warden is doing an excellent job checking the footpaths round the Village regularly and also strimming the odd one making it accessible.

If you think there's anything your Parish Council can do for the Village or if you need any help or advice then we can be contacted on littlebromleypc@gmail.com - next meeting of the Council will be 17th of July at The Haywain.

Little Bromley Parish Council

Please note

The new Clerk to the Council is:

Karen Tarling, Grove Cottage, Bentley
Road, Lt Bromley CO11 2PL

Tel: 07766704177

Email: littlebromleypc@gmail.com



GT BROMLEY & DISTRICT CRICKET CLUB

100 Club Winners May

- 1st. Mrs. Ann Fairley
- 2nd. Mr. Martin Frostick
- 3rd. Sarah Lawson

GREAT BROMLEY PARISH COUNCIL

www.gbpc.org.uk

First of all this month, no doubt you have noticed the fantastic flower tubs - of which there are 11 in total - dotted around the village. The Parish Council would like to say a big THANK YOU to the following businesses and individuals who sponsored tubs again so generously this year: Talismann Coaches, The Cross Inn, Primrose Pork, Greensmere, Deans, Selectacars, the Cricket Club, Sweet Success and Louise Carver-Hardy. Also many thanks to Deans who are kindly watering more tubs this year at the same cost as last year, and Peter Mylam of Logograph who has been making the signs for the tubs at no charge. Not forgetting Cllr. Kate Strowbridge, whose hard work and gentle powers of persuasion have yet again paid off!!

At the June Parish Council meeting much was discussed regards the War Memorial in Great Bromley and in particular the War Commemorations due to commence shortly. In the short-term the Parish Council was pleased to note that their planning application for a commemorative flag pole with poppies had been granted by Tendring, and work on this will commence very shortly. When this addition is formally opened, members of the village will be invited to attend along with members of the press. This discussion at the meeting led on to the long-term future of the War Memorial. Members of the Parish Council wish to enhance this most important monument by, perhaps, removing the hedgerow at the rear and installing a bench or perhaps planting a tree. At the front the possibility of laying more paving was discussed. Cleaning of the War Memorial was also discussed, but the general consensus was that any intense cleaning could result in the War Memorial becoming damaged. Perhaps you have an idea of how this area could be improved? Do let me know.

At the meeting the Internal Audit was also discussed. I was able to report that all relevant Parish Council documents and accounts along with bank statements had been delivered to the Parish Councillor's Auditor and no discrepancies were found. The relevant documentation has now been forwarded to the External Auditors and we will hear from them in several weeks' time. However, in the spirit of transparency, the accounts are presented to Council monthly and are available for residents to view monthly online via the Parish Council website.

You may have noticed from recent Minutes that the Parish Council have been making arrangements for the land they own, notably the area around the Village Hall and at Hare Green, becoming registered with the Land Registry. It has long been felt that to register their land in this way is ultimately good practice but also this will have practical implications. It is well known that the Parish Council lease land around the Village Hall to the Cricket Club, and the Cricket Club have been experiencing difficulty in applying for sports grants due to being unable to provide documentary evidence regarding the ownership of the land. The land registration process is legally complex, but the Parish Council hope that this will be resolved shortly.

Broadband in the village seems to have gone quiet in terms of feedback received - are you all happy with the service you are receiving? If this isn't the case, we would be interested to hear from you. The Parish Council were told - unofficially - that a competitor may be up and running in the village by July, but that remains to be seen.

The Parish Council have received some reports regards overgrown footpaths in the village - many of which have sprung up very quickly due to heavy rainfall followed by periods of very warm weather. These will be dealt with very shortly.

Lastly a vacancy has arisen on the Hare Green Committee - would you perhaps be interested in contributing to your village in this way? This is not a Parish Council post and the time commitment is not at all onerous. The recreation ground requires periodical inspection to ensure it is being maintained, ditches are clear, and similar. For any further information or to volunteer, please contact me.

Lastly just to remind you that our meetings take place on the second Wednesday of each month starting at 7.30pm at the Village Hall. Members of the public are encouraged to attend, and you are welcome to stay for the whole or part of the meeting. We are a friendly bunch who welcome views on the matters we discuss - which range from planning matters to crime statistics in the village (thankfully very low!).

Until next month - and let's hope this fine weather continues!!!

Laura Austin
Clerk to Great Bromley Parish Council

CHURCH MEADOW CAR PARK

will be closed for 24 hours on the August Bank Holiday (Monday 25th August).



LITTER PICK

The next Litter Pick, will take place on Saturday 8th November.

Watch this space for more details!



PLANNING

Decisions

| APP REF | LOCATION | PROPOSAL |
|--|--|---|
| 14/00573/DISCON - approval, discharge of condition | Land opposite Bush Farm, Hall Road, Great Bromley | Discharge of Planning Permission 13/00981/FUL |
| 14/00400/FUL - approval, full | Badley Hall Cottage, Badley Hall Road, Great Bromley | App. Under s.73 Town and Country Planning Act 1990 to vary condition 2 attached to planning permission 13/00575/FUL to substitute drawings 1261-09, 1261-08 and 1261-07 (April 2013) with drawings 1261-06 and 1261-07 (March 2014) to reflect a revised lounge and bedroom layout. |
| 14/00361/FUL - approval, full | Meadow Land, Hall Road, Great Bromley | Erection of commemorative stand and flag pole |

Applications

| APP REF | LOCATION | PROPOSAL |
|--------------|--|------------------------------|
| 14/00613/FUL | Badley Hall Road, Great Bromley, CO7 7UX | Retention of Boiler House |
| 14/00654/FUL | Glenmead, Frating Road, Great Bromley | Barn and open implement shed |

For some time now the Knit and Knatter Group (meets 2nd Wednesday of every month at Cheshire Home 2-4pm - all welcome) have been making jumpers and blankets to support



“Felsted Aid” (working name UK-AID). Felsted Aid is the only U.K. Charity which supports the children and families damaged mentally and physically by the dreadful disaster which happened at a nuclear reactor plant at Chernobyl in 1986.

In 1995 a Ukrainian doctor who is called Doctor ‘P’ by all his western friends had a vision to set up a rehabilitation centre in Chernigov for children damaged by the terrible events of 1986. The children of the 1986 disaster are now parents and their babies are being born with diseases and disabilities never seen before. There is no health service to support these families who are often outcasts because of the

stigma of their disabilities. Dr ‘P’ started with 84 such children and now treats 1,600. 1 in 4 children are now able to attend main stream school.

All the equipment, clothing, toiletries, nappies and sanitary goods are provided by donations from WIs throughout the U.K. and are taken by “Felsted Aid” in huge convoys from Essex (sixteen vehicles, seven tons of aid, twenty eight people, three times a year. WOW!)

Pauline and Alan who created “Felsted Aid” were invited to our meeting to collect our blankets, jumpers and school equipment, their talk and film show was extremely moving and poignant and at times very upsetting.

The current situation in Russia and the Ukraine only serves to exacerbate the dreadful plight of these innocent families who are dreadfully worried and frightened in these difficult times.

Great Bromley WI and all the WIs in Essex will continue to help and support this worthy cause. “A Child’s Smile is Priceless”.

Once a year the committee takes a backseat - and rest - and we have a Members’ Evening organised by a member. Following the talk by Felsted Aid this month, June, our meeting was organised and run by members, ably led by Jill Frostick. We thank them all for a most enjoyable and entertaining evening. The refreshments were particularly delicious. Thank you.

Jenny

FLYTIPPING

There has been another incident of fly tipping in the neighbourhood which happened on 6th/7th June. Old asbestos roof tiles, so expensive to dispose of properly, and not good to leave around in the broken state that they are now all in, is quite dangerous. The Council were

contacted on Saturday, 7th and the police also inspected the same day but at time of writing (11th) they are all still there. This was quite obviously dumped by a truck with a tipping device, as it appears to have tipped the back up and driven forward.



LITTLE BROMLEY AMENITIES GROUP

Wednesday Walking Club

The Amenities Group have a Walking Club that ventures out every Wednesday evening, no matter what the weather! In conjunction with the Little Bromley Footpath Warden, who plans all the walks, we walk all the Little Bromley and surrounding footpaths and keep a note of all the footpaths that need maintenance. Quite often after the walk we end up at The Haywain for pie and mash night. The photo shows some of the members with their dogs out on one of the walks.



Working Party

The next joint working party will be the clearing and painting of St Mary's church fence. The first working day is scheduled for **28th June**. We already have some volunteers but anyone wishing to help please email [the amenitiesgroup@gmail.com](mailto:amenitiesgroup@gmail.com) or turn up at 9:30am at the Church.

War Memorial

The Amenities Group are proud to say that several members worked alongside the Parish Council to help with the refurbishment and funding of the Village War Memorial - see the photos on the front cover and the write up on page 5.

Race for Life - 20th July

The Ladies of the Amenities Group will be entering a team again this year in Race for Life in Colchester Park at 11am on 20th July. If you would like to join the Group please email amenitiesgroup@gmail.com for details. A donation box has been placed on the bar at the Haywain.

Fund Raising

The **Amenities Group** have had a busy couple of months. We held a Quiz night on 17th May and raised **£381** - all proceeds will be donated to Wildlives Wildlife Rescue at Frating. On 16th May we held a Fish and Chip Supper at the Haywain and raised **£55** for Spinal Injuries Association. On 7th June we held a Bingo night and raised **£213.60** for Cancer Research in the name of Sarah Candy.

(Pictures overleaf.)

Christine - Amenities Secretary



THANKS

Recent Plant and Garage Sale at Ilex Farm

Very many thanks to all those who have supported this, not only this year, but for the last 16 years! Thank you to the many people who came to buy, to our loyal band of helpers and to everyone who has donated plants and various things for the garage sale.

Sadly, this is our last sale, but we are delighted to say that we raised £1,200 which has been split between Cancer Research UK and St Michael's Church, Thorpe-le-Soken Church. We do hope that you will support Kate Strowbridge next year as she hopes to hold a plant sale.

James and Ann Wild.

Great Bentley Running Club

teamed up with Great Bromley Village Hall to provide a hearty breakfast for runners and raise funds for the village hall at the same time. The running club meets at Great Bromley village hall every Friday evening during the summer months, and most Sunday mornings throughout the year to train and run.

However, Sunday the 18th of May was a run with a difference, as instead of driving home to make their own breakfast, for a small fee runners were treated to a table service full English in the hall.

Members of the local community joined them, as did a local cycling group. Many runners also brought their families along too, making it a great social occasion for all.

The breakfast, cooked by the ladies of the village hall was delicious, and a total of £326.25 was raised for the village hall fund.

Anita Rafferty
19th May 2014

FINANCIAL NEWS

With the 2014 Budget's shock changes to pensions still ringing in the ears of the financial services industry, the introduction of auto-enrolment into the UK work force, the new super ISA, the new rules relating to mortgages and pension drawdown, I think it can be safely said that there has never been a better time to ask questions about, and look at, our own financial position.

Every month I shall be approaching different areas of financial planning from mortgages and products relating to financial protection, through to pensions and investments; outlining new legislation and how it may affect us, and providing tips on how to make our money more tax efficient. (I find this is always well received!)

Super ISA. This becomes effective from July 2014. It allows investment of up to £15,000 per person. Where it differs from the current ISA is twofold.

Firstly, the £15,000 can be invested wholly in cash or stock and shares. Secondly, not

only can previous years' cash ISAs be converted to stocks and shares ISAs, but you can now convert stocks and shares ISAs back into cash ISAs. Prior to this, you could only transfer previous years' cash ISAs to stocks and shares ISAs, but not the other way round. This has always, in my mind, been a pitfall.

If you have any questions you would like answered please email me and I shall answer them, space allowing, in the next issue.

Jane Coster DipPFS of Emery (IFA) Ltd
email: janecoster@hotmail.co.uk
Emery (IFA) Ltd is authorised and regulated by the Financial Conduct Authority.

Emery (IFA) Ltd Chartered Independent
Financial & Mortgage Advisers 01206
710000

www.emeryifa.co.uk
j.coster@emeryifa.co.uk



ESSEX POLICE

If you need to talk to me for any Police Community problems, you can contact me on 07967466876, or 101 Ext 487603 (free phone) or email me leslie.barnes@essex.pnn.police.uk. Please note if you leave a message I will try to reply to your call the day I am next on duty.

Incidents in Gt Bromley for May

Car Fire - Harwich Road

Nuisance Other - Harwich Road - (Large bonfire)

Assault - Harwich Road - (Ashfern House)

Theft - Harwich Road - (Items taken from a house)

Animal - Carringtons Road - (Man bitten by a dog while cycling)

PCSO Barnes 71909

Website: http://www.essex.police.uk/my_neighbourhood.aspx Thorpe le Soken Police Station, Landermere Road, Thorpe le Soken, CO16 0LQ

2014 EVENTS

JULY

- 2 WI meeting, Village Hall, 7.30pm
5 Charity Car Wash, St George's School, 9.00am
Charity Barn Dance & Hog Road, Abbey Farm, Frating, 7.00pm
5/6 Colchester Military Tournament, Abbey Fields, Colchester
6 East Anglian Single Reed Choir, Lt Bromley church, 6.00pm
9 Gt Bromley Parish Council meeting, Village Hall, 7.30pm
11 St George's School Day of Music, St George's church (full details on page 4)
12 Tending Show, Lawford
13 Grand Summer Fete, Seven Rivers Cheshire Home, 1.00pm
17 Friendship Club meeting, 2.30pm
Lt Bromley Parish Council meeting, The Haywain, 7.30pm
20 Lt Bromley Amenities Group Team Race for Life, 11.00am
22 Lt Bromley Amenities Group meeting, The Haywain, 6.00pm
23 Holiday Hotdogs Messy Church, Village Hall, 10.00am

AUGUST

- 6 WI meeting, Village Hall, 7.30pm
13 Gt Bromley Parish Council meeting, Village Hall, 7.30pm
21 Friendship Club meeting, 2.30pm
25 Church Meadow closed for 24 hours

SEPTEMBER

- 3 WI meeting, Village Hall, 7.30pm
10 Gt Bromley Parish Council meeting,
Village Hall, 7.30pm
18 Friendship Club meeting, 2.30pm
WEA starts, Ardleigh Village Hall,
2.30pm
25 Lt Bromley Parish Council meeting,
The Haywain, 7.30pm

Primrose Pork Farmers' Market

2nd Saturday in every month
Outdoor & weather permitting
(With local producers and business!)
10-1pm

Next market is on Sat 13th July 2014
at Primrose Farm Gt. Bromley CO7 7TR

Great Bromley Social Badminton Club

will be stopping for the summer, with the
last date being July 22nd 2014. We will
restart in the autumn on 30th September,
5-6pm for children, and 6-7pm for adults.

Thank you to everyone who has been
playing.

Kate Strowbridge

Seven Rivers

Residential Care Home, Hall Road, Great Bromley

Reg. Charity No. 218186

Grand Summer Fete

Grand
Raffle!

Live Music!

Soggy
Sponges Throw!

Face
Painting!

Children's
Fancy Dress
Competition!

Licensed
Bar!

Sunday 13th July
from 1pm

**Dog Agility and rides galore -
Ice cold beer and so much more!**

Arena Events!

Tombola!

Barbeque!

Cake Stall!



Lucky Socks??!



Attaboy!!

Toy Stall!

Bouncy Castle!

Tea and Coffee!



Ice creams!

CHARITY CAR WASH



SATURDAY 5TH JULY
FROM 09:00-14:00

IN AID OF ST GEORGE'S SCHOOL PTA
AND CANCER RESEARCH UK.

£5 A CAR AND £7.50 FOR
A LARGER VEHICLE.

BACON BUTTIES AND
DRINKS WILL BE AVAILABLE.



Little Bromley Amenities Group



We will be entering a team in
the **Colchester Race for Life**
Sunday 20th July
at 11am

If you would like to join the
Team and help raise money for
Cancer Research email the
amenitiesgroup@gmail.com for further
details.

CHARITY BARN DANCE and HOG ROAST

Saturday 5th July
7pm – 11pm

With "**The Barnies**" calling
In aid of "Men United Against Prostate
Cancer"

at Abbey Farm, Frating
Price £10 (incl hog roast)
Bring your own drinks

Tickets Available
From:
Primrose Pork, Hall
Road, Great Bromley



HOLIDAY HOTDOGS at Messy Church!

Come and have some family time, some
messy fun and a picnic lunch
on Wednesday 23rd July
10.00am-12.30pm
at Great Bromley Village Hall

All Welcome

For more information please contact:
Carol Cordwell (01206 395103)
United Benefice of Ardleigh and the
Bromleys

Suggested Donation of £1 per child
(Accompanying adults free)

Scarecrows

After much deliberation, we have decided
not to hold a Scarecrow Festival this year.
We are sorry if you were already planning
what to make.

We have been really pleased with the
previous Festivals and the great selection of
entries. The lovely scarecrows which have
been on display around the villages, have
shown themselves to be something that lots
of people have enjoyed.

However we felt that by having
a break this year, our **2015
Scarecrow Festival** will be
even better than before.

Carol Cordwell



WEA ARDLEIGH BRANCH

Autumn Term
Ardleigh Village Hall
10 weeks commencing
Thursday 18th September at 2.30 p.m.

The Art of Persuasion Course Tutor - Colin Padgett

Again because of difficulties with Head Office in Cambridge, having been given one of our choices, then only to find at the last minute the Tutor was not available we have had to find another subject. This has proved difficult, we have been given Anatomy of an Orchestra with Chris Green in the Spring Term. We have had Chris before and I am sure we will thoroughly enjoy his course but we were offered as an alternative for the Autumn term another music course, Russian Music, and we felt that it would not be a good idea to have two music courses in one year.

We have therefore decided to go for the Course, "The Art of Persuasion" with Colin Padgett, who comes very highly commended as a Tutor. He writes about his course as follows:

1. The world can sometimes feel like one big shopping experience. Whatever area you care to consider, the choices on offer are broad and competitive. Everywhere we look there are offers, bargains, deals and never-to-be-repeated opportunities. As Winston Churchill might have said, "Never, in the field of human consumption, has so much been offered, so cheaply, to so many." The new dimension that we are all learning to cope with is that the selling pursues us everywhere. You cannot pick up your mail, log on your computer, walk along the High Street, turn on the radio or the television without "selling" assailing your senses. Even businesses like banks or dentists, which used not to seem to have anything to actually sell us, are adorned by product offers.

This course will look at the various ways in which the world tries to sell us things. We shall look at the words, the pictures, the

voices, the personalities and many other things that are mobilised with the aim of prising our money out of our pockets.

2. The course should be accessible to all. If you have ever found "junk mail" on your doormat, you will be fully qualified to take part. There is no reading list, but you might be encouraged to bring samples of your own to some sessions. As we are all surrounded by examples that we cannot ignore, I promise homework will not be set.

3. The course will look at the selling process from two specific angles. We shall look at the places where selling is attempted, including posters, catalogues, "junk mail" and the like. We shall also look at the advertising methods used by the "experts" who put these together, in particular the various things they appeal to in us in order to establish a link with us and make us want to buy.

4. By the end of the course, you should know a little more about how much "selling" goes on in our lives, recognise the differences between information and persuasion, be able to detect some of the trickier – or downright deceitful – methods that advertisers use, have a grasp of the categories of language use in advertising and promotion, understand how design and picture are used to influence our response to sales materials

5. The session activities will include lecture presentations, question-and-answer, picture and, where possible, video materials and a look at any examples course members would also like to bring along.

6. At the end of this course you should find yourself looking at the world around you in a new light. You may well see attempts to influence your buying habits more clearly than before. Who knows, you might even find yourself with money in your pocket that you might otherwise have spent! There will be no extra charge for this benefit!!

7. The intention behind this course is enlightening entertainment. Most of

the attempts made by those whose job is to sell things to us are intentionally amusing, Even those that do not appear funny at first glance often become amusing when studied. As we are surrounded by the sort of things the course will focus on, no challenging preparation for the sessions will be necessary.

8. It is confidently anticipated that anyone attending this course will find themselves able to participate actively from the outset. However, a few technical terms will crop up in the normal course of events and participants may well find that some of the jargon casually dropped by pundits and experts on radio and television will become familiar and more understandable as a result of our studies."

As can be see from the information above this is an entirely different subject to anything we have had before but I think it will be a course that is relevant to all of us and will be thoroughly enjoyed.

There is course fee for the ten weeks which will be around £46.50 (actual amount still to be confirmed) this is payable on the second week of term, so it gives you a chance to come the first week and see if it is the course for you. We have a tea break about half way through the course of about 15 minutes and the course time each week is one and a half hours so we finish around 4.15 p.m.

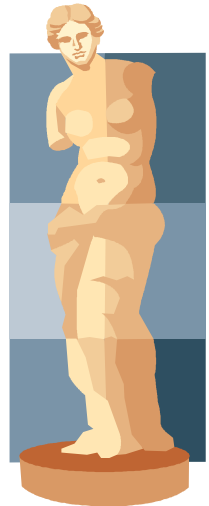
If you have any queries please feel free to contact me,
John Terry (Chairman Ardleigh WEA)
01206 230490

Ardleigh WEA

Andy and I are fairly new to the village and newly retired. We read in the Messenger last year about a course on Greek Mythology that the WEA were to run in the autumn. Neither of us had much knowledge of the subject but were interested to learn more. We did not really know what to expect but were very glad we made the effort. The autumn series consisted of 10 sessions between September and December, 2:30 until 4pm on a Thursday afternoon. The lecturer was exceptional and in our opinion would be hard to beat. There are a number of regular attendees but as newcomers we were made very welcome, so we went back for the Spring series on the History of the World in 100 Objects. The was also very good and having had a few months off

(no lectures in the summer months) we are looking forward to seeing what subjects will be on offer this autumn. I'm sure we will be going along. Why not give it a try yourself if you have the time free?

Judy and Andy Owens





NEWS RELEASE

Local NHS survey launched – what do you want from GPs, dentists and pharmacies working at weekends?



available 7 days a week, especially GP surgeries and other Primary Care services, like dentists and pharmacies.

The NHS is working towards 7-day per week working for many services, to ensure that patients get the same good care whichever day they are ill. Recently the North East Essex Clinical Commissioning Group (CCG) used money provided by government specifically to enable GP surgeries to open at weekends. Now we have the chance to review how well that worked and listen to patient views and experiences to design the most effective 7-day primary care service for our area.

The purpose of this survey now is to understand in detail exactly which of these services people would like to be able to use 7 days a week and how exactly people might then use them. The survey results will help us design the services more closely to what we all need as local residents and patients. Please click on the link below for the online survey, or contact us for a paper copy. Printed paper copies will be in your GP surgery soon.

Through our recent 'Big Care Debate' we talked with hundreds of people across the area in Colchester and Tendring and people were clear that they would like health and social care services to be

Thank you for taking the time to complete it.

<https://www.surveymonkey.com/s/XTPPX22NEECCGGPACCESS>

or short form, if easier to remember at: <http://tinyurl.com/l8gwk98>



St Helena Hospice
your time... your hospice
Registered Charity Number: 280919

St Helena Hospice opens new retail outlet

St Helena Hospice

is pleased to announce that they have opened a new retail outlet at 78-80 Culver Street East (opposite BHS) in Colchester.

The shop will be selling a selection of goods including clothes, home ware, toys, bric-a-brac as well as a large wedding and occasion's department set at the back of the store. It's open Mondays to Saturdays, from 9:00am until 5:00pm.

The Hospice is excited about having the opportunity to utilise such a great space

and very glad to be filling an otherwise empty outlet.

St Helena Hospice is looking to recruit retail volunteers to work in any of their retail outlets including six in Colchester, two in Frinton-on-Sea and shops in Halstead, Clacton-on-Sea and Dovercourt.

Volunteers can give as much or as little time as they can afford and St Helena Hospice really appreciates every minute of their time that people can give.

If you are interested in becoming a volunteer for St Helena Hospice, please look at the current opportunities on the website www.sthelenahospice.org.uk/volunteer



GREAT BROMLEY POST OFFICE at The Cross Inn

Ardleigh Road, Great Bromley CO7 7TL

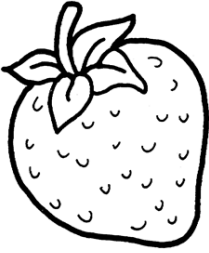
Telephone: 01206 231073

Mon/Tues: 9.30am-2.00pm Wed/Thurs/Fri: 10.00am - 2.00pm

Sat : 9.00am-midday

- Please note that there is now a wide selection of cards and wrapping paper available.
- A dry cleaning service is also available.

Please ask for details at the counter.



IN THE GARDEN WITH KATE IN JULY

Since I last wrote, our blue tit babies have fledged, hopefully successfully. They left early one morning, but as we subsequently had torrential rain and cool temperatures, I must admit I worry for their survival. We also witnessed a sparrow attacking the mother blue tit as she tried to feed the babies. It also squeezed into the nest box but fortunately the babies were unharmed as mother stood her ground. I have never seen that happen before - has anyone else?

It has been the weirdest weather, last week it was definitely chilly, yesterday violent thunderstorms, and today warm and 23c, a perfect summer day. Presumably an illustration of the fact that we in Britain have weather whilst the rest of the world has climate! I often wonder how the plants and animals manage to cope; after all, they can't put on a sweater. Despite all, the garden is blooming and really looks very pretty. The fruit trees and bushes appear to be having a bumper crop, and the only downside is the rather large number of hungry molluscs and aphids. Still haven't seen a ladybird!

Tender bedding plants and vegetables such as courgettes, pumpkins and squashes can be planted out now, and should romp away. I must admit I took a chance with the courgettes and planted them out a couple of weeks ago, and have already sampled some baby ones. They grow at ferocious speed, and need to be cut almost daily in order to stimulate new growth. However, if this summer proves like last year, which I personally feel is unlikely, watering will be an ever present chore. As it is pots need doing at least every other day, with weekly feed, and greenhouse plants such as cucumber, tomatoes, aubergine, chilli and peppers may need to be done twice daily if it is very

hot. I have rigged up a watering system in the greenhouse using a solar powered pump which takes water from the water butt which seems to work quite well. The other job that needs doing regularly is deadheading flowers. This stimulates new blooms as the plants naturally try and produce seed in order to reproduce. Our pond is looking very lush and the water lilies are producing buds, but no frogs or toads this year. Like many others, we had frogspawn, but it went peculiar and just disappeared. I have spoken to several people who said the same thing had happened in their ponds. Has anyone had any frogs or toads this year?

July is mostly about harvesting, lots of soft fruit such as strawberries (if you have managed to keep the birds and mice away), raspberries, gooseberries and currants should be ready, and also tomatoes, cucumbers and other salad crops.

A few seeds can be sown in July such as main crop carrots, early peas, spring cabbage, turnips, lettuce, radishes, endive and chicory - that is if you have any space! If you are at a loose end, it may be worth looking at your garden, and seeing what needs to be added or indeed removed in the winter. Planning beds is difficult in the winter, as one soon forgets where things are. A photo may be helpful.

Enjoy your garden!

Kate Strowbridge

FRIENDSHIP CLUB

On welcoming Members to the May Meeting Beryl announced that a Grant of £225. had been received from the Parish Council.

An outing has been arranged for Members to Perrywoods at Tiptree on Thursday 26th June. The coach will leave the Village hall at 1.30pm and return at 4.30pm. The cost is £8. for Members and £10. for non-Members.

At donation of £10. has been sent to the Bromley Messenger again this year, and a donation in memory of Frank Griffiths has also been made.

Beryl was also pleased to announce that a CD player has been donated to the Club

from Ray Rogers for future use. Many thanks to Ray.

Our Speaker for the afternoon was the Rev.Lovell who gave a very lively talk on famous people of Essex. Many of these lived in the Colchester area and various roads, buildings and statues bear their names - St Helena, Elizabeth Fry (nee Gurney) Jane and Elizabeth Taylor and the Astronomer Royal Mr Neave.

At the July Meeting Azzucar, a group of musicians will come along to entertain us and the competition is a record sleeve or a record.

Sylvia Ward

TAILS FROM PRIMROSE FARM

Paul our Pigman has retired and Robert has returned back outside more to look after the herd and a very capable butcher a local lady Becky Robinson has taken over the day to day management of the shop. Already she is very popular with the customers and she certainly knows her butchery and customer service. Kim and her are a great combination and are very well organised.

It is hog roast season and this trade is picking up. The BBQ season is upon us and especially with the up and coming world cup hopefully the sausage trade is picking up as well. The sausage of the month is Pork and Beer and is proving to be very popular, last months of Pork, honey and mustard were a great success!!! For summer picnics our pork pies are to die for !!! We have a variety of lots of farm shop foods now with local fresh bread, rolls and scones. For summer Hadleys ice-cream and at the moment local picked strawberries. Our cheeses are popular especially the Cropwell Bishop Stilton.

We are looking forward to our 3rd Farmers market on Saturday 14th June hoping for better weather than number 2. We will have a variety of stalls and if there is any

local business that would like to have a stall please pop in the shop and talk to Robert. The local farmers markets are still popular and you can be guaranteed a great bargain!!!

Outside the plans for some of the farm is to plant pollen and nectar for wild bird seed. This has been sown and the crows are really eating the seed before it has grown, I know it has been put in to feed the birds but before it has grown is a bit cheeky !! We still have about 20 geese regularly visit the farm and they are currently feeding from grassland. We have two resident ducks on the pond, which is looking a picture with abundance of margin plants including Yellow Irises.

We are helping to organise a **Barn Dance and Hog Roast** on 5th July at Abbey Farm Frating, and are selling tickets at £10 each, see poster on page 19.

A great evening is planned, it is local and supporting a really good cause, please help it be a great success and buy a ticket.

Karen Moss



THE FRIENDS OF LITTLE BROMLEY CHURCH

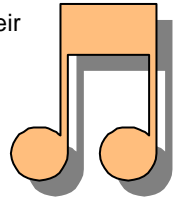
AGM with Music

On Saturday 24th May we held our yearly AGM with music and cake. River Band kindly performed some lovely music throughout the afternoon as over 35 people gathered together in Little Bromley Church. Our flower arrangers had provided beautiful arrangements that made the church look really nice. Following our theme of only using flowers from the garden or hedgerows, the displays all blended together naturally.

Homemade cakes of all types were provided by our local cooks to tempt everyone to indulge. It didn't take long to leave just crumbs on the plates. We then held our AGM presided over by our Chairman Gregory Frostick who works so hard for St. Mary's Church. The committee were all voted back on to serve for another year. With stopwatch in hand, Gregory then made sure that as the meeting continued, it didn't overrun! Afterwards, Gregory gave a very

informative talk about the history of the church. The church had previously been restored in 1882, when they had removed the Georgian pews. We also found out that two of the bells date back to 1420.

Afterwards, more refreshments were enjoyed whilst listening to River Band perform. We would like to thank all our helpers for their contributions and thank everyone for coming.



Please see our advert for the Concert by the East Anglian Single Reed Choir on Sunday 6th July at 6pm. Also don't forget our Folk Music Day on 10th August.

Carol Cordwell

EARTH, WIND AND FIRE AT MESSY CHURCH

Earth, Wind and Fire at Messy Church

On Friday 30th May, we held our Messy church session in Ardleigh Village hall. We learnt about Pentecost and the first birthday of the church. The children joined in with the various craft activities.

Decorated cakes, flaming headbands and blow painting were achieved along with windmills and beautifully coloured in flags. The children joined in with gusto when asked to throw their paper planes to Jenny. Then they helped to assemble a tree with the *fruits of the earth* to go into the church. Although attendance was slightly lower than normal, the light lunch disappeared

quickly as our Earth, Wind and Fire morning drew to a close.

We would like to thank all of our helpers and those who attended for a very enjoyable time.

Please look out for our next "**Holiday Hotdogs**" Messy Church on **Wednesday 23rd July 2014** at 10am to 12.30pm at Great Bromley Village Hall.

Carol Cordwell

THE DOCTORS' SURGERY NEWS

Great Bentley Surgery

I have some exciting news about being one of the first surgeries in Essex to be part of a major new technological development in the way prescriptions are handled in the NHS. From the middle of September, the Electronic Prescription Service (EPS) will be coming to Great Bentley. It will significantly streamline the process ensuring that prescriptions get to patients' nominated pharmacies within seconds. There will no longer be hundreds of fiddly bits of paper passed around the practice and the pharmacies each day which means less risk of a prescription being lost. The doctors will still need time to look at and authorise the thousands of requests we receive each month however, so we will still need notice before they will be ready. We are hoping that EPS will reduce the amount of time it takes however.

I think the easy way to think of EPS is thinking of it like a bank account. We credit money to your account; you go to your bank and withdraw your money each month. Your pharmacy is your bank and your prescription is the money. It really is as simple as that!

Some patients who are on regular stable medication use a service called 'repeat dispensing' where they get 6 months' of prescriptions at a time. This is like having a standing order where your account gets credited with 6 months' worth of prescriptions so that you can withdraw 1 each month. If anything changes during the 6 months, the doctor can change it all at the flick of a switch, making it easier for you, the pharmacy and the GP. We will be promoting all these better ways to get your prescriptions over the next few months, so don't worry if you don't understand this right now as we will explain it to everyone properly along the way.

Finally the Patient Participation Group is meeting every month on the third Thursday

which this month is 17th July 2014 at 6.30pm in Gt Bentley Village Hall.

Richard P Miller – Practice Manager



I too have some exciting news for you this month. Great Bentley Surgery is now accredited as research ready practice and we are now ready to participate in medical research. I will be the research Lead and I have an excellent and robust

team of 2 research nurses, a Health care assistant and research administrator. The high quality of medical care we enjoy today is built upon years of effort by physicians and other medical professionals investigating the causes of and potential treatments for disease. Only because of research are we in a better position to investigate, treat and deliver high standard care for patients. Research studies are important because they contribute to knowledge and progress on the treatment of diseases and disorders. Research is the fastest and safest way to find treatments that work. Our first research at the surgery was "Melatool – Q study" and this is a questionnaire based study to measure the prevalence of people at increased risk of melanoma. With association of National Institute of Clinical Research (NICR) we have already recruited 200 patients for this study. We are intending to recruit another 200 patients and we are expecting the research team to complete this low impact study before the end of this month. I take this opportunity to thank the patients who have already agreed to participate in this study. Future research studies in the pipeline are related to diabetes, COPD and asthma. One day we will beat cancer. The more research we do, the sooner the day will come.

Dr Nambi – GP Partner

ASKING FOR GOOD TIMES



On Sunday 25th May there was a cheerful gathering at Little Bromley Hall for the Rogation Service hosted by Natalie and Chris Smith, on a sunny day with some gusty winds. When we sang a verse of the hymn by the sheep field, the three farm dogs were among us and they were very curious as to what we were up to; had we gone on a bit longer I feel sure they would have joined in with a bit of howling! Natalie fed her beautiful lambs and managed to grab one of them to participate. Afterwards, a shared lunch* in the garden rounded off a delightful afternoon.

Our new Churchwarden, Gregory Frostick, gives us some background about the tradition. "Ascension Day, celebrating the ascent of the risen Jesus into heaven, falls forty days after Easter. The three days before Ascension Day are traditionally known as Rogation Days, from the Latin *rogare*, meaning 'to ask'.

....continued over...





that they too remembered and could pass on the knowledge to their children. In the educational spirit of those olden times the key points on the processional route were marked by boys being soundly thrashed or held by the ankles and bounced on their heads!
“Great Bromley and Little Bromley

“At Rogationtide in the old days elaborate processions walked the fields, with banners held high, litanies recited, and prayers said for good weather, abundant crops, productive animals, and deliverance from plague and famine. Rogation is asking God to bless the soil and its produce, the water, livestock, and the community. Later, when the harvest comes, it is, by God's grace, a time of thanksgiving and rejoicing. It isn't hard to see why these ceremonies go back into the mists of time when bad harvests and plague were common, and people sometimes went very hungry. Asking God to bless his people was a natural thing to do and everyone joined in this community event.

“Often, alongside the ancient Rogation procession, would be the ritual of 'Beating the Bounds'. This was literally beating along the parish boundary line with willow wands, to remind everyone where the boundary was. This was important at a time without accurate maps, and fields had only markers that could be moved or damaged. Children were always included in these events so



still maintain the Rogation tradition in a simple way on the Sunday before Ascension Day. The priest and parishioners gather at one of the farms after the morning church service and join in prayers and blessing for our villages, crops and livestock.

“The last beating of the bounds at Great Bromley and Little Bromley was in the 1980s with the Rev. Paul Davis. In the spirit of our modern times the thrashing and bouncing part was not included and the event was sponsored! Perhaps someone will have the energy to keep the tradition going in the 21st Century?”

continued over...

Here is a picture of the Rogation Service at New House farm in 1955 or 1956, courtesy of Mr. George Kempster.



Whilst I am not very religious myself, I am intensely grateful for the nature around us and I was glad for the chance to express an appreciation in a traditional, rural way. I do wonder why so few folk participate these days; maybe they feel they already "have it all" thanks to the supermarkets?

With thanks to Mr G Kempster and Mr G Frostick, and Mr & Mrs Smith for their fine hospitality. As always, any memories, photos or additional information gratefully received on this or any other subject!

*Tel: 01206 617324 Email: hugh@greatbromley.org.uk
© Hugh G Frostick 2014*

* I hope this is the correct term to use here. In New Zealand the phrase used is "bring a plate" - which can catch out new immigrants, such as myself a few years back. It does not mean the host is short of plates & cutlery, but rather, you are required to bring a plate or dish covered with some sort of food to share!

CHURCH JOTTINGS

New Bishop of Colchester

The Venerable Roger Morris, Archdeacon of Worcester, has been nominated by Her Majesty the Queen as the new Bishop of Colchester in succession to The Rt Revd Christopher Morgan.

Roger Morris said, "I am really thrilled to have been asked to come and serve the churches and people of this wonderfully varied part of Essex. Everyone I've met has been incredibly warm and friendly and generous – so much so that they have made coming here feel a lot like coming home.

"These are exciting times for the Church as we live out and celebrate our faith in new, engaging and transformative ways. This is a time in which we are called to re-imagine a vision for the church in the 21st Century which is authentic and relevant and helps us become all we are called to be. As Bishop, I believe that it is important to make a priority of being available, being approachable and being known. Bishops are often talked about as being shepherds and Pope Francis talks of the importance of the shepherd 'smelling of the sheep'. That means spending time with and knowing and identifying with the people we are privileged to serve. I am really looking forward to getting out and about and getting to know the people of Colchester Area"

Bishop Stephen added, "Roger comes to us with great experience of ministry in rural areas. His previous ministry as Diocesan Director of Parish Development and Evangelism, as rector of a number of parishes, and latterly as Archdeacon of Worcester will be a huge asset to the Diocese. Roger brings evangelistic flair and a strong teaching ministry. He will bring energetic and creative leadership to the Colchester Episcopal Area at a time of great opportunity for the church in north Essex.

Roger Morris (aged 45) trained for the ministry at Ridley Hall, Cambridge. He is married to Sally, a Deputy Head-teacher in a Secondary School and a Minister in Secular Employment (MSE). They have two teenage daughters, Fiona and Imogen. Roger stage-manages the Canopy Stage (previously 'The Performance Café') at the annual Greenbelt Arts Festival. His interest includes popular music, films, supporting Bristol Rovers and walking the family's two dogs.

I am very excited and honoured to tell you that my husband and I have been invited to St. Paul's Cathedral when The Venerable Roger Morris will be consecrated as Bishop of Colchester on 25th July at 11.00am and he will commence his ministry in Colchester in the autumn.

Jennifer Nicholls, Churchwarden

KITCHEN CORNER

Fruit Punch for Parties

Summer parties or BBQs are fun when the weather is good.! We always serve a fruit punch with is popular with all ages. So much more interesting than bottled drinks.

I use whatever fruit is available in the garden plus oranges lemons apples melon etc. Prepare and chop all the fruit small, except tiny ones like currants. Put them in a large bowl and cover with fruit juice from a carton and also some undiluted cordial to your taste. When ready to serve add plenty of ice cubes and fill up with lemonade or other sparkling drink. Use a ladle to serve into small tumblers or punch glasses. A word of caution! Wasps and flies like this too so if you are outside keep a cloth ready to cover it between servings.

Jill Frostick



ST. GEORGE THE MARTYR, GREAT BROMLEY



Church of England Services - July

Sunday 6th

8.00am
10.30am
6.30pm

3rd Sunday after Trinity

Eucharist
Parish Eucharist
Evensong

*St. George the Martyr
St. Mary the Virgin
St. George the Martyr*

Sunday 13th

8.00am
10.30am
4.00pm

4th Sunday after Trinity

Eucharist
Easter Parish Eucharist
Evensong

*St. Mary the Virgin
St. George the Martyr
St. Mary the Virgin*

Sunday 20th

8.00am
10.30am

5th Sunday after Trinity

Eucharist
Parish Eucharist

*St. George the Martyr
St. Mary the Virgin*

Sunday 27th

8.00am
10.30am

6th Sunday after Trinity

Eucharist
Parish Eucharist

*St. Mary the Virgin
St. George the Martyr*

Sunday 3rd August

8.00am
10.30am
6.30pm

7th Sunday after Trinity

Eucharist
Parish Eucharist
Evensong

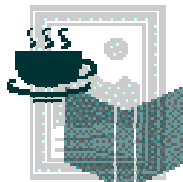
*St. George the Martyr
St. Mary the Virgin
St. George the Martyr*

Holy Communion every Friday at **11.30am** at Seven Rivers, Hall Road, Great Bromley.

LUNCH

at St George's church
Wednesday July 2nd
at 12 noon.
All welcome.

Change your library
book and lunch
afterwards.



FROM THE REGISTERS

Wedding

14th June Debbie Tyler and Grant Durrell.

Funeral

4th June Steven Walker.