

The Messenger

The Magazine of the
villages of Great &
Little Bromley

May 2026



Organisation and association contacts

Essex Police	Clacton Police Station	01255 221312
	Dial 999 in an emergency or call the non-emergency number 101 or alternatively	01245 491491
Medical Practitioners	The Surgery, The Street, Ardleigh CO7 7LD	01206 230224
	The Hollies Surgery, The Green, Gt Bentley CO7 8PJ	01206 250691
Parish Councils	Great Bromley - Lizzie Ridout, Clerk & RFO clerk@greatbromleyparishcouncil.gov.uk	
	Little Bromley - Lizzie Ridout, Interim Clerk & RFO clerk@littlebromleyparishcouncil.gov.uk	
Tending District Councillors	Alresford & Elmstead ward Cllr Gary Scott cllr.gscott@tendingdc.gov.uk	01206 820769
	Cllr Ann Wiggins cllr.awiggins@tendingdc.gov.uk	01206 825153
	Ardleigh & Lt Bromley ward Cllr Zoe Fairley cllr.zfairley@tendingdc.gov.uk	07957 860820
Essex County Councillor	Tending Rural West Division Cllr Carlo Guglielmi, 71 Colchester Road, Lawford CO11 2BJ Cllr.carlo.guglielmi@essex.gov.uk	01206 616072
Local History Recorders:	Great Bromley Mrs Suzette Clark, Elsmere, Back Lane East, Gt Bromley CO7 7UE suzetteclark@hotmail.co.uk	01206 252192
	Little Bromley - VACANT	07722 253962
Local Historian	Dr Hugh Frostick, Grove House, Frating Road, Gt Bromley CO7 7JL hugh@littlebromley.org.uk	
Parish Church	see back inside cover for full details	
Manningtree High School	Mr B Briggs (Headteacher), Colchester Rd, Lawford, Manningtree CO11 2BW	01206 392852
St. George's School	Mrs Rebecca Keitch (Headteacher), Brook Street, Gt Bromley CO7 7HX admin@st-georges-pri.essex.sch.uk	01206 230305
St. George's P.T.A.	VACANT admin@st-georges-pri.essex.sch.uk	
1st Ardleigh Beavers, Cubs & Scouts	Kevyn Connelly, Group Scout Leader ardeighscoutgroup@outlook.com	01206 233426
Air Cadets	Flt Lt Janet Brown 1334 Manningtree RAF Air Cadets	01206 395989
Carpet Bowls Club	Mrs J Bates, Dolphins, Colchester Rd, Gt Bromley CO7 7TN	01206 230529
Cheshire Home	Homes Manager, Seven Rivers, Gt Bromley CO7 7TR	01206 230345
Cricket Club	Paul Bird, Drumnascamp House, Chase Road West, CO7 7UA	07947 392141
Friendship Club	Mrs Sylvia Ward	01206 250674
Hare Green Field Knit & Knatter	Great Bromley Parish Council - Clerk@gbpc.org.uk Jenny Nicholls	01206 230688
Men's Club	Maurice Gallaher, Malting Farm, Malting Farm Lane, Ardleigh	07999 002467
Rotary Club	Manningtree & surrounding villages meet every Thursday at 7pm at The Crown, Manningtree	01206 250622
Stour Valley U3A	Membership Secretary www.stourvalleyu3a.org.uk	
Village Hall Secretary	Col Martin Frostick, Grove House, Frating Rd, Great Bromley CO7 7JL	01206 250263
Village Hall Treasurer and Bookings	Mrs Jackie Lear, 16 Meadow Close, Great Bromley CO7 7UG or gbromleyvillagehall@gmail.com	07543 974751
Village Hall	Parsons Hill, Gt Bromley CO7 7JA www.greatbromleyvillagehall.org.uk	
Women's Institute	Carole Newman	01206 251364

Adverts - For costs of advertising in The Messenger please contact Lizzie via email the1986messenger@gmail.com

Adverts should be sent to the Editor by the 14th of each month.

We can change your advert as often as you wish.

We do not provide a design service.



Great Bromley and Little Bromley have Facebook Groups to share things about the village - search for Great Bromley Community or Little Bromley Community.

THE FIRST PAGE

Dear all

Welcome to the May edition of our village magazine. We had one glorious warm day, quickly adjusted to the wonderful 20-degree sunshine... and then it disappeared again. Hopefully it won't be too much longer before short sleeves can come out properly.

If you're thinking about volunteering (#itsgoodforyou) and getting involved, there are plenty of opportunities in our area. Little Bromley Parish Council have a couple of roles listed on their page this month, and Essex Libraries have opportunities for young people aged 14+ on page 7.

Volunteering strengthens our villages in countless small ways, from supporting local services to keeping community traditions alive. Whether you can spare an hour or a little more, every contribution matters. If you're curious about getting involved, there's always a place for new hands and fresh ideas, and there's always something meaningful to get involved with locally.

Elsewhere in the magazine the third part of The Reverends William & Arthur Graham, and a piece about the Everitt family, both by Hugh Frostick.

Don't forget to cast your vote in the

local County Council elections on Thursday 7th May. Be sure to contact Tendring District Council's Elections team if you need help with any aspect of voting.

Awareness days in May include:

- 2nd - International Harry Potter Day
- 4th - Star Wars Day
- 12th - International Nurses Day
- 20th - World Bee Day
- 28th - World Hunger Day

I hope you enjoy this month's edition.

**Take care,
Lizzie**

*A big thank you to all our authors and contributors, our Treasurer, delivery team, and advertisers. If anyone wants to have a go at writing an article or a short story, please send it in - don't be shy. Any interesting or unusual hobbies, recipes to share or short stories, it's all welcome. As long as it follows the guidelines below, you really can't go wrong. Our village is a tapestry of rich history, diverse talents, and unwavering warmth. Each contribution to this magazine is a thread that strengthens the fabric of our community.

MATERIAL for the **JUNE 2026** edition of 'The Messenger' should reach the Editor, Lizzie Ridout, by **14th MAY 2026** please.

Contributions from anonymous sources will not be printed. Whilst the editor welcomes contributions, photographs etc. this is on the understanding that there is no obligation to publish, that the item may be edited and that there is no breach of copyright. Publication is in good faith and neither the editor nor the publisher accept any liability in respect of the content of any article, photo or advertisement, including any error or omission, responsibility for which remains with the author.

Copy can be delivered by hand, sent by post or e-mail (see inside back cover) or via the link on the websites www.greatbromley.org.uk or www.littlebromley.org.uk

For details of availability and costs for **ADVERTISING** in the The Messenger please contact the Editor via the 1986messenger@gmail.com

Please support the sponsors of our magazine.

THANK YOU TO OUR SPONSORS

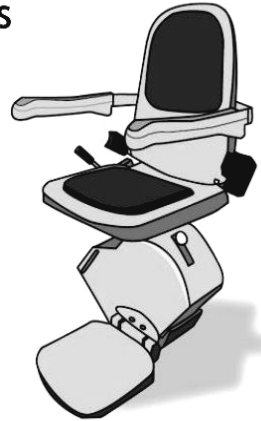
Essex Stairlifts Ltd

Your local stairlift specialist covering Essex and south Suffolk

- Straight Stairlifts • Curved Stairlifts
- Rental Stairlifts • New & Used
- Servicing & Repairs

For friendly, personal service telephone:

01206 231568



Email: sales@essexstairlifts.co.uk

www.essexstairlifts.co.uk

We are a small family firm who pride ourselves on our level of service.

We aim to provide our customers with quality stairlifts at reasonable prices, and offer friendly and simple advice enabling you to choose the best solution for your stairs and your particular requirements.

Office: Brook House, Brook Street
Great Bromley, Colchester
Essex CO7 7HX

Essex Stairlifts Ltd

Your local stairlift specialist



LITTLE BROMLEY PARISH COUNCIL

www.littlebromleyparishcouncil.gov.uk

Interim Clerk: Mrs Lizzie Ridout CILCA

Email: clerk@littlebromleyparishcouncil.gov.uk

April has been an eventful month for Little Bromley, and we have several updates to share with the community.

Bromley 10k

On 12th April, the Bromley 10k race was a resounding success! The weather was very kind to us, with clear skies and mild temperatures that made for perfect running conditions. Many locals took part and enjoyed the event, and we'd like to thank all volunteers, participants, and organisers for their efforts in making it such a great day. We hope to see more community events like this in the future!

Little Bromley Neighbourhood Plan

We are pleased to announce that the Little Bromley Neighbourhood Plan has been formally presented to Tendring District Council. We now await the next steps in this process and will keep the community informed as it progresses. This is an important milestone for our village and the future development of our local area.

National Grid: The Fight Continues

The ongoing battle with National Grid continues, with the next Planning Inspectorate hearings scheduled for the week commencing 27th April. Little Bromley has been strongly represented by Simon Bell, a barrister representing both Little Bromley Parish Council and Ardleigh Parish Council. Members of the Parish Council have also attended all hearings to ensure our village's voice is heard. You can view Simon's response to the ExA's First Written Questions (ExQ1) on the Parish Council website - www.littlebromleyparishcouncil.gov.uk under the notices.

Tarchon's New Infrastructure Project Application

Tarchon have re-emerged and presented an application for Development Consent for their enormous electricity converter station. They have sought a Scoping Opinion from the Planning Inspectorate on the scope and level of detail required in the Environmental Statement that will accompany their future application. As of now, there is still no clear information on where Tarchon plans to site their converter station (other than it will be within 5km of the existing Ardleigh/Little Bromley substation), making it impossible to submit comments at this stage. However, the deadline for submitting comments will be 6 May 2026, so we encourage you to stay updated.

May 7th Elections

Don't forget that Thursday 7th May is Election Day. A polling station will be open at the Haywain from 7am to 10pm. Make sure your voice is heard and take the opportunity to vote.

Village Planters

We would like to extend a huge thank you to Roly and Ken for their dedication to the village planters over the years. Their time, care, and commitment have helped beautify our village, and their hard work has benefitted us all. After many years of service, they have decided to step down, and we are now looking for volunteers to take over the planting up and maintenance of our six village planters. Whether you're already a keen gardener, want to learn more about gardening from others or just want to help out and keep the planters tidy and watered during the



ESCAPE



EXPLORE



UNWIND



ESSEX SUNSHINE COAST

WWW.ESSEX-SUNSHINE-COAST.ORG.UK

BRIGHTLINGSEA · CLACTON · DOVERCOURT · FRINTON · HARWICH · MANNINGTREE · WALTON



PART OF THE TENDRING HOLIDAY PENINSULA



TheSunshineCoastOfficial



TheSunshineCoast

Christopher THE LOCKSMITH

ARE YOUR LOCKS BEHAVING BADLY?

We Value Old Fashioned Customer Service
A Local Trusted Family Business Since 1989

 Specialist in UPVC & Wooden Doors

 No Call Out Charge

 No Fix No Fee

 All Work Fully Guaranteed

 10% Senior Citizen Discount



For More Advice & Help Call Christopher:

07772 111 222

www.christopherthelocksmith.co.uk

Frameworkks

Picture Framing for the home, office or exhibition

07770 408719

Bespoke picture framing
service with over
30 years experience.

3D Object framing - sports shirts, medals,
cross stitch, textiles & tapestry framing

Print & frame service - file to frame

Onsite framing - Parking

10% for Great & Little Bromley residents

www.frameworkks.co.uk



Unit C3, Seedbed & Business Centre
Severalls Business Park
Colchester, Essex
CO4 9HT



growing season - there's a job for you. It's a great way to meet others from our small and friendly community. We think it would be most efficient if each planter is maintained by residents local to each one, but all ideas and suggestions as to task allocations are welcome. If you are able to help or are just interested to learn more about what's involved, please email clerk@littlebromleyparishcouncil.gov.uk.

Community Speedwatch – Consideration of Re-Introducing a Local Group

At the March PC meeting members considered the potential re-establishment of a Community Speedwatch Group within the parish. A resident with significant experience in the scheme explained how Speedwatch groups were trained and operated. There is currently one approved Speedwatch site in Little Bromley, and equipment could potentially be shared with Great Bromley's group. A minimum of three volunteers would be required for each session, and volunteers would need to complete a short training session

before joining the scheme. If you would like to be part of the Community Speedwatch Group please contact clerk@littlebromleyparishcouncil.gov.uk

Litter Pick

On Saturday 18th April, a group of volunteers from the village met for a Spring Litter Pick. A huge amount of rubbish was collected from the within the village and surrounding lanes including a remarkable number of beer cans from along the verges - which seem to appear almost as soon as they're cleared! The Haywain Pub kindly provided refreshments to the volunteers afterwards. Thanks go to Elspeth Knott for organising the litter pick and to our group of volunteers for keeping our village tidy.

Next meeting

Our Parish Assembly and Annual Meeting will be held on Thursday 21st May commencing at the earlier time of 7pm.

We look forward to seeing you all around the village and wish everyone a lovely May!

*Best regards,
Little Bromley Parish Council*

DISCOVER LOCAL AND FAMILY HISTORY

Many people think researching family or local history is complicated or expensive, but your library card opens the door to lots of useful tools to make it free and easy!

Dive into their online resources to discover:

- Your family history
- The history of your community and local area
- The events that shaped the county
- The lives of notable people

Or explore the treasure trove of local information in your branch, including local studies collections, maps, or biographies of local people.

Your next great discovery could be waiting on a library shelf, or an online record just a click away!

Link: <https://libraries.essex.gov.uk/digital-content/our-online-library>



BENSON

School of Motoring

Your Local Automatic Trainee

Driving Instructor in Great Bromley



Robert Beales 07447 942 650

01206 209732

07777 2-4-6-8-10

www.bensonschoolofmotoring.co.uk

ARDLEIGH & DISTRICT HORTICULTURAL SOCIETY

PLANT & CAKE SALE



Sat 16th May 2026

9.30 – 11.30

(CASH SALES ONLY)

Ardleigh Village Hall,
Station Road, Ardleigh

www.e-voice.org.uk/ardleigh-horticultural-society



Fitness classes

Great Bromley village hall

Pilates – Tuesday 9.30am

Chair exercise – Thursday 11-12pm



Contact Sam 07968 335347

After just a few sessions you will notice a gradual increase in stability, mobility and strength within your body.

More classes - Mistley, Hythe & Colchester



www.gilesfitness.co.uk
sam@gilesfitness.co.uk



Alex's Grass Cutting Services

Do you need a hand with
general tidying up etc
Fixed prices, card payments
no fees or invoice

Strimming, leaf clearing
Public Liability Insurance E-bike trailer & tools

Based in Hilliards Road

Call or WhatsApp 07525030628



BEAR ESSENTIALS
WINDOW CLEANING

07748013461

[BearEssentials25@hotmail.com](mailto: BearEssentials25@hotmail.com)

ESSEX COUNTY FIRE & RESCUE SERVICE

As Station Manager in Tendring, protecting our community is at the centre of everything my team and I do. Over the past year, firefighters across Essex have responded to 731 house fires and here in Tendring alone there have been 53 house fires, tragically resulting in one fatality. Behind every number is a home, a family, and a life affected.

From attending incidents locally, we know that cooking is the leading cause of house fires, followed by electrical devices/appliances. Many of these fires were preventable with small changes, such as never leaving cooking unattended and regularly checking electrical appliances and cables.

One of the most worrying findings is that smoke alarms were only present in 78% of homes where fires occurred. Smoke alarms provide an essential early warning and can make the difference between escaping safely and being overcome by smoke.

The positive news is that help is available. Essex County Fire and Rescue Service offers free Home Safety Visits to residents across Essex. During these visits, firefighters or

members of our safety team can offer tailored advice, help you plan an escape route, and install smoke alarms where they are needed.

These visits are completely free and could help protect you, your family, or someone you care about. If you or someone you know could benefit, please take a few moments to book a visit.

Phone: 0300 303 0088

Online: www.essex-fire.gov.uk

Email: home.safety@essex-fire.gov.uk

Best wishes
Karl Amoss
Station Manager, Tendring



SUMMER READING CHALLENGE

Are you aged 14 or over and looking for something rewarding to do this summer? Applications are now open to become a Summer Reading Challenge Volunteer in your local library!

You'll help inspire children to enjoy reading, chat with them about books, and hand out rewards - all while gaining valuable experience, confidence and skills for your CV.

Apply online by Sunday 21 June and be part of something that makes a real difference this summer.

Link: <https://libraries.essex.gov.uk/news/summer-reading-challenge-volunteering>



ST. MARY'S CHURCH, LITTLE BROMLEY

Following a few morning services at St. Mary's Church earlier in the week, on Saturday the 4th April we held our Easter Vigil at 8pm.

Led by Canon Stephen Carter and assisted by Reverend Nicky Young at 8pm when the service began, we were led from darkness into light. Normally the service would begin outside around a fire, but although Gavin lit the fire, it was so windy that we stayed inside for the service. We were still able to use the fire to light the pascal candle which then enabled us to light up the church with lots of candles in our gleaming brass wear.

The service continued and was enjoyed by the 30 people who attended. Afterwards, everyone enjoyed the wine and refreshments supplied. The church looked lovely with the beautiful flowers

and we would like to thank all those who helped on the day, as well as all those who came.

We would like to announce two future events. The first is our **Social Afternoon on Saturday 6th June between 3pm and 5pm**. We will have tea, music and flowers. The second is an **Open Gardens** being held by Gavin on **Sunday 7th June, between 12 noon and 5pm at Erskine Road, Mistley**, to raise money for Little Bromley Churchyard.

We would love to see you at these events.

*Carol Cordwell,
Friend of Little Bromley Church*

ARDLEIGH & DISTRICT HORTICULTURAL SOCIETY

PLANT AND CAKE SALE

on Saturday 16th May, at
Ardleigh Village Hall

Station Road

Ardleigh CO7 7RS

From 9:30am - 11:30am

Lots of plants and cakes
for sale

CASH SALES ONLY

sorry no cards accepted



The Friends of St. Mary's Church, Little Bromley would like to invite you to our

Social Afternoon

Starting at 3pm until 5pm



At St Mary's Church, Little Bromley on
Saturday 6th June 2026

Meet some Friends, relax, listen to lovely music and
enjoy our free refreshments

Donations welcome

CO11 2PP

The Churches Conservation Trust is the national charity that protects historic churches at risk, we've saved over 360 unique buildings which attract more than 16 million visitors a year. With our help and your support, they are kept open, in use and free to all - living once again at the heart of their communities.

visitchurches.org.uk

The Churches Conservation Trust, 1 West Smithfield, London EC1A 9EE
Telephone: 020 7219 0560
Registered Charity No. 1066916 - 007 3000

ARDLEIGH SURGERY

Dear Parishioners,

Thank you for your continued support.

Practice Update – Change in Partnership Arrangements

We wish to inform patients that, with effect from 1 April 2026, The Colte Partnership has been formally dissolved.

Ardleigh Surgery will continue to operate as an independent GP practice under a newly constituted partnership comprising Dr Radrie Cole, Dr Philippa Outtridge, Dr Kelechi Anumnu, and Dr Michelle O'Carroll.

This change relates to the legal and organisational structure of the practice only. There is no change to the services provided, and patients will continue to receive care in the same way as previously. Access to appointments, prescriptions, and clinical services remains unchanged. All clinical and administrative staff remain in post, and the practice continues to operate in line with NHS contractual requirements and regulatory standards. Patients remain registered with Ardleigh Surgery, and no action is required.

We remain committed to delivering safe, effective, and high-quality care, and we thank our patients for their continued support.

Extended Access

Our extended access is currently based at The Mayflower Medical Centre in Harwich. We will be offering both face to face and telephone appointments within this service.

Patient Participation Group- PPG

Have your say! Would you like to have an input into the way your local GP Surgery operates? If so, we are currently seeking new members for our PPG. If you are a registered patient at

Ardleigh Surgery and interested in becoming a member, please visit the surgery for further information.

Over the next few months, we'll be running an **Empowerment Series** from **A to Z**, focusing on common health topics and how you can take charge of your own care.

M - Mental health support

With the ongoing pressures on GP services, the NHS has expanded the range of professionals available to help patients more efficiently. Patients experiencing mental health concerns are best supported by Mental Health Practitioners, who are specially trained to provide focused care. When you contact the surgery with mental health problem you will be booked in to speak to the mental health practitioner. At present these consultations are by telephone only.

- We can refer you to talking therapy, which you can also self-refer to.
- Self-referral portal: Google 'Therapy for You'.
- Therapists usually respond within 3 working days.

Locally there is the North East Essex Sanctuary which is open 1000hrs to 2300hrs every day. Patients can self-refer.

As GPs, our appointments are limited to 15 minutes and we are not mental health specialists, so we strongly recommend seeing a Mental Health Practitioner for a more tailored approach.

EWMHS for children up to the age of 17 years, again you can self refer by calling 0000000 (no on line) or email

Below are links and contact information

Kooth

Free anonymous online chat for young people to discuss their mental health issues- www.kooth.com

Samaritans

Samaritans offer a safe place for you to talk any time you like, in your own way – about whatever’s getting to you. You don’t have to be suicidal. Call Samaritans free, 24 hours a day, 365 days a year. **Telephone-** 116 123
Website- www.samaritans.org **Email-** jo@samaritans.org

Rethink Mental Illness

Rethink Mental Illness provide expert, accredited advice and information to everyone affected by mental health problems. **Telephone-** 0121 522 7007

Website- [Rethink Mental Illness](http://RethinkMentalIllness.org) **Email** - info@rethink.org.

Mind

Mind provide advice and support to empower anyone experiencing a mental health problem. They campaign to improve services, raise awareness and promote understanding. **Telephone** 0300 123 3393 **Website-** www.mind.org.uk

Practice shutdown- Next shutdown is Tuesday 19th May 2026

Thank you once again for your ongoing support and for being such a vital part of our community. We look forward to continuing to serve you in the months ahead.

Ardleigh Surgery

PLANNING DETERMINATION

REF	PROPOSAL	LOCATION	DECISION
<u>26/00344/</u> <u>AGRIC</u> Mr Matthew Robinson - K W Robinson	Application to determine if prior approved is required under Part 6, Class A of the Town and Country Planning (General Permitted Development) (England) Order 2015 (as amended) for erection of a machinery barn next to existing barn.	Badley Hall Farm, Badley Hall Road, Great Bromley	Determination prior approval not req'd 18.03.2026
<u>25/00656/</u> <u>OUT</u> Mrs Kathryn Ann Hayward	Outline Planning Application (all matters reserved) - Replacement dwelling with detached garage	Firtree Cottage Carringtons Road, Great Bromley	Approval - Outline 02.03.2026 Delegated Decision

PLANNING APPLICATIONS

REF	PROPOSAL	LOCATION
<u>25/01795/</u> <u>FUL</u>	Planning Application - Change of use from residential dwelling (Use Class C3) to a residential children’s home (Use Class C2) The Council’s comments remain as submitted on 7 January 2026.	Oak Lodge, Hall Road, Great Bromley

GREAT BROMLEY PARISH COUNCIL

www.greatbromleyparishcouncil.gov.uk

Clerk: Mrs Lizzie Ridout c1LCA

Email: clerk@greatbromleyparishcouncil.gov.uk



At our April Parish Council meeting, we received a presentation from City & Country regarding their emerging development proposal for ninety+ houses. It was good to see such strong representation from the village, with residents asking robust and thoughtful questions.

A date has now been set for the village litter pick: **Saturday 9th May at 8.30am**. We will be gathering at the Village Hall, where volunteers will be offered bacon rolls very kindly donated by the Plymouth Brethren. We expect to finish around 10am. Please put the date in your diary — it would be great to see as many people as possible.

Our District Councillor, Gary Scott, updated the Council on the changes to kerbside collections due to be rolled out over the next six months. The bottle banks in Church Meadow will be removed, as glass will soon be collected directly from your doorstep. We will share further information nearer the time, once we have confirmed start dates.

With the nicer weather and more people wanting to enjoy the countryside around the village, and with so many lovely footpaths to explore, I feel it is important to clarify what activities are permitted on each type of public right of way. A small minority have been misusing certain routes, so a reminder

may be helpful.

- **Footpaths** – walking, running, mobility scooters, powered wheelchairs
- **Bridleways** – walking, horse riding, bicycles, mobility scooters, powered wheelchairs
- **Restricted byways** – walking, horse riding, bicycles, non-mechanically propelled vehicles (mobility scooters and powered wheelchairs permitted)
- **Byways open to all traffic (BOAT)** – any kind of transport, including cars; also used by walkers, cyclists, horse riders and horse-drawn vehicles

(Gov.uk: Rights of Way and accessing land)

County Council elections will take place on Thursday 7th May. Residents are encouraged to vote either by postal vote or in person at Great Bromley Village Hall, which will be open as the local polling station from 7am to 10pm. Please remember to bring the required voter identification. For full details, please check the official guidance from Tendring District Council.

A reminder that our next meeting is on Wednesday 13th May at the Village Hall. This will be the Parish Assembly at 7pm, followed by the Annual Meeting. All are welcome to join.

Clr Andrew Fairley
Acting Chairman



Michael J Byles

Plumbing & Heating

Specialist in Oil Boiler
Installations, Maintenance
& Servicing - Oftec registered

General Plumbing & Heating work also undertaken

Tel: 01206 822225
Mobile: 07717 012433
Email@ michaeljbyles@aol.com

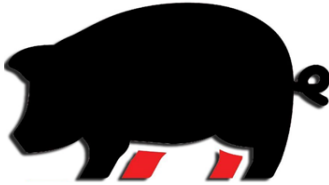
CLEANING

ARE YOU IN NEED OF HELP?
ON A FREQUENCY TO SUIT YOU.

IF YOU WOULD LIKE SOMEONE
RELIABLE *PROFESSIONAL* LOCAL
GIVE ME A CALL



JAYNE 07970674807



BECKY'S BUTCHERS

Family Run Butchers | Local Delivery Service | Quality Meat | Shop in store or online
07720833207 | beckysbutchers@gmail.com | beckysbutchers.co.uk

Badley Hall Farm, Great Bromley, Colchester, Essex, CO7 7UU

NEW OPENING HOURS

Visit our shop! Tuesday, Wednesday, Thursday, Friday and Saturday 9am -4pm

Local Beef, Lamb, Pork, Chicken and Game | Award Winning Sausages | Handmade Pies & Pasties
BBQ Meats | Frozen Fish | Eggs, Jams & Chutneys | Christmas Turkeys and much more...



A&S AGGREGATES LTD



Enquiries & Orders: 01206 230676

Email: sales@asaggregates.co.uk

Location: Butterfly Yard, Old Ipswich Road,
Colchester CO7 7QR

OPEN TO TRADE & PUBLIC

Supplying all grades of quality aggregates and ready mixed concrete,
for collection or delivery. Grab and muckaway services available.

Bulk order discounts available

Find us online: www.asaggregates.co.uk

Family run business supplying Essex and the surrounding area since 1990.

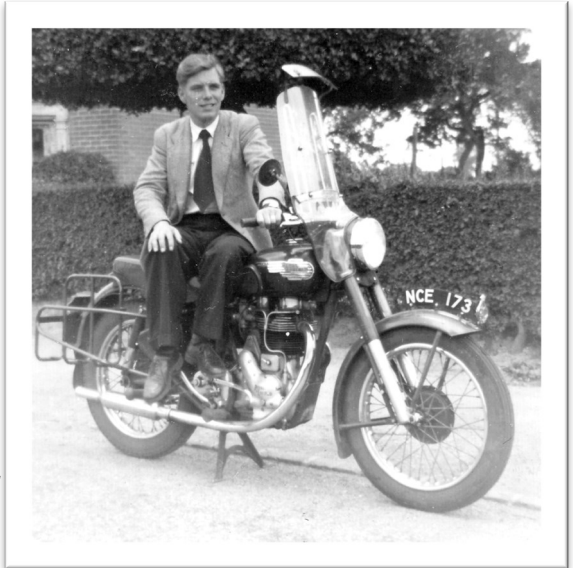
EDWARD BARRETT

14 OCTOBER 1931 - 26 FEBRUARY 2026

Edward was an evacuee from London in WW2 and came to Little Bromley to stay and later work with Spencer & Frostick at Hiskeys Farm on the corner of Spratts Lane. The older children Stephen, Sharon and Lynne attended Great Bromley school. The family lived for a time at Struts Farm and moved away in the 1970s. They remained in contact with the Frosticks and their great friends Beryl & Geoff Hurst. I can pass on any messages to the family.

HGF

hugh@greatbromley.org.uk



THE REVERENDS WILLIAM & ARTHUR GRAHAM (PART 3)

Arthur E Graham had several children with his first wife, Hannah. After her death, in 1892 he married Constance Hewitt, 20 years his junior, and together they had a daughter Barbara in July 1893, by which time Arthur was almost 59. There were no further children, and we assume little Barbara was lonely, as there were two newspaper adverts published, as follows:

9th November 1895 – Army & Navy Gazette: Charge of Little Girl

Mrs Arthur Graham wishes for the entire charge of little girl to bring up with her own (aged 3); every comfort; lady nurse; £100 a year – Great Bromley Rectory, Colchester.

[I believe her maths was a bit off, as Barbara was only 2 yrs 4 mths.]

We don't know the result of the search, but she later made a second attempt:

3rd December 1896 – Morning Post – LADY wishes for Little GIRL, 5 to 7, as COMPANION to her own child. Mrs Graham, Great Bromley Rectory.

The 1901 census shows the household as:



- Decking • Paving • Fencing • Turfing • Driveways • Patios •
 - Drainage • Concrete bases and groundworks •
- General garden maintenance • Equestrian fencing and ménages •
 - Tree and hedge maintenance •
 - Grass cutting contracts and ground maintenance •
 - Woodland maintenance •

✉ paul.cottagelandscapes@outlook.com
🌐 www.cottagelandscapes.co.uk
☎ 07775 670 497

Private garden, commercial or business premises, We can enhance your outdoor space.

Sparlings

Solicitors ... *we care*

An efficient
personal service
on your doorstep



Home visits
available on
request

13 High Street, Manningtree

Tel: 01206 392201
enquiries@sparlings.co.uk
www.sparlings.co.uk

Lexcel
Legal Practice Quality Mark
Law Society Accredited

Also at Colchester & Frinton-on-sea

- Arthur E Graham (Head, 66) b.1835 Great Bromley
- Constance F Graham (Wife, 47) b.1854 Highgate, Middlesex
- Helen Graham (Daughter, 24) b.1877 Great Bromley
- Barbara C Graham (Daughter, 7) b.1894 Great Bromley
- Phyllis Ponton (Boarder, 5) b.1896 Bombay, India
- Agnes E Jay (Governess, 37) b.1864 Foner-ton, Norfolk
- Annie Last (Servant, 20) b.1881 Laxfield, Suffolk
- Nellie L Moore (Servant, 13) b.1888 Great Bromley.

So here we have Phyllis, but younger than Barbara – so she does not match the advert, and we may be no closer to knowing how the situation arose. However, this does confirm that Phyllis did reside at the Rectory, and later mentions in the newspapers state that she was adopted, so had she been orphaned, her late parents being Harry and Phyllis Mary Ponton who had presumably been living in India?

Her great-granddaughter Zoe Couacaud sent me a picture.

This we believe to be Phyllis, Mrs C. Graham, Rev. A. Graham and Barbara in the Rectory garden. Reverend Graham had moved to Colchester by 1911 and died in late 1912. On 7th July 1916 Phyllis became engaged to Edward de Quincey Mears, son of the Rev. Mears of Little Bardfield. He was a 2nd Lieutenant of the Essex Regiment, aged 23, but by only July 25th his death in the trenches was announced. In 1919 Phyllis married Captain Humphrey Gardner, RAMC, in London, who was a Doctor after that war. It appears Barbara never married, as when she died she left everything to Phyllis. Zoe tells me that her mother and grandparents emigrated to Taupo in New Zealand, and great-grandmother Phyllis followed on and died there in 1966.



**Dr Hugh Frostick hugh@greatbromley.org.uk
07722 253962**

Dates for your diary



MAY

4	Bank Holiday	
9	Litter Pick, Great Bromley Village Hall	8.30am
13	Great Bromley Parish Council, Village Hall (Parish Assembly and Annual Meeting)	From 7:00pm
21	Little Bromley Parish Council, The Haywain (Parish Assembly and Annual Meeting)	From 7:00pm
25	Bank Holiday	
26	Great Bromley Village Hall AGM	7:00pm

JUNE

6	Social Afternoon, St Mary's Church, Little Bromley	3:00pm-5:00pm
7	Open Gardens, Erskine Road, Mistley	12:00pm-5:00pm
10	Great Bromley Parish Council, Village Hall	7:00pm
21	Open Gardens, Garage Sale and Scarecrow Festival	
26, 27 & 28	Flower Festival, St George's Church	

JULY

8	Great Bromley Parish Council, Village Hall	7:00pm
16	Little Bromley Parish Council, The Haywain	7:30pm

THE PRIORITY SERVICES REGISTER

If you are not aware of the Priority Services Register, this may be of interest to you or someone you know.

The Priority Services Register (PSR) is a free UK-wide service offering extra help during electricity, gas, or water supply interruptions.

You may be eligible if you or someone in your household relies on medical equipment, has a disability, long-term illness, dementia, mental health difficulties, refrigerated medicines, is of pensionable age, or has children under five.

Support during a power cut can include:

- A 24/7 priority contact number

- Text and voice alerts about local outages and severe weather
- Tailored support such as home visits, hot meals, welfare checks, and updates for family or friends
- In some cases, hotel accommodation and transport
- On-site community support with hot food, drinks, Wi-Fi, and charging points during major outages

To join the PSR, contact your local electricity network operator, gas distributor, and water supplier, as each runs its own register. You can find your providers using your postcode on the Energy Networks Association and Water UK websites, then apply online, by phone, or by post.

The Mobile Library visits every three weeks at Church Meadow on a Thursday - next dates are:

- 21 May
- 11 June
- 2 July

9.45am to 10.15am



Post Office & Community Library
The Great Bromley Cross Pub



Wednesdays
10.00am - 12 noon



Did you know? Our local area has three Automated External Defibrillators. You can access these at:

- The Courthouse, Harwich Road, CO7 7JG
- The Great Bromley Cross Pub, Ardleigh Road, CO7 7TL
- The Haywain, Bentley Road, CO11 2PL

Also at The Great Bromley Cross Pub is a Bleed Kit. The kit, provided by Great Bromley Parish Council, contains specialist equipment to help stem extreme blood loss before ambulance crews arrive.

Bleed control kits, also known as emergency trauma packs, are similar to first aid kits but include trauma dressings, gauze, chest seals and tourniquets to help stop serious bleeding. They can help victims of violent crime, those involved in road traffic accidents or workplace accidents, and could be particularly useful in rural areas where ambulance response times may be slower.

Don't ignore it - Report it at www.essexhighways.org



Essex Highways carry out regular inspections of roads and pavements, but issues may come up between these inspections. These could be potholes or other road surface issues, damaged street lights, street signs, overgrown trees, or issues with public rights of way.

Report maintenance issues online by using the highways reporting tool. If you think there's a risk to public safety please call 0345 603 7631 or if you have hearing problems you can use the text phone service on 0345 758 5592.

What is your future perfect?

- Business sale or growth?
- Reaching retirement or thinking about it?
- Saving for the future?

“ Whatever your future goals, I want to help you achieve your perfect future. Passionate about helping business owners and those approaching retirement, whether it's to achieve a dream or to create a better future for those you care about.

”



Tom Wood

Based in Little Bromley
FCA Regulated Financial Advisor

Castell Wealth Management Ltd is an Appointed Representative of and represents only St. James's Place Wealth Management plc (which is authorised and regulated by the Financial Conduct Authority).

**BOOK NOW A
NON-OBLIGATION
CONSULTATION**

☎ 0759 114 2373

☎ 0208 042 2995

✉ Tom.Wood@sjpgp.co.uk



CASTELL
WEALTH MANAGEMENT

Luxury

AFFORDABLE RESIDENTIAL CARE



MISTLEY MANOR

Independent or supported living for seniors

Specialist dementia care

Superb accommodation
for individuals and couples

Short term recuperative care, prior to
returning home

Respite and retreat packages

Stylish restaurant and bar

Hair and beauty salon

Landscaped gardens

Welcoming reception and lounge areas

PLEASE CALL OR VISIT US TODAY
TO FIND OUT MORE

01206 391488 • info@mistleymanor.com
mistleymanor.com

2 Long Road, Mistley, Manningtree, Essex CO11 2HN

MANNINGTREE & DISTRICT PHOTOGRAPHIC SOCIETY



By the time you read this, club members may have enjoyed an evening trip to Harwich (depending on the weather), a field trip to Weeley Hall Nature Reserve, and a prints competition (Seascapes and Landscapes).

In May we complete our programme for the 2025/26 year, before taking a break from the regular meet ups. Members will no doubt be taking lots of photographs during this break, developing their photographic skills, and bringing some of their pictures to next years competitions. Members may also be set a Summer Challenger, however at this point we don't know what this will be.

May Programme dates;

- Thursday 14th May – Images of the Year
- Saturday 16th May – Field Trip to Aldeburgh and Shingle Street
- Thursday 28th May – Annual General Meeting

Our club website has information about membership and activities together with competition results, photo albums and further club information. Our 2025/2026 programme is also on the website. Our public Manningtree Photographic Club Facebook page also features various club news and activities.

This month's featured image by Ian Parker was the winning image from our recent Open Colour Prints Competition.

We are a small group of photography enthusiasts with a wide range of photographic experience

and knowledge. The club aims to provide a friendly environment for members to enjoy the development of their photographic skills through a variety of activities in the company of like-minded individuals.

If you have an interest in photography, at whatever level, you would be most welcome at M&DPS. We meet at Mistley Village Hall, on the 2nd, 4th and 5th Thursdays of the month between September and May at 7.30pm.

For further information please contact our Secretary Pat Ainger on 01206 231242 or email: madps@post.com

Website: <https://e-voice.org.uk/manningtreeanddistrictphotographicsociety/>





Sole Solutions

MOBILE FOOT CARE



OUR SERVICES:

- Hard to cut toenails
- Thickened nails
- Callus or corns
- Hard skin removal
- Diabetic foot care
- Fungal infections



Call
Now

Ph: 07718 189 455

E: hello@solesolutions.online
www.solesolutions.online



Pattern Perfect Ltd.

Painting, Decorating & Property Maintenance

BOOK NOW FOR BIGGER DISCOUNTS

01206 251173

07876 030073

All interior and
exterior projects
large or small
repairs
makeovers
re-decoration
insurance work



Fully Insured

FREE Estimates

Affordable prices

Professional quality

Discounts for local people

**City & Guilds
Qualified**



www.patternperfect.co.uk

patternperfect@hotmail.com

3 Harwich Road, Great Bromley, Essex CO7 7UH

GREAT BROMLEY & DISTRICT CRICKET CLUB

Well, the new season is upon us once again, with the first game a home fixture on Saturday 18th April against Coggeshall Town starting at 12.30pm. The preparation up to this point has all been done. Mowers have been serviced and blades sharpened, the square cut, fertilized and re seeded. Work party organised to ensure club house has its spring clean, nets up, and the ground ready to welcome players and spectators alike. Winter net sessions and indoor matches hopefully have kept players sharp and outdoor training will begin in time for the new season too.

We are as always looking for new players, so whether you have played before and would like to now play for your local club or looking to pick up a bat and ball for the first time we would welcome you to our club. Playing various formats now with T20 games on a Wednesday evening, ladies soft ball, Saturday and Sunday 50 over games alongside ensuring we nurture the children (who are the life blood of our club) we have cricket from 5 years and upwards for both male and female of all abilities. At this point of writing the All-stars and Dynamos program for 5-11 year old boys and girls will hopefully start on Friday 1st May (weather dependant). Linked with the ECB we are currently waiting on this year's link for children to sign up. This link will be available on our website www.greatbromley.cricketclubwebsite.co.uk or email adamcuthbert1@live.co.uk to register your child's interest and he will then forward the link to you when received.

We are also looking to recruit ladies for our Softball team. It is still an up-and-

coming team, and we welcome anyone from 15 + to join. Whether you have never played before and fancy a go or if you played in the past, you are very welcome to join our training sessions. You can contact Tracey on 07941 803475 or Sophie 07738 832217 for more details. Don't be shy it's a very friendly and welcoming group.



In January, the Club held its AGM with most of the positions staying as they were, so Lynda Allam staying as club President, Clive Earley Chairman, Tracey Wareing Treasurer/membership Secretary Ed Fairley Club Captain, Jason Lloyd Sunday Captain, Adam Cuthbert Colts manager, Nick Holyman Fixture Secretary, Phoebe Prideaux Bar Manager and Tony Whitehead Welfare Officer. James Bees resigned from the position of Club Secretary and the whole club would like to thank him for all his efforts over the last few years, he remains on the committee as Social Secretary. The Club welcomed back Paul Bird as the incoming Secretary. Paul previously carried out this role several years ago and having taken early retirement was approached and without much persuasion agreed to take the role on once more. It's a hard-working committee who are eager for the community to be involved with the Club so whether you want to play, watch or just use the Club house bar, you are warmly invited. Where there is a home game there is a match to watch or a drink to be drunk. The club house will also be open every Friday evening from 1st May.

Home Games Coming up – start 1.00 pm – T 20 & Ladies 6pm

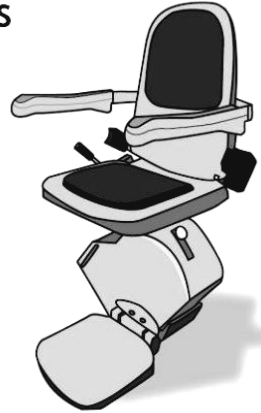
Essex Stairlifts Ltd

Your local stairlift specialist covering Essex and south Suffolk

- Straight Stairlifts • Curved Stairlifts
- Rental Stairlifts • New & Used
- Servicing & Repairs

For friendly, personal service telephone:

01206 231568



Email: sales@essexstairlifts.co.uk

www.essexstairlifts.co.uk

— The Great —
BROMLEY CROSS
REGULAR EVENTS

 **Every Tuesday and Friday:** <
Darts during the Darts Season
Cribbage Club 8pm every Tuesday

Every Wednesday: <
Coffee Shop, Library & Post Office 10am – 12pm
Local Councillor in attendance for help & advice

 **Every Thursday:** <
Fish & Chip Van 6:30pm – 8:30pm

Every Thursday: <
Fish & Chip Van 6:30pm – 8:30pm

Sunday: <
Pub Opens 12pm – 3pm

Every Thursday: <
Fish & Chip Van 6:30pm – 8:30pm

Saturday: <
Pub Opens 6:30pm – 11pm See website for events

Third Thursday of Every Month -
Friendship Club
Coffee, cake & a chat
2pm – 4pm

 **Quiz Night**
Tables of 6 at £3 per head
8pm – 11pm

May – 2nd, 6th (T20), 10th, 20th (T20), 23rd

Ladies 18th

June 7th 10th (T20) 21st 24th (T20) 27th

Ladies 8th 15th 22nd 29th

So please come and support the Club we look forward to welcoming you once again this season.

Tracey Wareing

Little Bentley Coffee & Cake

1st Wednesday of the month,
Church Hall, Little Bentley
10 - 12 Noon



Great and Little Bromley villagers
are very welcome

May 10th

The Deanery Choir will be singing at **St Georges Church, Great Bromley CO7 7TS** at the 11am communion service. The anthem will be 'None other Lamb' by William Jeater and arranged by Dan Forrest. William Jeater was a little known composer from Wandsworth, London and died in 1919. Dr. Dan Forrest (b. 1978) is widely recognized as one of the leading American choral composers of our time. He has been described as having "an undoubted gift for writing beautiful music...that is truly magical", with works hailed as "magnificent, very cleverly constructed sound sculpture" (*Classical Voice*), and "superb writing...full of spine-tingling moments" (*Salt Lake Tribune*). Dan's music spans a wide spectrum of genres and difficulty, ranging from extended major works for chorus and orchestra and significant concert choral repertoire to more accessible works for church and community choirs, as well as instrumental works ranging from wind ensemble pieces to solo instrumental sonatas.

May 31st

Some members of the Deanery Choir will be singing at **St Mary's Church, Frinton CO13 9BX** at the 6.30pm Festival Evensong service.

This service has become a regular feature in



Supporting Church music in the Tendring area

the Deanery calendar and will include major choral works for everyone to enjoy. All are welcome to this delightful choral feast!

Graham Bell
Deanery Choir
grahambell493@gmail.com



PRaise IN THE GARDEN

With Rt Rev Dr Gull, Bishop of Chelmsford
Music by the Colchester Salvation Army Band

Sunday 31st May 2026 @ 3pm
(gates open at 2pm)

Little Bentley Hall, Church Road,
Little Bentley, CO7 8SD.



Followed by tea and cake in the garden, and then everyone is free to visit these wonderful Gardens & Waterways which are considered one of the finest private gardens in East Anglia.

BOOK NOW FOR CATERING PURPOSES
nigel@garden-shows.com
07802-282193

Donations and Help on the day welcome (Home Baked donations must include the ingredients list for allergen purposes)

With thanks to our hosts
Christopher & Virginia
Palmer-Tomkinson



P.J. SAMPSON BUILDERS

**COMPLETE BUILDING
SERVICE**

30 Years' Experience

**Brick work Specialist
Painting & Decorating
Plastering and Carpentry
Plumbing & Electrics
Roofing**

All Property Maintenance

Tel: 01206 230619

66 Tile Barn Lane Lawford

STUART HARRIS

**HOME AND GARDEN
MAINTENANCE
BASED IN ARDLEIGH**

General handyman for practical jobs in both the home and garden including:

Carpentry inside and outside, repairs, painting and gutter clearing.

Gardening: grass cutting, clearing, planting, gate and post installation.

Insured with all tools, van and trailer.

**For more information
please ring: 07932 024693**

Email: harrisstuart816@gmail.com

GREENACRE BOARDING CATTERY

Over 30 years' experience

**CARRINGTON ROAD, GREAT BROMLEY
COLCHESTER (01206) 230436
www.greenacrecattery.co.uk**



***Leave your cat in our capable caring hands at
this long established cattery. Open all year round***

We offer:

- * Heated accommodation
- * Home comforts
- * Grooming during boarding
- * Individual diets readily available

VISA

MasterCard

EVERITT FAMILY RELATIVES

A recent visit to St Georges' graveyards by Roy Everitt from Kent was unsuccessful in a search for the graves of his great-grandparents Mark Everitt (1966-1909) and Ellen Jane nee Sadler (1864-1945) who had 10 surviving children. Roy's ancestors were farm labourers around the Bromleys & Ardleigh.

His grandmother Grace Winifred (pictured) had two sons out of wedlock; Edward was a tank driver who died in Italy 1945, and Denis was Roy's father.

Everitt (and Everett) is a fairly widespread name and has various connections in Great & Little Bromley within those big families of the time. For instance, Grace's sister Stella married William Cole, the brother of Arthur Cole (father of Vera Biddis). Sister Eva married George Jaggard while Matilda married Stanley Willsher and brother Claude married Grace Manning. The mother of one of our village Bobbys, Gerald Nicholls, was Alice Everitt but I have not connected the families, not with Matilda Everitt who married a Simons.

If anyone has information or pictures about the extended Everitt family they are willing to share, I can send them on to Roy.



Dr Hugh Frostick
hugh@greatbromley.org.uk
07722 253962

ADVERTISE HERE!

Great rates available

11 issues a year

**Change your advert as
often as you like**

Email:

the1986messenger@gmail.com

Great Bromley Open Gardens, Scarecrow Trail & Garage Sale

In aid of Great Bromley Village Hall

Sunday 21st June 12-6pm

If you would like to open your garden, create a scarecrow (all at sea theme), or take part in the village wide garage sale, please let us know by Friday 29th May so you can be added to the event map.

Text or call: Tracy
07485 164350



Specialists in Boiler Changes

- Central Heating Installations
- Alterations/System Upgrades/Radiators
- Boiler Servicing
- Landlord Safety Certificates
- Power Flushing
- Bathroom Suites/Showers
- Plumbing Maintenance

Tel: 01206 251434 or 07768 123006



ARDLEIGH CHIMNEY SWEEP SERVICES

- Traditional and Power Sweeping
- CCTV Inspections
- Safety Certificate Issued
- Fully Insured
- Cows Fitted



ANDREW SMITH

01206 231718
07845 249820



REGISTERED MEMBER
WWW.NATIONALCHIMNEYSWEEPS.COM

john hart

**PROPERTY
IMPROVEMENTS
AND
MAINTENANCE**



**FOR A NO
OBLIGATION
FREE QUOTE**

07887 920923

john@pondfields.org.uk

PROPERTY

kitchens
bathrooms
decorating
roofing
soffits & fascias

LANDSCAPING MINI DIGGER

WORK/HIRE
concrete bases
fencing
patios
decking

**FRIENDLY, HONEST
& RELIABLE
WITH MANY YEARS OF
EXPERIENCE**

**REFERENCES
AVAILABLE**

DALE GILLINGS PLUMBING HEATING & TILING SERVICES

***PROFESSIONAL, RELIABLE
SERVICE**

***CENTRAL HEATING
INSTALLATIONS**

***BATHROOM INSTALLATIONS**

***CERAMIC WALL & FLOOR
TILING**

***ALL WORK GUARANTEED**

***FREE ESTIMATES & ADVICE**

Telephone: Gt Bentley 250292

Mobile: 07976556986

CHURCH JOTTINGS

Easter 2026

St Georges celebrations began on Saturday 28th March when we welcomed a group of 28 wonderful people who were walking the Essex leg of the Pilgrim Cross. Visiting on their way places of worship to eat and stay on their way to Walsingham in Norfolk, arriving in time for the Good Friday on Friday 3rd April. We felt very honoured this year to welcome so many Pilgrims, a very happy group of people who called in for Morning Refreshments at St Georges, coffee, tea, cold drinks, hot cross buns and biscuits. Singing as they arrived along Badley Hall Road from Ardeigh. Later in Holy Week, St Georges Church was decorated beautifully by our regular Flower Ladies, Helping Hands, volunteers and our school children. The arrangements have been greatly admired and photographed. Thank you so very much. Thank you also to all who donated money to buy the Easter Lilies once again this year in memory of loved ones. As you can see from photographs they were stunning. Thank you Bodsworths, we had a wonderful Easter Sunday with fabulous

refreshments, beautiful music and "The Two Stephens."



Deans' NURSERY



Mill Farm,
Harwich Rd,
Gt Bromley
Essex
CO7 7JQ

01206 250485
www.millfarm.org
deans@millfarm.org



Grow Your Own A wide range of Vegetable Plants, Herbs, Soft Fruit & Fruit Trees.

Shrubs & Perennials Large selection of Shrubs and Perennials in 1L & 2L pots.

Bark & Topsoil Delivered in bulk or come in and bag your own. Try our Enriched Topsoil for fantastic results!

Compost The area's largest selection of bagged compost. Including Scotts Professional range. Also our own "Homebrew" Tub & Basket compost.

Also available Sleepers, Pots & Containers, Rock & Stone, Fertilizers, Bulbs & much more.

The biggest range of patio plants in the area, all grown on site. Looking for something different?

For all your growing needs



Opening Hours

Mon - Sat
9 - 5.30pm
Sunday
10 - 4pm



SUE'S GARDENING SERVICE

NEED A HAND GETTING YOUR GARDEN
READY FOR SUMMER?



I CAN HELP WITH WEEDING, PLANTING UP
CONTAINERS, MAINTENANCE OF BEDS & BORDERS,
WATERING OR FEEDING.

REGULAR OR SINGLE VISITS AVAILABLE

PLEASE CALL: **07808 098228**

B.A.S. ACCOUNTANTS

(Established 1989)

- Accountancy
- Audit
- Taxation
- Payroll
- Business Advice
- Free Initial Consultation

Call us on 01206 822514

Andrew Rutherford ACCA
No 1 The Courtyard, Tye Road,
Elmstead Market CO7 7BB

bas.accountants@btinternet.com

We specialise in looking after
the individual

Delivering Award Winning HGV/
LGV Driver Training in
Colchester Essex Since 1986
Category C1 (horsebox), C (up to
32 ton) and C+E (up to 44 ton)



You can follow us on our Facebook, Google or
Youtube pages

If you want more information please ring or
email info@essextransporttraining.co.uk
01376 562 407



GREAT BENTLEY DOCTORS' SURGERY

May Opening Hours

Due to the two Bank Holiday weekends in May, we will be closed on Monday, 4 May 2026 and Monday, 25 May 2026. NHS 111 can be contacted by patients if they are in need of urgent medical care on either of these Bank Holidays.

Appointments Not Attended

In March 2026 we had 153 appointments that were wasted because patients didn't contact the Surgery to let us know they were unable to attend their appointment.

We understand how frustrating it can be having to wait for a routine appointment, so if you aren't able to attend your appointment, please remember to contact the Surgery on telephone number 01206 250691 to cancel this. Alternatively, you can cancel this via the text reminder you receive for your appointment.

By cancelling your appointment, it will ensure that we are able to offer this to another patient and will not be wasted.

Hay Fever

Hay fever is a common allergy that causes sneezing, coughing and itchy eyes.

Symptoms of hay fever include:

- sneezing and coughing
- a runny or blocked nose
- itchy, red or watery eyes
- itchy throat, mouth, nose and ears
- loss of smell
- pain around the sides of your head and your forehead

- headache
- feeling tired

Symptoms are usually worse between late March and September, especially when it's warm, humid and windy. This is when the pollen count is at its highest.

Hay fever can last for weeks or months, unlike a cold, which usually goes away after 1 to 2 weeks.

If you need help with symptoms of hay fever, please contact your Pharmacy and ask to speak to a pharmacist about this. They will be able to give you advice and suggest the best treatments to help with symptoms, such as:

- antihistamine drops, tablets or nasal sprays
- steroid nasal sprays

Some antihistamines can make you very sleepy, so speak to your pharmacist about non-drowsy antihistamines if you need to.

Surgery Training Afternoon

Along with all other surgeries in the area we will be shut from 12.00 noon on Tuesday, 19 May 2026 for staff training. If you need urgent medical attention on this afternoon, please contact NHS 111.

Patient Participation Group Meetings

The next meeting of the PPG will be held on Thursday, 28 May 2026 at 6.30 pm in The Mitchell Room at Great Bentley Village Hall.

Sue Mitson
Operations Manager

Angus Dewar – Electrician

New Installations / Rewires

Extra Sockets and lights

PAT testing

Garage & Garden power and lighting

Landlord's inspections / LED lighting /

etc. etc.

NICEIC registered Domestic Installer

Tel: 01206 252432

Mobile: 07939 158683

Farm & Woodland Services

Bob`s logs and kindling

Open Fire/ Wood Burner

Barn Stored

Kindling also available

Telephone

Phone: 01206 391146

Mobile: 07733 326644

woodfuel
east 



RECTOR'S LETTER

Dear friends,

I have a confession to make: I love May! If it's not the signs of spring, the long weekends and the beginning of the wedding season, it's the warmer weather, the gentle humming in our villages as we all begin to relax and engage our neighbours on the street, in the pub or on a walk after hibernating for months on end.

But the backdrop to all these wonderful things seems somewhat darker this year. The number of conflict zones seems to be increasing, whether in the Middle East or on the eastern border of Europe. And then there's the domestic situation which seems to offer little hope, despite big promises made by our leaders.

Where do you go when things take a turn in life, moving from happiness and hope to darkness and despair? Do you turn inward and try to cultivate peace in your soul, whether through mindfulness, nutrition or meditation? Or do you look for an escape – somewhere you can 'switch off' and just enjoy some peace and quiet, whether a rural idyll or an unspoilt beach far away?

The backdrop to Jesus' ministry was beginning to darken as He faced up to the fact that He was going to be killed and began to share that with His first followers. When they were tempted to despair He encouraged them with these words: "I have told you these things, so that in Me you may have peace. In this world you will have trouble. But take heart! I have overcome the world." (John 16:33)

When we look around and the things that bring us happiness in this world seem to be diminishing, or when the backdrop to them threatens their peaceful enjoyment, we don't need to give in to despair or to lose hope. Jesus, through His death for our sins and His resurrection to restore us to a right relationship through faith in Him, has overcome the troubles that will inevitably come our way in this fallen world.

Come and join us at a service near you to hear more of this solid ground for hope in an increasingly fragile world. We look forward to welcoming you!

*Best wishes,
Phillip*

ST HELENA COMMUNITY BEREAVEMENT CAFÉ

Many people find that after the death of someone close, it can be hard to know where to turn or who to talk to. St Helena Hospice in Colchester runs a monthly **Community Bereavement Café**, offering a warm, friendly place for anyone who has been bereaved to come together for a cuppa, a chat, or simply the comfort of being around others who understand. The café is supported by trained staff and volunteers who offer understanding conversation and a compassionate listening ear.

The café is free to attend, open to

anyone who has experienced a loss, whether recently or many years ago. If you, or someone you know, might benefit from a relaxed space to connect with others, you would be very welcome. To book a place, or to refer someone who may find it helpful, please contact St Helena by phone or email or just show up on the day. Sometimes just knowing you're not alone can make the biggest difference.

Call or email: 01206 984274 / ces-coordinators@sthelena.org.uk



St George's Church, Great Bromley

For St George's contacts, information, or to receive our email newsletter, please visit www.greatbromley.org.uk or email us at church@greatbromley.org.uk

May 3rd	Easter 5	Parish Eucharist BCP with choir	11 am
May 10th	Rogation	Parish Eucharist with choir	11 am
May 14th	Ascension Day	- see website/poster	
May 17th	S/a Ascension	Evensong BCP with choir	6.30pm
May 24th	Pentecost	Parish Eucharist	11 am
May 31st	Trinity	Lt Bentley - see website/poster	
June 7th	Trinity 1	Parish Eucharist BCP with choir	11 am
June 14th	Trinity 2	Parish Eucharist with choir	11 am
June 21st	Trinity 3	Evensong BCP with choir	6.30pm
June 24th	Trinity 4	Flower Festival Songs of Praise	4.30pm

St Mary's Church, Little Bentley

May 3rd	Bluebell Service 3pm
May 17th	Holy Communion 11am
May 31st	Praise in the Garden 3pm
June 7th	Holy Communion 11am
June 21st	Morning Prayer 11am

Tendring and Dedham Parishes (TADP) - for the group bulletin and news see www.tendringdedhamparishes.org.uk

St George's Church, Great Bromley

RURAL MISSIONERS - HARWICH DEANERY

Rev'd John Saxon, The Rectory, Wix Road, Great Oakley, Harwich CO12 5BJ
harwichmjoh@gmail.com 01255 781859 or 07484 332734
Rev'd Phillip Young, The Vicarage, Dedham CO7 6DE
harwichrmp@gmail.com 01206 323919

CHURCHWARDENS

Mrs Jennifer Nicholls - Fryerning, Hall Road, Great Bromley CO7 7TS 01206 230688
Mrs Yvonne Cobbold (Assistant) 01206 230360
Mr Gregory Frostick 07806 828328

PCC SECRETARY

Mr Gregory Frostick 07806 828328

PCC TREASURER

Mr G Everington, Orchard House, Frating Road, Ardleigh CO7 7SU 01206 230956

CAPTAIN OF BELLS

Mr David Wenden - Girlings, Stone Road, Great Bromley CO7 7UR 01206 250260

PLEASE CONTACT the church office on 01206 322136 for Baptisms, Weddings and Funerals.

GROUP MEETING VENUES & TIMES

1st Ardleigh Beavers	Wednesday (<i>term time only</i>)	Village Hall, Ardleigh	6.00-7.00pm
1st Ardleigh Cubs	Tuesday (<i>term time only</i>)	Village Hall, Ardleigh	6.00-7.15pm
1st Ardleigh Scouts	Wednesday (<i>term time only</i>)	Village Hall, Ardleigh	7.15-9.00pm
Badminton Club	Monday	Village Hall	6.00-7.00pm
Bell Practice	Friday	St. George's Church	8.00pm
Carpet Bowls	Weds <i>except 1st Wed month</i>	Village Hall	7.30pm
Friendship Club	3rd Thursday in month	The Great Bromley Cross Pub	2.00-4.00pm
Iceni Choir	Monday	Village Hall	7.30-10.00pm
Parish Councils:			
Gt Bromley	2nd Weds in month (<i>normally</i>)	Village Hall	7.00pm
Lt Bromley	3rd Thursday in month "	The Haywain	7.30pm
Knit & Knatter	2nd Wednesday in month	Seven Rivers	2.00-4.00pm
Men's Club	Tuesday	Village Hall	7.00pm
Women's Institute	1st Wednesday in month	Village Hall	7.30pm

Sponsorship for The Messenger

Your village magazine relies upon sponsorship and advertisements to come to your doors free each month.

If you would like to sponsor an issue of The Messenger please contact Lizzie via email the1986messenger@gmail.com for further details.

All contributions for the magazine should be sent by the 14th of each month to the Editor:
Lizzie Ridout - 9 Johnson Road, St Osyth CO16 8PL
E-mail: the1986messenger@gmail.com
Published by Great Bromley Parish Council
Printed by Hot-Line Printers
Tel: 07761 093548
www.hotlineprinters.co.uk

BROMLEY MESSENGER – SPONSORS

THE GREAT BROMLEY CROSS PUB

info@greatbromleycross.co.uk
<http://greatbromleycross.pub>

GREAT BROMLEY PARISH COUNCIL



Parish Clerk: Lizzie Ridout
Email: clerk@greatbromleyparishcouncil.gov.uk
Web: www.greatbromleyparishcouncil.gov.uk

ESSEX STAIRLIFTS LTD

Brook House, Brook St, Great
Bromley CO7 7HX

Tel: 01206 231568

www.essexstairlifts.co.uk



LITTLE BROMLEY PARISH COUNCIL



Parish Clerk: Lizzie Ridout
Email: clerk@littlebromleyparishcouncil.gov.uk
Web: www.littlebromleyparishcouncil.gov.uk



St George's Church Great Bromley

www.greatbromley.org.uk
Parish of The Bromleys

HOT-LINE PRINTERS



24 Priors Way,
Coggeshall CO6 1TW

Tel/Fax: 07761 093548
Email: sales@hotlineprinters.co.uk
Web: www.hotlineprinters.co.uk

R. GWINNELL & SONS

Funeral Directors
24 High Street, Manningtree
Tel: 01255 861818
01206 391506
01206 868585

SEVEN RIVERS CHESHIRE



HOMES DISABILITY
Great Bromley, Colchester,
Essex CO7 7TR
Tel: 01206 230345
Fax: 01206 231011

TOM WOOD

Based in Little Bromley
FCA Regulated Financial Advisor



Get in touch
to arrange your
no-obligation
consultation.

M: 07591 142373
T: 0208 042 2995
E: Tom.Wood@sjpp.co.uk

LUCKY DRAW

SPONSORSHIP: If you would like to sponsor 1/3, 1/2 or 1 page on page 2 of The Messenger for the month of your choice please contact Lizzie Ridout on the1986messenger@gmail.com.

LUCKY DRAW: In July all advertisers and sponsors will be entered in a draw. The winner will get a free advertisement on the sponsor page size dependent on original advertisement.

PLEASE SUPPORT OUR SPONSORS

THE BROMLEYS ON THE WEB

www.greatbromley.org.uk and www.littlebromley.org.uk

