

The Messenger

The Magazine of the
villages of Great &
Little Bromley

April 2022



THE FIRST PAGE

Dear all,

Spring is just about here although today it's looked nothing like it outside. My white car is slowly turning orange with a layer of Saharan dust delivered by a fine rain! But the weekend is supposed to be mild and sunny. Perfect for washing my car I suppose.

Covid remains with us and over the last week or so, many people I know have tested positive. My daughter's secondary school has reverted to some home learning this week due to the amount of teachers who have been ill.

Jubilee celebrations are progressing well and there's a page detailing the events in Great Bromley in this edition. If you and your family are planning on attending, it would be really helpful if you could let me know, via clerk@gbpc.org.uk, so that we can coordinate the catering and not run out of essentials! I've put an order in for some fantastic weather too.

Following the felling of an oak tree in Church Meadow, despite the loss, there have been many positive comments about the improved view of St George's Church.

This month's cover is kindly provided by Paul. I know bluebells traditionally

flower in May but they are so pretty and I look forward to them every year.

Andy and Judy have some good gardening advice as ever in their column, and I'm looking forward to following some of it during the school holidays. It doesn't seem that long ago that it was half term but we are well over halfway through another school year, and those longer summer days are not too far away.

The children at St George's Primary have been busy and their learning looks so much fun, a couple of lovely photos are included.

Awareness days in April include:

- ◆ 4-10 - Community Garden Week
- ◆ 11-16 - Parkinson's Awareness Week
- ◆ 23rd - National Skipping Day
- ◆ 24th - Scream Day
- ◆ 26th - The London Marathon



Wishing you all a very Happy Easter.

*Take care,
Lizzie*

MATERIAL for the **MAY 2022** edition of 'The Messenger' should reach the Editor, Lizzie Ridout, by **14th APRIL 2022** please.

Contributions from anonymous sources will not be printed. Whilst the editor welcomes contributions, photographs etc. this is on the understanding that there is no obligation to publish, that the item may be edited and that there is no breach of copyright. Publication is in good faith and neither the editor nor the publisher accept any liability in respect of the content of any article, photo or advertisement, including any error or omission, responsibility for which remains with the author.

Copy can be delivered by hand, sent by post or e-mail (see inside back cover) or via the link on the websites www.greatbromley.org.uk or www.littlebromley.org.uk

For details of availability and costs for **ADVERTISING** in the 'The Messenger' please contact the Treasurer on 01206 230537

Please support the sponsors of our magazine.

IN THE GARDEN WITH ANDY & JUDY

For gardeners the BBC Essex weather forecast is useful as although daytime temperatures should slowly rise there might still be night frosts. Particular care needs to be taken if you are using an unheated greenhouse or moving seedlings or frost tender plants from a heated area to a non-heated area.

Tomatoes are very susceptible to the effects of cold weather. They will turn a blueish colour if they have been too cold and rarely make good plants once that has happened. In Spring as well as being mindful for cold nights you also need to ensure that greenhouses and cold frames are ventilated on a sunny day. Temperatures build up very quickly in sunny spells, particularly so in smaller greenhouses.

In April there is always plenty to do and you may have a backlog due to the rain in January which delayed the start of the gardening year. You may need to prioritise what you do. Ideally bare root trees, shrubs and hedging plants should already have been planted. If not get them done quickly and remember to water in well and also to water well until established. Roses should have been pruned and given a granular feed but again, it is not too late if you do it now.

Providing the soil is drying out and is not waterlogged you can get on with the majority of tasks. Andy recalls from his childhood that the local allotment was always busy on Easter weekend with many people digging and planting new potatoes. It appeared not to matter when Easter fell as presumably for many people it was the fact that you had a 4 day weekend and could make an impact on many gardening jobs. Generally early potatoes can be planted from early March with second

early and main crop left until late March or early April. This is a priority for us as we believe that there is nothing to match the flavour of home grown early potatoes. For all potatoes, be prepared to earth up and have fleece available for overnight frost protection once the haulms are above the ground.

Just as you are starting to clear the winter greens, such as sprouting broccoli, it is time to sow the seeds for next seasons crops. If you keep chickens they will not only eat the tops of the old plants, but if you split the stalks they will also eat the centre of them. The lawns will benefit from scarifying and aerating before applying a spring feed. Hardy annuals could have been sown outdoors from late March onwards and can of course be sown in April. If you started early sowing you should be resowing further saladings for continuity of supply later in the year. Fruit trees and bushes will benefit from a feed.

If you do very little sowing and buy in plug plants you will need warmed compost to avoid plunging tender roots into cold compost. Remember that peat based composts will soon be unavailable to amateur growers so we do need to get used to using peat free ones. However, peat free composts have slightly different characteristics and feedback from various sources suggest some can be easy to over or under water. For this reason we have decided to experiment with several different types on some of our plants this year. This way we hope to avoid any major failures as we get used to using the different materials.



GT BENTLEY DOCTORS' SURGERY

Easter Opening Hours

The normal Surgery opening times are from 8.00 am to 6.30 pm Monday to Friday. Over the Easter holiday the Surgery will be closed on Friday 15 April and Monday 18 April 2021.

Helping everyone to stay safe

We are still asking patients and staff to continue to wear masks in the Surgery. If you test positive for Covid-19 please do not come into the Surgery. If you do need to speak to someone at the Surgery then please contact us by telephone.

Covid-19 Vaccinations

For anyone still needing to book a Covid -19 vaccination this can be done by visiting the following:

www.sneevaccine.org.uk . All the relevant details you require can be found by clicking on the **Covid-19-Support Room** icon on the Great Bentley Surgery Website.

Hay Fever

Spring is in the air which means that it won't be long until the start of the hay fever season. For patients who are allergic to tree pollen they will normally be affected between March to mid-May

and for those with grass pollen allergy, between May and July. Please do not contact the Surgery for your hay fever medication as these are products that patients should purchase over the counter from the Pharmacy.

Missed Appointments

We have noticed a recent increase in the number of appointments not being attended. If you have an appointment booked that you find you are unable to keep, can you please contact the Surgery to let us know so that the appointment isn't wasted. To assist with this we have a dedicated appointment cancellation line on telephone no. 01206 255071 which you can call 24/7 to leave a message on with your name and details of the appointment.

Surgery Training Afternoon

Along with all other surgeries in the area we will be shut from 12 noon on Tuesday, 26 April 2021 for staff training.

Patient Participation Group Meetings

There will not be a PPG meeting in April. The next one will be held on Thursday 19 May 2022 at 6.30pm at Great Bentley Village Hall.

Sue Mitson – Operations Manager

FRIENDS OF ST. MARY'S CHURCH, LITTLE BROMLEY

The Friends of Little Bromley Church (in partnership with The Churches Conservation Trust) would like to invite you to a Social Afternoon on **Saturday 30th April from 3pm.**

Following a quiet time during Covid, we are pleased to begin hosting a few activities once more. Everyone is welcome to visit our beautiful church and listen to some lovely music, whilst enjoying our free refreshments.

Outside you may notice our two new benches in the churchyard which were recently donated by the Village Fund. You will also be able to see all the recent tree work (paid for by the last Bromley 10K Run) which has actually opened up the area and allowed extra light to filter in.

We hope that you will be able to join us at our first Friends event this year.

Carol Cordwell

GREAT BROMLEY PARISH COUNCIL

www.gbpc.org.uk

Clerk: Lizzie Ridout Email: clerk@gbpc.org.uk



At our recent Parish Council meeting in March we started with a one-minute silence to think of the situation and the people in Ukraine.

Councillors were provided with an update on plans for Hare Green playing area. A meeting is being arranged with the head of TDC's Public Realm regarding additional play equipment, benches and tables. Church Meadow will also be looked at regarding play equipment. Additional tree planting within the Parish was also discussed.

It was agreed to purchase bat boxes for Hare Green playing field and Church Meadow; we are awaiting further information from Essex Wildlife Trust.

A meeting has taken place with Essex Highways, ECC Cllr Carlo Guglielmi and myself regarding the long awaited speed limit reduction in Harwich Road. It is hoped that subject to costings and design work this scheme will be put in place in the next few weeks.

Councillors thanked Carlo for all his efforts and hard work in securing this speed reduction measure.

Great Bromley Jubilee Celebrations are progressing well. Our District Councillors Gary and Ann announced they had received funding from TDC to pay towards the beacon. They were both thanked for their support.

Residents who are attending the lighting of the beacon on Thursday 2nd June and the Hog Roast on Sunday 5th June are requested to contact our clerk by email at - clerk@gbpc.org.uk or myself at fyerning23@gmail.com or 01206 230688 in order to assist with catering arrangements. The council is

also looking at presenting Jubilee mugs to all children at St. George's School.

The council agreed to support St George's Church Flower Festival to be held in July this year, "Plant A Tree for the Jubilee."

Speed Watch volunteers have been out in the Parish during the past month.

The group is looking for additional volunteers; please contact our Clerk if you are interested in assisting with our Parish Speed Watch.

Cllr Fred Nicholls

Saturday 9 April at 7pm

St James's Church, Tower Road, Clacton-on-Sea CO15 1DA

Celebrating Her Majesty The Queen's Platinum Jubilee

Vivaldi Gloria in D

Handel – Let the Bright Seraphim

Handel – Coronation Anthem 'My Heart is Inditing'

Parry – I was Glad

Clacton Choral Society

Members of The Belmont Ensemble of London

Peter G Dyson – Conductor

Elizabeth Weisberg – Soprano

Lucy McAuley – Mezzo-Soprano

Book Online: www.clactonchoral.org.uk

Tickets: £12.50 – Also available from Roger Broomfield

Telephone: Mob. 07949127216

rogerbroomfield@hotmail.com

PLANNING DETERMINATIONS

REFERENCE	PROPOSAL	LOCATION	DECISION
21/02072/FULHH Michael & Tracey Elmes	Front porch	Westward House, Mary Lane North, Great Bromley CO7 7TZ	Approval - Full 10.02.2022 Delegated Decision
20/00547/OUT Daniel Rapson - Colchester Development Ltd	Hybrid Application for Outline application for residential development	Hamilton Lodge, Parsons Hill Great Bromley CO7 7JB	Approval - Outline 15.02.2022 Committee Decision

PLANNING APPLICATION

REF	PROPOSAL	LOCATION
22/00091/FUL Mr Lamb - Selectacars Ltd	Proposed new building for car valeting. Great Bromley Parish Council had no objection to the application.	Selecta Cars, Harwich Road, Great Bromley CO7 7JG

PLANNING APPEAL

REFERENCE	PROPOSAL	LOCATION	APPEAL REF
21/00445/FUL Mr Simpson – Lexden Homes (Colchester) Limited	Erection of a single bungalow and garage	Land On The West Side of St Georges Close Great Bromley	APP/P1560/W/21/328488 6



THE UNIVERSITY OF THE THIRD AGE

STOUR VALLEY U3A

Make the most of life once you're no longer in full time work and explore new ideas, skills and interests. Across the UK, u3a members are learning, staying active and having fun in later life. It's local, social, friendly, low-cost and open to all.

Monthly meetings and lectures are held in Constable Hall East Bergholt at 2pm on the second Wednesday of the month. On 9th March a lecture by Jim Stebbings on American Cultural Influences on post war Britain and on 13th April a lecture by Peter Jones on How to do Everything and be Happy.

Many interest groups are now active such as walking, garden visits, sports and dining. Emerging new groups include pickle ball and poetry and play reading. Regular quiz evenings are always popular.

Monthly coffee mornings in the Lambe School East Bergholt on the first Friday of the month from 10am until noon.

Please visit our website for more information and contact details u3asites.org.uk/stourvalley



SEVEN RIVERS CHESHIRE HOME

Hi Everyone,

So April has arrived and hopefully the nice weather starts, all new beginnings. Here at Seven Rivers we have a lot of new things happening, our Head of Care Nurse Pauline, plus one of our senior care staff, both left us in mid-March. At this time no replacements have been announced, so we are all eager to see who will be their replacements.

Unfortunately I was sick for St David's day so we could not make our Welsh Cakes this year. If you remember, last year we made some that turned out nice and tasty but a bit black around the edges. But I will be here for St Patricks day so we will be able to celebrate with our bunting and we hope to bake some soda bread. We baked this last year and it was a nice treat so it has been agreed that we will bake it again. We do have a few good cooks in the home and we try to cook once a month, depending on what trips are planned or

entertainment coming. As I am the activities person who bakes and I only work 16 hours my time is sometimes limited. Lee, the other activities worker, does not cook.

We have also been busy preparing for Easter, making Easter paper chains, pom-pom rabbits and ducks, plus decorating eggs to hang on our Easter tree. With so much happening within the home sometimes it's hard to remember what's been done and when. But it's nice just to be able to look forward to having a summer that we can go out and about again. We are hoping to visit Duxford War Museum, Colchester Zoo and Castle this year as our bigger trips out, plus trips around Brightlingsea Harbour and Harwich once the weather is more settled and warm. I am looking into horse riding as we have a couple of residents who would like to try.

I think that's about it for this month, so take care till next time.

Liz x

BROMLEY 10K 2022

We are pleased to say that the Bromley 10K Run will take place on Sunday 17th April and will begin at 9.30am. Due to the volume of runners this may increase the amount of traffic through Little Bromley for a few hours.

The run will start down Hilliards Road and will proceed through the village along back roads, eventually coming down Ardleigh Road and then along Shop Road, finishing in Paynes Lane.

There will be quite a lot of runners along Shop Road between 9.50am and 11am. We would like to apologise in

advance for any inconvenience caused.

We would like to thank all our local marshals for their help and expect it to be an enjoyable morning. Any support as the runners go past is always appreciated.

Carol Cordwell



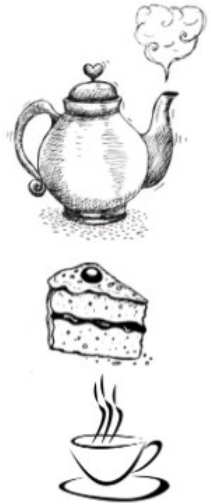
BRENDA & RICHARD INVITE YOU TO A
CHARITY COFFEE MORNING
IN AID OF ENGALYNX

SATURDAY 2ND APRIL 2022 10.30am-1.00pm

TETHER'S END, ARDLEIGH RD, GT BROMLEY CO7 7TL

*Coffee/tea, cake and a warm welcome –
entry free but...all donations gratefully
received. For further details of the charity,
please read the article below or contact us
on 01206 230537*

Looking forward to seeing you.



ENGALYNX

Founded in Manningtree in 1998 by Maralyn Bambridge, following a meeting with a newspaper photo-journalist who had visited the refugee camps in the DRC (then Zaire) following the 1994 Genocide. After several discussions it was agreed that she would try to do something to help the orphans and widows.

She met with some pupils of Manningtree High School, and they chose the name Engalynx which stands for England Links. For the first couple of years, these pupils were involved with fundraising events.

From the very beginning, the aim was to bring practical aid to vulnerable children. The aim is still the same. The charity has achieved many things, including building and equipping a maternity unit in Rwamagana District, training young women in tailoring and founding a co-operative to sell their goods, supplied over 400 goats to child headed families, Agreed trained hairdressers, always working with a

local contact or the local authority to ensure that what is being done is something that is really needed.

Working with the Executive Secretary of Rwamagana District (County Council) the charity is now funding a feeding programme for nursery pupils between the age of 2-6. This project is based in a truly poverty stricken area of Rwamagana and is based in the local school. The cost to feed one infant for one month is just £2.00 per week and we are looking for sponsors to help us continue this essential work. The meal is served at 10.00am and the number of infants registered for school has increased since 2019 from 90 children to 164. The benefits are two fold: more children are being educated and they are receiving a well balanced, nourishing meal each day.

For further information, please contact
Maralyn at:
maralyn.bambridge@yahoo.com

Registered Charity No. 1099700

ARDLEIGH & DISTRICT HORTICULTURAL SOCIETY

"Pelargoniums, their varieties and propagation" will be the subject of the talk by Brian Carline at Ardleigh Village Hall, Station Road, Ardleigh, CO7 7RS on Thursday 14th April at 7:45pm. Free admission to members, non-members £1.50. Everyone welcome.

GREAT BROMLEY FRIENDSHIP CLUB

Our March meeting was well attended at The Cross Inn and we were treated to a new layout of chairs and tables making it very comfortable and easy for us to discuss our plans for future meetings. After business had been taken care of we had delicious refreshments, and subs were collected for this year.

Fifteen pounds has been sent to the Messenger for their funds, and a

donation in memory of Vicky will be sent to charity of her choice.

The competition for next month is an item of costume jewellery ie a necklace.

We would be delighted to welcome new visitors to our meetings so please do come along on the third Thursday in the month at 2pm at the Cross Inn.

Sylvia



Join us for an
**Easter
Messy
Church**

All Welcome!

For more information please contact
Carol Cordwell: 01206 395103

No Charge but Donations welcome
Accompanying adults must stay but are also free



Learn the Easter Story through fun
crafts, puppets, an egg hunt and a
light lunch

on
Saturday 9th April
10.00am – 12.30pm,
At St. George's Church,
Great Bromley

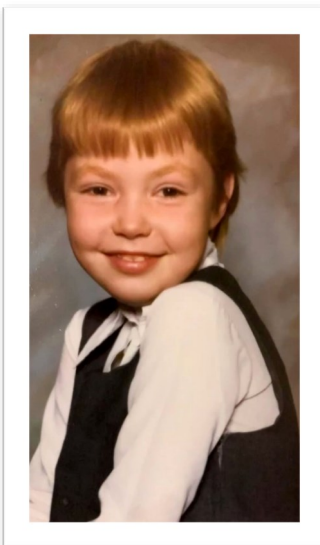


CATHERINE MARGARET CRAIG, NEE HART

10TH MAY 1972 - 19TH DECEMBER 2021

Catherine was born in 1972 and lived at Pondfields (formerly the kennels for the Essex Hunt) on Parson's Hill. She and brother John were brought up by her mother Mary, supported by Mary's mother, Granny Pirie. They had a pet sheep called Bubbles which used to wander in and out of the house.

Catherine went to St George's primary school and was also a member of the local Brownies. She enjoyed trampolining and gymnastics, and loved the times Mary took her swimming in the unheated pool at Hamilton Lodge. At the age of 11 she went to Hockerill Boarding School in Bishops Stortford, but she hated it and ran away! She finished her schooling at Manningtree School.



There are many stories about Cath and what she got up to with her cousin Julie, who she called "Sis". During Harvest, Julie and Catherine used to hide in the trailer that took the corn from the combine that Julie's Dad was driving. Before she was old enough to drive on the road she and Julie drove an old car around the fields and because there was straw about, the car would catch fire and they had to throw buckets of water over it to put it out. When Julie was old enough to drive she got a Triumph Spitfire, and Catherine and another friend would sit up on the back of the hood. Driving

home through the country lanes they would try and catch the tree branches and Julie was terrified the local bobby would catch them (but he never did!)

Cath loved her nights out, and the lady who lived in the next bungalow used to say that when she heard the gate go late at night, she knew it was Catherine coming home, and that the next morning she would probably find a pair of shoes in the mud!

On leaving school, Catherine went to work for the Post Office, at Butt Road in Colchester and then the main office in Head Street. From there she moved to Clacton where she held the branch manager's post. Her work moved to London where for some time she was a Mystery Shopper reporting back to head office, and more recently she looked after the Cross Inn Post Office back in Great Bromley. After she left

the post office she went in to Body and Healthcare, got involved in making jewellery and came up with some lovely creations, and worked at the Hythe Tesco while she was still able.

In her leisure time she enjoyed dancing, which was where she met Brian Craig. She also loved the music of George Michael. Brian recalls the times when they would board a plane at Stansted on a Saturday afternoon to go to a gig in Amsterdam, dance all night, and get the first flight back on the Sunday morning. It made them feel young again.

When Catherine met Brian, Mary was absolutely delighted and it was then that Catherine was at her happiest, and always had a smile on her face. They got married in 2016 firstly living in Colchester then moving to Walton-on-the-Naze where Catherine said, "All I want to do is walk along the promenade!" Sadly that was not to be for long, as three years ago she developed cancer and was in and out of hospital receiving chemotherapy. She showed great strength and bravery in dealing with her cancer, until she passed away in December, having been home for just three days.

Even when she was ill, Cath was always looking out for others. Whoever she met or happened to sit next to, she would talk to them and often make a new friend, and would always have time for them however ill she was feeling herself. She would get their numbers, call them to see how they were and arrange to meet up. Many of these people came to her funeral or posted lovely messages on Facebook.

Just one example was one time after her treatment she was waiting for Brian to pick her up, who was delayed behind an accident. She saw a woman who was terribly upset, and it turned out her relatives had been in the bad crash that had delayed Brian. Although Cath was felling awful herself, she stayed with the lady and when the ambulance arrived, made sure she found them in A&E. In fact Cath's caring manner of talking to people was so good that when she sought help at McMillan for herself, they actually asked her if she would consider being a counsellor to help other cancer patients.



Our thoughts and prayers go out to Brian who has lost the love of his life after a tragically short time together. Brian appreciated the support given to Catherine during her illness by her many friends, in particular her cousin Julie who spoke to her almost everyday on the phone offering her support, and cousin Emma, who was very supportive through her illness, who described her as determined, always up for a laugh and fiercely loyal. Brian is also very appreciative of everyone who assisted them in particular, Andrea, Rosalind, June and Claire who would come and sit with Catherine to give Brian a break.

Catherine is now free from pain, may she rest in peace.

*From eulogy by Uncle Bill Pirie, Brian
Craig and Julie Pirie
Dr Hugh Frostick*

Dates for your diary



APRIL

- 2 Lawford Church Quiz Night - Ogilvie Hall - 7.30pm
- 6 Coffee & Cake Church Hall, Little Bentley 10am - 12 Noon
- 7 WI - Susanne Daldry speaking about Courtcraft - Village Hall - 7.30pm
- 13 Great Bromley Parish Council, Village Hall - 7.30pm
- 14 Ardleigh & Dist. Horticultural Society, Ardleigh Village Hall - 7.45pm
- 15 John Stainer's Crucifixion - St Marys Church Lt Bentley - 6.30pm
- 17 Easter Day
- 17 Little Bromley 10K Run - 9.30am
- 23 St George's Day Sung Evensong - St George's Church - 3.30pm

MAY

- 2 May Day Bank Holiday
- 4 Coffee & Cake Church Hall, Little Bentley 10am - 12 Noon
- 4 WI - Maralyn Bambridge - 'My love affair with Rwanda' - Village Hall - 7.30pm
- 11 Great Bromley Parish Council, Village Hall - 7.00pm
- 17 Little Bromley Parish Council, The Haywain - 7.30pm
- 20 Gt Bromley Village Hall AGM - Village Hall - 2.30pm

JUNE

- 1 WI - Jubilee fish and chip supper with a shanty band - Village Hall - 7.30pm

Lawford Church Fun Quiz Night

Ogilvie Hall Lawford CO11 2JG

Saturday 2nd April 2022

Doors open 7pm, quiz starts at
7.30pm

£5 per person, max eight per
team

Bring your own drinks and
nibbles

Book your table or ask to
join a team

Contact by phone or text
07791 418388 or 07946 615470





HART PROPERTY

PROPERTY IMPROVEMENTS AND MAINTENANCE

PROPERTY

extensions
kitchens
bathrooms
decorating
roofing
soffits & fascias

LANDSCAPE GARDENING

fencing
patios
decking
ponds
post and rail
gardening
hedge trimming

AVAILABLE FOR HIRE WITH OPERATOR

mini digger
post puncher
augers
concrete breaker

FRIENDLY, HONEST AND RELIABLE WITH MANY YEARS OF EXPERIENCE

REFERENCES AVAILABLE

FOR A NO OBLIGATION FREE QUOTE

01206 231116

07887 920923

Info@hart.co.uk

Transform your walls with bespoke picture framing from **Frameworkerks**

Picture framing for the home, office or exhibition

- * Bespoke picture framing service
- * Giclee print and frame service
- * Preserving memories
- * 3D object framing
- * Hand finished frames
- * Paintings
- * Artwork for sale
- * 30 years + experience



www.frameworkerks.co.uk
01206 843813



10% discount
on your first order



Check out what our customers think on our social media sites



Unit D4 Seedbed & Business Centre,
Wyncolls Road, Colchester CO4 9HT



If anyone is in urgent need of the flood barrier or water snakes, these can be found in outside storage at The Courthouse, Harwich Road, Great Bromley.



Did you know? Great Bromley has two Automated External Defibrillators. You can access these at:

- The Cross Inn, Ardleigh Road, CO7 7TL or
- The Courthouse, Harwich Road, CO7 7JG

Don't ignore it - Report it at www.essexhighways.org



Essex Highways carry out regular inspections of roads and pavements, but issues may come up between these inspections. These could be potholes or other road surface issues, damaged street lights, street signs, overgrown trees, or issues with public rights of way.

Report maintenance issues online by using the highways reporting tool. If you think there's a risk to public safety please call 0345 603 7631 or if you have hearing problems you can use the text phone service on 0345 758 5592.



Great Bromley Parish Council

To celebrate Her Majesty's Platinum Jubilee, Great Bromley Parish Council is holding two events to which everyone in the village is invited.

Thursday 2nd June at 7.30pm

in St George's Church Meadow:

A BBQ, Piper and the lighting of our beacon

Sunday 5th June at 11am

A service at St George's Church led by Rev'd Stephen Carter and Canon Ann Easter, followed by a Hog Roast from 1pm and entertainment

Everyone is invited to attend either or both events

Donations will be made to Seven Rivers

Please email Clerk@gbpc.org.uk to confirm your attendance for catering purposes





GREAT BROMLEY ANTIQUES & COLLECTORS FAIR

Sundays 20th March, 22nd May, 25th Sept, 20th Nov and 22nd Jan 2023

9am – 3pm

Great Bromley Village Hall, Great Bromley, CO7 7JA

ENTRY - £1. (Before 9.30am £2) No Concessions

Hot Food and Drinks available

Email nigel@garden-shows.com 07802 282193

Table bookings only in advance

£25 each or 2 tables for £50

In these days of conspicuous consumption, we are being advised to buy less and make our purchases matter. Our speaker at the March meeting of the WI certainly brought these values to the fore. Kate Mason runs 'By Katy Mac' – an eco-fashion brand that sells upcycled and recycled clothing. Kate began sewing at the age of three as there was not too much spare cash for clothes when she was growing up in the 1970s. She designs new clothes sustainably – scouring charity shops for items she can repurpose and upcycle into new clothing. We saw coats made from tablecloths, skirts made from jeans with a tablecloth pelmet, and a wedding dress and bridesmaid dresses made from a king-sized duvet cover.

Kate never has an item in mind when she browses the charity shops. She picks items up if she thinks that they can be repurposed and gets inspired when she sees items together. She re-dyes lace that has yellowed and will alter clothing to make it fit better – she has even stored and altered 495 costumes for a children's ballet show and has made costumes for films and the Notting Hill carnival. She will also make steampunk costumes – and sported a fabulous outfit for her talk.

She believes that the current economic crisis, amongst other issues will cause huge supply chain issues and she resents buying clothes that were made in countries by factories that use a lot of water in the manufacturing process – whilst not having clean water for people to drink.

Kate reckons that all of us – with a little inspiration – can repurpose the

clothes that we no longer have any use for and encourages people to apply the 'make do and mend' principle. She runs mending workshops to encourage people not to throw something away because a button is missing – but to learn to mend clothes and save money. As our energy bills rise, and we have less to spend upcycling might give our wardrobes a much-needed boost.

Our next meeting will be held at Great Bromley Village Hall at 7.30pm on Wednesday 6th April. Our speaker will be Susan Daldry who will be talking about 'Courtcraft', sharing her experiences as a judge. Come along, meet some new friends from Great Bromley and beyond and enjoy a nice evening with cake and a cuppa.

Eileen Brown





ST. GEORGE'S (C OF E) SCHOOL, GT. BROMLEY

Telephone: 01206 230305

On Monday 28th February, Canon Stephen Carter and Jenny Nicholls joined us for Collective Worship. Canon Stephen told the children all about Lent, the period leading up to Easter, during which time Christians think about saying sorry for any wrongdoing. He also explained to the children that, during Lent, they will see lots of purple in church, including the vestments (robes) and the altar cloth.

Reuben and Leah lead the whole school in prayer and Matthew had the opportunity to try on the purple robes!

The children have been learning the Easter songs in classes and we are looking forward to our whole school Easter Service, which will take place at St George's church on Thursday 31st March at 2.00pm.

It is lovely to be able to welcome visitors into school again and we hope to see a lot more of both Stephen and Jennie in the months to come, including at our Easter Service.

On Thursday, we celebrated World Book Day. It was wonderful to see the children dressed as their favourite book characters and to hear them talk about their favourite books. Throughout the day, the children took part in lots of reading and book-based activities in class and also got together for shared reading with other classes. After so long spent in separate 'bubbles' it was lovely to see the children working, reading and learning together.

Becky Keitch



GREAT BROMLEY VILLAGE HALL

Refurbishment work at the village hall continues apace. The Management Committee is delighted with the replacement windows that have recently been fitted in the Small Hall and looks forward to the replacement of four further windows to the rear and the side of the building. Internal redecoration of the Small Hall is complete and new window blinds have been fitted. Other projects planned for this year include improvements to the car parks, external repairs and redecoration and installation of LED lighting throughout the building.

The Covid-19 restrictions at the village hall have been relaxed to reflect current HM Government policy and now comprise guidelines which are clearly displayed at the entrances to the building and on the notice boards. The wearing of a face covering in the building and hand sanitisation on entry/exit is still advised, but not mandatory. Usage of the village hall is now exceeding pre-Covid levels and the Management Committee are delighted to welcome back all of the existing regular hirers as well as several new ones.

The attention of the Management Committee is now turning towards the Village Hall AGM which this year will be held on Friday 20th May commencing at 2.30pm in the Millennium Lounge. All parishioners are welcome to attend the AGM which reports on the past year and looks forward to the next. This is your opportunity to provide feedback in person on the facilities in our village hall and the way it is organised and managed.

The AGM is also your opportunity to volunteer to assist with the

management of the village hall. There are currently three vacancies on the Management Committee and my colleagues and I would really welcome 'new blood' onto the committee to help with the running of the hall. No particular skills are required, however a desire to help our fine community facility to flourish and willingness to get stuck in and take on a non-onerous responsibility would make the role more meaningful and much more enjoyable. We have fun as committee members and are proud to be responsible for the village hall and its lovely grounds. If you are interested in joining us on the committee please contact me for further information.

The Management Committee would like to take this opportunity to wish you and your families a very Happy Easter.

Martin Frostick
Secretary
01206 250263

villagehallsecretary@greatbromley.org.uk

Little Bentley Coffee & Cake

1st Wednesday in month,
Church Hall, Little Bentley
10 - 12 Noon



Great and Little Bromley villagers
are very welcome

EVERY LITTLE HELPS

Appalled by the unfolding tragedy in Ukraine, I, like so many, wondered what I could do to help. The solution was resolved on Wednesday March 2nd when my daughter phoned to say that one of the hauliers that her company used was going to Poland with a 40 ton truck to deliver donated aid. A quick phone call to Roly Hollings, MD of A&R Haulage, to confirm what he required and by lunch time I had posted the list on Gt Bromley's WI WhatsApp group. As we were holding our monthly WI meeting in the Village Hall that evening I felt that it would be a good opportunity to talk about his proposed trip.

However, I was unprepared for the generosity and quick reaction of our members because as the meeting started in they came, laden with bags of beautiful handknitted items, tea, coffee, clothes, shoes, power-packs, toiletries, in fact so much so it filled my car. But this was just the beginning, Wendy Gallaher's daughter Sarah also put out a plea to the parents of children at Market Fields School and I asked my neighbours if they had any items. Suddenly, car-loads of bags started to arrive and Wendy and I began the task of sorting and boxing. I knew we had a deadline as Roly was leaving soon and he wanted all donations in by Monday 5th March.

We had by then so many bags and boxes that they filled two rooms of my house and Wendy's conservatory, and all thoughts of taking it by car to Risby near Bury St Edmunds evaporated. Luckily Wendy's daughter Clare owned a large van, which we packed on Sunday evening and off we set on Monday morning to deliver to the depot. On driving in we were surprised by the constant flow of

folk dropping-off donations and turning up to help. We spoke to Roly and presented him with a cake for the journey. He had made an appeal on Radio Suffolk for donations and as a result was overwhelmed by kindness and had collected enough donations to fill **four** 40-ton lorries. Sorting and packing all this into boxes to be loaded onto pallets was undertaken by a huge team of volunteers. Roly has been videoing all this and sharing it on his and the company's Facebook page.

The convoy of four lorries and eight drivers left Risby on Sunday lunch-time destined for a Red Cross depot on the Romanian-Moldavian border. As I type this on Monday 14th March they have reached Hengersberg in Germany.

If you feel that you would like to help with a cash donation they have a Just Giving page to buy products for refugees. Then go to A&R Haulage or Roly Hollings on FaceBook; also at GeeWizzCharity.com.

Merriel Gallifant





**ST MARY'S CHURCH
CHURCH ROAD
LITTLE BENTLEY
CO7 8SE**

**JOHN STAINER'S
CRUCIFIXION**

**Friday
15TH APRIL 2022**

6.30pm

**with
The Deanery Choir
and friends**

**Retiring collection for
Bell restoration fund**

**Tenor
Bass**

**Graham Bell
Peter Kenvyn Jones**

**Organist
Conductor**

**Rev Stephen Carter
Sally Pudney**

ST GEORGE'S CHURCH

Flower Festival update

The timetable for the weekend of July 1st, 2nd and 3rd 2022 is beginning to take shape. Friday morning 1st July we are very pleased to say the school is booked for a music morning to entertain parents and friends.

Nearly 100 letters have been delivered and posted asking members of our community if they would like to be involved, and/or sponsor some flowers, raffle tickets or provide a raffle prize. Just phone me if you would like to help. Our theme is "Plant a Tree for The Jubilee."

Helping Hands *First Saturday of the Month.*

St G's newly formed "Helping Hands" group met for the first time this year on March 5th at 10am. We meet whatever

the weather to tidy and help in the churchyard or inside the church. The rainclouds parted as a small working party arrived. Several ticks on the list as the compost area was tidied and levelled, Christmas Wreaths in black bags and much debris of fallen branches, twigs removed from the churchyard ready for the first grass cut. Hot coffee and freshly made sausage rolls were so welcome afterwards in the warmth of the church. Time for a chat. Thank you to our small band of helpers your help is appreciated. Our next meet, whatever the weather is Saturday April 2nd at 10am. Looking forward to seeing you.

Easter Lilies

The Easter Lilies are ordered! If you would like to sponsor a lily in memory of a loved one, please give your donation to Jenny 01206230688 or email jennicholls66@gmail.com.

Lawford Church
April 15th 10.00-12.00

'MESSY GOOD FRIDAY'
EXPLORE THE STORY OF HOLY WEEK
WITH CRAFTS, GAMES, FOOD,
WORSHIP.

SUITABLE FOR ALL AGES



Book a place for all the family at
office@lawfordchurch.co.uk

Ardleigh & District Horticultural Society

Evening meetings are the 2nd Wednesday of each month at Ardleigh Village Hall and start at 19:45.

Admission is free for members and just £1.50 for visitors, who are always welcome.

Refreshments are available after the talk. Membership is only £5 for each season and you can join at any meeting or at the show.

**Please ensure your oil tanks are
secure - thefts are on the rise**

**CALL YOUR
LOCAL
POLICE**



101

**IN AN
EMERGENCY
ALWAYS
CALL 999**

RECTOR'S LETTER ~ EASTER BUCKET LIST

Do you have something you yearn to do before it's too late? Perhaps visiting the Great Wall of China, or swimming with dolphins, or appearing in an episode of Neighbours? There's nothing wrong with wanting, and our wants shouldn't simply be rejected as 'selfish'. They are vital because God has created us not just with the capacity to want, but with an insatiable desire.

You may be wanting something of enormous importance; a new kidney, a place to live, a baby. Or your wants could be transitory pleasures which don't really satisfy the soul; because our souls are longing for something deeper, something eternal.

And that's where Easter comes in. Easter is all about eternal life, about life in all its fullness, both in this life on earth, and in the life after we die. Because Jesus, God's Son, died and rose from the dead three days later, and lives forever, we too can live His risen life. The love God has for each of us means that we can, if we choose, seek our true heart's desire, which is to live with him in eternity.

St George's Annual Meetings Sunday 3rd April

The Annual Meetings will be held in the church on 3rd April.

Election of Churchwardens at 11.45am and Annual Parochial Church Meeting at 11.50am (to receive the 2021 accounts and report, and elect the Parochial Church Council)

Edward Thomas's poem *And you, Helen* is about the gifts he might bestow on his daughter and includes the lines:

I would give you back yourself

And power to discriminate

What you want and want it not too late.

And there is an intimate connection between wanting and prayer; for prayer is a kind of wanting before God. Grant us, O God, the power to discriminate, to know what we want and want it not too late. Amen

This Easter, may we come to want the God of Life and Love and Peace and Joy. This beats even swimming with dolphins.

May Easter Blessings and Easter Joy be yours!

The Rev'd Laura Garnham

**St George's Church
Great Bromley**

Saturday 23rd April 2022

**St George's Day
Sung Evensong**

**at 3.30pm
followed by tea**

Preacher: Fr John Thackray

Free admission, all welcome.

www.greatbromley.org.uk



St George's Church Great Bromley



www.greatbromley.org.uk

Parish of The Bromleys

The Bromleys - April Services			
3rd	10.30am	Parish Eucharist (BCP)	Lent 5
7th	10.00am	Morning Prayer	
10th	10.30am	Procession & Eucharist	Palm Sunday
11,12,13th	10.00am	Morning Prayer at Lt Bromley	
12th	10.00am	Messy Church	
14th	7.30pm	Eucharist	Maundy Thursday
16th	8.00pm	Easter Vigil at Lt Bromley	Easter Eve
17th	10.30am	Parish Eucharist	Easter Day
23rd	3.30pm	Evensong (BCP) and tea	St George's Day
24th	10.30am	Parish Eucharist	2nd of Easter

Services at St Mary's Little Bentley

April 3rd Morning Prayer 10.30am
 April 15th Stainer Crucifixion 6.30pm
 April 17th Easter Communion 10.30am

Would you like to receive our email newsletter?

All our news and events are in the full-colour, monthly newsletter. You can subscribe on the 'Welcome Page' of the church website: www.greatbromley.org.uk

Services at St Mary's Lawford

April 3rd Holy Communion 10.30am
 April 10th Holy Communion (BCP) 8am
 Family Service 10.30am
 April 14th Holy Communion 7.30pm
 April 15th Children's Workshop 10am
 April 17th Easter Communion 10.30am
 April 24th Morning Worship 10.30am
 April 26th Holy Communion 9.45am

New to church or new to Great or Little Bromley?

Do get in touch for more information; we'd like to welcome you.

New servery at St George's

The PCC has agreed the outline of a new servery in the north aisle to provide a sink, cupboards and serving area for refreshments. A drawing will be available to view shortly in the church and further details will follow together with a consultation.