



WHO BENEFITS?

Services for May

1st	11.00am	The Eucharist	<i>St. Mary the Virgin</i>
3rd	7.00pm	The Eucharist	<i>St. George the Martyr</i>
4th	7.00pm	The Eucharist	<i>St. Mary the Virgin</i>
5th	11.00am	The Eucharist	<i>Seven Rivers</i>
6th	9.00am	The Eucharist & Rosary	<i>St. Mary the Virgin</i>
Sunday 7th			
	7.30am	Easter 4 Morning Prayer	<i>St. Mary the Virgin</i>
	8.00am	The Eucharist	<i>St. Mary the Virgin</i>
	10.30am	The Parish Eucharist	<i>St. George the Martyr</i>
	6.30pm	Evening Prayer & Sermon	<i>St. Mary the Virgin</i>
8th	9.00am	The Eucharist	<i>St. Mary the Virgin</i>
10th	6.00pm	Holy Communion	<i>Hamilton Lodge</i>
11th	7.00pm	The Eucharist	<i>St. Mary the Virgin</i>
12th	11.00am	Holy Communion	<i>Seven Rivers</i>
Sunday 14th			
	8.00am	Easter 5 The Eucharist	<i>St. Mary the Virgin</i>
	10.30am	The Parish Eucharist	<i>St. George the Martyr</i>
	6.30pm	Evening Prayer & Sermon	<i>St. Mary the Virgin</i>
17th	7.00pm	The Eucharist	<i>St. George the Martyr</i>
18th	7.00pm	The Eucharist	<i>St. George the Martyr</i>
19th	11.00am	The Eucharist	<i>Seven Rivers</i>
20th	9.00am	The Eucharist & Rosary	<i>St. Mary the Virgin</i>
Sunday 21st			
	7.30am	Easter 6 Morning Prayer	<i>St. George the Martyr</i>
	8.00am	The Eucharist	<i>St. George the Martyr</i>
	10.30am	The Parish Eucharist & Rogation Blessings	<i>St. Mary the Virgin</i>
	6.30pm	Evening Prayer & Sermon	<i>St. George the Martyr</i>
22nd	9.00am	The Eucharist	<i>St. Mary the Virgin</i>
24th	7.00pm	The Eucharist	<i>St. George the Martyr</i>
25th		Ascension Day The Parish Eucharist	<i>St. George the Martyr</i>
26th	11.00am	The Eucharist	<i>Seven Rivers</i>
27th	9.00am	S Augustine of Canterbury The Eucharist & Rosary	<i>St. Mary the Virgin</i>
Sunday 28th			
	7.30am	Easter 7 Morning Prayer	<i>St. Mary the Virgin</i>
	8.00am	The Eucharist	<i>St. Mary the Virgin</i>
	10.30am	The Parish Eucharist	<i>St. George the Martyr</i>
	6.30pm	Songs of Praise	<i>St. Mary the Virgin</i>
29th	12 noon	National Pilgrimage Mass	<i>Walsingham</i>
31st	7.00pm	The Parish Eucharist	<i>St. Mary the Virgin</i>

To have a post office in a community is considered a bonus and has a tick factor attached to it by estate agents for people moving into an area. The Post Office at The Cross opened when our Post Office/Stores in the centre of the village closed. It is open every morning and the helpfulness, efficiency and cheerfulness of the staff have already won them awards. We are fortunate to have such a place and yet its existence is threatened by moves from the Government who intend to end their support for the Post Office Card Account in 2010 thereby threatening the viability of thousands of post offices. Whilst the loss of the card may not be significant in an area where banks can be reached without difficulty it makes a serious impact on rural communities where there may be little in the way of public transport. A national petition has been started to try to halt the activities designed to kill off the account and there is a form to sign in the Post Office should you wish to support it.



We have had little rain in recent months. Some parts of the country are already faced with a hosepipe ban which some seem determined to flout, feeling it is their right to use water if they want to. Having a private water system makes one think twice about all water used and despair at the amount of water wasted everywhere. It is easy, with thought, to save water about the house, and gardens, if planted sympathetically with the local environment

in mind, will survive without extra water just as lawns will survive long periods of drought. The Anglian water site at www.anglianwater.co.uk is worth a visit for tips on how to respect and save water.

Some new garden 'pests' have recently been highlighted and, as usual the advice is to spray. Insects are the foundations for the food chain, benefiting both birds and plants which in turn support other animals, including man. Even man, unchecked, can prey upon fellow man and in this respect small communities can often suffer for what is intended to benefit the larger community. Ideas are sold on the basis of the benefit that they are said that they will bring even though there is a possibility that the smaller community may feel that it will be paying a price for

nothing in return. You will see elsewhere that revisions are under consideration to the Oasis scheme referred to in last month's Messenger and one does wonder if the benefits that it is said it will bring will in fact benefit the existing members of the communities that will be changed as a consequence should the scheme go ahead.

Leonie Henderson



HAMILTON LODGE TRUST

(Part of the Disabilities Trust)

Parsons Hill
Great Bromley
Colchester
Essex

A residential home for people with a Learning Disability is always on the look out for local people to support our residents as care staff or domestic cleaners.

Contact Ernie Curtis-Oram, The General Manager
on 01206 230298

PLEASE SUPPORT OUR SPONSORS

FROM THE PAST ...

LAND and A HOUSE IN LAWFORD

William Mannyng was a husbandman and in his will of 26th March, 1600, left his wife, Joan, a tenement and lands in Lawford called Whytinges for life on condition that she brought up his children "in the fear of God with sufficient meat, drink, appare!" and all they needed while they were minors. Four years after his death Joan was to pay his daughters, Joan, Ellen and Frances and the child she carried, if it was a daughter, ten pound apiece when they were twenty one, starting with the eldest and continuing until all were paid from the three pounds cash she had to put in bond each year with her father-in-law, John Wever of Layham.

When Joan died Whytinges was to be divided among the children but, if the expected child was a son, it was his but then he lost his ten pounds at twenty one.

Joan had everything else provided the family was looked after and was executrix.

Witnesses were Richard Gostling and Joane Thorne, Ralph King, Rector of Little Bromley, was the writer of the will. His lands and tenement in Lawford were surrendered to the Lord of the Manor of Lawford.

John Appleby



THE UNITED PARISHES OF ARDLEIGH AND THE BROMLEYS

The Rectory, Hall Road, Great Bromley, CO7 7TS



Dear Parishioner,
There are 1.6 million people living with HIV and AIDS in Ethiopia, and more than one million children who have lost their parents to AIDS.

Two Christian Aid partners, the Organisation for Social Services for AIDS (OSSA) and the Ethiopian Orthodox Church (EOC), are training young people in Ethiopian to be counsellors so that they can support people who have been affected by HIV and AIDS.

Friewion Aregaw is one of these young counsellors. She was shocked by the way people were treating an elderly lady in her community when they discovered she was living with HIV and AIDS.

She says: "This lady was abandoned. Everyone had left her and talked about her. I had no knowledge of HIV so I came to OSSA to ask them "What is this virus?"

OSSA started to teach Friewion about HIV and AIDS and gave her some counselling training. Because of what she learnt, Friewion went to visit the lady. "Everyday I passed her house," Friewion says. "I saw that it was closed and dirty. I knew that she was alone. I thought of that poor lady and it made me sad. This pushed me inside - even though I was frightened."

After some time the lady accepted Friewion's support and she now visits her every day. She also now counsels a number of children who have lost their parents because of AIDS, and runs awareness-raising workshops in the local prison.

Because of the support that Christian Aid has given OSSA and the EOC, young people such as Friewion are able to support people who suffer stigma and discrimination because of HIV and AIDS.

Through her work Friewion says, "I have realised that I can change lives. I felt so proud inside when I realised that I could do this."

You will have received an envelope with this magazine, please give generously to the appeal. You can return it to Mass, Chapel, Church or the Post Office. Thank you and may **God bless you**.

Fr Nicolas.



A. CLARKE
MEMORIALS
(Monumental Mason)

A caring & helpful service to create a memorial to your requirements
Also additional inscriptions & headstone cleaning service

Call for brochure or visit showroom
Home visits on request

Tel: 01206 761167 or 07879650980
Fax: 01206 541907

Unit 12
Gosbecks Business Park
Gosbecks Road, Colchester,
Essex CO2 9JS

GREAT BENTLEY FARMERS' MARKET



Wednesday 10th May
2pm - 4pm

FRESH LOCAL PRODUCE

GREAT BENTLEY VILLAGE HALL

For more details
Tel: 07879 846330





FISHER JONES GREENWOOD LLP

S O L I C I T O R S

PROBATE Services

At a time of bereavement our caring and supportive probate experts can help you through the difficult task of handling the estate of a loved one.

We also specialise in:

- Wills
- Inheritance tax planning
- Enduring powers of attorney

**For help and advice contact
Kate Wombwell on 01206 578282**

Norfolk House, 23 Southway, Colchester, CO2 7BA

www.fjg.co.uk

For all your gas requirements ...

CROSBY O'BRIEN

PLUMBING AND HEATING

BOTTLED GAS AVAILABLE

ALL CYLINDER SIZES AVAILABLE • EFFICIENT DELIVERY SERVICE
COMPETITIVE PRICES • CORGI REGISTERED LPG GAS ENGINEERS
LEADING BOTTLED GAS (LPG) SUPPLIERS AND INSTALLERS

***We can supply you with your bottled gas refills as well
as install and service your appliances for:-***

Industrial: Units • Farming / Factory • Commercial Catering • Mobile Catering Units

Domestic: Cooking & Heating • Outdoor Leisure • Mobile Homes
Caravans • Boats • Thames Barges

***We can also carry out Gas Safety Checks for Landlord Certificates
and should you require appliances such as:***

Cookers • Heaters • BBQs • Gas Hoses and Fitting • Regulators
Change Over Valves • Leisure Equipment
all this and more ...

Tel: 01206 230367 or Tel: 01245 381616



SURGERY NEWS

Great Bentley Surgery

Straight to the important bit this month with an up-date on our intrepid adventurer. Last time we heard from him, which was around 10th April, Dr Hunt was in Senegal, still safe and sound in spite of a few falls from his bike. He



says that the Saharan sand is very difficult to ride through – hence the falls – but it does provide a fairly soft landing. He also admitted that he is missing home. I think that means his wife and children rather than patients and colleagues at the surgery though. In time terms, he is now about half way through his trip, which doesn't seem possible. The time is going incredibly quickly.

The main news here at the surgery is that Dr Steiner has finally set a date for retirement. I suppose we had been anticipating it really, so it was no great surprise when he told us recently that he will finish at the end of February 2007. We are about to advertise for his replacement who ideally will be full-time and, like Dr Steiner, have a special interest in diabetes. He or she will also, we hope, be keen to get involved with training new GPs which will take the strain off Dr Hunt a little.

Talking of training, we have just heard that Dr Dewa, whom many people will remember, has now completed his and will very shortly be a fully-fledged GP. We don't know yet where he will be working but everyone here wishes him every success.

Last week, I was lucky enough to get a conducted tour of the new hospital and health centre at Harwich. It really is superb and seems huge. (The manager's office must be nearly as big as our waiting room!) One area which is particularly impressive is the maternity suite which is light, airy and very well equipped. It even has a room which is going to be kitted out with a birthing pool. I'm sure it will help to make child-birth in Tendring a very much pleasanter and less stressful experience.

On this subject, I'm not sure if all Mums-to-be realise that they can now make choices about their preferred antenatal care and eventual

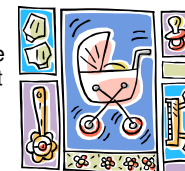
delivery options. From the start of pregnancy, ladies may choose to be looked after exclusively by the local midwives or by a GP, or they may opt for "shared-care" which means seeing a midwife and a GP alternately. Antenatal appointments can be here at the surgery or, when you are seeing a midwife, at one of the local hospitals. You may also choose where your baby is delivered (Harwich looks pretty good). When you come for your first antenatal appointment, please ask what options are available and you will be given full details.

Whilst most of us are now eagerly looking forward to warmer, sunnier days, for some people this means a thoroughly miserable time as the hay-fever season starts. If you are one of the unfortunate sufferers, but can't get to the surgery easily or don't want to bother a doctor, it's always worth trying your local pharmacist for help and advice. Many things that will help to relieve hay-fever symptoms are available without prescription and often for less than the cost of a prescription charge (£6.65 per item as of 1st April.) Hay-fever is just one of many things which pharmacists can help with, and they really are the experts on "over the counter" remedies, so it's often worth trying them first for simple problems rather than going straight to the doctor.

Staff at the Green Pharmacy have asked me to mention that they have recently started stocking a new range of aromatherapy products which are well worth a look (or a sniff!). They also mentioned that they are always willing to order items that they don't routinely keep in stock if you can't find what you need on their shelves, so please ask if you can't see what you want.

Finally for this month, congratulations to our long-serving (and long-suffering) Healthcare Assistant/Receptionist Nikki, who is getting married in the next few days to Andrew Hartley. They have sneaked off to St Lucia to do the deed which sounds very romantic. All of us here hope that they are having a wonderful time and wish them a very long and happy life together.

Hugh Cronin, Practice Manager



GREAT BROMLEY VILLAGE APPRAISAL AND PLAN

Great Bromley Parish Council intends to undertake a Village Appraisal during June and July 2006. This will provide a key input to the proposed Village Plan that is due to be produced in early 2007, once the outcome of the public enquiry into the Tendring District Replacement Local Plan is known. It is hoped the village plan will give residents, and others, a clear view of the way the village community has indicated it wishes to exist and also to develop in the future. It will also provide information for the Parish Council when prioritising projects, applying for grants, making investment decisions and representing the views of the community when responding to external organisations.

It is essential that the village plan represents a community consensus. Thus it is necessary to ascertain the views of residents on the wide range of issues to be included within the plan, primarily through a formal village appraisal. This appraisal will take the form of a comprehensive questionnaire, distributed to all households in the village. All responses received will be analysed and views/trends/problems identified which can be reflected in day-to-day parish council management and developed further within the village plan.

It is intended to distribute the appraisal questionnaire at the same time as the June edition of the Bromley Messenger. All completed questionnaires should be returned by the middle of July in the stamped addressed envelope provided.

Further information about the appraisal will be included in the June edition of the Bromley Messenger.

Access to Justice for People in Tendring

People living in the Tendring area who cannot afford legal advice can now access Legal Aid help from specialist lawyers, thanks to an innovative new outreach scheme set up by the leading Colchester solicitors Fisher Jones Greenwood LLP in conjunction with the Legal Services Commission.

The scheme, the first of its kind in Tendring, has been partly funded by a grant from the Legal Services Commission, to bring legal services to the areas of greatest need. It is especially aimed at those seeking advice on family law, including housing, employment, welfare benefits, Community Care and domestic violence. Fisher Jones Greenwood LLP can also offer advice in other publicly funded areas from their offices in Colchester.

Senior Partner at Fisher Jones Greenwood, Tony Fisher said "This is an important new service, particularly for those from disadvantaged groups. They will have access to free specialist legal advice on their doorstep. Numerous reports have highlighted the desperate need for this sort of service in Tendring and thanks to the support of the Legal Services Commission we are delighted to be able to provide it."

Jenny Welch, Community Legal Service Development Manager of the Legal Services Commission (LSC) said "We are delighted to have been able to fund this outreach scheme. The LSC is committed to helping some of the most vulnerable people in society and working in partnership with advice providers will go a long way to ensuring that they get the help they need."

The new service will operate from the Citizens Advice Bureau (CAB) offices in Carnarvon Road in Clacton on Monday and Friday mornings and Tuesday, Wednesday and Thursday afternoons. Although many clients will be referred through agencies such as the CAB, welfare organisations, NHS partnerships and local charitable organisations, anyone in need of advice will be able to make an appointment to see a solicitor.

Family Law specialist and solicitor Nigel Humphries, who is Project Manager for the scheme, said "This is a very significant development for people living in Tendring and we are very excited to be a part of such an important initiative."

The new office will be open from Monday 3rd October 2005. For further information please call Fisher Jones Greenwood LLP – telephone 01206 578282.

REPORT ANTI-SOCIAL BEHAVIOUR IN TENDRING

0845 605 2222



The line is open from 09:00 till 17:00, Monday to Thursday
(09:00 - 16.45 Friday)

An out of hours answer phone is available at all other times
You will receive feedback on your report within seven working days



Please note: This service is **NOT** an emergency service phone line

<http://www.tendringdc.gov.uk/CrimeAndDisorder>

Bromley Messenger - Statement of Accounts

	2005/2006	<u>Comments</u>
Income	£	
Donations	18.53	Another successful year, with another surplus, even though we increased the number of pages on several editions.
Advertisements	2201.50	Advertisers are still contacting me and apparently are getting reasonable response to their business offers.
Sponsorship	905.00	We still need more news items to keep your interest going, and with email it's so easy to send it to Leonie.
Total	3125.03	As Leonie said in her editorial we've been going 20 years since the Parish Council Newsletter – produced on a Roneo amalgamated with the Church Magazine, which was in financial trouble, and we've never looked back.
Expenditure		
Printing	2407.61	As usual thanks go to our sponsors, advertisers, copywriters, editor, proof-reader, deliverers and printer for their support.
Postage	29.40	
Expenses	60.38	
(deficit) /surplus	627.64	Any questions on the figures please contact me.
Total	3125.03	
<u>Bromley Messenger Reserve Fund</u>		
<u>31st March 2006</u>		
	£	
Balance as at 1 st April 2005	2731.73	
Surplus	627.64	
Balance as at 31 st March 2006	3359.37	
<i>Honorary Treasurer L.B.Christodoulides</i>		
<i>MBE</i>		

TENDRING OVER 60'S WEBSITE

The Tendring 60+ website

<http://www.60plustendring.co.uk/>
is being launched at the Town Hall Clacton 10.30 am Friday 31 March.
Practical sessions with lap tops followed by lunch.

If you would like to attend (or know somebody else who would) please telephone 01255 425692 for more information.



EASTERN WASTE DISPOSAL

"Local Company Looking
After Local People"



2 cu.yd - 14 cu.yd

15 cu.yd - 40 cu.yd



Aggregates
Delivered

"SUPER CHIP" NOW AVAILABLE!

Clean recycled wood. Ideal for pets, gardens or domestic fires

Tel: 01206 30 70 70

Fully Licenced Waste Transfer Station

info@ewdmail.co.uk

www.easternwastedisposal.com

PARISH COUNCIL NEWS

Great Bromley Parish Council

Report of the Great Bromley Parish
Council meeting held on 13 April 2006

Planning

The Council considered and agreed no objections to the following planning applications:

16 Bromley Road – two storey rear extension

'Junedene' Frating Road – amendments to approved scheme

5 Fairfield Close – two storey extension, garage conversion, new garage

'Wayside' Hall Road – garage conversion and porch

The Council considered but objected to the following planning applications:

'Old Court House' Harwich Road – removal of condition to allow use of dwelling independently of public house
Tendring District Council has made the following planning decisions:

Anglian Water - removal of sections of hedgerow along Hall Road, (approval)

13 Meadow Close - rear extension (approval)

Wilma Cottage, Frating Road – extension and garage (approval)

Elm Cottage, Harwich Road – replacement of existing building by two new bungalows, (application withdrawn)

Elmhurst, Harwich Road – replacement of existing house (refusal)

8 Spring Hill Close – new bungalow and garage (approval)

Tendring replacement local plan

There is an opportunity for residents to comment on proposals submitted by developers and individuals in response to the second draft plan. One of these proposals is the revised Oasis scheme.

Unfortunately time is short and comments must be submitted to Tendring District Council **by noon on 5 May**.

Further information and representation forms can be obtained from the district council's Weeley offices. References for relevant sites in Great Bromley are as follows: OM 13.4, OM 13.5, OM 13.6, OM 13.7, OM 13.8, OM 13.9 and OM 15.1.

Fly-tipping and litter

The council continues to press the district council to deal quickly and efficiently with the increasing problem of fly-tipping and litter on roads and verges. Residents are asked to report fly-tipping etc as soon as they notice it. If possible report the registration numbers of vehicles used by miscreants. The relevant telephone numbers (all 01255) are: Flytipping – 686768; roadside litter – 686788; abandoned vehicles – 686799. Reports can also be emailed to wcrusader@tendringdc.gov.uk.

The village's roads and verges are cleaned and 'litter-picked' by Onyx monthly - or quarterly for country lanes. If Onyx's visits are less frequent than this then report the matter to the district council on 01255 686766.

The parish council is installing a further dog bin at Burnt Heath.

Great Bromley Annual Parish Assembly

The Annual Great Bromley Parish Assembly will be held at the Village Hall at 7.30 pm on Thursday 11 May 2006.

The Chairman and other council officers will report on the parish council's activities during the past 12 months.

There will then be an opportunity to raise matters of concern to residents, ask questions of the council and also make suggestions. *All residents are invited to attend.*

The Council's own annual meeting will be held at 7.00 pm on 11 May.



The Dog House
Burnt Heath House
Frating Road
Ardleigh
Colchester
CO7 7SY

The Dog House Grooming Service Call Jo on:
01206 230101
07759 550587

For bathing, clipping and trimming to just brushing out!

Michael J Byles

Plumbing & Heating

Specialist in Oil Boiler
Installations, Maintenance
& Servicing - Oftec registered

General Plumbing & Heating work also undertaken

Tel: 01206 822225
Mobile: 07717 012433
Email@ michaeljbyles@aol.com



**P.J.
SAMPSON**



BUILDERS
COMPLETE BUILDING SERVICE
Over 17 Years' Experience

Free Estimates Tel: 01206 230619

Lightplan

Decorative Lighting Specialists



New Stylish Showroom
Open To Trade & Public

Unit 1, 30 Oxford Road, Clacton-on-Sea
Tel: 01255 422330

On presentation of this advert 5% discount will apply

G & K TREE SERVICES

Specialist in all types of Tree Work
inc. Surgery, Felling, Reshaping, Stumpgrinding
Also all hedge Maintenance Fully insured
Free Estimates

Also Small or Large loads of Logs
Bark, Mulch, Woodchips
Friendly Reliable Service
Open 7 days a week

Tel: (01206) 231306 or (07866) 251221

S P CONTRACTS

GENERAL BUILDER & HARD LANDSCAPER

TEL: 01206 231866 (Eves)
MOBILE: 07976 264162

*Specialists in ground work, drainage, general
building & home improvement*

*with over 20 years' experience examples of the services
we offer are:*

*Patios - slab or block paving, shed/greenhouse bases
and building erection, garden walls and fencing, paths,
driveways and general drainage including guttering.*

*Conservatories, porches, extensions and garage
conversions*

*Internal renovation: moving doors or windows,
bricking up or recovering fireplaces, levelling floors or
putting in ramps.*

We are honest and reliable, friendly and affordable.

*We give free estimates and have Product & Public
Liability Insurance*



Crosby O'Brien
Plumbing & Heating Ltd



LPG Peartree Farm, Spring Lane, 197393
Hatfield Peverel,
Essex CM3 2JW

t: 01206 230367 or 01245 381616

f: 01245 382636

e: sales@cobs-heating.co.uk

*Crosby O'Brien are a Corgi registered
company with over 30 years' Experience in
all aspects of Heating and Plumbing*

- Central Heating
- Boiler Installations
- Bathroom Plumbing and Furnishing
- Including Flooring and Disabled Modification
- We have particular expertise when working with either mains or bottled gas

ELY'S TURF & TOPSOIL

Suppliers & Growers of Fine Quality
Turf

Also - Full laying service
Free quotation

For a prompt free reliable delivery service

Tel: 01206 231306



BLINDS

INSTALLED INTO YOUR HOME

- Fast local service
- Free measure & Fit
- Roman/Wooden now in
- Call 9am - 9pm (7 days)

Buy any three blinds
and get an
**EXTRA ONE
FREE**

Or
**BUY ANY TWO
from £129**

- Verticals
- Venetians
- Rollers
- Washables

Harmony Window Fashions

0800 585364 or 01255 434847



Primrose Pork

Free Range Pigs Outdoor Reared

Sausages

- | | |
|--|----------------|
| Traditional | Pork & Apple |
| Toulouse | Pork & Stilton |
| Lincolnshire | Chipolatas |
| Sausage Meat - Pork & Apple Burgers | |
| Loin chops - Dry Cured Smoked Back Bacon | |
| Dry Cured Smoked Streaky Bacon | |
| Smoked Gammon Steaks | |
| Smoked Gammon Joints | |

All meat sold Frozen

Fed on Non-Genetically modified food. All pork reared to High welfare Standards. Pigs spend their life outdoors growing naturally leading to tender succulent pork.

Farmer Robert Moss
Moverons Farm, Ford Lane, Brightlingsea, Essex.
Please ring to enquire 01206 303956
Orders taken or ring to visit

The **MOBILE CARPET & FLOOR COVERING SHOWROOM**

Tel: 01255 830793
Mobile: 07711 745107

Chiltern Farm • Crown Lane
Tendring • Essex CO16 0BH

The Carpet Store that comes to your door

QUALITY CARPETS, VINYL & LAMINATED FLOORING

Choose from over 2,000 carpet and flooring samples in the comfort of your own home.

We will provide you with:

- ◆ Expert free fitting;
- ◆ Free estimates;
- ◆ Free insurance quotes;
- ◆ Furniture removing for those who can't manage
- ◆ Prompt friendly services;

Daytime or evening appointments available - Distance no object

GREENACRE BOARDING CATTERY

Over 30 years' experience

CARRINGTON ROAD, GREAT BROMLEY
COLCHESTER (01206) 230436
www.greenacrecattery.co.uk

Leave your cat in experienced capable caring hands at this long established cattery which is open all year



We offer:

- * Heated accommodation
- * Home comforts
- * Grooming during boarding
- * Individual diets readily available

GREAT BROMLEY VILLAGE HALL CHARITY TRUSTEES

The Village Hall committee met on 7th March with 11 members present. They are scheduled to meet again on 25th April.

The electrical system at the Village Hall has been fully tested, as required by the authorities, and found to be in a satisfactory state. Also, the portable electrical appliances and the Fire equipment has been checked and certified.



The curtains at the Hall have been fireproofed. However, we cannot allow large drapes of material to be temporarily hung from the walls/ceilings for functions as this constitutes a significant fire risk especially should you have lighted candles on the tables and contravenes our Premises Licence.

A word of warning for those of you who have precious central heating oil in tanks or expensive diesel stored in the open, both the village hall and the church during March/April have had persons, so far unknown, interfere with their supplies causing damage and loss of oil.

A very big thank you to all the supporters, helpers and organizers of the "Nostalgia" dance held on 18th March at the hall. A splendid evening was enjoyed, raising £637.60 for the village hall funds.

Not to be missed dates for your diary are:

The Annual General Meeting of the Great Bromley Village Hall will be held on Wednesday, 10th May commencing at 8.00pm in the village hall. Members of the public are most welcome to attend. Why not come along and see for yourselves what the committee do to keep the hall open for your use.

Saturday, 15th July, 10.30am till 2.00pm, a Coffee Morning at "The Pippins" by the kind invitation of Peter and June Wenden.



Saturday, 7th October, 7.30pm till 11.45pm, Supper, Cabaret featuring the Cavender Singers (a group of ladies from the Clacton-on-Sea area), Bar, Raffle and a Guest Speaker. Contact Frederick Nicholls on 01206 230688 for details and ticket.

The Christmas Fayre will be held on Saturday, 18th November, 11.00am till 2.00pm at the village hall. The money raised this year will be divided equally between the Women's Institute and the Village Hall.

Bevan Willgress

MATERIAL for the **JUNE 2006** edition of 'The Messenger' should reach the Editor, Leonie Henderson, by **MONDAY, 15th May, 2006** please. Contributions from anonymous sources will not be printed. Copy can either be delivered by hand or sent by post, fax or e-mail. (see inside front cover for details)

Please support the sponsors of our magazine.

Get Your Lawn Mower Ready For The Growing Season



at
Richard Kimberley Services
**ALL PEDESTRIAN,
 ROTARY AND RIDE-ON MOWERS**



Engineering workshop established over 20 years. Our regular customers come back year after year to have their lawnmowers serviced and repaired.

Why don't you come to us too?

PROVEN WORKMANSHIP

COMPETITIVE PRICING AND WE DON'T MAKE YOU WAIT!

(Collection and Delivery by Arrangement)

Specialists in the welding of aluminium, stainless, steel, magnesium and cast iron

Tel: 01206 230964 Hungerdown Lane, Lawford, Manningtree.

SAUKA

GROUNDWORKS & PLANT HIRE

FREE ESTIMATES

ALL TYPES OF GROUNDWORKS & LANDSCAPING UNDERTAKEN

PATIOS TARMACING SLABBING CONCRETING
 BLOCK PAVED DRIVEWAYS TURFING FENCING
 GARDEN WALLS FOOTINGS CONSERVATORY BASES
 ESTENSIONS DIGGER & PLANT HIRE

STEPHEN SAUKA

Dakas House
 Shop Road
 Little Bromley
 Essex CO11 2PX
 8



Pleass Thomson & Company Solicitors

Rosemary Chambers,
 91-93 Rosemary Road West,
 Clacton-on-Sea,
 Essex CO15 1EP

Tel: (01255)221133
 Fax: (01255 220055



Miss Jane Pleass, B.A.

Female Painters & Decorators

All Interior & Exterior Work
 10 years experience
 Reliable & Tidy
 Free quotations, colour & design advice
 Eco friendly, non-toxic paints available

Contact: Sara
 Tel: 01206 255226 Mob: 07817 258846

R. J. SEXTON LTD.

PROFESSIONAL PAINTING, DECORATING & BUILDING SERVICES

- Over 30 Years Experience
- Interior & Exterior Decorating to Suit Your Requirements
- Bricklaying, Carpentry, Plastering and all types of Masonry Work Undertaken
- Reliable Service Within a 15 mile Radius of the Colchester Area
- Free Estimates and Consultancy Given
- References Available on Request
- I am a Christian workman

Tel: 01206 861857 to Obtain a Free Quotation
 Registered in England. No. 04641293



PLANT Services Ltd



Pat Swanston
 Mobile: 07774516932

Onsite construction and agricultural servicing and repairs

The Thatched Cottage, Brook Street, Great Bromley, Essex, Co7 7HX
 Telephone 01206 230977

Lisa Anderson MIGHT

VTCT Swedish Massage Therapist
 Therapeutic and Holistic Therapy

Massage is a gentle and effective way of helping the body to heal itself

Take care of yourself

At: The Nurses Room, Great Bentley Pharmacy
 Great Bentley AND also mobile

Phone: 07788 977518



M. F. B. GARDEN MAINTENANCE

THE PERSONAL TOUCH FOR YOUR GARDEN

For My Personal Attention
 To Your Garden Needs
 Call Malcolm on:
 01206 851866 or 07752991857



"OLD COURTHOUSE INN"

Harwich Road • Great Bromley • Colchester
 Tel: 01206 250322

www.theoldcourthouseinn.co.uk

Four ♦♦♦♦
 Tourist Board
 Recommended
**BED &
 BREAKFAST**

BED & BREAKFAST • 10 EN-SUITE ROOMS

Large Bar Restaurant & Bar Menus
 Specialising in Fresh Fish, Steaks, Home-Made Dishes, Vegetarian Dishes

Thursday is Curry Night plus full menu
 Sunday we serve a choice of roasts plus the full menu is available
 We serve food until 10.00pm every evening
 Sunday until 9.30pm

OPEN ALL DAY

Breakfast, Morning Coffee, Lunch, Afternoon Cream Teas & Evening Meals
 We have our full menu available all day



Sunbright

Roofing Specialists Approved uPVC installers

Quality roof repairs new and old, flat and tiled
Chimneys and repointing work
Approved uPVC installers of fascia, soffits and guttering
Also dry verge systems which prevent
strong winds blowing off tiles, entry of rain,
birds and large insects
10 year guarantee
Free estimates and professional advice
25% discount available

Tel: 01206 391345 Mobile: 07789 823712

TOPMARX TRAVEL

*24 Hour Reliable Service
For all occasions*



*Airports - Seaports
Shopping - Nights out
Competitive rates*

Call Mark: 01206 395449
07860 197275



WOMEN'S INSTITUTE

Fire Officer Kevin Mossup came along to our April meeting to give a talk on 'Safety in the Home'. He told us of a new Government Scheme which has recently come into practice, where a Fire Officer can come and visit people in their home, have a look round and offer advice on how fire safety can be improved.



They can provide you with two fire alarms free of charge, including two 10-year guaranteed batteries and fit them for you. Fire Officer Mossup said that around one thousand alarms have been fitted already in this area. He advised to dust them frequently, preferably monthly, but not to turn them off to do it.

It is best to keep bedroom doors closed at night but open a window. Sparks from electrical appliances i.e. irons, can start a fire. It is not so common to have a chip pan fire these days because oven chips are more popular nowadays and mostly used. Our local fire stations are situated at Manningtree and Wivenhoe.

At our meeting in the village hall on Wednesday, 3rd May (7.30pm) we shall be discussing Resolutions which are to be put forward at the Annual General Meeting of the National Federation of Women's Institutes being held in June. A Women's Institute Adviser (WIA) will be present to offer guidance to members.

Several of our Institute members attended the Essex Federation's Annual General Meeting held in March at the Charter Hall, Colchester.

June Willgress

FRIENDSHIP CLUB

If you need a break from the household chores why not join us on our OUTING to **BURNHAM** for two to three hours then on to **TIPTREE** for TEA on Wednesday, 31st May starting at Elmstead at 12 noon. Non-members are welcome - just ring Beryl on 01206 830578 or me on 230191. We can't guarantee sunshine but we can guarantee good company.



At our last meeting we were entertained by our own ex-policeman, Mr Pirie, with his many humorous days in the Force which kept us all laughing - as good as a 'tonic' the doctor used to give us in days gone by!

The competition for May is an ASH TRAY.

Vicky Griffiths

Body Bliss

*Ladies Beauty Treatments
Waxing-Facials-Massage-Manicure-Pedicure
Pamper yourself and feel Body Bliss!*

Tel 01206 231971

Hallbrook House
Church Corner
Hall Road
Great Bromley

10% Discount of your first treatment with this ad

**Pot Doodles
Ceramic Painting Parties**



*Ladies nights, birthday parties,
charity events, craft fairs etc.*

Guaranteed no mess and lots of fun.

Apryl Brincklow, Heathdene, Ardleigh Road, Great Bromley, CO7 7TL
Telephone: 01206 230489
E-mail: apryl.brincklow@btinternet.com

Extra help with maths

EFL and other subjects offered by qualified,
experienced teachers

GCSE, SATS, 11+ and general school work

Please 'phone 01206 251691 for details

Special village rates

HISKEYS FARM KENNELS

Boarding Kennels and Cattery

Open 8am to 8pm - 7 days a week

*Quality care for your Dogs, Cats and Small Pets
Playtimes & Country walks for dogs - Cuddles for
cats*

Competitive rates - Inspection invited

GROOMING PARLOUR - WASH & BRUSH

Tel: Anne, Pete or Stuart on 01206 395657
Spratts Lane, Little Bromley, Essex CO11 2PR

**Stuart Harris
CABINET MAKER**

01206 230078

www.harriscabinetmaker.co.uk

Designer & Maker of purpose built,
tailor made and hand crafted furniture.
Restoration and re-polishing of antiques.

Sweet Success HIGH QUALITY
CATERING for
SPECIAL OCCASIONS

WEDDING FUNCTIONS
PARTIES
BUSINESS LUNCHESES
FUNERALS etc.

CONTACT:
LINDA PINHEY
FORGE COTTAGE
HALL ROAD
GT. BROMLEY
COLCHESTER
CO7 7TP

Tel: 01206 230126
Email: lindapinhey@hotmail.com

Janina Morris BA(Hons)

2 Bentley Rd. Lt Bromley, Manningtree, Essex CO11 2PL

Clarinet and Saxophone Tuition
From Beginners to Advanced

Tel/Fax: 01206 391345
Mobile: 07759 148854
Email: janinamorris@hotmail.com

LOCAL REPAIR SERVICE

Radio, Hi-Fi, Small TVs

Computers - Repairs, upgrades, rebuilds, small
networks, virus recovery etc.

Musical - Guitar & Vocal Amps, FX, Mixers etc.

Specialist in repair/refurbishment of **Vintage Radio**
(1920's - 1980's)

What have you got in **your** loft or garage - is it a
classic design, does it have sentimental value?

Giving it a new lease of life may not cost as much as
you think - why not call me with the details?

Call - Mick Shute 01206 396767

- ✓ All work guaranteed
- ✓ Free estimates given
- ✓ Collection/Delivery service available



Photographs fading away?

Old Photographs deteriorate
over time and can be
completely lost along with your
family's memories and history.

We copy and digitally
restore old photographs. Call
us for prices and free advice.

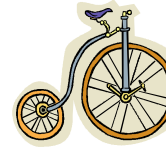
01206 393888

Unit 3B, Riverside Ave West, Lawford,
Manningtree, CO11 1UN
e-mail: info@thephotographicworkshop.co.uk

**St. George's (C of E)
School, Gt. Bromley**

Head teacher: Pat Fitzgerald
Telephone: 01206 230305

The hedge adjoining the old cemetery has
now been replaced by Caxtons just as I
had asked the Parish Council for some
assistance.



The bike shed is still
awaiting a decision on
planning permission by
TDC, does it need it?

Tesco has restarted its
vouchers for computers
for schools, one for

every £10 spent, so don't forget to claim
them if you shop there, and "post" them to
the School.

We sold the spare odd white board to
another school at a good price. Our other
white boards are now all working and of
great benefit to staff and pupils.

TDC do a paint recovery service. Any old
paint given to them (mainly by contractors
where it is left over from a job) is given
away to deserving causes. I recently got
some green paint ready for a volunteers
blitz on the seats and huts next term.

LBC

**Great Bromley &
Frating Playgroup**



At Great Bromley Village Hall.
Monday & Thursday 9.30-12 noon
Wednesday 9.15-11.45am
& 12.15-2.45pm

(Lunch time session also available)
Children: 2years-6 months to 5years.
£5.00 per session Ofsted inspected.
For more details/visits, please contact
Group Secretary-Debbie on 01206
250183



Scallywags

At Great Bromley Village Hall
Friday Mornings 9.30-11.30am
0-5years.Parent and child group.
Activities/themed sessions/play
equipment etc.
For more details or visits please
contact 01206 230625

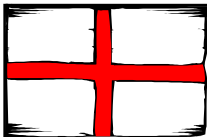
nicenstripy

**reliable, professional,
commercial & residential,
grass cutting and lawncare**

FOR A FREE QUOTE:

call Andrew on
0845 260 7651

www.nicenstripy.com



Brenda and Richard welcome you to
“THE BROMLEY CROSS INN”

For fine ales and good food, brought to you in a friendly, welcoming atmosphere and comfortable, homely environment.

EVENTS during MAY

Thursday 18th CHARITY QUIZ 8.15pm PROMPT start

In aid of THE VILLAGE HALL

Entrance fee £3.00 per head includes light supper. Please **book your table**

Wednesday 24th MUSIC NIGHT 8.15pm PROMPT start

Join us for an evening of traditional acoustic music and light verse. Everyone welcome to sing, play or just enjoy the evening.

* * * * *

BEER / MUSIC FESTIVAL
EAT, DRINK AND MAKE MERRY

At our 4th annual **BEER and MUSIC FESTIVAL** which takes place over the weeked of the Spring Bank Holiday.

MUSIC FESTIVAL- Sunday, 28th May from 3.00pm until late

You are invited to come along and enjoy traditional acoustic music of all types. So everyone, whatever your standard is, book your 15 minute slot, please phone (01206 230282) or call in.

B.B.Q. food available from 5.00pm.

This is a charity event and entrance is free, donations are welcome in aid of the East Anglian Children's Hospices.
 Open ALL day Sunday

Please note minors will not be allowed in the bar after 7.30pm.

BEER FESTIVAL

Commences on the evening of Friday 26th May through to Monday 29th May.

14 real ales with a predominantly local flavour.

All ales £2.20 per pint

* * * * *

Non-Smoking Restaurant

Open for lunches Wednesday, Thursday and Friday as well as Sundays.

Last orders 1.45pm. Evening meals Wednesday - Sunday inclusive.

Telephone 01206 230282

* * * * *

GREAT BROMLEY POST OFFICE at The Cross Inn

Ardleigh Road, Great Bromley CO7 7TL

Telephone: 01206 231073

Mon/Tues: 9.30am-2.00pm Wed/Thurs/Fri : 10.00am - 2.00pm

Sat : 9.00am-midday

- Please note that there is now a wide selection of cards and wrapping paper available.
- A dry cleaning service is also available.

Please ask for details at the counter.



GREAT BROMLEY & DISTRICT CRICKET CLUB

The Quiz night on 25th March made a profit of £380 which will go towards equipment for the colts.

After a hard fought contest the winners were a team from the Kempster family. Congratulations to them!

Thank-you to all those who supported the evening.

Phil Allam



100 CLUB WINNERS FOR MARCH.

- | | |
|------|----------------------|
| 1st. | Mr. Charlie Pirie. |
| 2nd. | Mr. Pat Petchey. |
| 3rd. | Mr. Mark Lamb (snr.) |

GARDENER'S TIPS FOR MAY

Lawns: Mow once a week and apply weedkiller if necessary - remembering NOT to put the grass cuttings on the compost heap under any circumstances and DO NOT use as a mulcher.

Roses: Spray roses against green and black fly and apply general fertilizer.
Biennials: Sow seeds of Canterbury bells, foxgloves, Sweet William and wallflowers

Primroses & Primulas: Why not grow your own - leave seeds to ripen on the plant. Fill a seed tray with moist compost, sprinkle seeds on the surface and cover with a sheet of newspaper and a piece of glass. As soon as the seedlings have two true leaves, pot them up.

Dahlias: Any tubers that have over-wintered in the shed or greenhouse can be planted this month.

Frank Griffiths



BRIGHTLINGSEA & DISTRICT ROTARY CLUB

Our Race night at the Colne School was a success with over 70 people attending. Included in the price was a finger buffet which had fresh prawns as the main attraction. Over

£1000 was raised, and both Essex Air Ambulance and St Helena



Hospice attended to receive their cheques from the ASDA Christmas collection, with the latter to get the lions share of the race night proceeds.

Our Blood Pressure Awareness Day on April 8th. had 25 customers at the Parish Hall Brightlingsea.

Education packs for children in Africa is our next project; these will be purchased locally and sent via the charity Mercy Ships, who actually concentrate on giving medical treatment to African communities. Finally our Colne 25 arrangements are well in hand for September with three different rides: a short family route, a 25 mile route, and a 50 mile route for the "professionals". Details to be announced shortly.

Could you be interested in Rotary? Let me know!

Len Christodoulides

Forthcoming Events

MAY

- 3 WI meeting, Village Hall, 7.30pm
- 6 Plant & Garage Sale, 10.00am, Ilex Farm
- 10 Village Hall Committee A.G.M., Gt Bromley Village Hall, 8.00pm
- 11 Gt Bromley Annual Parish Assembly, Village Hall, 7.30pm
- 13 Quiz Night, Gt Bromley Village Hall, 7.30pm
- 27-29 Ardleigh Flower Festival & Fair
- 31 Friendship Club outing

JUNE

- 3-11 Leonard Cheshire Week, Seven Rivers Cheshire Homes
- 8 Lt Bromley Parish council meeting, 7.30pm
- 10 Summer Fete/Plant Sale, Hamilton Lodge Trust, 2.00pm
- 8 Pre-Inquiry meeting re: Tendring Replacement Local Plan
- 17 PTA Barn Dance, Normans Farm, Lt Bromley
- 17/18 Festival Weekend, Elmstead parish church

JULY

- 15 Coffee Morning at 'The Pippins', 10.30am

SEPTEMBER

- 5 Public Inquiry re: Tendring Replacement Local Plan



CARD

???? QUIZ NIGHT ????

7.30 pm Saturday 13 May 2006

Great Bromley Village Hall

£3.50 per person

Teams of up to 8

Please bring your own food & drink

Pre-book your table by ringing Jenny Willson on 01206 252000

Come and join the fun and help with the continued fight against a new settlement in West Tendring



Raise your Glasses!

Friday 5th May at 7.30pm

Ardleigh School Hall

Join us for an evening of wine tasting with a buffet supper and flower demonstration in Ardleigh School Hall. Back by popular demand - a chance to sample a varied but affordable range of wines from around the world under the guidance of Dave Harrison. You can also pick up some tips on flower arranging or just sit back and enjoy the remarkable skills of Penny Stone.

Tickets £8 available from Elaine Brewster 231168 & Mandy Pratt 230003

Proceeds in aid of the Flower Festival.



COMING SOON!

Friends of Elmstead Parish Church

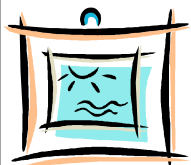
Festival Weekend

Saturday 17th / Sunday 18th June

Art Exhibition and Sale

Home-made Cakes Refreshments + Much, Much More.

Please note the dates **NOW!**



GARAGE & PLANT SALE

Good quality plants for your garden

Saturday, 6th May

10.00am - 1.00pm

at Ilex Farm, Waterhouse Lane, Ardleigh
Plants or anything for the Garage

Sale

gladly accepted before the Sale
(no books, clothes or small bric-a-bac)



Contact Ann Tel: 01206 230679

in aid of St George's Church Funds

ARDLEIGH FLOWER FESTIVAL & VILLAGE FAIR

May 27th-29th 2006

Preparations are well under way for this celebration of village life under the theme of "creation". St Mary's Church will be open for three days, beautifully decorated with flowers for all to see this unique building at its best.

On Saturday there will be stalls and games in the Churchyard and at

Seeley Court by village clubs and societies. Anyone can hold a stall, all we ask is that 50% of any profit you make comes to the Church. Sunday will see the usual round of worship with a Songs of Praise at 6.30pm. The hymns to be sung will have been chosen by you - Ardleigh's Top Ten Favourites. A scratch choir and instrument group will compliment the evening.

On Monday there will be a grand draw at 3.30pm to round off the event.

Various refreshments will be available throughout the weekend.

If you would like to be involved in any way please contact one of the below.

General offers of help - Mandy Pratt (230003)

Setting up/ taking down stalls - Ulrich

Nehmzow (871727)

Publicity - Robin Hill (792046)

Flowers - Sue Hulbert (230458)

Sponsorship & Raffle - Paul Guscott (504115)

Refreshment & Stalls - Elaine Brewster (231168)

Choir & Instruments - Martin Hugget (395927)



HAMILTON LODGE TRUST

Parsons Hill, Great Bromley,
Colchester

SUMMER FETE / PLANT STALL

Saturday 10th June

2.00—5.00pm

Grand Opening by Bobby George,
Celebrity Darts Player
A visit from Suzy at SGR
with Black Thunder

Grand Raffle

Large variety of Stalls and
Entertainment

Free entrance and parking

Registered Charity No. 306080

ST GEORGE'S SCHOOL P.T.A.

Saturday 17th June

We are holding a **Barn Dance**
at Normans Farm, Little Bromley.

Tickets will be £10 which includes home-made buffet.

There will also be a
licensed bar.

This was a very good evening last year and everyone who attended had a great time. Please come along and support the school. Tickets available from School Office or ring Sarah Tyler on 01206 257433.



Saturday 18th November

We are organising a **live band**

at Gt Bromley village hall.

Further details to follow.