

OUT AND ABOUT

Once again this month there has been much activity with the current ongoing projects within the village. However further help is still needed for future projects. Are you able to help and make a contribution to your community and enhance your village?

On page 11 the parish council is asking for suggestions for a community event to be held in the village probably in 2009. At one time a fete, carnival and pantomime all used to be held annually for many years, until they folded for one reason or another. In addition there were big one-off events such as the Teddy Bear's Picnic and the Mad Hatter's Tea Party which brought together, for fun and games, many people from within Great and Little Bromley as well as from far beyond and it would be wonderful once again to have a community event. So please put on your thinking caps and inundate the Clerk to the parish council with your ideas.

Your editor has begun a project to record the memories from inhabitants of Great and Little Bromley on life in the villages during the 20th century. This is going to be quite a large task and one that has already started. A group came together over refreshments before Christmas to record their memories regarding entertainment in the villages. This is just the start of various themes we want to cover. It was a fascinating and jolly morning with stories flowing non-stop. The addition of old photographs added even more colour to the yarns. Having once collated the material, of which there is obviously masses, the intention is to turn all the information into a publication.

Time is pressing to obtain the older memories but what a mine of local legend and historical information we will have by the end.

On page 13 you will see some of the volunteers (you may have spotted them recently on a Saturday morning) who have been working hard planting hedges and trees around and about which in the years to come will add to the beauty of our villages and countryside. The litter picking morning on 15th March will further transform our lanes and byways and who knows, we could enter the Best Kept Village Competition and do well.



One last request, please let me know by 17th March of any amendments or changes that may be needed for the cover pages (organisations, associations, meeting times etc). For financial reasons the cover is only altered once a year and a charge is made for any alterations at any other time. I am always grateful for amendments to be sent sooner than the deadline date so that I am not doing it all at the last moment should there be a query. Thank you.

Leonie Henderson

KITCHEN CORNER

If there are any Seville oranges still around, they make a good sauce to serve with fish; Quantities are for 6 portions of salmon fillet, red mullet or similar fish.

One large shallot, finely diced, the juice of one Seville orange and one sweet orange. Place these in a small pan and simmer over medium heat until the juice has reduced to 2 tablespoons. Add 2 tbs double cream, salt and fresh ground pepper and set aside until



nearly ready to serve. Cook the fish in your usual way - either grill, fry or bake - then keep warm while you finish the sauce. Return the reduced orange juice and cream to the boil. As soon as it thickens slightly lower the heat to a simmer. Have ready 200g cold unsalted butter and cut into cubes. Begin whisking these into the sauce a few at a time, adding more as they melt and amalgamate. You should finish up with a smooth thick sauce. Serve at once with the hot fish. You cannot reheat this one - it will split!

Jill Frostick

SPONSORSHIP AND NEW COVER

Sponsorship will be due in April, when we also decide on a new cover and update the information regarding the Clubs and Organisations of the villages.

Would you all let Leonie know what you want to change, or confirm not to change or add, to the inside covers.

If anyone would like to sponsor the magazine for a part or whole page advert in a month of your choice and have your information on the back cover every month then please contact me for prices.

Len Christodoulides



MATERIAL for the **APRIL2008** edition of 'The Messenger' should reach the Editor, Leonie Henderson, by **Monday, 17th March, 2008** please.

Contributions from anonymous sources will not be printed. Whilst the editor welcomes contributions, photographs etc this is on the understanding that there is no obligation to publish, that the item may be edited and that there is no breach of copyright. Publication is in good faith and neither the editor nor the publisher accept any liability in respect of the content of any article, photo or advertisement, including any error or omission, responsibility for which remains with the author.

Copy can either be delivered by hand, sent by post or e-mail. (see inside back cover for details) or via the link on the websites www.greatbromley.org.uk or www.littlebromley.org.uk

Please support the sponsors of our magazine.

CRICKET CLUB

100 Club winners February 2008

- 1st. B Hitchcock
- 2nd. A Bruce
- 3rd. W Kempster

FEBRUARY GARDENING TIPS

Buddleias: March is the time to prune buddleias. Cut hard back to a strong bud.

Early flowering plants such as **plums, pears, apples** and **cherries** all need fertiliser at this time of the year to aid strong flowering and growth. I use national growmore.

If you are going to plant **anemones**, soak the tubers in a saucer of lukewarm water for 24 hours. They will double in size then plant in a well drained spot in the garden.

If you have **nest boxes** up now is the time to take them down and clean them out before the birds take up residence.

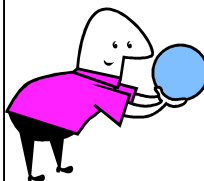


Start your **seed potatoes** off by placing them in egg containers with the shoots uppermost, place under the staging in the greenhouse or in the garden shed. Plant one row of first earlies now. When they are through plant the next row then you will have new potatoes over a longer period.

Update on my **fig tree**, the green buds are just beginning to show.

Frank Griffiths

CARPET BOWLS



The match result figures are not very good this month. Of the 3 league matches played over the Christmas period, we

lost 6-2 to Brightlingsea away, a drawn game with Clacton-on-Sea at home and lost 6-2 to Silver Dawn away.

Essex County Singles Championship

On 13th January at Braintree, Great Bromley entered four players. Each player had three games in their particular group. Richard Bates managed 1 win and 2 defeats. Pat Petchey missed winning all his 3 games by just 1 shot, Andrew Childs also lost just one 8-5. Ron Copp was runner-up in his group and just failed to qualify for the next round. The number of shots is significant. They were happy with their day and had a good time.

Sunday 20th January saw Andrew playing for Essex again at Needham Market against Suffolk. This was a first time ever win for Essex away to Suffolk. They scored 19 points to Suffolk's 17. Andrew's team won 2 out of 3 games and they had the best overall score of the 6 Essex teams.

Brumbella Charity Day

It seems such a short time since the last one, but my diary tells me it certainly is a year. The money raised this year will be sent to a rehabilitation fund for local paratroops. Not widely advertised but very worthy. We will be very grateful to our usual local supporters this year. Thank you.

Nancy Kempster

GREAT BROMLEY VILLAGE HALL CHARITY TRUSTEES

The Village Hall committee held its first meeting of 2008 on 22nd January with all members, except one, present. The chairman, Fred Nicholls, welcomed those present and introduced Tracy Griffiths who was duly co-opted onto the committee.



The Chairman and Secretary said they had taken up the option of attending a Rural Community Council of Essex all day workshop - 'Manage your Future' - at Lindsell Village Hall in early last December. Subjects discussed were the Role of Chairman, Secretary and Treasurer (Jan Cole), Funding Bids (Beverley Davies), Constitutions and Legal Structures (Sandy Adirondack) and Undertaking a Risk Assessment (George Whittle). A buffet lunch was provided with over 25 delegates present. A very useful day with another workshop scheduled for 21st February 2008.

The Rural Community Council of Essex have also introduced a Hallmark Standards Scheme in which village and community halls can be judged against a national quality management scheme that rewards good practise in management and administration. There are three levels

of award: Hall committees can apply starting with level one, which we have done.

Our apologies to those of you who were unfortunate enough to experience heating problems at the hall during January due to the boiler locking out when attempting to run. The problem has been dealt with and the heating should be back, on demand, without further human intervention.

On Saturday, 15th March at 7.30pm the 'Nostalgia' Big Band will make a return visit for you to listen and dance the evening away. Tickets may be booked with Beryl Hurst on 01206 230578. Hurry, they are going fast!

Also on Saturday 10th May at 7.30pm, there will be an evening of entertainment with Angie Diggins at the village hall following on from her shows at other venues in the UK. Tickets may be reserved with Beryl Hurst on 01206 230578.

To book the hall, contact Mrs Lynda Allam on 01206 230375 who will advise on availability and cost. The Hall may be seen on www.greatbromley.org.uk and click on "village hall".

Bevan Willgress



WOMEN'S INSTITUTE

Sue Gambling and Marianne Dow from ASDA came along to our February meeting to tell us about the company.

In 1920, the Stockdale family opened a shop in Leeds, Yorkshire, which is where their headquarters remains today. When the Asquith brothers joined up with them sometime later, ASDA became a limited company. By 1984 the company had increased to 100 supermarkets and began to open stores in southern



England.

Sue and Marianne then invited us to ask them questions on any aspects of ASDA which they answered fully. An interesting evening.

Our next meeting is on Wednesday 5th March at 7.30pm in the village hall. We will be having a 'Denman Debrief' following on from our recent group visit to Denman College in January.

June Willgress

College Capers!



Did you have a go at making a Celtic Knot heart card for Valentine's Day as shown in last month's Bromley Messenger? This is just one of the designs introduced to seven members of the local W.I. when they visited Denman College in Oxfordshire in early January. Other delights on the Design for Crafts course included a King Solomon's Knot, a Josephine Knot, a Fish Entrail Knot (where do they get these names?), Border designs and a Celtic Cross, followed by Trefoils, a Mobius Strip and infilling as shown on early English manuscripts. The

results were quite impressive.

Not to be outdone, the other five members in the group enjoyed Soft Shaded Embroidery - Long and Short stitch. This sounds very formal but they had a lot of fun and were soon producing beautifully embroidered flowers, leaves and bees and have become really enthusiastic about the craft.

The whole visit was superb, with comfortable accommodation, good food, a friendly atmosphere and new people to meet (not all W.I. members!). We have our Awards for All grant to thank for all this and shall be sharing some of our skills in the village.

So why not come along to our meeting on Wednesday 5th March at 7.30pm in the village hall to our Denman Debrief and learn something new? You'll be most welcome.

Sue Orriss



PARISH COUNCIL NEWS

Great Bromley Parish Council

www.essexinfo.net/gbpc

Planning

Tendring District Council has decided the following planning applications:

Alvi, Mary Lane South – rear extension

Morants Hall, Colchester Road – retention of open shelter and decking

Park Farm, Hilliards Road – replacement agricultural building

Reservoir

The council will discuss the proposed reservoir with residents immediately following the developers' presentation at 6.30 pm on 13 March.

The next meeting of the Council will be at 7.30 pm on Thursday 13 March 2008 at the Village Hall Great Bromley.

Ken Bromfield, Clerk to Council

Proposed Agricultural Reservoir at Slough Farm, Great Bromley

You are invited to attend a public meeting arranged by Great Bromley Parish Council on Thursday 13th March at 6.30 pm in Great Bromley Village Hall to discuss the agricultural irrigation reservoir which it is proposed to construct on land at Slough Farm (off Carrington's Road).

Representatives of the four farmers who will use the reservoir, together with the planning agent, will present their proposals and answer questions.



Great Bromley Community Event 2009



The Parish Council is considering the feasibility of an annual village community event in Great Bromley – as from 2009.

There have been such events in the

past and the village appraisal suggested that a summer fete held on the village hall grounds might be welcomed.

An annual community event might have the following aims: the promotion of a

community spirit; the provision of a day's enjoyment for residents of all ages; to break-even financially and possibly raise funds for community projects or local good causes.

The Parish Council would like to know whether or not residents think that an annual community event is in principle a good idea. And if it is, what form should such an event take?

The Parish Council would like to hear your views. Please either email or post your comments to the Clerk or complete the questionnaire on the council's website (www.essexinfo.net/gbpc)

GREAT BROMLEY PARISH COUNCIL

WORKING GROUP REPORTS

Working Group 9: Closed Cemetery

The start of the new hedge planting alongside the closed cemetery has commenced. The first task was the removal of the old parts of



the hedge that had become overgrown with ivy and numerous self sown trees. At the same time a large yew stump was removed from within the closed cemetery. We are very grateful to Ken Robinson for his skilful work in removing the tree stumps.

The church meadow project continues, the proposed plans will have been discussed with the school and the church and a final agreement will hopefully have taken place. The working group believes that they have taken into account the views of the school, the church and any parishioners who have cared to voice their opinions in developing the plan. We have tried very hard to come up with the best solution to everybody's needs.

We have some new offers of help with the closed cemetery if anybody else is interested in coming along on Saturday mornings starting the first Saturday in April you will be most welcome.

Fred Nicholls

WG 13 – Tree Planting

Thanks to all those volunteers who turned out on 2nd February to plant trees in Mary Lane North, Badley Hall Road and on the



footpath between these roads. A total of 33 semi-mature trees were planted, including oak, common lime and sweet chestnut, bringing the total number of trees planted by WG9 in the village this year to 219. Other sites at which trees have been planted include Brook Street, Parsons Hill, the 'Park' off Parsons Hill, the footpath between Harwich Road and Moreham's Hall and ex-orchard land at Burnt Heath.

Suggestions for suitable locations in the village for further tree planting would be gratefully received - please contact me on 01206 250263.

Martin Frostick

WG11 - Litter Picking and Village 'Spring Clean'

PICK UP THE PIECES. The village spring clean day is to be held on 15th March and you are invited to join in the event between 10.00am and 12 noon. Can you spare the time to lend a hand? We had a very good response last November and hope for an even better one this time!



You will need some gardening gloves and appropriate clothing. Some high vis jackets and litter picks will be available, but do feel free to bring along your own if you have them. However much (or little) time you can spare, join the team leaders in the car parks of either the Bromley Cross, the Old Courthouse or the Snooty Fox at 10.00am.

Please note that, for insurance purposes, volunteers should be fit and be between the ages of 15 and 75 years. Under 15s are encouraged to participate but parental permission and appropriate supervision will be required.

Brenda Perry

Forthcoming Events

MARCH

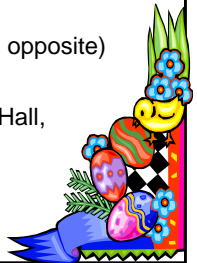
- 5 WI meeting, Village Hall, 7.30pm
- 6 'Play it Safe' Seminar, Great Baddow, from 10.00am
- 9 St Mary's Church APCM, St Mary's, Ardleigh, 12 noon
- 13 Proposed Reservoir meeting, Village Hall, 6.30pm
Gt Bromley parish council meeting, Village Hall, 7.30pm
- 15 WG11 Litter Picking Day (see page 13 for details)
Dance with 'Nostalgia' Big Band, Village Hall, 7.30pm
- 16 St George's Church APCM, St George's, Gt Bromley, 11.45am
- 19 Easter Fayre, St George's School, 1.45pm
- 20 Friendship Club meeting, Village Hall, 2.00pm
- 29 Pie & Punch Evening, St Mary's School, Ardleigh, 7.00pm

APRIL

- 10 Lt Bromley parish council meeting (Public Assembly), 7.30pm
Gt Bromley parish council meeting, Village Hall, 7.30pm
- 11 Day of Fun, Fitness & Frolics, Village Hall, 11.00am (see page opposite)

MAY

- 8 Gt Bromley parish council meeting (Parish Assembly), Village Hall, 7.00pm
- 10 Plant & Garage Sale, Ilex Farm, 10.00am-1.00pm
Angie Diggins, Village Hall, 7.30pm
- 24 Coffee Morning, Village Hall



PRINCES THEATRE Town Hall, Clacton

- | | |
|-------------------|---|
| Saturday 1 March | The Counterfeit Police |
| Friday 14 March | Divas of Country |
| Saturday 29 March | Abba Forever |
| Thursday 3 April | Vienna Festival Ballet, The Sleeping Beauty |
| Friday 7 April | Ray Gelato and his Giants |
| Friday 11 April | Cream of Clapton |
| Saturday 19 April | The Spirit of Pink Floyd |
| Saturday 26 April | The Motown Show |
| Saturday 31 May | Homeward Bound - Simon & Garfunkel |
| Friday 6 June | Ledd Zepp - Led Zeppelin |
| Tuesday 5 August | Joe Pasquale |
- For tickets contact 01255 686633 or book online at www.essex-live.co.uk or www.tendingdc.gov.uk

ST GEORGE'S CHURCH, GREAT BROMLEY

ANNUAL PAROCHIAL CHURCH MEETING

Sunday, 16th March
11.45am

Following the Parish Eucharist
Please note this is two weeks later than the date originally planned

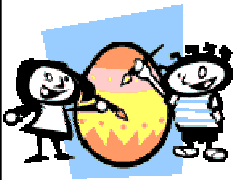
ST MARY'S CHURCH, ARDLEIGH

ANNUAL PAROCHIAL CHURCH MEETING

Sunday, 9 March
12 noon

Following the Parish Eucharist
To be chaired by the Rev'd Andy Colebrooke, Rural Dean
Please note this is two weeks later than the date originally planned

EASTER FAYRE



at
St George's
School
on Wednesday,
19th March
1.45pm-3.00pm

PIE & PUNCH EVENING

Saturday, 29th March
7.00pm-10.00pm
St Mary's School, Ardleigh

Tickets: £6 Adult, £3 Child or
£15 for a Family



*All proceeds in aid of
forthcoming Flower
Festival to be held in
May*

Plant & Garage Sale

10th May
Ilex Farm
10.00am-1.00pm



AN EVENING OF ENTERTAINMENT WITH ANGIE DIGGENS

on
Saturday 10th May
at 7.30pm
Tickets may be reserved from
Beryl Hurst on 01206 230578



*In aid of Village Hall
Funds*

NOSTALGIA BIG BAND

on
Saturday 15th March
at 7.30pm
in the Village Hall

Tickets may be
booked from
Beryl Hurst on
01206 230578



*In aid of Village
Hall Funds*

A Day of Fun, Fitness and Frolics

Great Bromley WI invite you
to a day of

Fun, Fitness and Frolic
on Friday, 11th April
from 11.00am until 3.30pm
at Great Bromley village hall.

The day will be led by Debbie Miller and will be suitable for all abilities, ages and fitness and will consist of an easy line dance session, a chat on aspects of healthy living, including nutrition, and a final session to include easy tap dancing and theatre. A healthy lunch will be provided as well as tea and coffee.

There will be no charge - please just come along and enjoy the day. To assist catering arrangements please book a place by calling Ann on 01206 230563 or Sue on 01206 251949.



FROM THE GT BENTLEY DOCTORS' SURGERY

It's always flattering when people think you know it all or can do everything, but just occasionally the doctors here have to admit that someone else knows best. A good example of this is dentistry, as we have had to explain to several people recently.

I'm afraid that if you have a problem with your teeth or gums, you really do have to see a dentist rather than a GP. Even if you just think you need pain-killers for toothache or antibiotics for a gum infection, please contact a dentist rather than us. If you see a GP, he or she should always explain that they aren't the right person to deal with your problem and send you away. You will probably have caused yourself a longer wait than necessary by trying the surgery first.

A dentist will probably tell you that after spending five long years qualifying, they are bound to know an awful lot more about teeth, gums and all associated workings than a GP does.



They certainly grumble about doctors who do try to intervene in dental problems, saying that proper treatment might have been delayed or

that the root causes (no apologies for the pun) of the patient's problem have not been properly investigated.

So, if you have a dental problem, please ring your dentist. If you haven't got a dentist and have difficulties registering with one, a lady called Kathy Flegg at the Primary Care Trust will be glad to help you. She can be contacted on 01206 288582. Additionally, if you need a dentist urgently outside normal hours, Harmoni who provide the out of hours GP service locally will be able to give you contact details for a duty NHS dentist who will look after you at NHS rates. The number to ring for this service is 0845 602 5238.

This is, incidentally, another reason why it is so important that you help the receptionists by giving them a rough idea of why you need to come in when you make your appointment. We really do want to get you in to see the right person as quickly as possible, especially if you are in pain. It's frustrating and annoying for everyone if you end up seeing someone who can't deal with your problem.

Talking of helping the receptionist, please don't forget to ask for a longer appointment if you have more than one problem to deal with. Our ten minute slots are intended to be adequate for the doctor to sort out a normal, single problem. If you have two or three problems to address – or something that might be complicated – please ask for a double or even a treble appointment. The main reason that the doctors sometimes get behind and patients end up twiddling their thumbs in the waiting room for ages, is that someone has brought in a shopping-list of issues in the hope that they can all be sorted in ten minutes. Sorry, but that just isn't realistic.

If anyone is feeling generous at present, we are collecting money towards a new defibrillator for the surgery. There are now automatic defibrillators available which work out if someone needs to be shocked and at what power. That's much better than the terrible old machine that we got rid of a few years ago because nobody could work out how to use it any more. (The rumour that it went to a car-boot sale is totally untrue. The doctors wouldn't let me take it.) Anyway, the new one that we want to buy comes with full training and will do the job properly and automatically if anyone is unfortunate enough to need it. The British Heart Foundation is very

Continued on page 19 .../

./..continued from page 17

kindly helping out with a good part of the cost, but any other contributions, which can be left at reception, would be very gratefully received.



These days, we get a lot more requests than we used to from solicitors and other specialist legal firms for copies of patients' notes, usually following an injury or accident for which some sort of compensation is being sought. Just a small word of warning about these requests.

If you sign an authority for copies of your notes to be released, it's worth checking just how far back the legal people intend to go. Usually, when we get a request, it asks us to supply all notes right back to when you were born, not just since the incident occurred. Everything in your past, however personal or embarrassing is then open to scrutiny by the lawyers or, more likely, their staff. So, if you don't really fancy someone trawling all through your medical past, it is worth specifying boundaries for them and making sure they are agreed in writing before you sign the authority, otherwise everything will be laid bare.

Hugh Cronin, Practice Manager

St. George's (C of E) School, Gt. Bromley

Head teacher: Pat Fitzgerald
Telephone: 01206 230305

The School over the year collects money and gifts for various charities e.g:

	£
British Legion Poppy Appeal	32.00
Fire Swim	1435.00
Leukaemia research	100.00
UNICEF non uniform day	168.00
Christmas Shoe Box - 30 boxes	
Well done.	

The School has just been given an award in recognition for at least 75% of the children took part in 2 hrs of PE per week.

Should we be looking at the 2012 Olympics then?

CLASSIFIED ADVERTISEMENT

WANTED

Experienced rider to help exercise Anglo Arab mare. Please contact Elspeth on 01206 393787



Great Bromley & Frating Playgroup

At Great Bromley Village Hall.
Monday & Thursday 9.30-12 noon
Wednesday 9.15-11.45am
& 12.15-2.45pm

Session Tel No: 0785 7503103
(Lunch time session also available)
Children: 2years-6 months to 5years.
£5.00 per session. Ofsted inspected.
For more details/visits, please contact
Group Secretary-Debbie on 01206
250183



Scallywags

At Great Bromley Village Hall
Friday Mornings 9.30-11.30am
0-5years.Parent and child group.
Activities/themed sessions/play
equipment etc.
For more details or visits please
contact 01206 230625

Little Bromley Parish Council

The next meeting of Little Bromley Parish Council will be held on 10th April (Public Assembly) at 7.30pm. For the venue please contact the Parish Clerk on 01206 391015.

FRIENDSHIP CLUB

At our last meeting we had Mrs Marylyn Banbridge to talk to us on the work being done, with slides to show us the various building projects in Rawanda. It is more interesting when one can see where the money is going when people give to this marvellous charity. We were able to buy jewellery and small articles which had been made in the village.

Our next meeting is on 20th March and the competition is a small **novelty musical item**.

Vicky Griffiths

POLICE



Tendring District
Commander - Chief
Inspector Jonathan
Hayter

News From the February
issue of the e-zine

Upbeat

Don't leave your tools in your van overnight

Essex Police is warning trades-people not to leave tools and other valuable kit in their vehicles overnight. Apart from the value of the property stolen, victims of this type of crime also have to contend with the disruption to their work and possible loss of earnings.

"Ideally vans should be kept in a locked garage overnight, but if this is not possible all valuable and easily portable items should be removed from the vehicle as a matter of routine and kept somewhere safe and secure.

"If the vehicle has to be left outside, it is best parked with the rear doors close to a wall making them impossible to open fully. The vehicle should also be fitted with an appropriate alarm system and a strong, secure box or cage for valuable, easily transportable items."

Mounted unit's skills recognised at parade

Essex Police officers from the reinstated

mounted unit have had their specialist training and qualifications officially recognised at a passing out parade.

Bike Safe event

Riders are invited to attend the Bike Safe launch being held on Sunday, April 27, 2008 at Millfields in Burnham. They will be able to have an assessed ride on a number of new demonstration machines and have a look around the trade stands attending. Any riders should visit the website or ring Sgt Mick Green on 01245 240600 extension 480520.



Be bogus caller aware

Essex Police is asking residents to be on their guard when answering the door to callers. There are many different kinds of bogus caller scams in operation at any given time. The list is as endless as the human imagination. But we can deter bogus callers by not making it easy for them.

If you would like a free copy of the Home Office's Be Safe, Be Secure leaflet please send your name and address to nicola.bastendorff@essex.pnn.police.uk

FROM THE PAST

GREAT BROMLEY VETERINARY SURGEONS

Part 1

The churchyard has in it a tombstone where the wording states:

Sacred

To the memory of
THOMAS NORMAN

late of this parish

VETERINARY SURGEON

Who died Sept 17th 1844

Aged 63 years

In the midst of life we are in death

The 1859 Post Office Directory lists among the inhabitants JOHN JOSEPH

HAZELL, Veterinary Surgeon.

South of the tower is another tombstone which records

In affectionate

Remembrance

JOHN JOSEPH HAZELL

M.R.CV.S.L., M.V.N.A.

Of Great Bromley, Essex

Who died October 31st 1876

Aged 54 years

A footstone says J J H 1876

Great Bromley has had many professional men among its inhabitants.

John Appleby

... AND 20 YEARS ON

S. George's School

Preparations are now well in hand for the celebration of the 125th birthday of the school to be held in April. On Friday 22nd April, there is to be a Thanksgiving Service in S George's church at 11.00am at which the Bishop of

Chelmsford will be present. A particular welcome will be made to all old pupils of the school who attend. Other activities are being arranged which will be announced in the next issue. Pupils are to be given a commemorative gift, and Mr John Appleby is

preparing an interesting leaflet on the history of the school.



Brownies

It is wonderful, the floor of the hut is dry even after all the rain. Mr Peter Hills, County Standard Newspapers, visited us in January to present the cheque. It was raining hard of course. We were expecting him at 5.30pm but the time passed and no visitor came. Then at 6.40

a photographer arrived who assured us that Mr Hills would arrive at any moment. We arranged ourselves suitably; Eleanor was perched on the back of a chair which proved to be too uncomfortable. We sang songs and entertained the photographer. At 7 o'clock the parents arrived and it was decided to use a dummy cheque for presentation, which Mrs Henderson provided. Just at the crucial moment in stumbled a decidedly wet and muddy Mr Hills. He had been searching the area since 5.40pm. So the photographer worked very quickly and went away as he had another assignment. Mr Hills said that the usually made a little speech but declined to do so that night. We said we would ask him back when the hut was finished, loo and all, and he jokingly (?) replied 'In two years time?'. So hopefully this summer we shall have an Event.



LETTERS



I was interested to read the item from Tudor Smith in the February 'Messenger'. Although we did not live in Little Bromley, my sister, Sylvia, and myself lived near Tudor and Hugh's grandmother in Oxford Road, Mistley.

We remember quite well their Mum and Dad and can picture Elizabeth in her nurse's uniform and Worthy on his bike and can recall the boys being born.

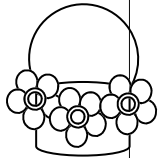
Barbara Hall (née Ling)

CRAFTS FOR MOTHERING SUNDAY OR EASTER

Flower Basket

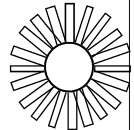
You need:

Basket: 18" x 24" Heavy coloured or white paper
Flowers: Make 2 each from 3 different coloured sheets paper
Leaves: Green paper
Pritt stick
Scissors
Hole Punch (Optional)



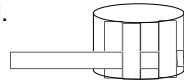
Instructions:

Cut heavy paper into approximately a 16" circle with a 7" circle drawn in the middle. The inner circle will be the basket bottom. Trim area around this into 1" radiating strips. Bend radiating strips up at dotted lines to begin to form basket side.

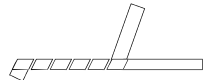


Cut about eight 1" x 24" strips out of the same paper. Beginning close to the bottom of basket, weave one of these strips in and out of the radiating strips all the way around the basket. Cut off or add extra piece to complete first woven level.

Secure ends with glue. Weave two or three more levels. Fold or cut excess radiating strips even with the top level.



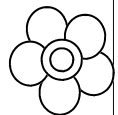
To make the handle, wrap one of the pre-cut strips (the core) with another pre-cut strip as shown:



Secure ends with glue. Continue with additional strips until the handle core is covered. Trim ends. Glue to inside of basket.

Cut out flowers and some leaves. Bend petals up slightly at edges. This will add depth to the flowers. Use a small dot of glue in the centre of each piece to secure. Punch out small circles with a standard whole punch for flower centres.

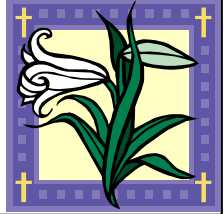
Glue the flowers around the basket. Glue on leaves, tucking them under flower petals.



The Bromleys Easter Lilies

Those who wish to contribute towards the Easter Lily fund in memory of a loved one, please contact me before 16th March.

Ann Wild (01206 230679)



Playing Fields & Play Areas Seminar

'Play it Safe'

Thursday 6th March 2008

Registration and Refreshments 9.30 am

10.00am – 4.00pm

Great Baddow Millennium Community Centre

Great Baddow Recreation Ground, off Baddow Road, Great Baddow, CM2 9RL

Funding ~ Case Studies ~ Safety
Equipment ~ Support ~ Advice

This seminar is aimed at those managing community play areas, sports fields & open spaces. You may be a

Parish Council, Village Hall Committee or Local Charity.

The seminar will offer advice on management issues, funding opportunities and sign-post where you can go for help in the future.

There will be a 'Walk and Talk' demonstration from Roger Davis on behalf of ROSPA looking at inspection, maintenance and management of children's play-grounds and ancillary items. Followed by a look at 'Risk in Play'.

This event is free; lunch and refreshments included: you may make a voluntary contribution of £3 towards refreshment costs which can be paid on the day or in advance. Please bring appropriate clothing and footwear

To apply contact: Rural Community Council of Essex, Threshelfords Business Park, Inworth Road, Feering, CO5 9SE

You may reserve a place by telephoning 0844 477 3839 and speaking to Kirsty, Sue or Suzanne.

Rural Community Council of Essex is a Registered Charity, Registered number 1097009 and a Company registered in England and Wales, Registered number 4609624



ST. GEORGE THE MARTYR, GREAT BROMLEY

united with St. Mary the Virgin, Ardleigh



Services for March

Sunday 2nd	LENT 4 8.00am 10.30am 6.30pm	MOTHERING SUNDAY The Eucharist The Parish Eucharist Evening Prayer	<i>St. Mary the Virgin</i> <i>St. George the Martyr</i> <i>St. Mary the Virgin</i>
Sunday 9th	LENT 5 8.00am 10.30am	PASSION SUNDAY The Eucharist The Parish Eucharist	<i>St. George the Martyr</i> <i>St. Mary the Virgin</i>
HOLY WEEK			
Sunday 16th	8.00am 10.30am 6.30pm	PALM SUNDAY The Eucharist Blessing of Palms & Parish Eucharist Evening Prayer	<i>St. Mary the Virgin</i> <i>St. George the Martyr</i> <i>St. Mary the Virgin</i>
18th	7.30pm	Meditation with Eucharist	<i>St. George the Martyr</i>
20th	7.30pm	MAUNDY THURSDAY Eucharist of Last Supper Watch until midnight	<i>St. Mary the Virgin</i>
21st	11.00am 2.00pm	GOOD FRIDAY From St Mary's School to church Stations of the Cross Passion of the Lord	<i>St. Mary the Virgin</i> <i>St. George the Martyr</i>
Sunday 23rd	5.00am 8.00am 10.30am	EASTER DAY Easter Vigil Eucharist of the Dawn Eucharist Parish Eucharist	<i>St. George the Martyr</i> <i>St. George the Martyr</i> <i>St. Mary the Virgin</i>
Sunday 23rd	8.00am 10.30am 6.30pm	EASTER 2 The Eucharist The Parish Eucharist Evening Prayer	<i>St. Mary the Virgin</i> <i>St. George the Martyr</i> <i>St. Mary the Virgin</i>

ADVANCE NOTICE

Sunday 6th April 10.30am Bishop Christopher to preside and preach *St. Mary the Virgin*

Holy Communion every Friday at 11.00am at Seven Rivers, Hall Road, Great Bromley.

