

# THE BROMLEY MESSENGER

JUNE 2013

Volume 28 No 3

## WHERE'S OSSI?

Look out for **Ossi** in Colchester where he will be on display between June and September.

Judged by Michaela Strachan, a television presenter, with the comment that Ossi was a "Fab waterhole design".

There were 82 entries in all with St George's entry being selected as one of the top 12.

*Congratulations from The Bromley Messenger for being so highly placed.*

*See page 3 for full report.*



St. George's (C of E) School, Gt. Bromley



## THE FIRST PAGE

Being stuck indoors with nothing to do and with Mistress dashing back and forth to Colchester, she has delegated the work to be done on the Messenger to me. I cut my paw rather

badly whilst out one night. I haven't told Mistress what I was up to and I shan't tell you either. I had to have an X-ray, anaesthetic and stitches; Mistress moaned that she had to pay a lot of money for my silly adventures. I had to endure the indignity of wearing a plastic bucket on my head so I couldn't get those irritating stitches out. Paw pads mend slowly and I have been confined to the house for three weeks! Three weeks with the sun occasionally shining, the mouse population growing, the rabbits increasing in numbers before my eyes - all this going on while all I can do is look out of the window. Even scratching the furniture didn't make them release me although I did escape once by

being under the dog's feet but I didn't get far as I was hampered by the bandages and the bucket. Beware, though, I shall soon be free.

I see there is, from the school, a giraffe loose in Colchester. Quite where no-one knows yet but Mistress would like a good photo of Ossi when you find him, maybe with you standing beside him that can be printed in the Messenger.

As you will probably know on 2 May, Mr Carlo Guglielmi, was elected as the member for Tendring Rural West on Essex County Council. Of 13,583 registered voters only 4,027 voted, 25 of which were spoilt papers. The overall turnout was 29.6% and Mr Guglielmi secured 1,515 votes or those of 11.15% of the registered voters in the Ward. As our democratically elected representative we wish him well. There were five other candidates but, as far as our household was concerned, we were told nothing about them and received no literature. Poor show. However, if we do not vote we cannot complain about any decisions taken on our behalf.

**MATERIAL** for the **JULY** edition of 'The Bromley Messenger' should reach the

Editor, Leonie Henderson, by **14th JUNE, 2013** please. Contributions from anonymous sources will not be printed. Whilst the editor welcomes contributions, photographs etc this is on the understanding that there is no obligation to publish, that the item may be edited and that there is no breach of copyright. Publication is in good faith and neither the editor nor the publisher accept any liability in respect of the content of any article, photo or advertisement, including any error or omission, responsibility for which remains with the author.

Copy can either be delivered by hand, sent by post or e-mail. (see inside back cover for details) or via the link on the websites [www.greatbromley.org.uk](http://www.greatbromley.org.uk) or [www.littlebromley.org.uk](http://www.littlebromley.org.uk)

For details of availability and costs for **ADVERTISING** in the 'The Bromley Messenger' please contact the Treasurer on 01206 230537

***Please support the sponsors of our magazine.***

# Seven Rivers

Residential Care Home, Hall Road, Great Bromley

## Grand Summer Fete

Grand  
Raffle!

Music!

Marching  
Majorettes!

Face  
Painting!

Fancy Dress  
Competition!

Licensed  
Bar!



Sunday 30<sup>th</sup> June  
from 1pm

**There's fun and games at the Fair  
Enough for one and all to share!**

Arena Events!

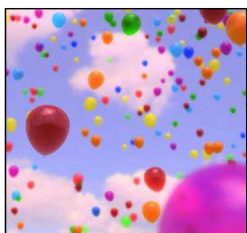
Tombola!

Barbeque!

Cake Stall!



Lucky Ducks!



Toy Stall!

Ice creams!



Balloon Race!

Tea and Coffee!

Bouncy Castle!

### Lt Bentley Hall Waterways & Garden Show

Saturday 1<sup>st</sup> June & Sunday 2<sup>nd</sup> June 2013

Opening Hours – 10am- 5pm

Entry – Adults £8. Children U15 – Free

Garden Open, Show Gardens, Gardening &

Food Talks,

Childrens Garden Competitions, Childrens  
Fairground,

Hot & Cold Food. Afternoon Tea Garden.

'One of the finest Private Gardens in East Anglia'

Disabled Access. No dogs except guide dogs.

[www.littlebentley.net](http://www.littlebentley.net) or 07802 282193

# LITTLE BROMLEY AMENITIES GROUP

***There's fun and games for all to share***

## ***At The Seven Rivers Summer Fayre!***

At last the sun is shining and everyone at Seven Rivers is busily planning for the biggest event of the year – The Grand Summer Fete which takes place on Sunday, 30<sup>th</sup> June, beginning at 1pm.

As usual, we have a fun packed range of activities suitable for all ages. We have face painting, fancy dress and

funny photos – just like the old days - tombola and a grand raffle, a bouncy castle and, new this year, a Balloon Race!

Seven Rivers, a Residential Cheshire Home for people with disabilities, is situated in its own beautiful grounds in the village of Great Bromley so do come along for a fun-filled afternoon on 30<sup>th</sup> June

***– we'll see you there!***



## ST. GEORGE'S (C OF E) SCHOOL, GT. BROMLEY

Head teacher: Julie O'Mara  
Telephone: 01206 230305

### **Stand Tall Project**

Wednesday 1<sup>st</sup> May was quite a sad day for Class 3 as Ossi, our Colchester Zoo giraffe was collected. After



months of designing, decorating and varnishing, he was finally collected and taken to be part of the zoo's display. The children have loved having him in the class and worked carefully on his design and decoration, every child in the class

can show you the 'bit they did!' So, over the summer, look out for him around Colchester and think not only of the zoo's 50<sup>th</sup> anniversary, but our

150<sup>th</sup>! We will be given a location, which we will pass on to you as soon as we know. Also, many huge thanks to Mrs Larkins, whose artistic skills helped make the project such a success!

### **Children's University Graduation**

We are thrilled that 13 children from St George's School graduated from the Children's University last month.



# 150 YEARS OF ST GEORGE'S SCHOOL

Great Bromley school was founded in 1863 – at that time it was known as St George's Church of England National School. The Essex Standard, on 14 January 1863 reported:

“A parochial school room, which has long been needed in this extensive parish, has just been erected on a plot of land near the church, kindly granted for the purpose by the Hon and Rev. F Baring. The building, designed by Mr H.W.Hayward, architect, of Colchester, is in the perpendicular style or red brick with Caen stonedressings. The builder was Mr Capon, of Manningtree, and the cost, defrayed by subscription, has been about £260. The school-room stands in a large playground, suitably laid out, and presents a very neat and pleasing appearance.

“The ceremony of opening the new building, on Wednesday last, was preceded by morning service in the parish church, the prayers being read by the Rector, the Rev. H.E. Graham, and a sermon preached by the Right Rev. the Lord Bishop of Rochester.”

A quick search of the newspapers in the subsequent years revealed these gems: In October 1871, one of the earliest pupils, William Goody was charged with stealing carrots. In Colchester Town Hall, Goody (aged 15) was asked “Have you ever been to school?”

“Yes Sir; I went to Great Bromley School for six years.”

“What! And cannot either read or write?”

“No, Sir.”

“Then you are not a very great credit to your school!”

In May 1879 a burglary was reported: “On Monday night the Great Bromley National School-Room was broken into, the clock defaced, the pendulum carried off, and the

ink-stands strewn about, and other damage done. £5 reward has been offered for the apprehension of the offenders.”

On a more positive note, in February 1877 a successful concert was given in the School-room, with amongst the performances: “Irish Airs” by Mr H Eagle, “The old cottage clock” by Mr W Skeet, “Pierrot” by Mrs Nunn, “Millie's Faith” by Mrs Sargeant, “The Powder Monkey” by R Atkins (Jr.), and Mr Nevard's handbell ringers performed along with the choir. I suppose in those days, long before the Village Hall, the school room would have often been used for such gatherings.

## Did you know?

Our village parson from 1948-76, Rev. James Henry Ransom, always wrote “S.” as the abbreviation for Saint, not the more usual “St.” which to him meant Street, and he found its use annoying. He also put a double “s” on Christmass to emphasise we were celebrating the Mass of Christ. I well remember him telling my class those things in school in the late 1960s; I mentally picture him with a cigarette in his hand, but don't suppose he did actually smoke inside the classroom!

©Hugh Frostick 2013

How to make an Annual Meeting enjoyable and have fun?

Join us at Great Bromley W.I and find out.

Historically Annual Meetings were held in the autumn months of the year but in 2011 The Essex Federation decided to change to a Spring Annual Meeting and therefore it is about 18 months since our last meeting of this kind. Book keeping and financial matters have had to be adjusted accordingly. This year our visiting W.I.A (Advisor) was Sheila Gunson. Sheila lives in the Maldon area and, as always, we were very pleased to see her and greatly value her experience and guidance through our Annual Meeting which is conducted strictly to the W.I. Constitution.

The meeting is an opportunity to say thank you to all those who give of their time freely with enthusiasm and vigour and contribute towards making our W.I. a vibrant and inclusive organisation and, despite the increase in subscriptions this year, our numbers continue to grow.

Why not come and join us, visitors, new members are always **very, very** welcome. Our programme for 2013 is very varied and designed to suit all tastes, one month perhaps learning how to make clay pots or arrange flowers the next month listening to tales of the Amish Community or the Floods of '53.. In between we meet for lunch, go to the theatre and knit blankets for the Ukraine with lots of knatter at the Seven Rivers Cheshire Home. There is something for all!

Back to the Annual Meeting---- after the business of reports, elections and thank you's, the members enjoyed "Puddings Galore", a sumptuous array of puddings washed down with a glass of rose wine, provided by members for members to taste and share.

Everyone agreed it was a wonderful and enjoyable way to end our A.G.M .

If you would like recipes for Chocolate Roulade, Lemon Cheesecake, Apple Cake, Pineapple Souffle'. Strawberry Pavlova please contact Jenny 230688 – mmm delicious.

*Jenny Nicholls*



## We Won!!

The Annual Constable Group Meeting was held this year at the Park Pavilion, Dovercourt on May 9<sup>th</sup>.

Nearly one hundred W.I. ladies gathered together to enjoy an evenings entertainment organised by the conveners for 2013, namely Dovercourt W.I.

The competition this year was entitled "The Beach" and each W.I had to design and create a scene using only five items. Great Bromley agreed to follow a theme of "Beach Safety" and included a protective straw hat, a cake in the shape of a lifebelt, a hand decorated "T" shirt, using the words "Slip Slap Stop" a sachet of 50+ sun cream and a hand made European Blue flag to declare the beach safe for 2013.

The Ladies of Great Bromley were delighted when their display was chosen as the winning exhibit and the cup was formally presented to our President.

Next year 2014, Great Bromley W.I. are the conveners – so watch this space!!

# IN THE GARDEN WITH KATE

**Well, it happened**, - I knew it would, I was waiting for it, but I was still taken by surprise. The recent warm spell last weekend caused chaos in my garden. Plants (but mostly weeds) started growing at tremendous speed. The grass appeared to lengthen before your very eyes, and nettles, ground elder and brambles are appearing in places I swear I weeded!

The good news is that the intentional plants seem to be taking off as well, though I must confess to being cautious as to planting out the bedding plants,- it has been quite chilly at night, so most of them are still being hardened off in the cold frame. My tomatoes, I am relieved to report, started growing at speed, and I am now the proud possessor of about 50 strong seedlings. As usual, far too many, but the surplus does benefit the plant sales at Ilex Farm and the St Helena stall in Briar road.

Plants are not the only things that appear to have woken from dormancy,- I have found two hedgehogs in the garden whilst tidying the compost heap, both apparently healthy



and unamused at being disturbed from their siesta, and bunnies who were sighted grazing on the lawn and thumbing their noses at me.

They completely ignore the rabbit trap (very sensibly) and

unfortunately my elderly springer spaniel is now far too slow to catch them!

I also found, when weeding, a couple of hens eggs in the undergrowth, courtesy of my neighbour's chickens! Sadly I had no idea how old they were so had to bin them.

The fruit tree blossom is quite spectacular this year, and if each flower translates into a fruit, my old russet tree is going to fall over, so this year I really must thin the apples leaving only one to two on each spur. I shall give the thinnings to my friend with chickens as I understand that these are popular.

In June, hopefully, you can start reaping the rewards of your labours. Asparagus can continue to be picked, and first baby carrots, beetroot and salads should be ready. Cauliflowers, celery and leeks can be planted in their growing positions, and climbing plants such as beans, clematis and roses need tying in. Greedy plants such as those of the cabbage family, beetroot, celery and leeks will benefit from regular feeding, as will tomatoes once the first truss appears. Potatoes need earthing up, and salad crops need to be planted every couple of weeks.

Above all, June is a time to enjoy the garden, and sit, Pimm's in hand, admiring your hard work!!!

*Kate Strowbridge*

## GT BROMLEY & DISTRICT CRICKET CLUB

### 100 Club Winners for April

- 1st. Mr. Sam Halsey
- 2nd. Mr. Mark Lamb (Snr)
- 3rd. Mrs. Nicky Saych



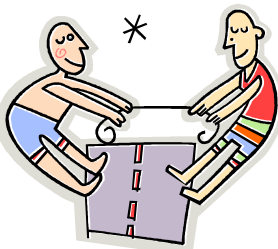
# TAILS FROM PRIMROSE FARM

The pigs and crops are now enjoying the better weather and the hedgerows are filling out and bright green. The recently planted trees are in full blossom and looking very picturesque. The Ash Die Back disease has not shown on the Ash trees which are all looking healthy at the moment. Bluebells are appearing at the base of the trees through the woodland walk and newts and tadpoles have been seen in the pond where we are very lucky to have a resident duck. There is plenty of young wildlife about, especially young rabbits. We think the resident kestrel has been hiding his prey in the new barn.

There has been lots of activity on the farm especially smoothing out the ruts in the trackways from the really muddy winter.

The farmers' markets are beginning to pick up slightly. Rowhedge market has certainly been revived, Wivenhoe is thriving, Brightlingsea is looking to move to the last Saturday in the month to attract weekend customers and be managed by the Brightlingsea Community Centre. The Farmers markets really have local produce: stallholders have grown it and can, when questioned, answer all your concerns about food miles and how it was produced.

Young Son is busy training for the Tug of War team with the Young Farmers. They are pulling at the Essex Young Farmers show later in the month, there is a technique to it!!!



The shop has been fairly busy with now the BBQ season coming.

Recipe for the summer.

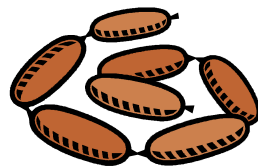
## WILTSHIRE SAUSAGE PLAIT

Serves 4-6

12oz (350g) British Pork sausage meat  
1 small diced cooking apple  
1 clove of crushed garlic  
2oz (50g) mature Cheddar cheese finely cubed or grated  
1 small chopped onion.  
4tbsp (50ml) chopped parsley (optional)  
Pepper  
1 x 8oz (225g) Ready made puff Pastry  
1 egg.

1 mix the apple, garlic, cheese onion and parsley with the sausage meat and add seasoning. Bind with the egg.

2 roll out the pastry to 10"x 6" and place filling along the centre. Make diagonal cuts in the pastry from the meat to the outside and fold these strips over the meat to form a plait.



Dampen the ends to stick. Glaze with a beaten egg. Place on a greased tray.

3 Cook in a preheated oven 220°C / 425°F / Gas mark 7 for 20 minutes, reduce heat to 180°C / 350°F / Gas mark 4 for a further 20-25 minutes until pastry is golden and the sausage meat is thoroughly cooked.

*Karen Moss*





## ESSEX POLICE

If you need to talk to me for any Police Community problems, you can contact me on 07967 466876, or 101 ex 487603 (free phone) or email me [rachael.oscroft@essex.pnn.police.uk](mailto:rachael.oscroft@essex.pnn.police.uk). Please note if you leave a message I will try to reply to your call the day I am next on duty.

*Rachael Oscroft PCSO 72834*

### Incidents for Gt Bromley for April 2013

**Criminal Damage** - Parsons Hill

**Nuisance Vehicle** - Harwich Road x2  
- motorbikes on field

## FRIENDSHIP CLUB

At the April Meeting members enjoyed a sing-along accompanied by Fred on the Piano.



The meal at The Cross Inn was enjoyed by all, and it is hoped this will be repeated in the future.

The May Meeting will be a talk by Mr Rigley and the competition a fan.

On 20th June Members will have a talk on Hedgehogs and the competition will be a small model animal.

*Sylvia Ward*

## THE DIFFERENCE EXPLAINED

### Wife's Diary:

Tonight, I thought my husband was acting strange. We had made plans to meet at a nice restaurant for dinner. I was shopping with my friends all day long, so I thought he was upset by the fact that I was a bit late, but he made no comment on it. Conversation wasn't flowing, so I suggested that we go somewhere quiet so we could talk. He agreed, but he didn't say much. I asked him what was wrong; He said, 'Nothing.' I asked him if it was my fault that he was upset. He said he wasn't upset, that it had nothing to do with me, and not to worry about it. On the way home, I told him that I loved him. He smiled slightly, and kept driving. I can't explain his behaviour I don't know why he didn't say, 'I love you, too.'

When we got home, I felt as if I had lost him completely, as if he wanted nothing to do with me anymore. He just sat there quietly, and watched TV. He continued to seem distant and absent. Finally, with silence all around us, I decided to go to bed. About 15 minutes later, he came to bed. But I still felt that he was distracted, and his thoughts were somewhere else. He fell asleep - I cried. I don't know what to do. I'm almost sure that his thoughts are with someone else. My life is a disaster.

### Husband's Diary:

The boat wouldn't start, can't figure it out.

# CHILDREN'S CRAFT PAGE

## FATHER'S DAY - 16TH JUNE

### DAD Picture Frame

A simple-to-make picture frame for Dad  
- a great gift for Father's Day.



Glue the photos onto the back of your frame. Write the names of the people on the backs of the photos.



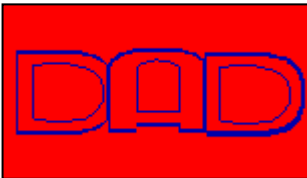
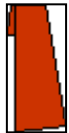
You need:

- Heavy paper
- 3 small photos
- Glue
- Scissors

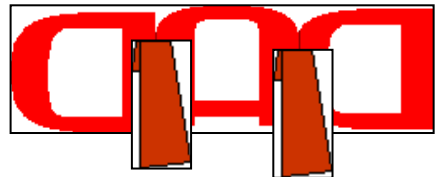


Cut out two almost-triangular pieces of heavy paper - they should be about the same length as your letters are high. These flaps will be attached to the back of the frame to keep it standing.

Fold over the top 1/2-inch of each flap.



Using large, bubbly letters, write "DAD" on a piece of heavy paper. Make sure the holes in the "D" and "A" are large enough to display your photos.



Glue the almost-triangular pieces of heavy paper to the back of the frame which will make it stand up.



Cut out the word "DAD."



Charity No. 1136038  
Company No. 7099441

# Little Dragons Pre-School

Great Bromley & Frating

Ofsted Inspected

Website: [www.littledragonspreschool.org](http://www.littledragonspreschool.org)

Email: [littledragonspreschool@gmail.com](mailto:littledragonspreschool@gmail.com)

Church Meadow Bungalow, Hall Road, Great Bromley CO7 7TR

Children 2-5 years. Monday – Friday 9am- 3.30pm (extended session available until 4.00pm)

Breakfast club for preschool age 8.00am -9.00am

Breakfast club for St George's children 8.00am-8.45am (and a walking bus to school)

After school club for St George's children 3.00pm – 5.30pm

For more details/ visits please contact us on 0785 7503103

We have had some fabulous weather this term and have swapped the coats and wellies for sun cream and sunhats. The children have been planting lots of seeds including tomatoes, cucumbers, spinach and some flowers too. They are keeping them watered and watching patiently for them to grow.



A small pond and log pile have been created by the children too and we are waiting for the wildlife to visit them. Our bird feeding station is regularly visited by different birds which we keep well stocked with food and water.

We have also developed a 'mud kitchen' comprising of a kitchen unit, lots of pots, pans and kitchen utensils to pour, mix and blend- the children have really enjoyed this, making lots of mud pies etc. providing great learning opportunities in all areas of the curriculum.

Week beginning 17<sup>th</sup> June is Dad's Week when we invite Dads to visit us in our sessions and join in the fun with their child. On Monday 24<sup>th</sup> June we will be again taking part in the 'Barnardo's Toddle'. Lots to look forward to.

### 'After School Club'

Opening times Mon- Fri 3.00pm-5.30pm.

Aged 2-11 years

A flexible collection service from St. George's School will be available from 3pm. This will include the collection of children from any after school activity that takes place after 3pm.

Fee: £2.20 per 30 mins

### Breakfast Club (see times above)

Children can choose from a range of healthy foods, including fresh fruit, yoghurts, cereal, toast and fresh juices. From £3.90.

Looking ahead, many parents will be starting to think about their child's placements for September, the new Autumn Term.

We are holding an 'Open Day' on Thursday 6<sup>th</sup> June 2pm- 4pm and 6pm -8pm for prospective new children and parents. Come along, see our new setting, meet the staff, we'd love to show you around and answer your questions.

We take children from the age of two years and offer a 'home visit' to families of children prior to them starting Pre-school. This gives the child the opportunity to meet their key-person in their own home, aiding the transition stage to pre-school. It also enables us to collect and share information in a confidential environment.

For further information or to arrange a visit to the setting please contact us on the above number.

### Dates for your diary:

Thursday 6<sup>th</sup> June Open Day for

prospective new children and parents

Monday 10<sup>th</sup> June Pre-school re-opens after half term break

Wednesday 12<sup>th</sup> June. Photographer - School leavers

Starting Monday 17<sup>th</sup> June. All week Dad's Week

Monday 24<sup>th</sup> June Barnardo's Toddle

# 2013 EVENTS

## JUNE

- 1-2 Little Bentley Hall Waterways and Garden Show - *see box for details*  
5 WI meeting, Village Hall, 7.30pm  
8 Social Coffee Morning, Lt Bromley church, 10.30am  
Race Night, Village Hall, 7.00pm  
12 Gt Bromley Parish Council meeting, Village Hall, 7.30pm  
20 Friendship Club meeting, Village Hall, 2.00pm  
22 5th Local Producers' Market, Lawford CofE Primary School's  
summer fair, 11.30am - 2:30pm  
28-30 Flower Festival, St George's church - *see box for details*  
Scarecrow Festival & Little Bromley in Bloom - *see boxes for  
details*  
30 Summer Fayre, Seven Rivers Cheshire Home, 1.00pm



## JULY

- 3 WI meeting, Village Hall, 7.30pm  
6 Poppy Appeal Dinner, Venture Centre, Lawford  
10 Gt Bromley Parish Council meeting, Village Hall, 7.30pm  
13 TENDRING HUNDRED SHOW *see www.tendringshow.co.uk*  
18 Friendship Club meeting, Village Hall, 2.00pm  
Lt Bromley Parish Council meeting, The Haywain, 7.30pm  
20-21 Art Show Weekend, Lt Bromley church  
27 Rock & Roll Night, Little Bromley

### **5<sup>th</sup> Local Producers' Market - Saturday 22 June 2013, 1130-1430hrs at Lawford C of E Primary School's Summer Fair**

Come and join us at our 5<sup>th</sup> Local Producer's Market, and enjoy the varied display of local produce and products, which this year will include:

- Steeple Poultry: Indian Runner Ducks and chicks
- Gina's Homemade Preserves
- Stour Valley Smokehouse
- Totham Bangers
- Nut House Shortbread
- Bumpstead Herbs
- Honey from Essex Beekeeping Association
- Gamekeeper's Daughter
- Chosan: natural health drink
- Daymen Hill Farm's Apple & Pear Juice
- Bowyer's Beef
- Candy Carnival Fudge
- Saffron Barr: natural soaps
- Choctails: alcoholic Belgian chocolates.

Plus all the fun of the summer fair: pony rides, teddy and bottle tombolas, 'Beat the Goalie', Rodeo & bouncy castles, music, grand raffle, majorettes, BBQ and Pimms & Beer tent plus much, much more.

All welcome ..... put the date in your diary now!

### **END OF SUMMER BALL**

Fundraising event for the upkeep and improvement of our Village Hall  
31<sup>ST</sup> August 730pm-Midnight  
Great Bromley Village Hall

#### ***Dress to Impress***

Hot autumn supper included - Fish & Chips, Chicken & chips, Sausage & chips, Veggie roll & chips, buttered roll  
(Bring your own condiments)

Order when booking or by 27<sup>TH</sup> JULY  
***Bring Your Own Drink and Summer***

#### ***Dessert***

#### ***Raffle Prizes***

**and a Prize for the Best Dessert  
Tickets £20**

**Available from**

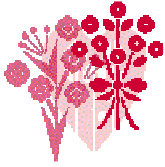
**07957 962788 07704 841272**

**01206 252332/233473**

**OR email**

**[gbromleyvillagehall@gmail.com](mailto:gbromleyvillagehall@gmail.com)**

**£5 deposit to reserve ticket**



# Flower Festival

St. George's Church,  
Great Bromley

## "Children's Books"

Friday 28th June 10.00 am – 5.00 pm  
Saturday 29th June 10.00 am – 5.00 pm  
Sunday 30th June 12 noon – 4.00 pm  
Refreshments, stalls, grand raffle and more!

Entry: £2 for adults

Also Scarecrow Festival on same theme in Little and Great Bromley,



## THE BROMLEYS' SCARECROW FESTIVAL AND COMPETITION

We would like to invite you to design and make a scarecrow in time for the Great Bromley Flower festival and Little Bromley in Bloom Weekend

On the 28<sup>th</sup>, 29<sup>th</sup> and 30<sup>th</sup> June.

The scarecrow should be a 'character from a children's book'

Fill in a registration form and return along with your £1 donation towards the PCC to be in our competition.

The forms will be available from 1<sup>st</sup> June at Great Bromley Church, the Cross Inn P.O., Primrose Park, Little Bromley Church entrance, the Haywain,

from Carol- c/o St. George's School and from Jenny at Fryerning, Hall Road.

For more details please contact:

Carol on 01206 395103 or Jenny on 01206 230688

## Friends of Little Bromley Church are hosting a Coffee Morning

on Saturday 8th June at 10.30 am.

Please come along particularly if you haven't visited this delightful church before. All welcome!



### Coming Events

20/21 July Art Show Weekend  
17 August Folk/Music Day  
6 October Harvest service  
21 December Carol Service 3.00pm

## VILLAGE HALL Events

### Race Night

8th June

7.00pm in the Village Hall  
*see page 27 for further details*

31st August **End of Summer Ball** (see box)

19th October **A Visiting Play**  
7th December **Christmas Fayre**

## Little Bromley in Bloom

Open to anyone living in Little Bromley - enter your garden in our Village Competition. All entries will be judged and the competition is open to gardens great or small - we're looking for bloom and colour - use your green fingers to make our



Village look more beautiful.

Entry is £1.00

Entry forms will be available at The Haywain, Little Bromley and Harlequin, Little Bromley.

Judging will take place to coincide with the Scarecrow festival on 28th, 29th and 30th June. This event is being sponsored by Heart's Delight who are kindly giving £50 Garden Vouchers to the winner. Email [Amenitiesgroup@gmail.com](mailto:Amenitiesgroup@gmail.com) for more details.

## Rock and Roll Night Saturday 27th July Little Bromley

A local rock and roll group - Foxy Rock - will be hosting an evening of dance - and giving lessons on how to jive etc - Hot buffet will be provided for a ticket price (to be decided)

# THE DOCTORS' SURGERY NEWS

## Ardleigh Surgery

The practice has recruited a replacement Practice Nurse, Tanya Holben, who started work at the surgery on the 21 May.

There is increasing pressure of demand for patients to see a GP, however, we have an experienced nursing team available five days a week. Rather than see a GP you may find it more appropriate to see a Nurse Practitioner, Practice Nurse or our Health Care Assistant (Practitioner Assistant).

Obviously you may choose to see whoever you wish but the following information may help you make your decision, if you have a serious or complex medical problem the General Practitioners (GPs) are best qualified to help.

**Sister Joy Harrison** is an experienced Nurse Practitioner with a Masters degree in Advanced Nursing Practice, she leads the nursing team.

Joy is experienced in assessing and treating **minor illnesses and minor injuries in children and adults**, she is an Independent Nurse Prescriber, can suture wounds, assess minor injuries and illnesses, send you for X-ray or arrange for a GP to see you if necessary.

Joy is also experienced in **managing long term conditions** (asthma, COPD, heart failure, hypertension (high blood pressure) and is our lead on managing **diabetes**).

**Sister Tanya Holben** is an experienced Practice Nurse with qualifications in

### Asthma and COPD

management.

Tanya is also our

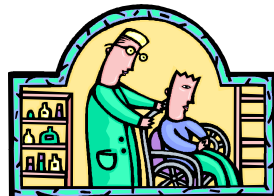
lead nurse in

**immunisations (child and travel).**

Tanya will be

developing her role further with ongoing education.

Joy and Tanya are trained and experienced in all aspects of wound care.



**Assistant Practitioner Jan Burgess** has developed her role and is now trained to do **all health checks** (new-patient, NHS, and elderly). Jan is also trained to carry out lung function tests (spirometry), and basic dressings with the supervision of the Nursing Sisters. Jan is experienced in ear irrigation for earwax build up, and trained to do routine flu, pneumonia and B12 injections. Jan performs all **smoking cessation support and weight management**. Jan will be developing her role further with ongoing education.

**Phlebotomist Dallas Powell**, is available four mornings at Ardleigh surgery and one morning at Dedham branch surgery (Wednesday), she is trained and experienced in carrying out all **blood tests**.

*Fred Merrin, Practice Manager, Ardleigh Surgery*



### GREAT BROMLEY POST OFFICE at The Cross Inn

Ardleigh Road, Great Bromley CO7 7TL

Telephone: 01206 231073

Mon/Tues: 9.30am-2.00pm Wed/Thurs/Fri: 10.00am - 2.00pm

Sat: 9.00am-midday

- Please note that there is now a wide selection of cards and wrapping paper available.
- A dry cleaning service is also available.

**Please ask for details at the counter.**

# THE DOCTORS' SURGERY NEWS

## Gt Bentley Surgery

I mentioned last month the importance of children being fully protected against measles by the MMR jab. Measles is in the news again with doubts being expressed about achieving the aim of eliminating the disease throughout Europe by 2015.

Experts still believe that it could be completely eliminated worldwide – just as smallpox was in the 1980s – but only if the take-up of the vaccine is high enough.

At the moment, because of inadequate take-up of MMR, Britain is a stumbling-block to this lofty aim along with countries such as Turkey, Ukraine and Romania. Surely we can do better? If, over the next couple of years, everyone takes responsibility for their role in getting rid of measles for good it could be done. Then there would be one less disease to vaccinate against and a lot fewer damaged children in the world.

By coincidence, the government has very recently announced two welcome new additions to the childhood immunisations schedule.

Firstly, from July, a campaign will start to vaccinate babies against rotavirus, which has been in the news recently as a very common and potentially serious large bowel infection. A course of two oral doses of vaccine will be offered, the first at two months and the second

four weeks later. These tie in with the first and second routine childhood immunisations, so they don't entail an extra trip to the surgery.

The second change is the gradual extension of flu immunisation to all children aged two to sixteen years. Full details have not yet been announced, but it starts in the autumn of 2013 when flu jabs will be

offered to a limited age range of pre-school-aged children. Other age groups will be included over the next few years.

Parents – please do take advantage of these new vaccines' availability. Like measles, rotavirus and flu are both nasty diseases which can have serious consequences, so they are well worth avoiding.

There is also a change that affects older people, who in future will be offered vaccination against shingles as they turn seventy. This campaign, plus a "catch-up" exercise for people aged 71-79 will start in September this year.

I must admit, I had no idea before details of this campaign came out how serious shingles can be for older people. There are pretty hair-raising details on the "NHS Choices" website about a number of complications that can arise, some of them extremely painful, even needing hospitalisation in certain cases. The jab looks a very good option to me, so when it is offered I would certainly take advantage of it.

Finally for this month, the pharmacy staff have asked me to give again their e-mail address so that patients wanting the next batch of their Repeat Dispensing medication can request it direct. The address, which somehow got corrupted in some magazines when I gave it a couple of months ago, is [thegreenpharmacy@intrapharm.com](mailto:thegreenpharmacy@intrapharm.com). Please use e-mail rather than trying to telephone your request otherwise the 'phone lines just get overwhelmed.



### The Great British Fish & Chips Supper

*supporting Spinal Injuries Association*

Friday 17th May, 2013

To request a fundraising pack:

Call: 0845 0714350

Email: [fundraising@siafishandchips.co.uk](mailto:fundraising@siafishandchips.co.uk)

Visit: [www.siafishandchips.co.uk](http://www.siafishandchips.co.uk)

# BROMLEY MESSENGER ACCOUNTS

## BROMLEY MESSENGER Treasurer's Report - unaudited - April 2013

Statement of Accounts 2011/2012

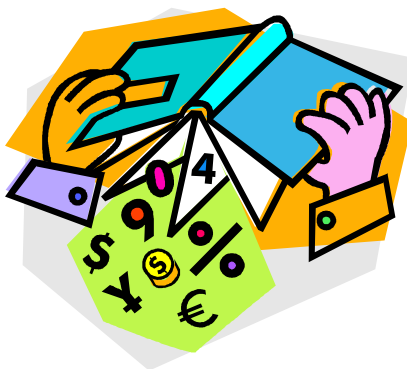
<b>Income</b>	<b>2012/2013</b>	<b>2011/2012</b>
	£	£
Donations	96.40	63.30 (amended)
Advertisements	3,467.00	3,333.00 (amended)
Sponsorship	920.00	000.00 (amended)
Inserts	50.00	25.00 (amended)
	<hr/>	<hr/>
	4,533.40	3,421.30
<b>Expenditure</b>		
Printing	3,641.27	3,958.29
Expenses/Postage	274.33	274.97 (amended)
Donations	00.00	1,000.00 (amended)
Inserts	125.00	
	<hr/>	<hr/>
	4,040.60	5,233.26 (amended)
Surplus/(Deficit)	492.80	(1,811.96) (amended)
	<hr/>	<hr/>
	4,172.58	3,817.30

Advertising revenue has increased during the year, to the point that we once again have a waiting list of prospective advertisers. As predicted, the finances show a return to surplus, although it should be noted that this figure includes early payment by some sponsors (£264).

Owen Blowers has kindly volunteered to audit our accounts and I have given him the last two years' books for him to work on.

Sincere thanks go to Leonie Henderson, who does a wonderful job of compiling and editing our magazine, and to Ann Fairley together with her assistants, who distribute the magazine throughout the Bromleys. We also thank all those who contribute articles and reports: Natalie Smith, the proofreader, and the advertisers and sponsors - all of whom help to make the Bromley Messenger such a successful publication

*Richard Perry, Treasurer*







# VILLAGE HALL TRUSTEES

The Village Hall AGM has happened and we have the new committee

in place. Well done to Mike Corduff as our new Chairman, to Filipe Farne who has co opted onto the management committee and to Richard Lawson who has joined as the Cricket Club rep.

We have said goodbye to Fred who has been our Chairman for the past six years and to Pip Allum who has been the Cricket Club rep for the last year. A nice glass of wine was drunk after the meeting by all who attended. Thanks for that Fred.

It is the new Committee's plan to achieve more bookings for the Hall so as to fund the Hall's finances from more commercial bookings. This will lessen the pressure on the fund raising. To this end all committee members have been asked to consider any ideas for the next meeting on May 14th.

The New Village Hall Committee consists of :- Mike Corduff (Chair), Martin Frostick (Vice Chair), Jackie Terry (Treasurer), David Beech (Secretary General), Jacquie Terry (Secretary Minutes), Mary Fawcett (Bookings) Filipe Farne (PR and Sales), Gill Christmas, Jayne Bates, Mary Hart, Kate Strowbridge and Richard Lawson.

A Race Night is now happening on June 8<sup>th</sup>. Sponsors can still book their races for £30 and horses can be bought too. Please talk to Filipe Farne soon as the races were sponsored very quickly last time. At this point only two races are left to sponsor out of the original eight, so if you are interested call Filipe NOW. Bring your own food and drink, doors open at 7pm and entrance fee is £1. Mary and Jackie have organised a Summer Ball with live music and hot food on August 31st. "Dress to Impress" tickets are on sale now for £20 per person and are available from Jackie (Treasurer) and Mary (Bookings) - See front cover of Messenger for contact details. The Murder Mystery Night is still being investigated which I am looking forward to. Film Nights have taken a forward step with the

help of a non for profit scheme that other Village Halls use. Watch this space for further details. The first of the Visiting Plays is booked for October 19th. The Christmas Fayre is being held on the first Saturday in December.

A number of groups in our Village use the Hall to hold their functions from the Cricket Club to the W.I. The loss of the Playgroup has resulted in us having spare capacity so if you are thinking of a party, a celebration or any event please check out our Village Hall. Prices are very competitive with a Village resident being able to hire the main hall for as little as £14.00 per hour.

The full prices per hour are:- Village users, Main Hall £14, Millennium Hall £8, Committee Room £6, Small Hall £5, Kitchen (in isolation, non commercial) £5, Main and Millennium Hall £20

Non Village resident Main Hall £16.50, Millennium Hall £9.50, Committee Room £7, Small Hall £6, Kitchen (in isolation, non commercial) £6, Main and Millennium Hall £23.

Over the last few years it has been upgraded to one of the better halls in the area with the exterior painting, new kitchen, new toilets, interior painting, floors sealed, new cleaning regime, new heating controls and a large de-clutter. Details of the Hall are on the web site or if you have not been down to the hall recently why not take a look and see if we can help you. Mary Fawcett is in charge of our bookings and her details are on the inside page of The Bromley Messenger.

The extensive work to the toilets has finished or will have done by the time you are reading this. A great job. Well done to Andy Terry and Ivan for a job well done indeed.

That's all for now. As always thank you for your support. Let's all make the most of Great Bromley Village Hall in 2013.

Next meeting Tuesday 9th July at **8:00pm**.. As always all welcome.

.  
*David Beech*

# VENTURE CENTRE, LAWFORD

## COLCHESTER GUARDS CLUB POPPY APPEAL CHARITY FUNDRAISER

The Colchester Guards Club is holding a Poppy Appeal Charity Fundraiser Dinner & Dance on Saturday 6th July, at The Venture Centre Bromley Road, Lawford. All profits from this function will go to the Poppy Appeal.

The evening will consist of a three-course meal at £30.00 per head plus three-prize raffle draws followed by dancing entertainment. A vegetarian option can be arranged if required.

The venue will accommodate up to one hundred guests. Those booking with friends or corporate guests should request all the tickets at the same time. Tables are of 8 covers although this can be increased to 10 on a limited number of tables if needed.

Dress Code: Ladies: Evening or Cocktail Dresses

Gents: Black Tie or Dark Lounge Suits & Tie (decorations may be worn)

Cost: £30 per head.

Time: 1900 for 1930 hrs.

**There will be 3 Prize Draws:** Draw 1 for Raffle Tickets sold over the preceding 3 months.

Draw for Raffle Tickets Sold On the Night. Draw for the Prize Ticket.

*Please ensure you bring your tickets with you*

Tickets are available either through the Clubs official web site:

[www.colchesterguardsclub.co.uk](http://www.colchesterguardsclub.co.uk) or by contacting the Club's Chairman, Bob Naden on 01255 815140.

# BRANTHAM LEISURE CENTRE

**Brantham Cricket Club**  
is holding a

**General Knowledge QUIZ NIGHT**  
to help with their fundraising for the coming season.

Saturday 15<sup>th</sup> June

7.30pm at **Brantham Leisure Centre**

The bar will be open for refreshments !

Teams of up to 6 people -Tickets £7 per person including

Burger/cheese burger/sausage + chips

Please contact Debbie Pembroke on 07711 253525 to book a team (and order your food)

**Brantham 5 Mile & Junior Fun Run**

on Friday 19th July 2013.

Junior race starts at 7.00pm and Senior race starts at 7.30pm - Junior race runners must be 14years old or under and Seniors 15 +

More information and applications forms can be downloaded from Brantham Leisure Centre web page

[www.branthamlc.co.uk](http://www.branthamlc.co.uk) and go to the events tab for the application form

Any queries please contact Janet Webb 01206 398027 or Phil Wainwright 07787591748

Friends of Elmstead Church Art Exhibition  
15th and 16th June in Elmstead Church  
Pictures for sale at reasonable prices by Essex artists

Saturday 10.30am-5.30pm

Sunday 12 noon-5.30pm

Ploughman lunches. Tea and coffee Books and home made cakes for sale



## Don't Let Wasps Ruin Your Summer

The sun finally comes out, and along with it come the dreaded wasps. Wasps can be a real nuisance in the summer months, spoiling barbecues and picnics and making you feel uneasy and wary when you are trying to relax in the garden – especially if you have young children running around.

Some wasps feed on flower nectar so if you have a lot of flowers in your garden you may find wasps are attracted to your home for that reason. Wasps also feed on other insects such as green fly and a swarm of wasps can strip a dead bird of its flesh in a matter of hours.

It is generally towards the end of the summer that wasps become a real nuisance to people as their feeding habits change and they seek sweeter foods sources.

### Why do wasps swarm?

It is estimated that there can be as many as 1000 wasp nests per square mile. Wasps from different nests are competing for food for survival and will fight for that food. A lone wasp cannot exploit a food source if it is also being attacked by competing wasps.

Therefore, a lone scouting wasp will bring back its colleagues from the nest to participate in feeding. The swarm will continue to feed from an identified food source until that food is exhausted.

### Spheksophobia

Many people are scared of wasps, perhaps relating the sight and sound to an unpleasant childhood experience when they were stung and remembering it was very painful.

Others are scared of wasps for a very different reason; in some people a wasp's sting can provoke a severe allergic reaction and send them into what's called 'anaphylactic shock' – a sudden, almost instantaneous and potentially very serious allergic reaction that can involve the whole body.

Due to their aggressive reputation many people often forget that wasps also spread disease in much the same way as flies, picking up bacteria from faecal matter, which they then transport onto the food that they

land on.

### Making your garden a safe haven

Through their stinging and generally annoying behaviour, wasps manage to earn themselves a pretty bad press, but it is important to remember that they are a vital part of your garden's natural balance and the eco system as a whole. They feed on aphids and small insects that might otherwise wreak havoc amongst your plants.

That said, having a garden full of wasps is no fun for anyone so, to encourage your wasps to go elsewhere follow these simple tips:

- Ensure that dustbins have tight-fitting lids, and keep them closed!

- Keep food and drinks covered

- Pack away unfinished foods, clear up food debris and wipe down spillages

- Clear fallen fruit from your garden

- A professional pest controller can advise on the effective use of outdoor wasp traps

- If you think you have a wasp nest in your home or garden arrange to have it removed professionally before it becomes a nuisance

### And what not to do!

Wasp venom contains an alarm pheromone.

This means that when a wasp has stung something or been killed, other wasps will become more aggressive.

So remember, there may be a 'sting in the tail' for you upon pelting that pesky wasp with your rolled-up newspaper.

*There is lots more information about problem wasps on our website*

*[www.eandspestsolutions.co.uk](http://www.eandspestsolutions.co.uk) or if you prefer to speak to a human, please feel free to contact us for further advice or assistance on 01473 328092 or 07979 301334.*

Nick Collinson, Owner/  
Manager - Essex &  
Suffolk Pest Solutions  
Ltd



# THANKS



## Rogation Sunday 5<sup>th</sup> May - Park Farm

By kind permission of Ann & Henry Fairley the members of our church gathered for a service led by Rev Bryan Snaith. The Farmhouse, farmyard, animals and crops were blessed in a traditional rogation tide service. A sumptuous "bring and share" lunch followed eaten in the garden of the farmhouse. Thank you Henry and Ann for sharing your house with us on a beautiful spring day.

## NEW VANS FOR TENDRING CARELINE

Tendring Careline, the emergency lifeline service operated by Tendring District Council, has recently taken delivery of three new vans which you should start to see around the local community. The vans are part of an economy drive that is designed to make the service more efficient. They offer better fuel economy than the previous vans and are also fitted with trackers so that the Control Centre can check where they are when there is an emergency and ensure they send the van that is nearest. Tendring Careline has been operating for



25 years and currently offers support to around 3000 Tendring residents allowing them to live independently in their own homes for longer. To find out more about the service you can call us on 01255 222727.

## DISABILITY ADVICE SURGERY

Disability Advice Surgery is being hosted at Brantham Leisure Centre every Thursday from 10.00am - 4.00pm starting on the 28th March 2013. To make an appointment please phone 01473 217313. Although this is a Suffolk group they are more than happy to have people from the surrounding Tendring area within a 15 mile radius of Brantham

### ABOUT US

The Ipswich Disabled Advice Bureau is a local, independent charity, established in the 1970s as a small drop-in centre, that became a registered charity in 1981 and a not-for-profit company in 1996. We work to support people with any form of disability, their carers, families and others in related fields, who live in Ipswich and the surrounding area. We provide free and confidential advice, information, advocacy and services to individuals with disabilities and we aim to provide advice and information to organisations and agencies serving people with disabilities.

Advice areas include – arrange of benefits including:-  
Employment and Support Allowance, Attendance Allowance,  
Disability Living Allowance/Personal Independence Plans (PIPs)  
Carers' Allowance, Job Seekers Allowance, Working Tax Credit,  
Housing Benefit, Council Tax Benefit, Industrial Injuries Benefit,  
Child Tax Credits and Child Benefit, Universal Credits  
ALSO: Community Care Assessments + Grants, Suffolk  
Independent Living, Housing/Adaptations, Equipment, Transport incl. applying for Blue Badges, Credit Union, Accessible Holidays + Leisure, Education and dyslexia.  
We also work to improve statutory services, educate public opinion and co-operate with similar bodies.

Friends of Little Bromley Church

**Saturday 8th June**

**Little Bromley Village Coffee Morning**

10.30am - 12 noon

at the church

Admission free

Book fair, pottery exhibition, refreshments

Donations welcome for The Churches  
Conservation Trust



## **THE BROMLEYS' SCARECROW FESTIVAL AND COMPETITION**

WE WOULD LIKE TO INVITE YOU TO DESIGN AND MAKE A SCARECROW IN TIME  
FOR THE

GREAT BROMLEY FLOWER FESTIVAL AND  
LITTLE BROMLEY IN BLOOM WEEKEND

**On the 28<sup>th</sup>, 29<sup>th</sup> and 30<sup>th</sup> June.**

**The scarecrow should be a  
'character from a children's book'**

Fill in a registration form and return along with your £1 donation towards the PCC to be  
in our competition.

The forms will be available from 1<sup>st</sup> June at  
Great Bromley Church, the Cross Inn P.O., Primrose Park, Little Bromley Church  
entrance, the Haywain,  
from Carol- c/o St. George's School and  
from Jenny at Fryerning, Hall Road.

For more details please contact:  
Carol on 01206 395103 or Jenny on 01206 230688

## CHURCH JOTTINGS

The two P.C.C.s of the Ardleigh and Bromley Benefice met together expecting to hear plans the Diocese and Deanery have for us in the future.

We were rather disappointed to discover that nothing has been decided! We continue in a state of interregnum until such time as a way forward is found. We shall be working with Ardleigh, Lawford, Dedham and Elmstead in what is now called the "Western Unit".

As before if you need a priest or just a friend to speak to please phone Ann on 250229 or Jenny on 230688.

Our next meeting with Canon Peter Mann the Rural Dean is on June 13<sup>th</sup>.

Thank you everyone for your help, support and words of encouragement at this rather difficult time.

Best wishes  
*Jenny Nicholls*

## FATHER ROBERT FARRELL'S FAREWELL 14TH APRIL 2013

As a churchwarden of St George's church, Great Bromley, I would like to say a few words that come to mind.

Father Robert's Induction took place on 18th November, 2008 and the church was full, with friends coming from several of the previous churches where he had been an Incumbent.

We knew very little about him except that he was a widower and had a son named Adam who was going to Oxford and they were moving here from Thorpe Bay.

Father Robert knew very little about our village or us. But he learnt very quickly that ours was not a sleepy village, but had a very active church school, W.I., Cricket Club, Friendship Club and a Village Hall where lots of events take place and a church community making demands upon his valuable time of visiting the sick and giving support where necessary.

We learnt of his interest in cooking, making Welsh cakes and treating us after a P.C.C. meeting, making Green Tomato Chutney when there was a glut of tomatoes and he was shortly to go on holiday.

We enjoyed his love of music and his ability to play the organ, a great asset at any time to assist in a service.

Father Robert can now appreciate how important weather is to the farming community, having taken the Rogationtide service at Ardleigh, Little Bromley and Great Bromley visiting farms, blessing cows and calves, mares and foals, sheep and poultry plus all the arable crops of barley, wheat, potatoes and sugar beet.

The wonderful service for his silver anniversary to commemorate 25 years since he was ordained and the party held in the Rectory garden afterwards with lovely weather blessed by Bishop Christopher. We gave him a beautiful stole to remember this very special day in his life. We hope you will remember us when you wear it at any services you conduct in the future during your retirement.

Thank you for your help and guidance over the past 4½ years. Many of our lives have been enriched and we will miss your presence in our midst. Thank you, Ed, for being so supportive to Father Robert and carrying out all your duties at the altar as an Accolight. For being such a good sport and the laughs we have shared over our love of chocolate biscuits!

We wish him a long, happy, healthy retirement.

*Ann Fairley*

# ST. GEORGE THE MARTYR, GREAT BROMLEY

*united with St. Mary the Virgin, Ardleigh*



## Church of England Services

### June

<b>Sunday 2nd</b>		<b>1st Sunday after Trinity</b>	
	<b>60th Anniversary</b>	<b>of Coronation of Her Majesty Queen Elizabeth II</b>	
	8.00am	Eucharist	<i>St. George the Martyr</i>
	10.30am	Parish Eucharist <i>with Holy Baptism</i>	<i>St. Mary the Virgin</i>
	6.30pm	Evensong	<i>St. George the Martyr</i>
<b>Sunday 9th</b>		<b>2nd Sunday after Trinity</b>	
	8.00am	Eucharist	<i>St. Mary the Virgin</i>
	10.30am	The Parish Eucharist	<i>St. George the Martyr</i>
	6.30pm	Evensong	<i>St. Mary the Virgin</i>
<b>Sunday 16th</b>		<b>3rd Sunday after Trinity</b>	
	8.00am	Eucharist	<i>St. George the Martyr</i>
	10.30am	Parish Eucharist	<i>St. Mary the Virgin</i>
<b>Sunday 23rd</b>		<b>4th Sunday after Trinity</b>	
	8.00am	Eucharist	<i>St. Mary the Virgin</i>
	10.30am	The Parish Eucharist	<i>St. George the Martyr</i>
	6.30pm	Evensong	<i>St. Mary the Virgin</i>
<b>28th-30th</b>		<b>Flower Festival</b>	<i>St. George the Martyr</i>
		<i>See page 19 for full details</i>	
<b>Sunday 30th</b>		<b>5th Sunday after Trinity</b>	
	8.00am	Eucharist	<i>St. George the Martyr</i>
	10.30am	Parish Eucharist	<i>St. Mary the Virgin</i>
	6.00pm	Songs of Praise	<i>St. George the Martyr</i>
		<i>Mrs Laura Garnham will lead our service of praise</i>	

**Holy Communion** every Friday at 11.00am at Seven Rivers, Hall Road, Great Bromley.