

THE BROMLEY MESSENGER

NOVEMBER 2016

Volume 31 No 8



SAVE THE BROMLEY CROSS

See report on page 6

THE FIRST PAGE

There are two important things to say this month.

First. As from the combined December / January issue The Bromley Messenger will henceforth include news and views from Little Bentley. They first approached us some weeks ago when they found themselves without a magazine. We have all met up and sorted ourselves out so, with much pleasure, we will welcome Little Bentley next month into our pages. A decision as to our name was made and in the future we will be called 'The Messenger' - most people abbreviate it to that anyway. I have also changed the email address as I think it will eventually confuse if we leave the word 'Bromley' in it. So it is now the1986messenger@gmail.com. 1986 within the email address reflects our beginnings during that year as we are 30 years old officially this year although The Messenger was trialled during the year before that. Please amend your email address books.

Secondly, The Messenger relies upon our Sponsors and Advertisers to keep us going and enable us to send this magazine to you all free of charge each month and on your behalf I would like to thank them for their support of our magazine and trust that whenever you contact them you will let them know you saw their name in The Messenger.

Our advertising space is given only to those who operate within a 15 mile radius of our villages. This is done on purpose as Word of Mouth is important and we expect good service from our advertisers as a result. We

all know how a village grapevine works! However, we have been informed that one of our residents may have been overcharged for work carried out. If you feel this happens to you please let us know. I do keep a note of praise and complaints so should you ever want to check with me before first using someone please do get in contact. I have to say with the present set of advertisers this is the only complaint on the list. Advertisers are made aware when applying for a space that we accept only those within the given radius; they should all be aware that close knit communities *do* talk to each other and who definitely complain as well as recommend!

November is the month in which we annually remember all those who have died in conflict. Also those who have been wounded as a result of battle. Continuing with our 'real time 100 years on' obituaries of WWI Hugh tells us of Alfred Easdel who was killed in action on 21st November 1916, two days after the official end of the Battle of the Somme. He was 26.

There is still so much war, hatred and unrest around the world at present and according to a question I Googled on the internet the world has not been at peace **at all** in the past 100 years. There have actually been no days when there has not been some kind of war occurring some place on earth. What a horrendous thought and I can only hope that perhaps next year that particular statistic no longer holds correct.

Leonie

ALFRED GEORGE EASELL (1890-1916)

Alfred George Easdel was born during the summer of 1890 in Ardleigh, the son of James and Lydia Easdel. James was an Agricultural Labourer born in Ardleigh who married Lydia Simmons (originally from Chislehurst in Kent) in 1882 or 1883. The Easdel family lived at Park Corner in Ardleigh before moving to Meadow Cottage in Little Bromley at some point between 1901 and 1903.

Alfred joined the Army as a Regular prior to April 1911. In fact, the Census taken at that date shows him not only as a Gunner in the Royal Field Artillery, but also as a patient at a Military Hospital near Portsmouth.

Alfred had twelve siblings, one of which - his elder brother Arthur - had joined the Royal Field Artillery (RFA) a short time before him. It may have been this that prompted Alfred to select that same regiment when he enlisted. For some unknown reason, both brothers joined up using the surname of Easdel, and not Easdel.

Alfred disembarked in France at the port of Le Havre on 6th November 1914, as part of the 45th Brigade, RFA. Nine days after entering France they were in action, south of the town of Armentieres.

In the next two years, the Brigade saw action at various locations on the Western Front, including involvement in the battles of Neuve Chapelle, Aubers Ridge, and the early stages of the Battle of the Somme.

They returned to the Somme at the end of October 1916, in the later stages of the Battle. By this time Alfred was serving as a Corporal in the Brigade's 1st Battery: A Battery at full strength being made up of six guns, and approximately 200 men.

The 1st Battery were positioned approximately midway between the villages

of Ginchy and Morval, from where their 18 pounder guns could support the infantry in the front line, less than two miles away.

Alfred was killed in action on 21st November 1916, two days after the official end of the Battle of the Somme. The Unit's War Diary for that day simply states "Quiet Day. Enemy artillery inactive. Casualties - 1st Battery: 1 Corporal and 1 Gunner killed. 2 horses killed."

Alfred Easdel was 26 years old. He is commemorated on Face A of Pier 1 on the Thiepval Memorial to the Missing of the Somme.

M.A.

Peter Herring tells me that Meadow Cottage was on the Little Bromley side of the Brook in Barlon Road. Peter's school friend George Notley and his sister lived there, and their father worked at Little Bromley Hall, so the Easdells probably did as well. The cottage was later demolished and there is a new house there now. If you have contact with any of the Easdel / Easdel family or Notley family I would be glad to hear.

Hugh Frostick.



ST. GEORGE'S (C OF E) SCHOOL, GT. BROMLEY

Telephone: 01206 230305

NSPCC Morning - E-Safety

Two ladies from the NSPCC visited school to encourage the children to 'Speak Out and Stay Safe'. Pupils did a great job of collecting people's worries in a sack and the ladies then talked about the ways in which children could deal with those worries. The main message was to talk to a trusted adult in the first instance but the children were also taught the 'Childline' phone number to use if they felt they needed the support of someone who would treat their concerns in a more confidential manner.



Cross Country

We sent two teams to a Cross Country running competition in Wix. The morning saw Years 3 and 4 from the Small School Cluster schools gathered to compete. Our team consisted of Brandon Towner, Emelia Esposito, Eve Barnham, Maria Lee, Thomas Stacey and Charlie Harden. We had to run half a mile through woods and fields. Thomas led from the start and was placed first in the boy's race. The rest of the team also did extremely well, gaining second place

overall.

The afternoon saw ten schools gathered from the Harwich Sports Association schools. We had to run one and a half miles through woods, across bridges and grassy fields.

Apprehensively, we waited for the start having walked the course to ensure we knew what hazards to look out for. Jostling for position at the start, we were off. Leilah and another girl kept swapping places at the front but Leilah used her great tactical knowledge to finish first. Great performances again from everyone meant that our Year 5/6 team came second overall, a fantastic result against much bigger schools. Well done to Leilah Sutherland, Olivia Harden, Grace Black, Nick Breeden, Mason Miller and Sam Pasque.

by Mason Miller and Sam Pasque

Fire Swim

St. George's school took part in the Fire Swim at Leisure World in Colchester. The atmosphere was amazing as the speakers pounded out the best hits of all time. There were 6 lanes and they all did brilliantly.

Lane 5 beat the high score. Everyone who took part was given medals. School pupils were given a letter and older family and friends were allowed to take part as well. It was a great day and every one enjoyed it.
by Sophie Allam and Oscar Brincklow.



Little Dragons Pre-School - Great Bromley & Frating

Church Meadow Bungalow, Hall Road, Great Bromley CO7 7TR
Ofsted Inspected

Website: www.littledragonspreschool.org
Email: littledragonspreschool@gmail.com



OUTSTANDING OFSTED INSPECTED

BREAKFAST AND AFTER SCHOOL CLUBS- PLACES AVAILABLE

Tel: 01206 231823/ 07857 503103

We are very flexible and are happy to take children for the occasional session and times to suit your situation.

If you require further information please call us on the numbers above or pop in to see us.

Over the last few weeks we have been looking at the changing season and the children have enjoyed exploring outside for signs of autumn.

The children continue to stock our bird table regularly and watch keenly for the birds to visit. We have also been leaving food out in the hope that we may attract a hedgehog to overwinter in our little wooden house.

We are holding a 'Mums Week' on 7th November and 'Dads Week' on 5th December when we invite parents to join us in our sessions and have fun with their children.

BABY DRAGONS

Our Parent and Toddler group is running on Fridays at Little Dragons, Church Meadow Bungalow. The session runs from 9.00 am-10.30am, the price of £2.50 will include tea/coffee and children's snack. The group will run term time only, all welcome.

PLEASE SAVE YOUR BISCUIT WRAPPERS AND BOTTLE TRIGGER HEADS

We have registered with Terracycle and are currently collecting biscuit wrappers and plastic bottle trigger heads and caps from washing up bottles. These we send away and are then paid according to the weight. So please ask friends and family to help us collect as many as possible.

We take children from the age of two years and offer a 'home visit' to families of children prior to them starting Pre-school. This gives the child the opportunity to meet their key-person in their own home, aiding the transition stage to pre-school. It also enables us to collect and share information in a confidential environment.

For further information or to arrange a visit to the setting please contact us on the above number.

Party Table and Chair Hire

Having a party for Pre-School children?

We can offer 4 perfectly sized tables & 20 chairs.

Deposit only £10 Tables only £5.00 each

Chairs Only £1.00 each

Collection Only - Contact us: Tel: 07857

503103 Email:

littledragonspreschool@gmail.com

Dates for Diary:

Mon 7th November Photographer visiting

Mon 7th November Mums Week

Mon 5th December Dads Week

THANKS

Vintage Cream Tea Macmillan and East Anglian Hospice.

A very successful afternoon on 2nd Oct. Thank you all for your support, without your help we would not have raised an Amazing **£1431.65** plus a Halifax donation of **£500.00** so an amazing **£1931.65**.

Thank you all once again for your support

Linda Pinhey



SAVE THE BROMLEY CROSS

What an amazing weekend! Even though we don't own the Cross Inn (yet), we were given permission to open for the weekend with a temporary licence, and what a weekend it turned out to be. Thank you all.

We started on Friday 7th October with an interview on Dave Monk's Show on BBC Radio Essex, then with the local press in attendance, Beryl Hurst, the Cross Inn's longest regular customer, unveiled our pint glass share-o-meter and we started selling shares. And what a success that turned out to be. With an hour or two we had £60,000 invested and we were able to start filling the share-o-meter. And our volunteer staff did a great job coping with the rush in the bar too.

Saturday night was even busier and the fish and chip van was a great success. There was a good turn out on Sunday lunchtime too, both drinkers and investors, meaning we were able to fill the share-o-meter to £90,000, getting close to 50% of our £210,000 target. A huge thank you to our volunteers, supporters, patrons and investors. It would be nothing without you.

The only disappointment came from BBC Look East. We were supposed to be live on BBC1 on the Friday evening. The BBC reporter was in the Cross, and they'd even

done some filming, when they were called away to a huge fire at a paper factory in Kings Lynn. I hope we have better luck next time (and I think there will be a next time).

We have until 19th November to reach our target, so we're going to have a busy six weeks. We plan to open the Cross every other weekend, assuming we get permission, so we'll be open Friday 4th and Saturday 5th November, 6:30 -11. On Saturday 5th will be celebrating the anniversary of the only honourable person to enter parliament, with a Bangers & Fizz night (Primrose Farm sausages and Prosecco). Then we'll be open Sunday lunchtime. We open again Friday 18th and Saturday 19th November too. Saturday will either be a celebration or a wake. Our final session will be Sunday lunchtime 12-3 on 20th, but I really hope it's not our last session ever.

You can invest in the Cross Inn online at <http://www.crowdfunder.co.uk/save-the-bromley-cross> or via our website <http://www.greatbromleycross.org.uk/shares>

Jim Craddock, Secretary
Save The Bromley Cross
(SaveTheBromleyCross@yahoo.co.uk)

VOLUNTEERING IN GREAT BROMLEY

Great Bromley is quite a small village, but very spread out. Many people feel disconnected from each other as geographically the village is in three parts; the Hare Green end, the village centre by the church, and The Bromley Cross area. However, we are one village, with many wonderful features and people. One of the ways that we can work together as a community is to volunteer to help at various events. These range from the more formal, eg parish council, through helping with the many clubs and associations in the village, to assisting in the bi-annual litter pick when

we attempt to keep the increasing tide of litter at bay. It is a great way to meet people, and although I am very aware that people lead busy lives, it can be for as many hours as you wish. In the first instance, if you would like to help your village, please contact the parish clerk at clerk@greatbromley.org.uk or drop us a letter through our box at the village hall. Alternatively, contact the club or association directly, their contact details are all in this booklet. We would love to see you!

Owen Blowers

COFFEE BREAK NUTRITION with Suzanne Abbott

THE IMPORTANCE OF WATER

Our bodies contain approximately 60% of water. This figure fluctuates with age as well as body mass.

Water serves multiple purposes:

It builds cells; Regulates the body's temperature by sweating or respiration; It's needed for breaking down proteins and carbohydrates in food; It is the most important element in saliva – we wouldn't be able to swallow food without it; It's needed for lubricating the joints; It insulates and acts as a shock absorber around the brain, the spine and the organs as well as the foetus in the womb and, finally, of course, it flushes toxic waste from our bodies via urine. Pretty important really! Some of my older clients tell me that they only drink 1 glass of water throughout the day because they don't want to get caught out when out shopping or driving somewhere, or that they won't drink before going to bed as they are trying to avoid getting up at night. This is a very bad habit, because we need water to hydrate our bodies. And when you wake up during the night it's because your body has worked hard during sleep to detoxify the waste products. It's telling you to go and get rid of them!

When you are feeling thirsty, that means that you are already dehydrated and your body is giving you a signal to do something about it. One shouldn't, of course, force oneself to drink water, but drinking tea, coffee or sweet carbonated drinks is not the answer. As well as water, you can drink fruit or herbal teas. And, of course, you can have a cup of coffee a day. It's when you drink 3 cups of tea or coffee before, during and after breakfast that isn't so good for you.

The other day I had lunch in a restaurant and I counted how many, especially young mums with children, were ordering a famous brand brown carbonated drink or (even worse) the diet version with their lunch. From the 7 tables I could see, only 1 ordered something different.

I am certain that this is because many

people don't know what is in carbonated drinks. So what happens when you drink too many carbonated drinks, fruit juice, coffee and tea with milk and sugar?

This is the fastest way of activating your pancreas to produce insulin because the blood sugar levels will go on a roller coaster ride. One minute they are up and the next they go plummeting and you start feeling tired, hungry and off you go again – reaching for another sugar/caffeine fix. It's so easy to get into this pattern without realising it.

What should you do? Gradually introduce water into your daily routine.

As soon as you feel hungry or thirsty – have a glass of fresh, filtered water instead of the usual coffee/tea etc.

Tap water has many impurities, hormones and toxins in it. A water filter jug is an inexpensive way of going in the right direction.

The body cannot differentiate between hunger and thirst – it gives out the same signals. Listen to your body – symptoms like headache, tiredness, lack of concentration, skin problems or constipation are all signs of dehydration.

As to how much you should drink depends on many factors. Is it a hot day, are you perspiring, are you exercising or not feeling well etc? One should drink approximately 1 ½ - 2 litres of water/day. A simple test to see how much you drink: place a large empty jug next to your kitchen sink. Every time you finish drinking a glass of water, fill the glass again and pour it in the jug. By the end of the day you'll have the answer. And of course anyone, especially on medication, should drink plenty of water to flush residues and toxins from drugs out of the body.

Water is absolutely essential for our wellbeing. As they say: **Moving rivers deposit little silt!** This applies not only to the cells in our bodies but also to the blood vessels, as well as your intestines.

Best of health!
Suzanne

GREAT BROMLEY PARISH COUNCIL

www.gbpc.org.uk

Clerk: Lizzie Ridout Email: clerk@greatbromley.org.uk

Firstly, thank you to those residents who attended the recent special meeting to discuss the many flooding issues experienced in the village. We managed to bring representatives from Anglian Water, Essex County Council Flood and Water Management Team, Tendring District Council and our County Councillor Carlo Guglielmi round the table so that residents had the chance to question the panel on the problems they have faced, and to share experiences. As a result of the meeting, it was agreed to set up a working group to explore what we can do in the future to try to prevent flooding as much as we can. A number of volunteers have put their names down to help tackle the problems – if anyone else wish to join, please forward your name and contact details to Lizzie at clerk@gbpc.org.uk

Two dog bins have been recently installed in Chapel Lane and Furze Lane however several complaints have been received that dogs' mess remains a problem – please, if you are a dog owner, take responsibility and clean up after your dog! Thank you to those dog owners who already do this.

Notification of some road closures has been sent to us as follows:-

Notice is hereby given that the Essex County Council intends, not less than seven days before the date of this notice, to make the above Order under section 14(1) of the Road Traffic Regulation Act 1984.

Effect of the order: To temporarily close the various lengths of roads in the District of Tendring as specified:

Road	Description	Alternative route
Harwich Road/ Bromley Road, Great Bromley/Elmstead Site 1	From its junction with B1029 to its junction with The Chase, a distance of approximately 2000 metres.	Bromley Road, A133 Clacton Road, A133 Frating Hill, A133 Main Road, Bromley Road, High Street, Frating Road and reverse.
Harwich Road, Great Bromley/Little Bentley Site 2	From its junction with B1029 to approximately 50 metres before its junction with A120, A distance of approximately 1911 metres.	A120, Harwich Road, Little Bromley Road, Manningtree Road, Church Road, A133 Colchester Road, A133 Main Road, S133 Frating Hill, A133 Clacton Road, Bromley Road, Harwich Road and reverse.

The works being undertaken will take place within an 18 month period from 31 October 2016, exact dates and times will be specified on <http://roadworks.org/>. The roads will be closed to facilitate each phase and then re-opened to the public. Access will be maintained for pedestrians and emergency services. Diversion routes will be signed at each location and residents will be informed of the dates of each phase via letter / leaflet drop and advanced warning signs on the road.

Lizzie Ridout, Clerk to Great Bromley Parish Council

PLANNING APPLICATIONS

REFERENCE	PROPOSAL	LOCATION
16/01040/OUT Mr & Mrs Martin O'Brien	<p>Outline planning application for proposed 6 No. detached dwellings and garages, and the change of use of the existing barn into a village shop with associated parking for visitors.</p> <p>Comment – Great Bromley Parish Council supports this application but requests a condition is included to provide a footpath along Harwich Road and also request 2 bus shelters at the bus stops. It also requests that the proposed shop should be in operation after the completion of two dwellings.</p>	Little Paddocks Frating Road Great Bromley
16/01308/FUL Mr S Brazier - Toad Hall Free Range Eggs Ltd	<p>Variation of condition 2 of planning permission 14/01581/FUL to permit changes to the design of the approved dwelling.</p> <p>Comment – Great Bromley Parish Council is against this application as it feels that the frequency of applications brings into question the applicant's actual intention. NPPF states the building should be appropriate for a farm worker. This is more like aspirational housing.</p>	Land East of Hall Road Great Bromley
16/01368/FUL Mr & Mrs S Brazier	<p>Erection of replacement detached dwelling (following demolition of existing dwelling) and alterations to existing vehicular access. Demolition of existing agricultural /domestic buildings and erection of replacement agricultural/domestic buildings.</p> <p>Comment – Great Bromley Parish Council is against this application notes it is a resurrection of a previous permission. It feels it is unsustainable as well as being in a flood risk area. There is no local bus stop and no pavement. Should permission be granted then GBPC would request a condition that demolition must take place before the commencement of new building.</p>	Bush Farm Hall Road Great Bromley
16/01330/OUT Mr & Mrs Volf	<p>Outline planning permission with all matters reserved for the construction of four new 2 storey, four bedroom houses with detached garages.</p> <p>Members were advised that this application had already been refused by TDC.</p>	Morants Hall Colchester Road Great Bromley

REFERENCE	PROPOSAL	LOCATION
<p>16/01524/ HHPNOT</p> <p>FOR INFO ONLY</p>	<p>Proposed single storey rear extension with pitched roof, 3.3m depth and 3.7m height.</p> <p>Noted</p>	<p>Roseland Colchester Road Great Bromley</p>
<p>16/01427/ COUNOT</p> <p>FOR INFO ONLY</p>	<p>Change of use of agricultural storage barn to 2 dwellings</p> <p>Comment - Great Bromley Parish Council feels it important to register the strength of local feeling against this proposal, on a site which currently has little agricultural purpose but instead now has industrial and retail usage, a new house and now more housing proposed. The PC feels it totally goes against the spirit of the special agricultural planning considerations. Cladding and steel roof does not fit in with surrounding properties. Not in keeping and not sustainable (no bus stop). The mobile home should also be removed.</p>	<p>Primrose Farm Hall Road Great Bromley</p>
<p>16/01534/OUT Mr S Brazier - Toad Hall Free Range Eggs Ltd</p>	<p>Development of land for residential purposes</p> <p>Comment - Great Bromley Parish Council strongly objects to this proposed ribbon development or infill on open countryside and agricultural land. Ribbon development is discouraged in the existing 2007 Local Plan and is not a proposed option in the emerging plan. This proposed development is outside of the settlement boundaries for both the aforementioned plans and should be discounted. In the statement we note the attempt to make this seem sustainable by the mention for a potential for the closed local pub and post office to reopen in the future, but this speculative proposal cannot be considered in that light until such time as both facilities are instated and proven. It is not sustainable (no bus stop) and no pavement.</p>	<p>Land East of Hall Road Great Bromley</p>
<p>16/01074/FUL Mr M Rust</p>	<p>Erection of single storey rear conservatory extension</p> <p>Comment – Great Bromley Parish Council supports this application.</p>	<p>10 Springhill Close Great Bromley</p>



IN THE GARDEN WITH KATE

I can't believe it! This year, my walnut tree was loaded with nuts. Really loaded. I thought that for the first time, I would be able to crack my own walnuts at Christmas, whilst casually mentioning that they all came from my tree, but no. The squirrels have struck again. Not a single nut is left. Not one. I am desolated.

Autumn has arrived with a vengeance. I have been diving in cupboards to find fleeces and jumpers, and have had to wear socks for the first time in months. On a happier note, it seems to have cleared the wasps which were becoming a bit of a menace. I found a hornet in the house the other day, and it was HUGE.

There is still some colour in the garden at the moment with delphiniums, sedum, cosmos and roses still flowering, and the autumn tubs are looking very pretty, but I know that a frost will certainly change all that, but on the bright side, the trees are beginning to look very pretty in their autumn colour, just before they tip all their leaves on the lawn!

I have been busy harvesting Pumpkins and Squashes, which seem quite good this year, despite the lack of rain in the last couple of months. The apples and pears are spectacular, and my quince tree is at last bearing fruit.

Vegetable gardens can now be cleared of a lot of the produce, which enables one to weed and mulch. I have noticed that several people around the village are offering horse manure for free. It is a great and easy way to feed vegetable beds. If forked onto the surface now it will be taken down by worms over the winter, and have the added advantage that it suppresses weeds.

All frost tender plants should be protected by now, either in greenhouse, conservatory or by cloche. Not only could there easily be frosts, but heavy rain can also severely damage plants. It is also prudent to check fences and gates as well as climbers and

young trees that could be severely damaged by gales, making sure that they are firmly anchored. Open and piped ditches should be checked to make sure they are running freely.

Winter is also the traditional time to plant bare rooted trees and shrubs and new hedges, digging planting holes in the winter is certainly one way to warm up!

Dahlias should be lifted now after the foliage turns black, and the tubers should be washed of all earth, trimmed and stored upside down in a cool well ventilated spot.

Some herbs can be brought inside for a continuous winter supply. Mint and chives are excellent for this, and a few roots potted up will keep you going all winter. Basil, chervil, coriander, dill and parsley can also be raised from seed on a bright windowsill. In addition, some salad crops can be propagated in the same way.

The seed catalogues are beginning to drop through the letterbox, giving the ideal excuse to plan your beautiful garden next year!

Happy gardening! - *Kate Stowbridge*

2016 EVENTS



NOVEMBER

- 2 WI meeting, Village Hall, 7.30pm
- 5 Lt Bromley Village Fireworks and Bonfire, from 5.45pm
Murder Mystery Evening, Venture Centre, 7.00pm
- 9 Gt Bromley Parish Council meeting, Village Hall, 7.30pm
- 12 Gt Bromley Litterpick, Bromley Cross Inn car park, 10am
- 14 Quiz Night (Cricket Club)
- 17 Friendship Club meeting, Village Hall, 2.00pm
- 25 St Helena's Hospice Charity Pamper & Shopping event, Village Hall, 7.30pm
- 26 Willow Weaving course, Village Hall, 10.00am
Christmas Market, Seven Rivers Cheshire Home, 11.00am

DECEMBER

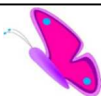
- 3 Christmas tree & Crib Festival, Gt Bentley church
- 4 Messy Christingle, Gt Bromley Village Hall, 3.00pm
- 10 Christmas Fayre, Village Hall, 10.00am
- 14 Gt Bromley Parish Council meeting, Village Hall, 7.30pm
- 17 Amenities Group Christmas Dinner, The Haywain
- ? Christmas Market, Seven Rivers Cheshire Home. Details to be announced.

CHARITY PAMPER AND SHOPPING EVENT

In support of the Invicta Foundation & St Helena's Hospice

Friday 25th November 7.30pm – 9.30pm
Great Bromley Village Hall
Tickets £2 in advance or £3 on the door

Raffle Tickets available at £1 per strip
Contact: Claire Appleby on 07828 184 976,



Quiz Night

with the Cricket Club
14th November

Knit and Knatter

meets in Seven Rivers Cheshire Home
2.00pm-4.00pm

Just come along with knitting needles or crochet hook - or whatever! - and create and chat
For more information contact Mary Hart on 01206 230419 All welcome



St Mary's Church Gt Bentley Christmas Tree & Crib Festival

'Christmas Around the World'

SATURDAY 3rd DECEMBER

10.00am - 4.00pm

SUNDAY 4th DECEMBER

11am - 4.00pm

Large Christmas Food Stall
and Christmas Gifts Stalls

Light Lunches, Teas available all day
Entrance £1.00 Children free

Manningtree Rotary is hosting at the
Venture Centre Lawford
Murder Mystery evening

Fifty Shades of Grain (A Cereal Killing)
on 5th November at 7pm.

Tickets £18.00 including Fish & Chip supper. Reservations required,
Cash bar available (own drinks prohibited).
Tickets available from DN Howells & Sons
11 High Street Manningtree or email
demonpostie@sky.com

Willow weaving course

Make a festive reindeer from willow
Workshop led by experienced tutor Jo
Hammond
Saturday Nov 26th 10-4pm
Cost incl sandwich lunch
and all materials £60
£10 deposit secures place
Contact Kate 07592 735600



The Autumn Great Bromley Litterpick

Saturday 12th November

Volunteers needed, please, to meet in the Car Park of the Bromley Cross Inn at 10am. Please bring suitable clothing, footwear and gloves. Hi-visibility jackets, rubbish bags and litter grabbers will be provided. Owen Blowers



Seven Rivers Cheshire Home Christmas Market

Saturday 26th November
From 11.00am

Goods for sale from Avon to Teddy bears needing homes, refreshments with some lovely home-made cakes

Santa is fitting in a time for a visit from the North Pole



LITTLE BENTLEY PARISH COUNCIL PRESENT:

Who would be the future
and quantity required,
please contact:
Margi Green, Chair

VILLAGE FIREWORKS & BONFIRE!

05 NOVEMBER 2016

BRICKLAYERS ARMS - FREE ENTRY

NEW THIS YEAR..... GUY COMPETITION.....!

BBQ, RAFFLE, MULLED WINE 5.45 PM

GUY COMPETITION JUDGING 6.15 PM

BONFIRE 6.30 PM

ALL WELCOME - PLEASE JOIN US!

Great Bromley Christmas Fayre

10am to 1pm
Saturday 10th December
at the Village Hall

We have lots going on including;
GRAND Christmas DRAW
tombola * slot car racing * Kids craft
Cakes & produce *
children's competitions
Christmas wreaths and decorations
stocking fillers and gifts *
books

Selection of Children's Games
jewellery and crafts
AND MUCH MORE

We will also be serving drinks and refreshments for all ages
All Proceeds to Village Hall and Great Bromley WI funds



All proceeds to the Children's Society
Donations of £1.00 per child
(Accompanying adults free)

Messy Christingle!

Come and have some family time,
some messy Fun and a light tea
on

Sunday 4th December

Registration at 3.00pm –
5.30pm
at Great Bromley Village
Hall

All Welcome!

For more information
please contact:

Carol Cordwell: 01206 395103
Churches of Ardleigh and The Bromleys



THE DOCTORS' SURGERY NEWS



Great Bentley Surgery

Anyone attending an appointment at the surgery will have noticed that we publish how many appointments are wasted every month by patients not attending (*Did not Attend - 'DNA'*). This is particularly frustrating for everyone when you consider how difficult it can be to get a non-urgent appointment less than 2/3 weeks ahead due to demand. **No 'DNAs' would be like having an extra GP session each week!**

We've managed to halve the amount of DNAs over the last 18 months by writing to regular offenders. If a patient has DNA'd 3 times in a 12 month rolling period, we send them a letter detailing the occurrences and asking them to avoid this in the future explaining the impact this has on others. If they subsequently DNA another 2 times within 6 months of that first letter, they get another letter telling them that their on-going registration will be reviewed by the partners. If no contact is attempted, then they can, and will, be removed from the patient list. Fortunately we've only had to resort to this twice so far.

When DNAs have been discussed at the Patient Participation Meetings, it's always been suggested that we remove patients much sooner, in fact some quite severe 'punishments' were suggested! However, removing patients is a last resort which can be challenged by NHS England, so we need to be seen to offering a chance for patients to change their ways. We are now going to start sending letters after just 2 missed non-urgent appointments however, and also for patients who miss appointments they book as urgent on the day, as these are particularly unacceptable. Failing to change behaviour after this will still result in registration being discussed with the partners.

Richard P Miller - Practice Manager

This part of our newsletter publishes suggestions from this 102 year old book called **"Hints to Mothers"** on the health and wellbeing of children prior to the NHS existing. We hope you find this interesting and in many instances still useful even today. ***Please bear in mind this was written a long time ago!***

Falls – Children pass most of the time in falling down and picking themselves up again, without any serious consequences. But should a child fall on his head and be stunned, send for a medical man. Pending his arrival, lay the child flat on his back, loosen the dress at the throat, and sprinkle cold water on the face, keeping the child as quiet as possible.

Head ache – Head ache in children is often caused by excitement and over-fatigue; this is particularly so if the child is not strong. Children who are growing rapidly are often subject to headaches. The patient should be fed up well, given a tonic, and plenty of fresh air.

I guess not much has changed here other than the fact that a fall on the head leaving a child stunned should really result in a trip to A&E now we have these a hundred years on!



The Patient Participation Group will be holding its monthly meeting at 6.30am on Thursday 17th November at the Great Bentley Village Hall.

SEVEN RIVERS CHESHIRE HOME

Our Bonfire party is nearly here, I am hoping to see you there, so please come up and say hello, lets just hope we have a nice dry evening. We will be holding a Christmas Market within the Home on Saturday 26th November from 11.00am. I know this clashes with others in the area but I'm sure you would like to come along to support us as well. We will have a lovely selection of goods for sale from Avon to Teddy bears needing homes, refreshments with some lovely home-made cakes. With all monies going to our home. I have contacted the North Pole for a visit from Santa but as yet have not heard back but I'm still hopeful that he will visit us. If you have anything you would like to donate to this event

please let me know or bring it into the home.

Our residents are also looking forward to Christmas. They will be visiting the Mercury Theatre to see Dick Whittington, the Panto. For those who are unable to travel we have a visiting panto coming to us who will perform Sleeping Beauty, plus a host of musical entertainers and the children from our lovely local School and Nursery. A busy few weeks ahead but what looks like to be lots of fun and laughter.

So please support us so we are able to continue with giving our residents fulfilling lives.

Take Care
Liz Barrenger, 01206 230345

THE THIRD AGE TRUST



THE UNIVERSITY OF THE THIRD AGE

STOUR VALLEY U3A

Membership

Our main purpose is to encourage lifelong learning for those who are no longer in full time employment and emphasis is always placed on making learning active and fun as well as helping in developing friendships. We have a wide range of groups including language study, country walking, computer studies and gardens, churches and historic buildings visits. In the main, membership is drawn from communities in the lower Stour Valley and adjacent areas including Brantham, Capel St Mary, Dedham, East Bergholt, Holbrook, Lawford, Manningtree, Raydon, & Stratford St Mary. We are affiliated to the ThirdAge Trust, have over 260 members and 21 groups. For further information please visit www.stourvalleyu3a.org.uk where membership secretary Val Pretty may be contacted.

Recent Meetings

On Wednesday 12 October after our AGM, Andrew Phillips OBE (Lord Phillips of Sudbury) talked on "Life in The House of Lords". He gave his views on the House of

Lords, that he knows inside out, as an institution and added some reminiscences from his 17 years there.

Future Meetings

On Wednesday 9 November Adrian Wright FRGS will talk on "Earth on Fire". Hawaiian larva oozes continuously while Krakatoa & Vesuvius have been dormant for decades - sometimes centuries - between cataclysmic events. This illustrative talk examines volcanic variety, exploring reasons for such diversity. Whilst we do not have a speaker meeting in December our popular Christmas Lunch will take place on Wednesday 7th December in the Constable Hall.

Meeting Venue

We meet at The Constable Hall, Gandish Road, East Bergholt CO7 6TP at 2.15pm. Annual membership costs £12 a year and this entitles members to attend the meetings that take place on the second Wednesday of each month, except August and December. **Remember** It's never too late to learn! Join the 361,477 members across 969 U3As throughout the UK today!

DISTRICT COUNCILLOR NEWS

Complaints at Parish Council meetings and residents continue regarding the speeding of vehicles through our rural villages.

Closely followed by complaints about pot holes and the increase in fly tipping.

At the next full council meeting in November I intend to submit a motion asking for council's support in demanding the Police Officer in charge of Tendring to provide sufficient police officers to carry out speed enforcement checks in the rural areas of Tendring.

The system of reporting pot holes, or any other highway related problems, to ECC Highways means that when reporting a problem an incident number is given.

Please make a note of the incident number. If the pot hole or the incident has not been dealt with in a reasonable length of time, please contact me. What is a reasonable amount of time? This depends upon the nature of the complaint, all reports should be investigated within 28 days. District Councillors in Tendring are very unhappy with the responses from ECC Highways and are seeking to improve the actions of Highways.

On 5th October a meeting was held at the Village Hall regarding problems with flooding in some areas of the village. Representatives from Anglia Water, Essex County Council flood team attended. County Councillor Carlo Guglielmi chaired the meeting which was also attended by both District Councillors. It was agreed to set up a working party, including Anglia Water and ECC, to try to prevent further flooding in the areas affected. Unfortunately ECC Highways failed to attend!

Problems with the increase of fly tipping is reported to TDC and dealt with very quickly. This problem may have been increased since the changes to who/what is permitted by ECC at the general sites for disposing of normal waste. Our County Councillors are aware of this and will be raising our concerns.

Heavy Goods Vehicles breaching weight restrictions continue to be a problem, Trading Standards, who are the authority for dealing with this matter, are aware and investigations are continuing.

Cllr. Fred Nicholls

KITCHEN CORNER

Stuffed Marrow or Pumpkin

250g Minced meat or
sausagemeat

1 large marrow split in half length-wise
250 g red or brown rice cooked and drained
1 large onion finely chopped
1 or 2 cloves garlic chopped.

Heat some oil in a pan and cook the onion and garlic gently till softened but not brown. Stir in the meat and cook over higher heat till well browned and mixed. Add seasoning such as curry powder or garam masala and salt/pepper and tomato paste to your own choice. Add 1 tbsp flour to thicken and some stock or water to make a soft mixture. Simmer a few minutes.

Prepare the marrow by scooping out the seeds and fibres to make a nice hollow then lay the halves in an oiled baking dish. Mix the rice into the meat and adjust the texture: use more stock if stiff or more rice if too sloppy. Fill the marrow halves and smooth the tops then add a few sliced mushrooms or peppers or tomatoes, whichever you prefer. Lay a buttered paper over and bake in a hot oven 30 mins or more depending on the age of the marrow. Serve with a sauce or gravy or ketchup. Your choice! *Jill Frostick*



Dr. Jane Pearson returned to us for a second talk. This one was to be about The Essex Workhouse in the 18th. Century.

We were told that the very first workhouse was commissioned in 1695 in Bristol by a special Act of Parliament. The first workhouse in Colchester was to be built in 1697 after a petition to parliament.

If the local people needed help with money they were told to go to the local workhouse where they would reside and would be expected to work for the money, there was no such thing as a "free handout"

In 1711 one appeared in Thaxted, and by 1750 there were at least 64 work houses in Essex. If a work house was thought to be needed, they first had to find a building, eg an old barn, There were no cooking facilities in the work house as we know them, so the bread was made in the work house and then taken to the bakers in the village to finish off.

The workhouse had two functions:

- 1) to set the poor to work.
- 2) to stop them asking for benefits.

Dedham was famous for its sack making, but above all whilst in the workhouse, the inmates had to abide by the discipline imposed and also good morality was high on the list.

Workhouse Masters, as they were known, were not local people because of the discipline needed: a local man would not be able to be impartial by the very fact that he knew everyone. The Work Master would be paid 2/- a week per head whether they were a child or an adult. In Essex up to about 1780 around 20% of the people would require support.

There would be many reasons for admission to the work house. In the case of children, the death of a parent, wife and children would be admitted because of the husband's desertion. If a man became bankrupt he and his wife would often be

helped with a job and home by the parish in which they lived.

If a women became pregnant she would go into the work house, have the baby then, after a suitable time, she would be expected to find work, leave the baby in the work house and then contribute to its care.

Anyone suffering from mental health issues would be placed in a single room, but worst of all an elderly person living alone would be forced to leave their cottage, their goods would be sold and they would be made to move into the work house so their cottage could be used for a family. A single person may get wind of this and before any of this happened they would get their families to take what they wanted before the sell off time.

Initially the stay would be for more than a few months, but later on the stay would be much shorter.

The inmates were expected to attend church on Sunday or lose a meal either Sunday night or Monday lunch time.

Plenty of food for thought with this talk, perhaps expecting those who are able in this day and age to carry out voluntary work for their benefits!! (no such thing as a free handout)

Joy Rolfe

Next W.I. meeting

Wednesday 2nd November 7.30pm

"Bromley Got Talent" and Auction.

Please bring fillings for Christmas Shoe Boxes. All Welcome.

W.I. Coffee Morning

Held on 15th October

Great Bromley W I are delighted to be able to present the Essex Air Ambulance with a cheque for £300 +. A very successful coffee morning. Thank you to all who supported this very worthy charity.



St Helena Hospice
your time...your hospice
Registered Charity Number 20919

ST HELENA HOSPICE

Unleash your superpower for hospice care

Be a hero by dressing as **your** hero to run or walk around historic Castle Park in Colchester for St Helena Hospice!

The new Comic Hero Run fundraising event on Sunday 19th March is set to be great fun for families, film fans and comic book buffs alike. Whether you're a fan of comics, TV or films such as Star Wars or Marvel, Lord of



the Rings or Frozen – this one is for you!

There is a choice of routes:

10k open to anyone age 16 and over; 5k open

to anyone age 5 years and over; 1k (including buggy dash) open to all, with age 4 and under going free! Please note children age 12 and under must be accompanied by a responsible adult at all times during the run.

Every penny raised in sponsorship during Comic Hero Run will help local people with

an incurable illness to live well and die with dignity and choice. Andrew understands the importance of hospice care – his mum, Christine, spent her last days at the hospice's Inpatient Unit. He said: "The hospice

seemed to reach in and fix something in the heart of our family to help all of us cope and that was the beautiful thing. Something that every human being deserves at the end of their life is that ability to relax, to not be afraid or scared."

So dust off your cape, dig out your wand or simply suit up for the fundraising fun run! Register for an early bird discount by 12pm Saturday 3rd December at sthelenahospice.org.uk/comic17 or for more information email events@sthelenahospice.org.uk or call 01206 931468.



PETER STUART SCOTT 1935-2016

Peter was born on 25th January 1935 in Bebington, Cheshire. He had memories of his first family home before moving to Romford in 1939 where the many air-raids provided adventure playgrounds for him and his friends! He and his mother evacuated to Cheshire for a while. They would also visit Brightlingsea where his Uncle had a farm and his Grandparents had retired to. In the mid 1940s Peter received a woodwork tool set for Christmas; he was most enthused by this and when his parents entered his bedroom they were greeted by the sight of Peter's initials engraved on his headboard.

He joined the Air Cadets, which was to lead to a life-long interest in flying and aircraft. His early flights were in Tiger Moths and he eventually owned a Piper Cherokee. He was thrilled to be have a flight in a Spitfire, and take the controls for a while. He would not fly again after that as he wanted this to be the final entry in his log book!

He cycled to and from school, took part in road races and went on cycling holidays with his cousin Roy. He was very keen on tennis, as was his mother. She played at the Wavertree Tennis Club near Liverpool and in 1932 had won a cup saying "WTC Ladies Singles Winner". She tricked Peter that WTC meant Wimbledon Tennis Championships when he was young! Peter played at Frinton, Wivenhoe, Brightlingsea and Kirby Cross clubs.

He passed his 11+ and attended the Royal Liberty School in Gidea Park up until 1951 and then trained as an architect, being accepted into the RIBA in 1959. He and a fellow student decided to go on a 3,500 mile tour of the Continent in his friend's 1929 Austin 7 saloon; this was a huge adventure often reminisced.

After working in various practices in London and Germany Peter settled in Brightlingsea. He became a Section Manager in the Architect's Department at the Town Hall in Colchester and took advantage of the Local Government reorganisation in 1974 to

establish his own practice, Scott and Masters, along with the head architect.

After moving to Great Bromley, where he and Susan settled so happily, he was elected as a District Councillor. He was adamant that he would not sit on the Planning Committee due to his own many battles with planners over the years!

Peter's skills and experience as an architect have been a great help at both our churches. Peter was not a churchgoer but was committed to helping with the care and repair of these fascinating historic buildings. Peter was on the St George's Repair Committee and a hands on member of the Friends of Little Bromley. He was always eager to meet a challenge and dynamic in addressing issues, including evasive action when a flock of starlings were trying to nest inside St George's! He felt honoured to be involved with other villagers in the design and construction of the 'Remembrance Poppy' by the War Memorial.

Peter had wished to be cremated but as he loved the village and the church so much changed his mind and asked to be buried in the churchyard. He now lies next to Phil Allam, in a strange coincidence, in that he knew the Allams back in Romford days and had played tennis with Phil's sister Christine. Peter was very proud of his children and their families, and with Robert and Ginny both local in Wivenhoe he was able to enjoy their company and had lovely times with granddaughter Lily.

I heartily thank everyone who came to Peter's funeral and the wake at the Village Hall, and am so sorry that I did not get the chance to speak to everybody on the day.
Susan Scott.



WE PLOUGH THE FIELDS AND SCATTER

Harvest

The Church looked beautiful this September for our Harvest Festival celebrations.

Thank you to all who worked hard and made St George's look so splendid. Thank you to all who donated produce which this year was distributed to Seven Rivers Cheshire Home and the Manningtree Food Bank.

Thank you very much, we are always very grateful for help at Festival times. Please, please just give me a ring if you have a talent to share and would like to be involved, you may have just moved here, you will be most welcome.

Simon led our Service of Praise and Thanksgiving service at 10.30am on the morning of September 25th followed by our Annual Harvest Lunch at the Village Hall.

Although a little low on numbers this year the Harvest Lunch was a triumph, delicious food, fun and great friendship. We welcomed this year our Curate in Charge, Simon, and his wife, Gill, and daughter, Katie, it was a great pleasure to share this occasion with them.

Our newly decorated Village Hall looked splendid as the autumn sunshine sprinkled through the windows.

Thank you Linda for your culinary expertise, the Chicken and Leek pie was yummy as

FRIENDSHIP CLUB

Our Speaker for September, Mr Bob Clarke gave a very interesting account of his life in submarines, and brought along copies of his autobiography which members were able to buy.

A team of four has been selected for the Quiz Night on 15th October - good luck to them!

An alternative speaker for our October meeting has been arranged. We shall be listening to a Toast Master whose subject is "Pray Silence For". The competition, a playing card.

was the Autumn Fruit Crumble which followed for dessert.

A bucket collection for Beacon House in Colchester generated £141.70 for their funds. Thank you to all who gave so generously.

To complete our Harvest Celebrations the children and families from St George's School visited for a service on Monday 10th October. The singing and readings were superb, well done all children and staff for the hard work into making an event like this such a success.

I especially enjoyed "Cauliflowers Fluffy" and "Harvest Samba". Well done - we are now looking forward to Christmas !

New Statue

Wonderful News!!! We have a new statue in St George's to replace the Madonna and Child stolen three years ago!

We are delighted to announce the arrival of a very beautiful statue sculpted by a very talented lady called Mandy Pratt from Arleigh.

We are very grateful for a very generous donation by a member of our village and our community who enabled the commission of this beautiful work.

If you would like to join us on December 11th at 10.30am the statue will be dedicated by the Bishop of Colchester The Right Rev.

Roger Morris. Everyone is very welcome.
Jenny Nicholls, Churchwarden



Arrangements for the Christmas meal on 30th November are well under way. This will be held at the Elmstead Church hall. Numbers and names of those wishing to attend will be taken at our next meeting.

The Concorde singers are coming along in November for our entertainment, and the competition a candle stick/holder.

New members are always welcome, so please do come along and join us. We have a varied programme and you will be made very welcome. *Sylvia Ward*

FROM THE RECTORY

The British politician William Ewart is a man who the vast majority of the public have never heard of. Born in 1798, Ewart entered parliament in 1828. His wide ranging political career saw him serve as MP for Bletchingley in Surrey, Liverpool, Wigan and then finally for Dumfries Burghs in Scotland.

Ewart was instrumental in establishing free public libraries, for legalising the metric system of weights and measures, and he fought unsuccessfully for the abolition of capital punishment. Of all his achievements, the one he will be remembered for, was that he conceived the idea of a Blue plaque installed in a public place to commemorate a link between a famous person or event. The first two of these plaques appeared in 1867, when the Society of Arts had one to mark the birthplace of the poet Lord Byron placed in Cavendish Square, and the other at King Street in Westminster in a previous home of French President, Napoleon III.

From those early days, there are now more than 900 blue plaques all over London. The diverse list of individuals whose names appear on these plaques includes literary giants Evelyn Waugh and Sir Arthur Conan Doyle, athlete Harold Abrahams

and footballer Bobby Moore, aviator Amy Johnson, women's suffrage campaigner Emily Pankhurst, astronomer Sir Frank Dyson and composer Gustav Holst.

The criteria for the recipient of a blue plaque starts with the requirement that the person proposed must have died at least twenty years ago, and that the building genuinely has an association with them. Apart from that, members of the public are encouraged to make nominations from all walks of life.

Despite the many potential people who could end up with their name on a Blue Plaque, there are millions more whose contributions to our world will end up forgotten. Men who struggled to bring up a family on their own. Women who gave their lives to feed the homeless. Children who befriended the friendless.

God does not forget. The bible tells us in the Psalms that he knows us fully and intimately - from even before we were born. He loves us unconditionally, and doesn't need us to have any kind of celebrity or public recognition. If there was a plaque that sat on the walls of heaven with our names on it, it would say 'Child of God, loved completely.'

Simon

Rev Canon Simon Heron Lawford, The Bromleys & Little Bentley Area Dean of Harwich



STOUR VALLEY MEN'S PROBUS CLUB

Meeting Venue

We meet at the convenient St John Ambulance HQ, Manningtree CO11 1EB

New members

Our Club endeavours to be simple in structure, be free of the constraints and obligations of service clubs, and involve members to a minimal cost. The club is directed primarily to providing fellowship between members who are compatible with each other, and provide the opportunity for development of acquaintances. New members are welcomed by Stour Valley Men's Probus Club, we meet on the first and third Wednesday of each month in Manningtree at 10.30am. Please contact Secretary Brian Rolfe on 01206 393665

Recent Meetings

On 5th October our speakers' (Anne & Dennis Kell) subject was "Natural History of Bats" and on 19th Oct David Ablewhite presented "Wallace & Edward". Both events proved popular with our Members.

Future Meetings Diary Dates

Our November speakers are: 2nd ~ John Stark "Mid Suffolk Light Railway"
16th Homestead Senior Care "Senior Fraud"

Our December meetings are: 7th ~ Robin Finch "Entertains"
21st ~ Paul Oliver "Christmas Quiz"

ST. GEORGE THE MARTYR, GREAT BROMLEY



Services for November

Sunday 6th	3rd Sunday before Advent 8.00am Holy Communion 6.30pm Sung Evensong
Sunday 13h	Remembrance Sunday 10.45am Gt Bromley War Memorial then Morning Worship in church 10.45am Lt Bromley War Memorial
Sunday 20th	Sunday next before Advent 8.00am Holy Communion
Sunday 27th	Advent Sunday 10.30am Parish Eucharist

The church is open daily and you are welcome to visit.
More details and information at www.greatbromley.org.uk

St Mary's Church, Lawford

Every Sunday	8.00am Holy Communion
1st Sunday	10:00am Holy Communion
2nd Sunday	10:00am Family Service 6:30pm Evensong
3rd Sunday	10:00am Holy Communion 6:30pm Cafe Church
4th Sunday	10:00am Morning Worship
Wednesdays	9.30am Holy Communion

St Mary's Church, Little Bentley

First Sunday	10.30am Morning Prayer
Third Sunday	10.30am Holy Communion

St Mary's Church Ardleigh

1st Sunday	10.30am Parish Eucharist
2nd Sunday	8.00am Holy Communion
3rd Sunday	10.30am Parish Eucharist
4th Sunday	8.00am Holy Communion
5th Sunday	10.30am Parish Eucharist

J.A.M. DROP-IN

Every Friday in St George's church
Term time only
Parents & children welcome
All are welcome * 3pm to 3.45pm
Refreshments, activities

Church Lunch

Friday 4th November
12 Noon.

All very welcome, Good company, Good
food, Delicious Homemade Winter
Vegetable Soup

FROM THE REGISTERS

Holy Matrimony

Hollie Blanchette and Mark Bowater

Cleaning, Dusting, Polishing?

Do you have an hour to spare? Could you
help clean our beautiful Church?
Please contact Ann or Henry 250229