

# ***The Bromley Messenger***

**April 2009**

Volume 23 No 1

## **CAMRA Pub of the Year for TENDRING 2009**



*Photograph courtesy of Colchester Gazette*

**The Haywain, Little Bromley**

## KATISHA'S KOLUM

Once again I have been left in charge of getting the magazine out to you all. Mistress has a dreadful cold and doesn't feel very well but is packing her bags all the same to go to Madeera for a week 'for a bit of sun', she says.

I, too, am fed up with winter and have been taking over Master's chair whenever possible or I hide just so as not to be put outside where the ground is either wet, cold, hard and crunchy underfoot, slippy, slidy or with white stuff which is cold AND wet. I don't like any of it and try to keep my paws out of it as much as I can. However, these past few days have been better and I am on the prowl again.

I see the village now has approximately 2000 extra trees which is very good news if you are a cat like me or any other climbing animal or a bird or insect. Mistress is pleased too. She says 'Plant a tree now for your children or grandchildren to enjoy'. I think it must have been jolly hard work planting that lot but many paws make light work and everyone in the photographs looks very cheerful.

The cover this month boasts that the Little Bromley pub, The Haywain, has won the Tendring CAMRA Pub of the Year award for 2009. Many congratulations to them. I personally do not like the stuff but my young Masters do. The Haywain also do very good meals. (See more on page 11)

The walking for charity season has begun. Mistress' sister was to run in the London Marathon but has had to pull out because she broke some ribs when she fell off her bike on the slippy slidy stuff but Kate Strowbridge is doing the Moonwalk, in aid of breast cancer research, in May so do please support her (see page 17). I wonder if it is a full moon that night?

Master has been busy in his vegetable patch which he didn't do much with last year, so I shall have my work cut out making sure the seeds aren't eaten. This month, as well as tips on which vegetables to plant, Frank Griffiths has given advice for the soft fruit patch - Mistress' terrain.

I must be off - I have work to do. I am guarding the frog and toad spawn in the pond from hungry beaks. Mistress says they are a gardener's friend when they grow up.



**PLEASE SUPPORT OUR SPONSORS & ADVERTISERS**



## WORKING GROUP 13 - TREE PLANTING

The village tree and hedge planting project is now complete for this season. Thanks to our dedicated band of tree planting volunteers, over 700 trees and shrubs have been planted in Great Bromley, primarily in roadside hedgerows. In addition, 195 have been donated for planting in the neighbouring villages of Little Bromley and Frating. This brings the total number of trees planted in the last 2 years to nearly 2000. A further 300 trees remain in the village tree nursery for planting out in the future.

Thanks are due to those volunteers who helped to plant the trees and hedging and also to landowners who have supported the working group by allowing trees to be planted on their land and in some cases agreeing to nurture them whilst they are growing. A big thank you also to Dean's Garden Centre for their generous donation of some planting compost and for supplying discounted nutrients.

I should be grateful to receive any suggestions for suitable locations in which to plant trees next season so that these can be considered during the planning process - please contact me on 01206 250263.

*Martin Frostick*



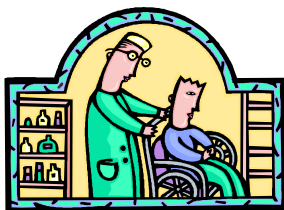
*Photographs by Martin Frostick*

# FROM THE DOCTOR'S SURGERY

## Ardleigh Surgery News

### Patient survey results – December 2008

A survey was carried out during the first week of December 2008 when patients were requested to take a questionnaire form home which was handed out in the surgery with a response rate of 77% (174/225 forms) The full results of the survey are on the practice website at [www.ardleighsurgery.nhs.uk](http://www.ardleighsurgery.nhs.uk). In common with previous surveys, the results indicate high patient satisfaction with the services provided by the doctors and staff. The figures in brackets are the results of the October 2007 survey.



98% (98%) rated the way they were treated by receptionists as good to excellent.

92% (94%) rated the hours the surgery was open as good to excellent. 7% (12%) would like extended evening surgeries and 38% (34%) access at weekends.

97% (95%) rated the time they had to wait to see any doctor as good to excellent. (89% (79%) within two working days)

100% (98%) reported that they could see a doctor urgently on the same day.

81% (76%) rated the time they had to wait in the surgery to see a doctor as good to excellent. (98% (92%) seen within 20 minutes)

86% (85%) rated the ability to get through on the telephone as good to excellent.

76 (64) patients wrote appreciative comments about the practice on the form.

19 (30) patients requested improvements to the services we provide as follows:-

9 patients would like the surgery to be open during the weekend particularly on Saturday

mornings and 2 patients would like to be able to access late evening surgeries  
2 patients found getting through to the surgery on the telephone difficult, in particular the direct repeat prescription line  
2 patients would like to see GPs from their own practice out of hours.

1 patient felt the parking was a problem  
1 patient would like to be able to obtain their medicine from the dispensary rather than the pharmacist.

1 patient complained about length of time for the practice to send a repeat prescription to a chemist.

1 patient felt that the GPs should be more supportive of locum doctors when they are not sure of a diagnosis.

The practice will be addressing these issues and finding solutions where practicable. Some are difficult to resolve such as car parking. We cannot make the car park any larger but we would remind patients that it should only be used for the disabled and parents with babies and the free village car park should be used as an alternative. We already staff two telephone lines every morning for appointments and queries. The prescription line is particularly busy, but we are one of the very few practices that allow patients to telephone for their repeat medication requests. Alternatives are offered such as posting, faxing and using the web-based facility EMIS-Access. We would request patients to telephone after 2 pm for blood and other pathology results and non urgent queries.

On the question of the out of hours service, one of these patients felt that NORDOC, the GP co-operative had provided a better service and felt that it was unfortunate that GPs were not prepared to provide care to their own patients out of hours, in particular, when it came to care of the dying. Unfortunately, it is no longer feasible for GPs to assume responsibility for out of hours cover with the demands of modern day general practice. The care of the dying

*Continued on page 7*

*Continued from page 5*

is now very much seen as an area of patient care that requires co-ordination and communication between GPs, Harmoni, District Nurses and MacMillan Nurses.

Extended access is a contentious issue which is being given a high priority by the government. The Ardleigh practice GPs are not convinced about the need to provide extended hours and would rather concentrate on providing a responsive and accessible service during the day for the majority of patients. There is also increasing demands on the GPs time from Government and PCT initiatives for additional work to be undertaken within primary care including screening for cardiac vascular disease, screening and reviewing chronic kidney disease, screening for osteoporosis and alcohol misuse.

#### **Branch surgeries**

Unfortunately we have had to close our branch surgery in 'Berridale', Gt Bromley following the death of Mrs Vera Biddis. We had used Mrs Biddis' rear lounge as a consulting room and 'port of call' facility for many years once a week on a Wednesday morning. Only one or two patients ever attended but it was also used as a dropping off point for dispensed medicines. Owing to the low usage we will not be seeking to replace it.

Coincidentally, we have decided to apply to the PCT to make use of the vacant branch surgery facility in Manningtree Road, Dedham. This purpose built surgery has not been used as a general practice facility since the East Bergholt practice changed their mind about using it at the time it was being built two years ago. The surgery is on the ground floor of housing association flats and was developed with funds raised by a charitable trust with contributions from Dedham residents. We have always looked after over 40% of the population of Dedham and this has grown to over 50% in recent years.

To avoid placing more pressure on our main surgery we have decided to apply to use the Dedham facility for two sessions per week. It is our intention to use it as an integral part of our practice and non-Dedham residents will be able to attend the facility. We are waiting for PCT approval and then for computer links to be installed so we are unlikely to be able to use the surgery until June.

*Fred Merrin, Practice Manager*



# JUNIOR QUIZ COMPILED BY IAN & VAL HARRIS

Do not "Google" the answers

1. Which is the odd one out from this list: Hedwig, Scabbers, Thumper and Crookshanks
2. Can you name all the members of "The Beatles", how many there were and which ones are still alive?
3. How many stars are there on the flag of U.S.A and how many stripes?
4. Can you name the Patron saints of England, Ireland, Scotland and Wales?
5. What is the answer to this Victorian riddle-me-re: "A house full, A hole full, You cannot carry a bowl full"?
6. What is special about the number 1961?
7. Who are the "Inuit"?
8. What, recently, was called "The God Machine" and "The Doomsday Machine"?
9. Who wrote "Alice in Wonderland"?
10. Who invented frozen food?
11. In the rhyme, "Tom, Tom the piper's son, Stole a pig and away did run ...", what was the pig that Tom stole and ate?
12. What is the longest word in the dictionary?

*Answers on page 19*

## THANKS

**Thank you** to all those who came to, and enjoyed, the supper and/or play 'Return to Akenfield' by Eastern Angles. We raised the amazing sum of approximately £900.

Thank you also to all those who organised the evening, helped to make and serve the supper, served the drinks and for staffing the door and doing the raffle.

## GREAT BROMLEY FUN DAY

**If anybody in the village has a gazebo or marquee**

they would be prepared to lend the Fun Day then please can they contact Neil Skinner on 01206 231661



## Sallywags



At Great Bromley Village Hall  
Friday Mornings 9.30-11.30am  
0-5years.Parent and child group.  
Activities/themed sessions/play equipment etc.  
For more details or visits please contact 01206 230625

# The HAYWAIN - PUB OF THE YEAR

Members of the Tendring Branch of the Campaign For Real Ale (CAMRA) met in The Royal Fusilier at Aingers Green to vote for the branch's pub of the year last week.

Five pubs had been short-listed and local CAMRA members had been visiting each of them before deciding on their choice for Tendring Pub of the Year 2009.

The choice was between the New Bell in Harwich, The Haywain in Little Bromley, The Cross in Great Bromley, the White Hart in Weeley and the Apple Tree in Great



Clacton and the winner was announced as the Haywain in Little Bromley.

Branch Chairman, Jeff Luesley, says

*"With so many good pubs to choose from it was always going to be a difficult decision. There were some fine pubs that didn't even make the short list so it is a tremendous achievement by the Haywain to become our Pub of the Year 2009."*

Local CAMRA members rate each short listed pub on a number of criteria ranging from the quality and choice of the real ales through to welcome and atmosphere in the pub. In order to vote a member has to have visited all of the short listed pubs recently.

*"All of the local pubs listed in CAMRA's Good Beer Guide 2009 represent the Tendring Branch of CAMRA and I am sure that the addition of the Haywain will do us proud as our Pub of the Year,"* continued Jeff Luesley. *"The regulars will certainly have a good choice of quality real ale with which to celebrate!"*

*With thanks to the Colchester Gazette for their press release*

## CONGRATULATIONS

**The Haywain in Little Bromley**

was voted **CAMRA Pub of the Year for Tendring 2009.**

Close behind was **The Cross in Great Bromley**

representing a great achievement for both pubs from the area.

See: [www.tendringcamra.org.uk](http://www.tendringcamra.org.uk) . - Editor



# ST. GEORGE'S (C OF E) SCHOOL, GT. BROMLEY

Head teacher: Pat Fitzgerald  
Telephone: 01206 230305



## The Class and School Councils wanted to support Comic Relief

and decided that it would be a good idea to charge children for the privilege of either dressing up in pyjamas or wearing something red. I am sure you can guess which option the staff chose!!!!

The PTA have been very busy! The adults quiz evening was well attended and raised £200.74 for school funds. 65 children had a great time making bookmarks, cards and Easter boxes in a craft afternoon.

The school nurse visited the school to talk to our Year 6 pupils about the government's height and weight checks.

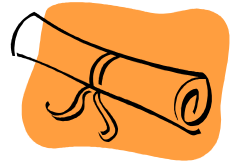
This year each class will be undertaking an enterprise activity where they are given a sum of money and have to devise ways of increasing it. Class 3 have chosen as their activity to organize an Easter Egg Hunt for the whole school. They have written letters to chocolate companies pleading for them to donate Easter eggs.

The whole school will be attending a service led by Father Robert about Holy Week in St George's Church.

We do wish you all a very happy Easter.



**Four governors** of St George's School were awarded long service certificates by the Essex Schools Governors Association at the School's termly meeting in February. Nicky Robinson, Nigel Rowe, David Skinner and Len Christodoulides had completed over 12 years on the governing body of the School. Governors of Schools are an important part of the running of any school where they contribute in every facet of school life, from curriculum to finance and from health to well being. LC



**MATERIAL** for the **MAY 2009** edition of 'The Messenger' should reach the

Editor, Leonie Henderson, by **15th April, 2009** please. Contributions from anonymous sources will not be printed. Whilst the editor welcomes contributions, photographs etc this is on the understanding that there is no obligation to publish, that the item may be edited and that there is no breach of copyright. Publication is in good faith and neither the editor nor the publisher accept any liability in respect of the content of any article, photo or advertisement, including any error or omission, responsibility for which remains with the author.

Copy can either be delivered by hand, sent by post or e-mail. (see inside back cover for details) or via the link on the websites [www.greatbromley.org.uk](http://www.greatbromley.org.uk) or

[www.littlebromley.org.uk](http://www.littlebromley.org.uk)

***Please support the sponsors of our magazine.***

## PDSA BOOKS IN THE CARPORT

Owing to the adverse weather the books at The Nook, Colchester Road, Great Bromley have been covered several times over the last couple of months. We are still doing it, and hopefully you will be able to get to them from now on. Please feel free to bring any spare books you have, look through the books on the bookshelves, take what you want to read and leave a donation in the PDSA box.

We have been doing this for nearly three years. We have to send any money to the PDSA in early November each year. The

first year, 2006, we started on 1st August and £63 was given in donations between August and November. The following year, 2006-2007, it was £233.51 and last year, 2007-2008 it was £271.86. This year to date the total is £71.68.



This amounts to a grand total of £645.05. We do thank you all for your support and hope that we can continue in the same way in the future.

John and Jacquie Terry.



### Great Bromley & Frating Playgroup

At Great Bromley Village Hall.

Monday & Wednesday 9.15-11.45am & 12.15-2.45pm

Thursday 9.30-12 noon

Session Tel No: 0785 7503103

(Lunch time session also available)

Children: 2 - 5 years. £7 per session.

Lunch time sessions also available Monday & Wednesday Cost: £1.50

Ofsted inspected.

For more details/visits, please contact Group Secretary-Jean on 01206 250694

**We are pleased to announce** that we are now offering an extra session on a Monday afternoon and that all our sessions are open to children from the age of two. On Mondays and Wednesdays we also offer a lunch club for an additional cost of £1.50p. The following session times are now available:

Monday and Wednesday 0915-11.45 & 12.15 – 2.45pm (Lunch time session also available)

Thursday 09.30 – 12 noon.

There have been some staff changes in the last few weeks and it is with sadness that we say goodbye to Sue, who due to family commitments has left the playgroup. We would like to say a huge thank you to Sue for all her hard work and effort over the past several years, I know she will be sorely missed by everyone and I'm sure you would like to join us in wishing her well.

On that note, we would like to welcome Karen Montgomery, Playgroup Supervisor, who will be joining us on the 20<sup>th</sup> April and Christina Antoniou-Garcia, Deputy Playgroup supervisor who joined us in March. We would like to wish Karen and Christina every success in their new roles. Jane Calderbank who is currently the Deputy Playgroup Supervisor has kindly offered to take on the role of Supervisor until Karen joins us in April.

The theme for next term will be nursery rhymes.

Last day of term: Thurs 2<sup>nd</sup> April 09.  
Return after Easter Break: Monday 20<sup>th</sup> April 09.

We would like to wish everyone a happy Easter.

*Jean*

## CARPET BOWLS

Results of recent matches:- We won 5-3 over Brightingsea at home, away to Weeley and Clacton Bowls both 5-3 wins, an away win of 8-0 over Silver Dawn but unfortunately roles were reversed when we lost 8-0 to Brightingsea away. Only two points down on each match result but that's bowls for you!

### CLUB SINGLES COMPETITION Linda Francis v Derek Frostick

At last we have managed to get the right people at the right time—what with league matches, illness, holidays etc—to play the heats down to a final. This was on 25th February. Linda made a good start and was able to keep just in front every end. No matter how good Derek's shots were (and there were several) Linda had an answer to them, and left Derek trailing with only 3 shots on the board. Linda gave us a splendid display of bowling to which Derek was the first to acknowledge. The final score was 12-4.

### CLUB PAIRS COMPETITION Derek Frostick & Evelyn Childs v Brian Francis & Ron Copp

This also had been running for some time and came to a conclusion on 5th March. Brian and Ron made a good start being 4-0 up after 3 ends. A slow start for Evelyn and Derek, but Evelyn found her usual form and Derek added to that with good conversion shots, bringing the score level by end No. 5. They gradually increased their score, Brian and Ron then picked up a four on one end and it was 9-8 to the mixed pair. At the end of the match (9 ends) it was a measure to decide whether it would be a draw, or a win for Evelyn and Derek, who eventually got 'the nod' and won 10-8. Ver entertaining as well as competitive.

Congratulations all round.

*Nancy Kempster*



## MOONWALK 2009

On Saturday 16<sup>th</sup> May, I am taking part in the Playtex Moonwalk. This is a 13mile walk from Hyde Park in London, starting at about 11pm, and should be completed in about 3-4 hours.

The aim (apart from giving me sore feet!) is to raise as much money as possible for breast cancer research.

I would be very grateful if you could sponsor me - I am aware however that due to the "credit crunch", you may not be able to be as generous as usual, but I would be grateful for any contribution, no matter how small,- it all adds up!

Any donations can be given on line at [www.justgiving.com/katestrowbridge](http://www.justgiving.com/katestrowbridge), in

person at Ardleigh Surgery (courier 21)

or

by post to:

Ardleigh Surgery,  
The Street,

Ardleigh,  
Colchester CO7 7TL

Many thanks

*Kate Strowbridge*



# *Forthcoming Events*

## **APRIL**

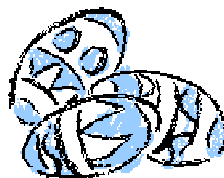
- 1 WI meeting, Village Hall, 7.30pm
- 2 Playgroup terms ends
- 4 The Easter Story, Ardleigh church, 7.00pm
- 9 Gt Bromley Council meeting, Village Hall, 7.30pm
- 11 Barnado's Easter Treasure Hunt, The Old Coal House, Ardleigh, 3.00pm
- 16 Friendship Club meeting, Village Hall, 2.00pm
- 16 Lt Bromley Parish Council meeting (Public Assembly), The Haywain, 7.30pm
- 18 Friendship Club Coffee morning
- 20 Playgroup summer term starts
- 22 Flower meeting, Gt Bromley church, 10.30am
- 24 Cappella School of Dance, Village Hall, 5.00pm
- 25 Big Rubbish Collection Day
- 28 Village Hall committee meeting, Village Hall, 7.30pm

## **MAY**

- 2 Bluebell Day, Thorrington Wood, 10.00am
- 9 Plant and Garage Sale, Ilex Farm, 10.00am
- 13 Village Hall Committee, A.G.M., Village Hall, 8.00pm

## **JUNE**

- 6/7 Festival Weekend, Little Bromley church
- 13 Great Bromley Fun Day, Village Hall/Cricket Club, 2.00pm
- Hamilton Lodge Fete



### **BLUEBELL DAY THORRINGTONHALL WOOD**



SATURDAY 2nd MAY  
10am to 4pm

Admission £2.50  
IN AID OF ST HELENA HOSPICE  
(Children to be accompanied by an adult  
Sorry, no dogs)

REFRESHMENTS IN THE CHURCH  
BY THORRINGTON WI

PLANT STALL  
CARD/CRAFT STALL

Friends of Little Bromley Church

6th/7th June  
**Festival Weekend**

*Details to Follow*



### **EASTER TREASURE HUNT**



*Believe in children*  
**Barnardo's**

Please come and join our Easter Treasure Hunt and help support these two wonderful charities as Will Pratt and his wife Denise run the London Marathon – they each aim to raise over £1,500 !!

Park opposite Ardleigh church and meet up at The Old Coal House Station Rd **Sat 11 April** for a **3pm** start. Entry costs £10 per car\* in advance, £12 on the day (tip: it will help to have all ages on your team). Return to the start by 4.30 to find our winner and enjoy tea & cake in the garden. \*Call 01206 230003 now and save!!

## PLANT AND GARAGE SALE

at  
Ilex Farm,  
Waterhouse Lane,  
Ardleigh

on  
9th May  
10.00am - 1.00pm

Donations of plants  
and anything for the  
Garage Sale (no  
books or clothes)  
gratefully received on  
Thursday 7th or  
Friday 8th.



*Proceeds to St George's Church and  
Gt Bromley & Frating Playgroup.*

## FLOWERS IN ST GEORGE'S CHURCH

There will be a meeting on  
Wednesday 22<sup>nd</sup> April  
at 10.30am  
for all ladies and gentlemen who would  
like to be involved with flowers and  
flower arranging in  
St. George's Church.

No previous knowledge and/or  
experience is necessary...  
just a love of St. George's  
and flowers. It would be  
great to have you on the  
team. For further  
information please  
contact Jenny Nicholls



St Mary's Church, Ardleigh

Saturday 4th April  
7.00pm

Lawford Open Door Theatre  
Company

Under the direction of Rev'd Canon  
Pat Prestney presents

## TELLING THE EASTER STORY

A moving, simple, mostly mime,  
dramatised version of events from  
Maundy Thursday to Easter Day.

No charge, but there will be a  
Retiring Collection

Please support this event, as the  
ODTC are performing free-of-  
charge!



**Great Bromley Parish Council  
Tendring District Council  
Veolia**

**Big Rubbish Collection Day!  
Saturday 25 April 2009**

Veolia vehicles will be making a special visit  
to Great Bromley on 25 April to receive *large*  
items of *domestic* waste such as furniture,  
fridges, TVs, cookers etc etc

Bring any item – **large or small** – (except  
tyres, paint, asbestos and gas bottles) to the  
following locations on Saturday 25 April 2009  
between the times indicated:

**The Cross Inn: 8.00 am – 9.00 am**  
**Church Meadow: 9.15 am – 10.15 am**

From **10.30 am to 11.15 am** the vehicles will  
**collect items from elderly or infirm  
residents** who are unable to get to the above  
locations. (*This must be arranged in advance  
by telephoning Great Bromley Parish Council  
on 01206 230089*)

**Please tell your family, friends and  
neighbours about this opportunity to  
dispose of large items of domestic  
rubbish!**

# GARDENING TIPS FOR APRIL



## FLOWERS

March winds and April showers and plenty of sunshine - we hope?

The bulbs we planted in the autumn are all now through and we look forward to a colourful

show of daffodils, crocus and tulips. I always leave my hyacinths in the ground, if they are not in the way of anything else they will be quite happy and come up every year, I have some that are in their fourth year.

The following annual seeds can now be planted: nasturtiums, asters, zinnia and tagetes. Pansy, sweet peas, montbretia and antirrhinums can be planted out in their flowering positions.

## SHRUBS

can be planted this month and the established shrubs can be pruned. Spraying roses against black spot should be carried out at regular intervals using one of the proprietary brands of spray. Shrubs and roses have had a very hard winter this year so a feed of fertiliser around the base will work wonders.

Gladiolis can be planted at the end of the month 4-6" deep. The pattern one uses to grow them in depends on the amount of room available, some look good in a circle. Have a supply of 3' canes handy to stop the wind from blowing them over. Another point to remember is never to plant gladioli with a dibber; a dibber will compact the soil too much and form an air pocket, always use a trowel.

## SOFT FRUIT

If you have room for a blackberry or loganberry they are very easy to grow, they can be grown at the back of the border. Two or three strands of wire

across the fence or wall, tie in the canes in a fan shape and then after fruiting cut old canes down to ground level and tie in the new growth.

Blackberries and loganberries are very easy to propagate. Simply bend on of the canes down to ground level and cover with soil about 18" from the growing tip, anchor it down with a house brick or some such weight to keep the can in contact with the soil. After approximately 6 weeks the can should have rooted, cut off from the parent below where it has rooted and plant in its permanent position.

## VEGETABLES

The following seeds can now be planted outdoor: autumn cabbage, main crop carrots, lettuce, brussel sprouts, radish, beetroot and cauliflower. Also plant spring cabbage for planting out in the autumn.

Make sure the soil is well broken down to a fine tilth, take out drills 1" deep, making sure the soil does not dry out. Tomato seed can be planted this month. Plant the seeds in gentle heat or in the kitchen on the window sill. As soon as they are big enough to handle, pot on. If you are growing in large pots a 12" pot will do.

*Frank Griffiths*

## ARE YOU NEW TO GREAT BROMLEY?



If so telephone  
Tracy Griffiths on  
01206 230054 for  
your Welcome Pack.

# PARISH COUNCIL NEWS

## Great Bromley Parish Council

[www.essexinfo.net/gbpc](http://www.essexinfo.net/gbpc)

### Report of a parish council meeting held on 12 March 2009

#### Planning

*The Council considered but had no objections to the following planning applications:*

Park Farm, Hilliards Road – agricultural reservoir (draft proposal).

**Bush Farm, Hall Road** – demolish and replace existing agricultural/domestic building(s).

**Parkland, Frating Road** – erection of single storey dwelling in garden.

*Tendring District Council has decided the following planning applications:*

**Bush Farm, Hall Road** – Erection of machinery/general storage building (agricultural determination).

Esther-Lee Stable, Crockleford Heath, Ardleigh – Change of use to traveller site (refusal).

#### Tendring Wildlife Habitat Survey

Essex Ecology Services has carried out a survey of local wildlife sites on behalf of Tendring District Council. This identified two potential new sites for designation in St George's churchyard and the land between Brook Street and Spring Hill Close. The full report can be seen at Tendring Council's Weeley offices and on their website at [www.tendringdc.gov.uk](http://www.tendringdc.gov.uk).

If you have suggestions for other possible wildlife sites then please let the clerk have details.

#### Cemetery

The parish council, which maintains the closed cemetery, has decided to replace the wooden gates which are in a poor state of repair. The parish council will

meet all or part of the cost and grant assistance is being sought.

#### Community Grants

The council has allocated grants totalling £2625 to the following local community organisations and towards the cost of the projects noted: Royal British Legion, St George's Church (churchyard maintenance), Cricket Club (mobile cricket net), Village Hall (hearing loop), Playgroup (play equipment), Tendring Citizen's Advice Bureaux, Tendring History Recorders and Hamilton Lodge.

#### Flower Tubs

The flower tubs have been ordered and should be in place during the period June – September. The cost will be met from council funds and grants by our district councillors.

#### Trees

The council's tree planting programme for 2008/9 has nearly been completed with about 2000 tree and hedges planted by village volunteers. The cost has been met jointly by the parish and district councils.



### Great Bromley Parish Council CASUAL VACANCY FOR PARISH COUNCILLOR

Following a resignation there is now a vacancy for a councillor on Great Bromley Parish Council. The necessary notices have already been posted in the village and if an election is not requested by the due date then the council will fill this vacancy by co-option. If you are interested in being considered for co-option then please confirm this in writing, by 9 April 2009, to the Clerk, Great Bromley Parish Council, 4 St George's Close Great Bromley CO7 7HZ.



## WOMEN'S INSTITUTE

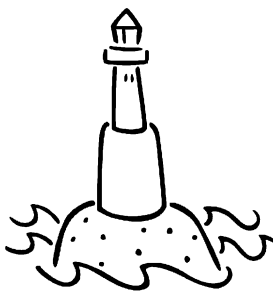
For our March meeting Paul Howard from 'Trinity House' gave a most interesting and informative talk about the many responsibilities and duties of Trinity House today. It is a Charity which goes back as far as 1514, incorporated by Henry VIII as the General Authority for England, Wales and the Channel Islands. The Duke of Edinburgh is currently 'Master of Trinity House'.

Today, things have changed in the Service, the number of lighthouses has decreased to 69 and buoys increased to 429. There are also two Differential Global Positionary Systems (DGPS), 47 Racon Radio Beacons and 8 Light Vessels to be looked after. Also, aids to navigations and all mariners development of remote telephony, helipads on the top of lighthouses. Wolf Rock was the first light to have solar power. Most famous is the Eddystone Lighthouse (off Plymouth) which caught fire in the 17th century, where the Keeper was 91 years old.

There is a levy (light dues) for ships visiting UK and Irish ports with rates set by the Government based on the tonnage of vessels, fishermen pay an annual fee. Tours can be arranged to visit the buoys. The modern light bulbs that Trinity House uses are about the size of the end of a thumb but can be seen from several miles away.

Our next meeting is on Wednesday 1st April and the speaker will be John Harris from Blenheim Nurseries, his subject being 'Hanging Baskets'. All visitors are welcome in the village hall at 7.30pm.

*June Willgress*



## FROM THE PAST

### **Burgesses of Colchester**

The Oath Book of Colchester shows that people from Great and Little Bromley had business in the borough.

In 1385 John Glaunvyle of Great Bromley was admitted a burgess.

In 1389 Thomas Legham of Little Bromley was also admitted to the same honour.

In 1914 Geoffrey Munte, who was born in Great Bromley, took the oath of allegiance and was followed in 1530 by another relative John Munte of Bromley and John Stone of Little Bromley the next year.

*John Appleby*



# GREAT BROMLEY VILLAGE HALL CHARITY TRUSTEES

REGISTERED CHARITY NUMBER 301310

The Village Hall committee met on 10th March with 12 members present. The meeting was chaired by Martin Frostick in the absence of the Chairman, Fred Nicholls.

The Village Hall committee will next meet at the hall on Tuesday, 28th April at 7.30pm.

You are invited to attend the Village Hall Annual General Meeting being held on Wednesday 13th May commencing at 8.00pm at the hall. Any person who would like to stand for election to the committee should obtain, complete and submit a nomination form to the Secretary before the meeting starts. Forms may be had from the Secretary.

We hope you enjoyed the committee run Big Band Dance at the Hall on 21st March. Thank you for your support and we hope to see you again at another event. Our thanks also to Beryl Hurst for organising the evening in aid of Village Hall funds.

On Saturday 13th June, we have the Great

Bromley Community Event 2009 (Fun Day), lead by Neil Skinner and his committee, taking place at and around the Village Hall in conjunction with the Hamilton Lodge Fete.

The Cabaret evening has now been booked for Saturday 21st November (**not** October); more details in the coming months.

The Cappella School of Dance will be holding a dance class at the hall on Friday evenings from 5-6.00pm starting on 24th April.



We would like to hear from anybody who will be willing to examine and certify our accounts each year, usually in April, with effect from 2010. If you are interested and can help, please contact us so that we may discuss it with you.

*Bevan Willgress*

## FRIENDSHIP CLUB

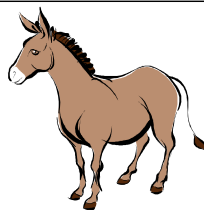
**We had two young ladies explaining taxes and benefits** at our last meeting and very informative leaflets were given out, so don't hesitate to apply if you think you are entitled.

The outing was discussed and names taken (unfortunately we can only take 34 people) which means it is now 'closed' for the time being. If you missed this one, never fear, there could be another before the end of the year!

Various shapes and sizes of money

boxes were on display for the competition.

The Competition for April is 'a picture of a donkey'.



### REMINDERS FOR YOUR DIARY:

Coffee morning - 18th April  
Fun Day - 13th June

*Vicky Griffiths*

## KITCHEN CORNER



This month, some ideas for 10 minute snacks or quick supper dishes!

### Baked eggs

Heat oven to 180c Grease individual oven proof dishes or tins. Line each with thin slices of cheese, drop an egg into each and sprinkle with toasted breadcrumbs and some grated parmesan (optional).

Bake till eggs are set – about 10 minutes usually but keep checking.

Serve with toast or crackers.

### Welsh Rarebit

per portion use:

3tbs grated cheese

½ oz butter

1 tbs milk or ale

A little Worcester sauce

Small quantity mustard to taste.

### Omelettes

for each serving use:

2 eggs lightly beaten with

2 teasps water and

some salt and pepper.

Melt a knob of butter in the pan and when smoking hot but not brown, tip in the eggs and stir slightly. When beginning to set, push the edge away from the side of the pan to let the uncooked egg run on to the base. Add any filling to one half of the omelette, flip the other half over and slide onto a warm plate to serve.

**Filling:** mushrooms cooked in a little

butter

Ham chopped small and warmed in butter

Asparagus tips, cooked

Other cooked meat or fish or vegs.

*Jill Frostick*

## GREAT BROMLEY BELLRINGERS

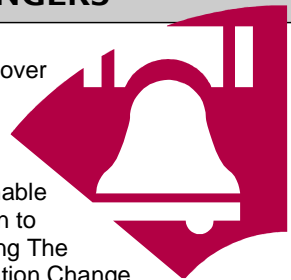
You may have heard St George's church bells being rung during the morning of Saturday 14th March when a full peal was successfully attempted and completed by ringers with several years' experience in the art.

They rang 5040 changes of Minor in 7 methods which took 2 hours 53 minutes. Those taking part were Adrian Malton (Conductor) Treble, Adrian Semken 2, Michael Mills 3, Stephen Nash 4, Philip Erith 5, Colin Chapman Tenor. Adrian Semken and Philip Erith rang at Great Bromley early in their ringing careers and Philip still does, Adrian is now at Coggeshall. Both these ringers have now rung each of the six bells at Gret Bromley to a full peal (as well as numerous

quarter peals) over a 50-year period.

The peal was arranged to enable Adrian Semken to celebrate joining The Essex Association Change Ringers 50 years ago to the day at a meeting at Great Bromley. However, it was also to celebrate the life of Bernard Fairhead, a ringer and churchwarden at St Leonard-at-the-Hythe, Colchester who sadly unexpectedly passed away two days earlier.

*Bevan Willgress*



# PARISH COUNCIL NEWS

## Little Bromley Parish Council

The next meeting of Little Bromley Parish Council will be held on 16th April (Public Assembly) in The Haywain in Little Bromley at 7.30pm.

## ESSEX POLICE



These are incidents in Great Bromley for the month of February:-

**Suspicious Circumstances** - Chase Road

*Les Barnes PCSO 71909*

*Thorpe Le Soken NPT Eastern*

*Internal Ext : 487603*

*External 01255 862843*

*Email : [leslie.barnes@essex.pnn.police](mailto:leslie.barnes@essex.pnn.police)*

*website : [www.essex.police.uk](http://www.essex.police.uk)*

### **Bogus BT Callers**

Dear Co-ordinators and Members,

Please be aware that bogus phone calls are being received from people claiming to be representatives from BT. The

representative will offer a deal that if anything should go wrong with your phone line that they will get an engineer out asap. These people are demanding bank details. Please **DO NOT** give any details out over the telephone. The number that they claim they are calling from is 0207 043 0643 this number is not a valid BT number.

*Paul Teague*

*Essex Watch Administrator (Tending)*

*0300 333 4444 ext 16360*

*Mobile 07814 672449*

*Clacton on Sea Police Station*

*8 Beatrice Road*

*Clacton on Sea, CO15 1ET*

### **Answers to the Junior Quiz on page 7**

1. Thumper is a rabbit in the film Bambi; the others are animals in Harry Potter.
2. There were four, Paul McCartney and Ringo Starr are still alive and John Lennon and George Harrison are the members who have died.
3. 50, one for each state and the 13 stripes representing the original states or colonies
4. St George for England, St Patrick for Ireland, St Andrew for Scotland and St David for Wales.
5. The answer is "Smoke".
6. It reads the same when it is upside-down
7. This is the name of the peoples who inhabit the northern Alaska, the Canadian arctic and Greenland. The word means "The people" in the Inuit language
8. The Large Hadron Collider (LHC) which is a huge experiment machine situated in Cern in Switzerland. It was switched on in September 2008.
9. Charles Dodgson, who used the name Lewis Carroll. He wrote two books called *Alice's Adventures in Wonderland* and the sequel, *Through the Looking Glass*, and *What Alice Found There*.
10. Mr Clarence Birdseye, he discovered that freezing food very quickly kept it fresh and still tasting good
11. The pig was a sweet in the shape of that animal which was sold on street corners by the "pig pye man".
12. "Smiles", there is a mile between the first and the last letter



# THE RECTORY, GREAT BROMLEY

Dear Friends

At last we are all looking forward to Easter and Lent is drawing to a close. We all love the Easter festival, the time of rejoicing and celebration. It is a time for new hope, new life and the Day of Resurrection is the greatest day of the Christian year. The children in Junior Church will be given their eggs. They will have prepared the Easter garden. The church will be beautifully decorated and those lovely Easter hymns and alleluias will be sung triumphantly.

Most of us are familiar with Easter Day and traditionally the number of communicants will be quite a bit higher than on a normal Sunday. Those of us who remember the rubrics of the Book of Common Prayer will remember these words "And not, that every Parishioner shall communicate at the least three times in the year, of which Easter to be one".

The week that precedes Easter Day is the most important week of the Christian year and sadly many forget the importance of this week as they make their final preparation for Easter which began on Ash Wednesday. This is the week in which we commemorate and enact the suffering (Passion) and death of Jesus in our services of worship. I think that these services are the most meaningful and symbolic of all our services, and those faithful worshippers who attend them I am sure will agree. I am presently writing about these services to encourage those of you who have not managed to attend them in the past to think again because they are so spiritually significant. These services are very ancient in their origin and it is through these liturgies that the Christian church has prepared for Easter through most of its existence. The conclusion of Holy Week is called the Easter Triduum (a Triduum is a space of three days usually accompanying a

church festival or holy days that are devoted to special prayer and observance).

The Easter Triduum therefore begins on Thursday evening of Holy Week with the Mass of the Last Supper and concludes on the evening of Easter Day.

These special services of Holy Week call us to move behind the joyful celebrations of Palm Sunday and Easter, and focus on the suffering, humiliation, and death that is part of Holy Week. It is important to place the hope of the Resurrection, the promise of newness of life, against the background of death end endings. It is only through walking through the shadows and darkness of Holy Week and Good Friday, only in realising the horror and magnitude of sin and its consequences in the world incarnated in the dying Jesus on the cross, only in contemplating the ending and despair that the disciples felt on Holy Saturday, that we can truly understand the light and hope of Sunday morning.

It is in observing this truth that new beginnings come from endings, and many people are able to draw a parable of their own lives and faith journey from their observances of Holy Week. We are provided with them opportunity to experience this truth in liturgy and symbol, and the services themselves become a powerful proclamation of the transformative power of the Gospel, and God at work in the lives of people.

So what happens at these services? The Eucharist is celebrated on Maundy Thursday. It begins as a joyful celebration to commemorate Our Lord's institution of the Sacrament on the night in which he was betrayed. During the service the feet of 12 members of the congregation are washed by the priest thus re-enacting the way in which Our Lord washed the feet of his disciples. When the Eucharist is over

the entire altar is stripped and all the hangings and crosses are taken out of the church. There is only one altar that is dressed and that is the altar in the Lady Chapel which is the altar of repose. The Blessed Sacrament is carried out in procession and put on the altar of repose, which is beautifully decorated with flowers to remind us of the garden. We are then invited to stay there to pray as Jesus invited his disciples to pray in the garden. Some people stay for a little while after the service to pray. Others go home and then come back for a while later in the evening because the Vigil lasts until midnight.

On Good Friday the Liturgy is celebrated at 2pm. This was Our Lord's last hour on the cross. The Eucharist is not celebrated on Good Friday because it is such a sad and solemn day, but we do receive Holy Communion from the Sacrament which was consecrated on Maundy Thursday. One of the most moving parts of this service is the bringing of the cross into the church as we sing the hymn, "When I survey the wondrous cross".

After Good Friday comes Holy Saturday. It is traditionally a day of quiet meditation as Christians contemplate the darkness of a world without a future and without hope apart from God and his grace. It is also a time to remember family and the faithful who have died as we await the Resurrection. As the day draws to a close we then begin to prepare for the joy of Easter. The Paschal candle is brought into church. On Good Friday when the cross is brought in, the priest says "Behold the wood of the cross whereon lay hung the Saviour of the world". On Easter Eve the priest sings "The light of Christ" and the congregation responds "thanks be to God". The Paschal candle

is then placed in its stand. The church lights are all put on and the great hymn of thanks and praise called the "Exultet" (which translates "rejoice heavenly power" is sung by the priest. Of all the things I have to sing during the year, the Exultet is probably the most complicated but it is very beautiful.

I do hope that as a member of the congregations of St Mary's and St George's you will all make a special effort this year to prepare for Easter in the way that pilgrims have done for almost 2000 years by sharing in the Lord's death and crucifixion so that we may have a deeper joy as we celebrate the Resurrection at Easter.

With every blessing and a very Happy Easter to you all,

*Fr Robert*

# ST. GEORGE THE MARTYR, GREAT BROMLEY

*united with St. Mary the Virgin, Ardleigh*



## Services for April

### HOLY WEEK 2009

<b>Sunday 5th</b>	8.00am	<b>Palm Sunday</b> Eucharist	<i>St. George the Martyr</i>
	10.30am	Procession of Palms <i>followed by Parish Eucharist with reading of the Passion</i>	<i>St. Mary the Virgin</i>
<b>Thursday 9th</b>	7.30pm	<b>Maundy Thursday</b> Eucharist of the Last Supper <i>Watch until Midnight</i>	<i>St. Mary the Virgin</i>
	<b>Friday 10th</b>	11.00am	<b>Good Friday</b> Stations of the Cross from <i>this is an Ecumenical Act of Worship!</i>
2.00pm		The Passion of the Lord	<i>St. George the Martyr</i>
<b>Saturday 11th</b>	7.30pm	<b>Easter Eve</b> The Easter Vigil with light of the New Fire & Paschal Candle	<i>St. Mary the Virgin</i>
	<b>Sunday 12th</b>	8.00am	<b>Easter Day</b> Eucharist
10.30am		Parish Eucharist	<i>St. George the Martyr</i>
6.30pm		Evensong	<i>St. Mary the Virgin</i>
<b>Sunday 19th</b>	8.00am	<b>Easter 2</b> Eucharist	<i>St. George the Martyr</i>
	10.30am	Parish Eucharist	<i>St. Mary the Virgin</i>
	11.45am	Annual Parochial Church meeting	<i>St. Mary the Virgin</i>
	6.30pm	Choral Evensong	<i>St. George the Martyr</i>
<b>Thursday 23rd</b>	7.30pm	<b>St. George's Day</b> Patronal Eucharist	<i>St. George the Martyr</i>
	<b>Sunday 26th</b>	8.00am	<b>Easter 3</b> Eucharist
10.30am		Parish Eucharist	<i>St. George the Martyr</i>
6.30pm		Evensong	<i>St. Mary the Virgin</i>

**Holy Communion** every Friday at 11.00am at Seven Rivers, Hall Road, Great Bromley.



## EASTER LILIES

If you would like to sponsor Easter Lilies in memory of a loved one, please send your contributions to Jenny Nicholls at Fryerning, Hall Road, Great Bromley, CO7 7TS. Ph: 230688

Many thanks.